

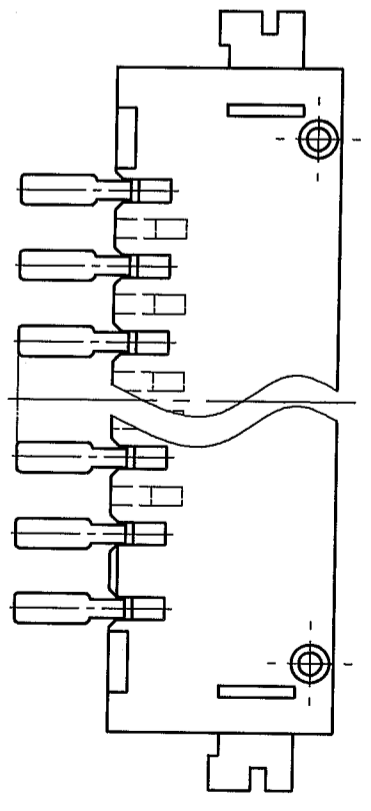
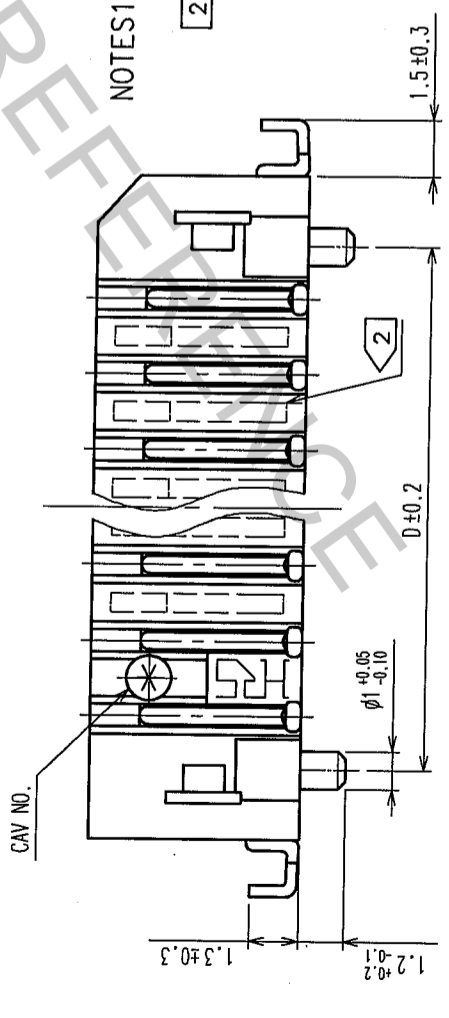
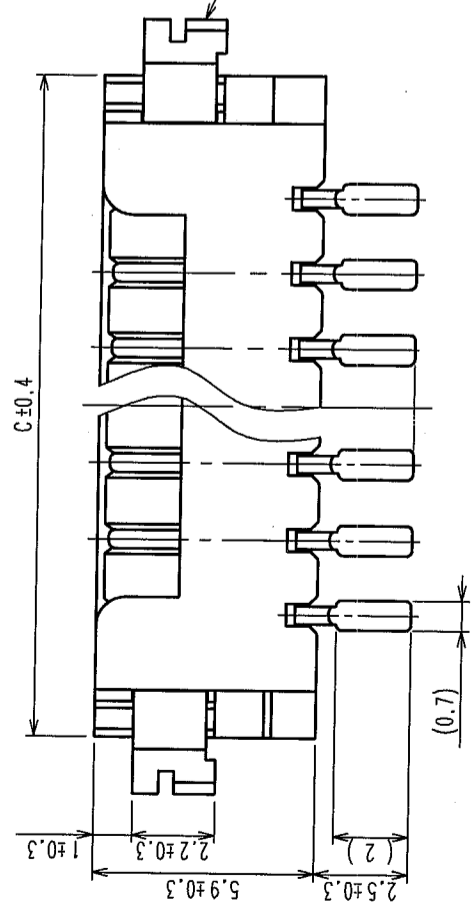
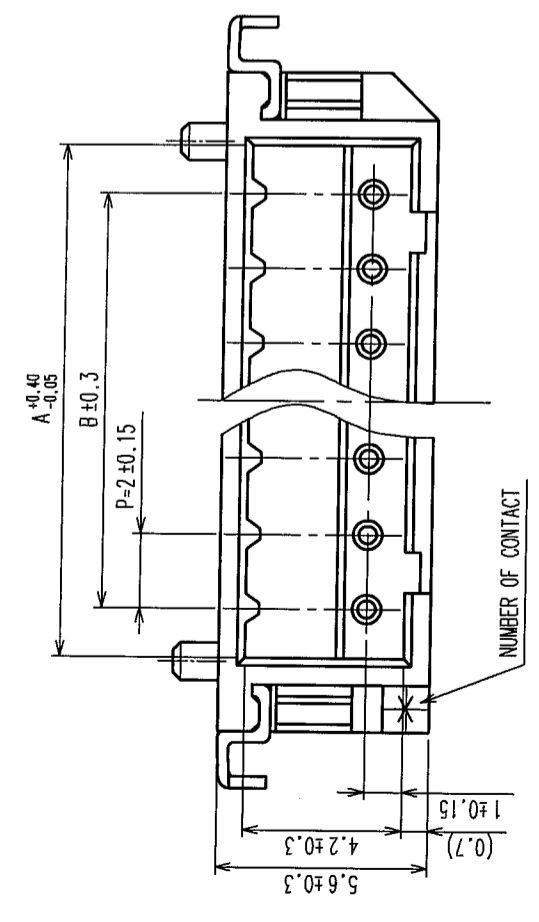
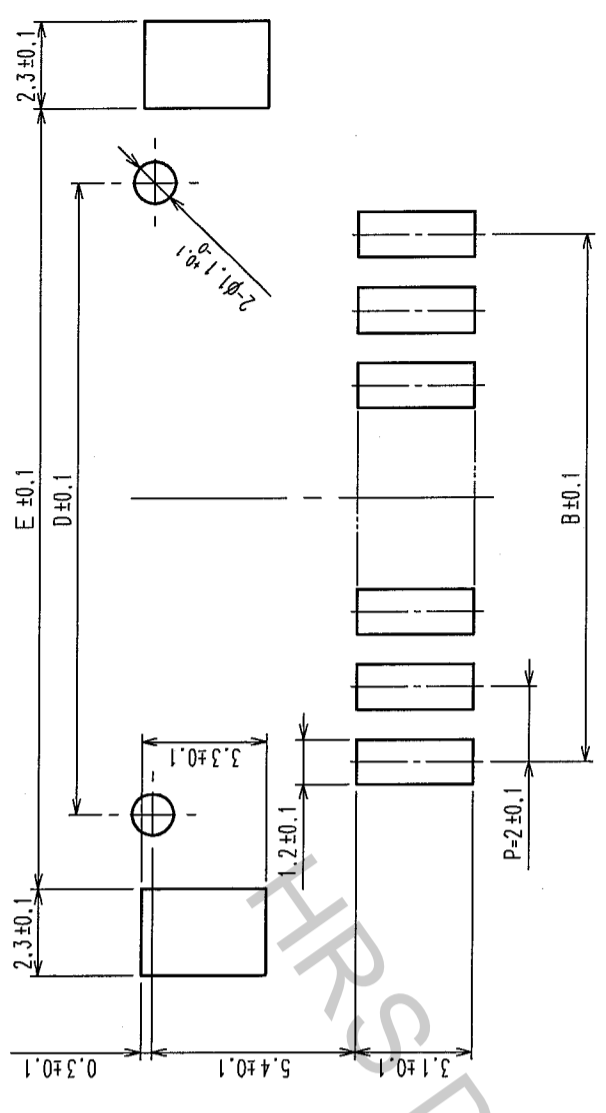
COUNT	DESCRIPTION OF REVISIONS	BY	CHKD	DATE	COUNT	DESCRIPTION OF REVISIONS	BY	CHKD	DATE
2	RE-H-06617	I.D	T.M	04.11.27					

MATED CONNECTORS

DF3-*S-2R*(F=7.7)
DF3-*S-2C(F=8.4)

DF3Z-*P-2H(20)

RECOMMENDED PATTERN



PART NO.	CODE NO.	A	B	C	D	E
DF3Z-2P-2H(20)	543-1042-5-20	4.6	2.0	8.5	4.8	8.74
DF3Z-3P-2H(20)	543-1043-8-20	6.6	4.0	10.5	6.8	10.74
DF3Z-4P-2H(20)	543-1044-0-20	8.6	6.0	12.5	8.8	12.74
DF3Z-5P-2H(20)	543-1045-3-20	10.6	8.0	14.5	10.8	14.74
DF3Z-6P-2H(20)	543-1046-6-20	12.6	10.0	16.5	12.8	16.74
DF3Z-7P-2H(20)	543-1047-9-20	14.6	12.0	18.5	14.8	18.74
DF3Z-8P-2H(20)	543-1048-1-20	16.6	14.0	20.5	16.8	20.74
DF3Z-9P-2H(20)	543-1049-4-20	18.6	16.0	22.5	18.8	22.74
DF3Z-10P-2H(20)	543-1050-3-20	20.6	18.0	24.5	20.8	24.74
DF3Z-11P-2H(20)	543-1051-6-20	22.6	20.0	26.5	22.8	26.74
DF3Z-12P-2H(20)	543-1052-9-20	24.6	22.0	28.5	24.8	28.74
DF3Z-13P-2H(20)	543-1053-1-20	26.6	24.0	30.5	26.8	30.74
DF3Z-14P-2H(20)	543-1054-4-20	28.6	26.0	32.5	28.8	32.74
DF3Z-15P-2H(20)	543-1055-7-20	30.6	28.0	34.5	30.8	34.74

NOTES1. LEAD CO-PLANARITY INCLUDE REINFORCED METAL FITTINGS SHALL BE 0.1mm MAX.
2. WHEN THE NUMBER OF CONTACT IS 2 TO 10, THIS PART IS FREE FROM SINKAGE INDICATING DOTTED LINES.
WHEN THE NUMBER OF CONTACT IS 11 TO 15, THERE ARE SINKAGES INDICATING DOTTED LINES.

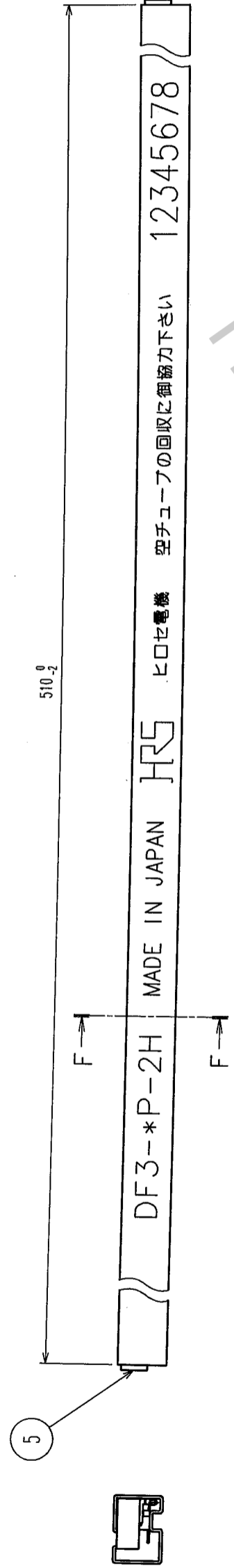
NO.	MATERIAL	FINISH, REMARKS	CL	NO.	MATERIAL	FINISH, REMARKS
2	BRASS	SURFACE:TIN PLATED 1μ m min (UNDER PLATING)COPPER PLATED 0.5μ m min		5	S.PVC	STOPPER, GRAY
1	POLYAMIDE	BEIGE (NATURAL), UL94-0		4	RIGID POLYVINYLCHLORIDE	ELECTROSTATIC PROTECTION, CLEAR
				3	BRASS	SURFACE:TIN PLATED 1μ m min (UNDER PLATING)NICKEL PLATED 1μ m min

NO.	DESIGNED	CHECKED	APPROVED	RELEASED
DF3Z-*P-2H(20)	M. Nakamoto	H. Umehara	T. Miyazaki	T. Omo
	'04.03.25	'04.03.25	'04.03.25	'04.03.25

DRAWING NO.	PART NO.
EDC3-305940-10	DF3Z-*P-2H(20)

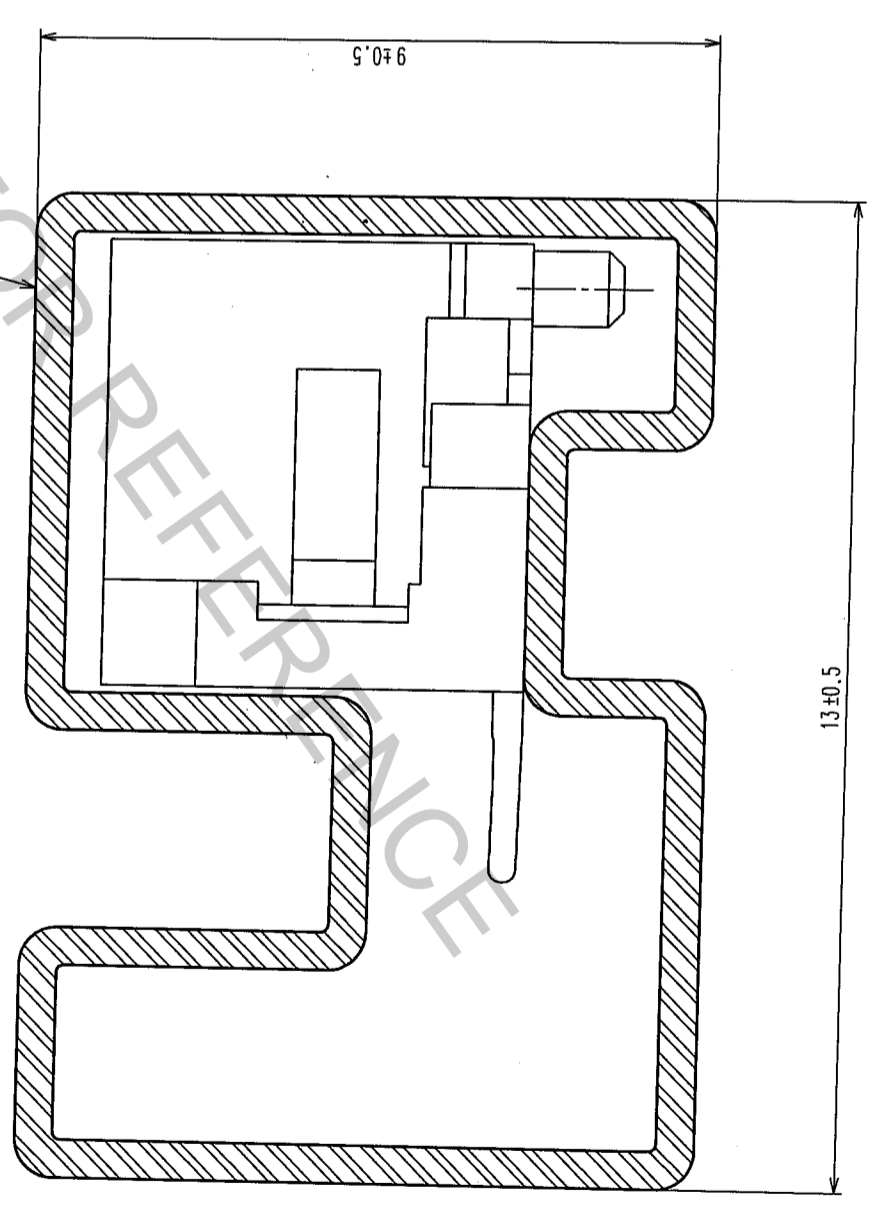
SCALE	UNITS
5 : 1	mm

COUNT	DESCRIPTION OF REVISIONS	BY	CHKD	DATE	COUNT	DESCRIPTION OF REVISIONS	BY	CHKD	DATE
△					△				
△					△				
△					△				



F-F (10:1)

CODE NO.	PART NO.	NUMBER OF CONNECTORS
543-1042-5-20	DF3Z-2P-2H(20)	41
543-1043-8-20	DF3Z-3P-2H(20)	34
543-1044-0-20	DF3Z-4P-2H(20)	30
543-1045-3-20	DF3Z-5P-2H(20)	26
543-1046-6-20	DF3Z-6P-2H(20)	23
543-1047-9-20	DF3Z-7P-2H(20)	21
543-1048-1-20	DF3Z-8P-2H(20)	19
543-1049-4-20	DF3Z-9P-2H(20)	18
543-1050-3-20	DF3Z-10P-2H(20)	17
543-1051-6-20	DF3Z-11P-2H(20)	15
543-1052-9-20	DF3Z-12P-2H(20)	14
543-1053-1-20	DF3Z-13P-2H(20)	14
543-1054-4-20	DF3Z-14P-2H(20)	13
543-1055-7-20	DF3Z-15P-2H(20)	12



NO.	MATERIAL	FINISH, REMARKS	NO.	MATERIAL	FINISH, REMARKS
CL					

DRAWING NO.	EDC3-305940-10	PART NO.	DF3Z-*P-2V(20)
SCALE	FR:EE	DESIGNED	H. Umehara
UNITS	mm	DRAWN	M. Nakamoto
		CHECKED	T. Miyazaki
		APPROVED	T. Ota
		RELEASED	