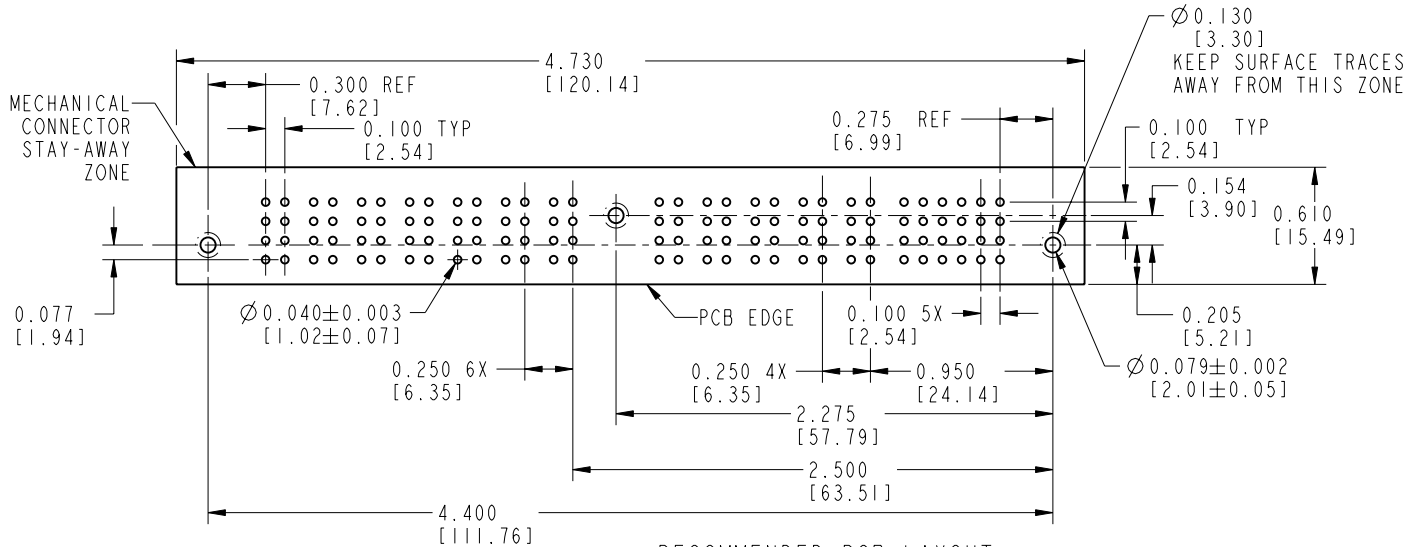
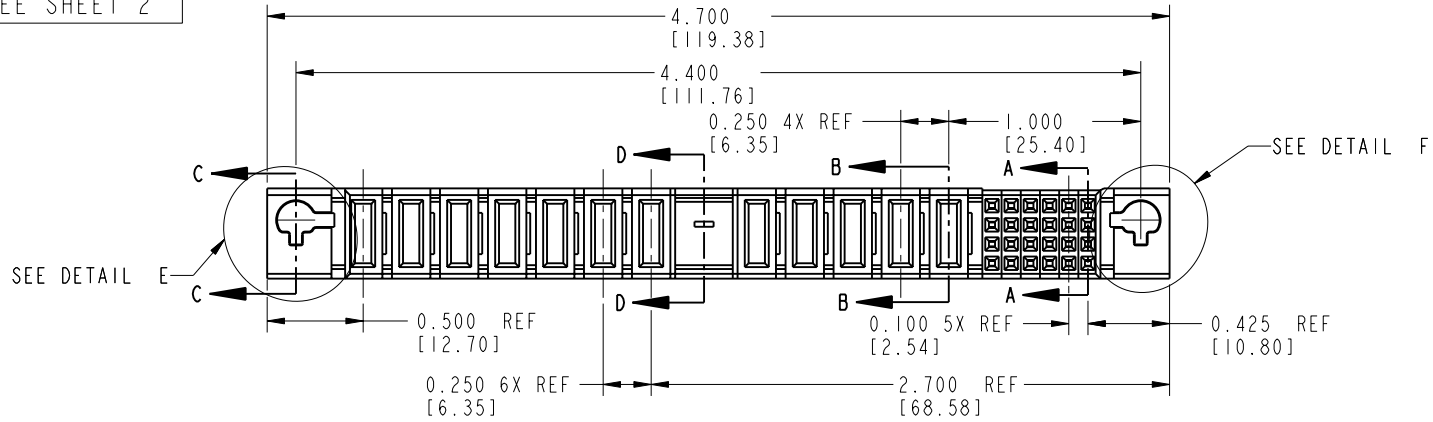


Tous droits strictement réservés. Reproduction ou communication o des liers interalle sous quelque forme que ce soit sans autorisation écrite du propriétaire. Propriete de c FCI. Droits de reproduction FCI.

All rights strictly reserved. Reproduction or issue to third parties in any form, whatever is not permitted without written authority from the proprietor. Property of FCI. Copyright FCI.

PRODUCT NUMBER
51261-XXYYY
SEE SHEET 2



RECOMMENDED PCB LAYOUT

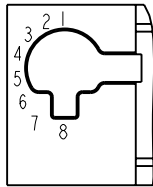
mat'l code		NOTE 2		tolerances unless otherwise specified		CUSTOMER COPY		 www.fciconnect.com	
ltr	ecn no.	dr	date	linear	.XX ±.01/.X ±.3	projection		title	
H	DG05-0375	GuoJM	10/06/05	angles	.XXX ±.005/.XX ±.13			24S + 5P + 1M + 7P VERTICAL SOLDER TAIL RECEPTACLE	
				dr	.XXXX ±.0020/.XXX ±.051			product family	
				enqr	0° ± 2°			PWRBLADE	
				chr	LEV-4			code	
				appd	02-04-98			213	
					J. BROWN			size	
					02-04-98			dwg no	
					J. BROWN			A	
					02-04-98			51261	
sheet index	revision sheet	H	H	H		scale		SHEET	
		1	2	3		1:1		1 OF 3	

Tous droits strictement réservés. Reproduction ou communication o des liers interalle sous quelque forme que ce soit sans autorisation écrite du propriétaire. Propriete de c FCI. Droits de reproduction FCI.

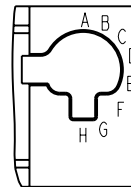
FCI

All rights strictly reserved. Reproduction or issue to third parties in any form, whenever is not permitted without written authority from the proprietor. Property of FCI. Copyright FCI.

PRODUCT No.	ROWS	POWER														SIGNAL						
		E2	P12	P11	P10	P9	P8	P7	P6		P5	P4	P3	P2	P1	6	5	4	3	2	1	E1
51261-XX001... NOTE: 3	D C B A		PA	PA	PA	PA	PA	PA	PA		PA	PA	PA	PA	PA	E	E	E	E	E	E	
51261-XX003... NOTE: 3	D C B A		PA	PA	PA	PA	PA	PA	PA		PA	PA	PA	PA	PA	E	E	E	E	E	E	



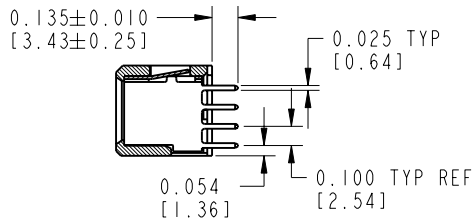
DETAIL E
SCALE 2:1



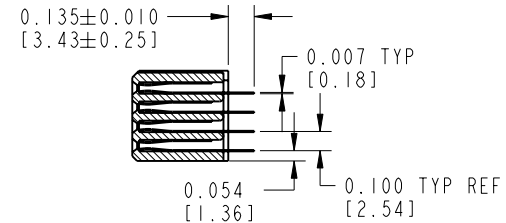
DETAIL F
SCALE 2:1



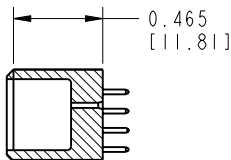
SECTION C-C



SECTION B-B



SECTION A-A



SECTION D-D

NOTE 2				tolerances unless otherwise specified		CUSTOMER		FCI	
mat'l code	lfr	ecn no.	dr	date	.XX ±.01/.X ±.3	COPY	www.fciconnect.com		
	H				linear .XXX ±.005/.XX ±.13	projection	title 24S + 5P + 1M + 7P		
					angles .XXXX ±.0020/.XXX ±.051		VERTICAL SOLDERTAIL RECEPTACLE		
					dr LEV-4 02-04-98	IN/MM	product family PWRBLADE	code	213
					engr J. BROWN 02-04-98	scale 1:1	size	dwg no	SHEET 2
					chr J. BROWN 02-04-98		A	51261	
					appd J. BROWN 02-04-98				
sheet index	revision sheet								

Tous droits strictement réservés. Reproduction ou communication o des liers interalle sous quelque forme que ce soit sans autorisation écrite du propriétaire. Propriete de c FCI. Droits de reproduction FCI.



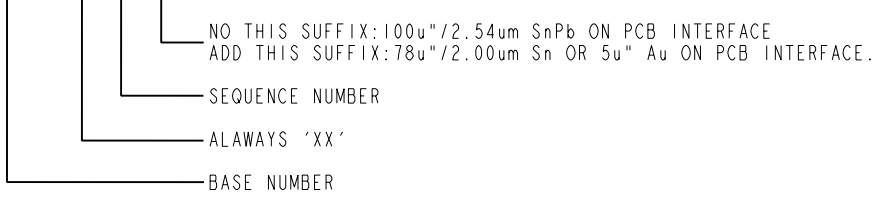
All rights strictly reserved. Reproduction or issue to third parties in any form, whenever is not permitted without written authority from the proprietor. Property of FCI. Copyright FCI.

PRODUCT NUMBER
51261-XXYYY
SEE SHEET 2

NOTES:

1. PRODUCT NUMBERING CODE:

51261 - XX YYY LF



2. HOUSING MATERIAL: GLASS FILLED HIGH TEMP. THERMOPLASTIC
UL94 V-0

SIGNAL CONTACT MATERIAL: COPPER ALLOY
POWER CONTACT MATERIAL: COPPER ALLOY

3. PLATING:

51261-XXYYY Singal Pin:30u"/0.76um Au OVER 50u"/1.27um Ni ON THE CONTACT AREA,
AND 100u"/2.54um SnPb PLATING OVER 50u"/1.27um Ni ON THE TERMINATION SECTION.
Power Pin:30u"/0.76um Au OVER 50u"/1.27um Ni ON THE CONTACT AREA,
AND 100u"/2.54um SnPb PLATING OVER 50u"/1.27um Ni ON THE TERMINATION SECTION.

51261-XXYYYLF Singal Pin:30u"/0.76um Au OVER 50u"/1.27um Ni ON THE CONTACT AREA,
AND 78u"/2.00um Sn PLATING OVER 50u"/1.27um Ni ON THE TERMINATION SECTION.
Power Pin:30u"/0.76um Au OVER 50u"/1.27um Ni ON THE CONTACT AREA,
AND 78u"/2.00um Sn PLATING OVER 50u"/1.27um Ni ON THE TERMINATION SECTION.

PART NUMBER 51261-XXYYYLF MEETS EUROPEAN UNION DIRECTIVE AND OTHER COUNTRY REGULATIONS AS DESCRIBED IN GS-22-008.

THE HOUSING WILL WITHSTAND EXPOSURE TO 260° PEAK TEMPERATURE FOR 10 SECONDS IN A WAVE SOLDER APPLICATION WITH A CIRCUIT BOARD.

- 4. ALFA KEYING POSITION: IS CONFIGURED WITH POSITION "A" (SEE DETAIL "F")
- 5. NUMERIC KEYING POSITION: IS CONFIGURED WITH POSITION "1" (SEE DETAIL "E")
- 6. PRODUCT SPECIFICATION GS-12-149
- 7. "COMPANY" NAME, P/N, AND LOT CODE TO APPEAR ON THIS SURFACE PER BUS-24-017.

PCB NOTES:

- 8. ALL DIMENSIONS ARE BASIC UNLESS OTHERWISE SPECIFIED
- 9. ALL THROUGH HOLES ARE LOCATED WITHIN A TRUE POSITION OF 0.004[0.10]
- 10. ALL DIAMETERS ARE FINISHED HOLE SIZE.
- 11. Ø.079 THROUGH HOLES ARE UNPLATED.
- 12. Ø0.0453±0.0010 [1.151±0.025] DRILLED HOLES PLATED WITH 0.0003 [0.008] MIN SnPb OVER 0.001 [0.03] TO 0.003 [0.08] Cu PLATING TO ACHIEVE A Ø0.040±0.003 [1.02±0.07] HOLE.

CODE	CONTACT TYPE
PA	POWER
E	SIGNAL
X	OMITTED

mat'l code		NOTE 2		tolerances unless otherwise specified		CUSTOMER		www.fciconnect.com	
lfr	ecn no.	dr	date	linear	XX ±.01/.X ±.3	COPY		title	
H					XXX ±.005/.XX ±.13	projection		24S + 5P + 1M + 7P	
				angles	XXX ±.0020/.XXX ±.051			VERTICAL SOLDER TAIL RECEPTACLE	
				dr	0° ± 2°			product family	
				engr	LEV-4 02-04-98	1 N / MM		PWRBLADE	
				chr	J. BROWN 02-04-98	scale		code	
				appd	J. BROWN 02-04-98	1:1		213	
sheet index	revision sheet							size	
								dwg no	
								51261	
								SHEET 3	