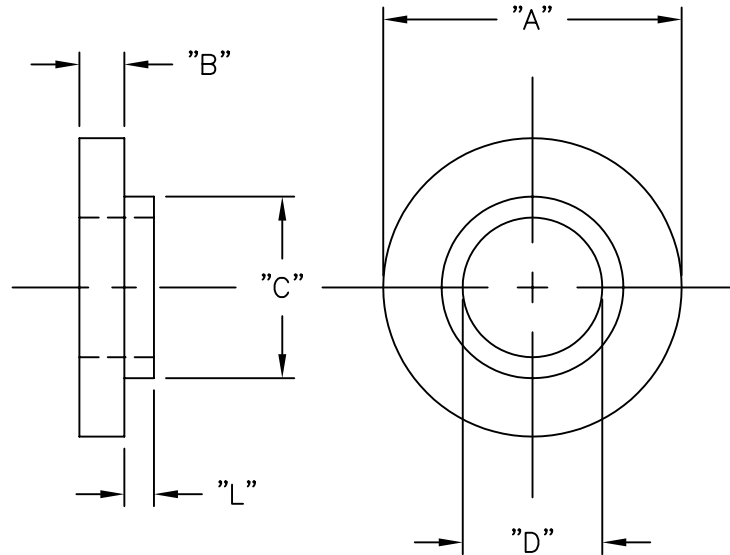


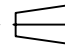

PART NO.	SCREW SIZE	APP. METRIC EQUIVALENT	"L" ±.010 (±0.3)	"A" ±.010 (±0.3)	"B" ±.010 (±0.3)	"C" ±.005 (±0.1)	"D" ±.005 (±0.1)
MNI-HT #4-2	#4	M3	.031 (0.8)	.280 (7.1)	.047 (1.2)	.145 (3.7)	.118 (3.0)
MNI-HT #4-8			.125 (3.2)				
MNI-HT #4-12			.185 (4.7)				
MNI-HT-#4-220 *			.032 (0.8)	.215 (5.5)	.040 (1.0)	.135 (3.4)	.116 (2.9)
MNI-HT-#6-2	#6	M3.5	.031 (0.8)	.312 (7.9)	.047 (1.2)	.190 (4.8)	.146 (3.7)
MNI-HT-#10-6	#10	M4.5	.093 (2.4)	.399 (10.1)	.063 (1.6)	.260 (6.6)	.200 (5.1)

\* DESIGN ALLOWS INSERTION IN THE TAB OF A TO-220 TRANSISTOR



NOTES:

1. MATERIAL: 40% GLASS FILLED.  
POLYPHENYLENE SULFIDE, (RMS-50) UL94 V-0.
2. COLOR: BLACK.

TITLE: MOLDED NYLON INSULATOR, HIGH TEMPERATURE			DWG IN IN (MM) 		FINAL 	
TOLERANCES UNLESS NOTED .XX=±.010 .XXX=±.005 FRAC=±1/64 ANG=±1'			FILE # MNI-HT	DWN: J.B.	APP:	PART # SEE TABLE
B   UPDATED TABLE AND ADDED "SULFIDE" TO NOTES   SM 02.25.02			MAT'L: SEE NOTES	DT: 01-17-96	DT:	
A   CHANGED FILE NO. AND TITLE BLOCK   SM 12.04.01			RE: RICHCO, INC.	RICHCO INC. PO BOX 804238, CHICAGO, 60680 (773) 539-4060		
REV   DESCRIPTION   ENGR DATE						