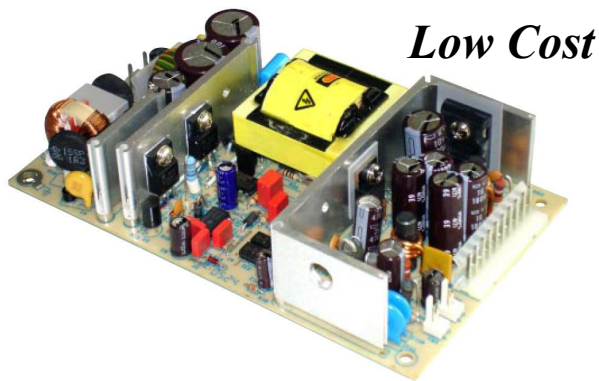


DY110 SERIES

110 Watts For Medical & Industrial Applications

160 Watts Peak Current



DESCRIPTION

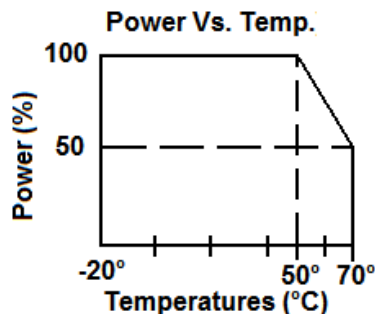
DY110 series is a universal input multiple output power supply. The series is a 110 Watt power supply in the size of 3.5" x 6" with a wattage density of 3.8W/in³. The efficiency can reach up to 78-87% depending on model.

FEATURES

- EMI FCC Class B
- No Minimum Load Required
- Single and Multiple Output
- Universal input 90VAC to 264VAC
- Low Leakage Current

APPLICATIONS

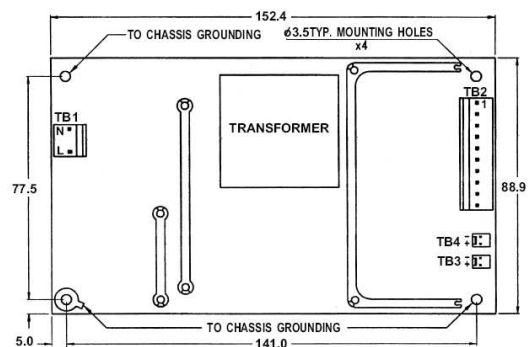
- Computer Peripherals
- Telecommunications
- Tape Drives
- Test Instrumentation Product
- Data Acquisition
- Medical & Dental



GENERAL SPECIFICATIONS

Input Voltage.....	90VAC to 264VAC
Input Frequency.....	47Hz to 63Hz
Inrush Current (cold).....	Less than 30A at 115VAC, 25°C
Operating Temperature.....	0 to 70°C de-rated 2.5%/°C >50°C
Storage Temperature.....	-40°C to 85°C
Cooling.....	Free Air Convection
Efficiency.....	78% to 87%
	At rated load and 115Vac
Holdup Time.....	>16ms at 115VAC
Overvoltage Type.....	Latch Off
Overload Protection.....	Auto recovery
Short Circuit Protection.....	Auto recovery
Earth Leakage.....	<300µA
Designed in full compliance with	UL 60950-1, UL60601-1 CSA 22.2 #60950-1,601.1 EN60950-1,EN60601-1
EMI	EN55022 "B", EN55011 "B" FCC docket class "B"
EMS.....	EN61000-4-2,-3,-4,-5,-6,-8,-11
Harmonics.....	EN61000-3-2 Class A

MECHANICAL SPECIFICATIONS



Connector:	TB1—AC input	: Molex 5277-02A or Equivalent
	TB2—DC output	: Molex 5277-10A for Single to Triple Outputs, Molex 5277-12A for Quad Outputs,
	TB3—LED	: Molex 5045-02A or equivalent
	TB4—FAN	: Molex 5045-02A or equivalent

Size: 88.95mm X 152.4mm X 36.1mm, 3.5" X 6" X 1.42"
 Mounting Holes: 77.5mm X 141, 3.05" X 5.55"

OUTPUT SPECIFICATIONS

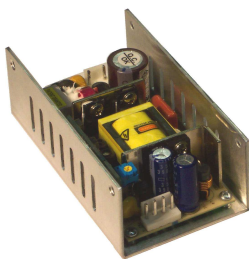
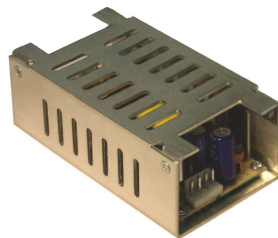
Model	Watts	Voltage (Vdc)	Load (A)				Voltage Tolerance ±	Ripple & Noise Pk to Pk	Regulation	
			Min.	Rate	Max	Peak			Line	Load
DY110-2	110	+5V	0	7	13	20	±1%	1%	±1%	±3%
		+12V	0	5	7	11	±5%	1%	±1%	±3%
		-12V	0	0.5		-	±5%	1%	±1%	±5%
DY110-19	110	+3.3V	0	10	12	12	±3%	50m vp-p	±1%	±3%
		+5V	0	8	10	10	±5%	1%	±1%	±3%
		+12V	0	2		-	±5%	1%	±1%	±5%
		-12V	0	0.2		-	±5%	1%	±1%	±5%
DY110-6	110	+5V	6	19		-	±1%	1%	±1%	±1%
DY110-7	110	+12V	0	8.5		13	±1%	1%	±1%	±1%
		+5V	0	1		-	±5%	1%	±1%	±1%
DY110-7-1	110	+12V	0	9		13	±1%	1%	±1%	±1%
DY110-8	110	+15V	0	7		10.5	±1%	1%	±1%	±1%
		+5V	0	1		1	±5%	1%	±1%	±1%
DY110-8-1	110	+15V	0	7		10.5	±1%	1%	±1%	±1%
DY110-9	110	+24V	0	4.5		6.5	±1%	1%	±1%	±1%
		+5V	0	1		1	±5%	1%	±1%	±1%
DY110-9-1	110	+24V	0.1	4.5		6.5	±1%	1%	±1%	±1%
DY110-14	110	+48V	0	2.3		3.5	±1%	1%	±1%	±1%
DY110-1	110	+5V	0	6	13	20	±2%	1%	±1%	±3%
		+12V	0	5	7	11	±5%	1%	±1%	±3%
		-12V	0	0.5		-	±5%	1%	±1%	±5%
		-5V	0	0.5		-	±5%	1%	±1%	±3%
DY110-11	110	+5V	0	6	10	15	±2%	1%	±1%	±3%
		+24V	0	2	3	5.5	±5%	1%	±1%	±3%
		+12V	0	2		-	±5%	1%	±1%	±5%
		-12V	0	0.3		-	±5%	1%	±1%	±5%

Note: Contact factory for Safety Agency Approved status.

- Each output can provide up to peak load temporarily. Continuous operation at greater than rated load is not allowed.
- At factory, in 60% rated load condition, each output is checked to be within voltage accuracy.
- Line regulation is defined by changing ±10% of input voltage from nominal line at rated load.
- Load regulation is defined by changing ±40% of measured output load from 60% rated load.
- The ripple and noise is measured by using 15MHz bandwidth limited oscilloscope. Each output is terminated with a 0.47 μF capacitor at rated load and nominal line.
- Hold up time is measured from the end of the last charging pulse to the time when the main output drops down to 95% output voltage at rated load and nominal line.
- Efficiency is measured at rated load.

DY110 SERIES 110 WATT — PIN ASSIGNMENTS

Pin	1	2	3	4	5	6	7	8	9	10	11	12
Model												
DY110-1	+5V	+5V	+5V	GND	GND	GND	+12V	+12V	-12V	GND	-5V	NC
DY110-2	+5V	+5V	+5V	GND	GND	GND	+12V	+12V	-12V	NC		
DY110-6	+5V	+5V	+5V	+5V	GND	GND	GND	GND	NC	NC		
DY110-7	+12V	+12V	+12V	+12V	GND	GND	GND	GND	+5V	NC		
DY110-7-1	+12V	+12V	+12V	+12V	GND	GND	GND	GND	NC	NC		
DY110-8	+15V	+15V	+15V	+15V	GND	GND	GND	GND	+5V	NC		
DY110-8-1	+15V	+15V	+15V	+15V	GND	GND	GND	GND	NC	NC		
DY110-9	+24V	+24V	+24V	+24V	GND	GND	GND	GND	+5V	NC		
DY110-9-1	+24V	+24V	+24V	+24V	GND	GND	GND	GND	NC	NC		
DY110-14	+48V	+48V	+48V	+48V	GND	GND	GND	GND	NC	NC		
DY110-11	+5V	+5V	+5V	GND	GND	GND	+24V	+24V	+12V	GND	-12V	NC
DY110-19	+3.3V	+3.3V	+3.3V	GND	GND	GND	GND	GND	+5V	+5V	+12V	-12V

ENCLOSURES (optional)
EUS

ECS


Our Standard power supplies, the DY090 Series, can be installed into a fully enclosed chassis or in a 'U' shape chassis as an option. These options offer two mounting planes. The fully enclosed option helps to reduce radiated noise.

Example Part Number:
 DY090-9ECS or DY090-9EUS

*Note DY040 pictured in chassis