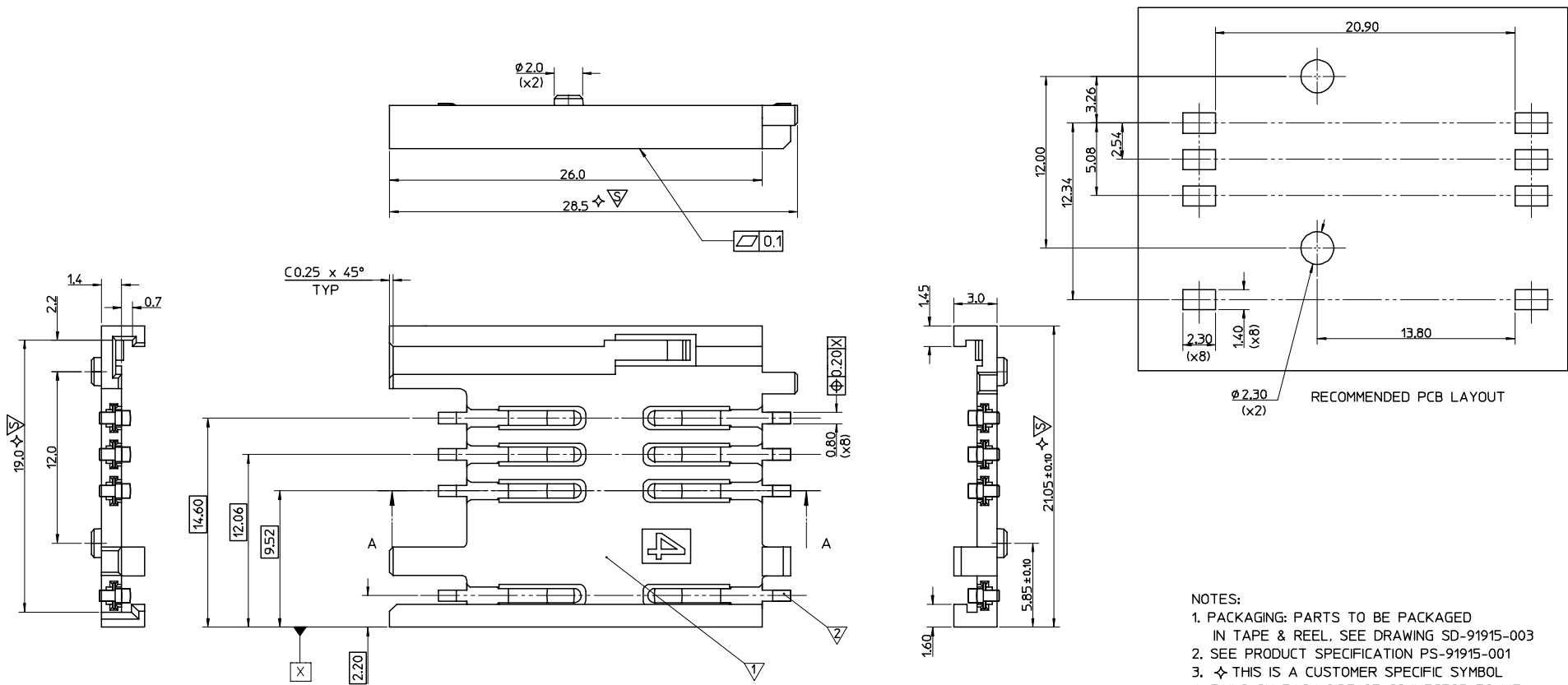
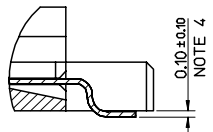


13 12 11 10 9 8 7 6 5 4 3 2 1

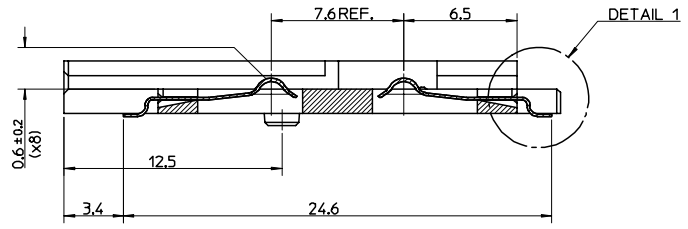


- NOTES:
1. PACKAGING: PARTS TO BE PACKAGED IN TAPE & REEL. SEE DRAWING SD-91915-003
 2. SEE PRODUCT SPECIFICATION PS-91915-001
 3. ⚡ THIS IS A CUSTOMER SPECIFIC SYMBOL
 4. TAILS ON EACH SIDE OF CONNECTOR TO LIE WITHIN 0.12mm OF EACH OTHER.

ITEM	COMPONENT	QTY	MATERIAL
▽	HOUSING	1	LCP E130i, UL94 V-0, COLOUR BLACK RoHS & LEAD FREE COMPLIANT
▽	TERMINAL	8	0.15 PHOSPHOR BRONZE Au FLASH OVER Pd/Ni Sn ON SMT TAILS



COPLANARITY DETAIL 1



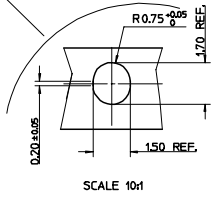
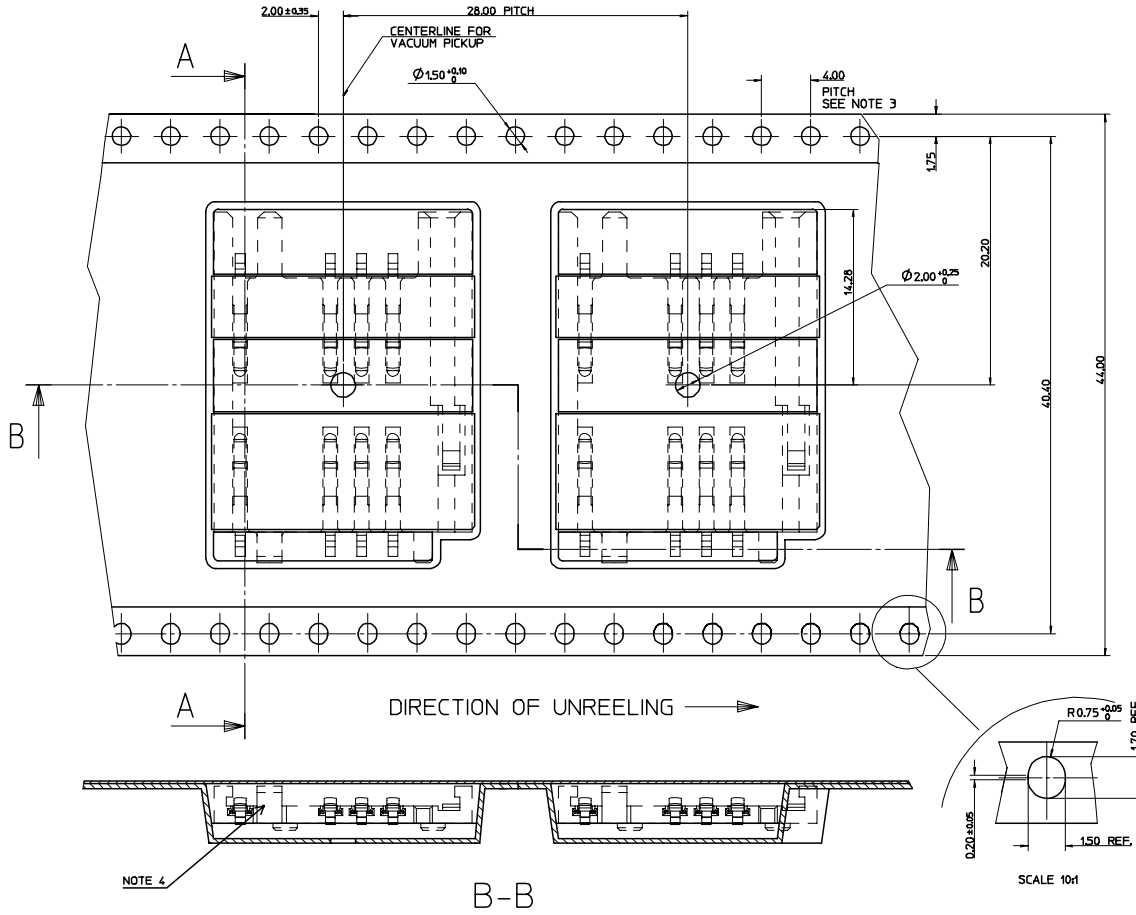
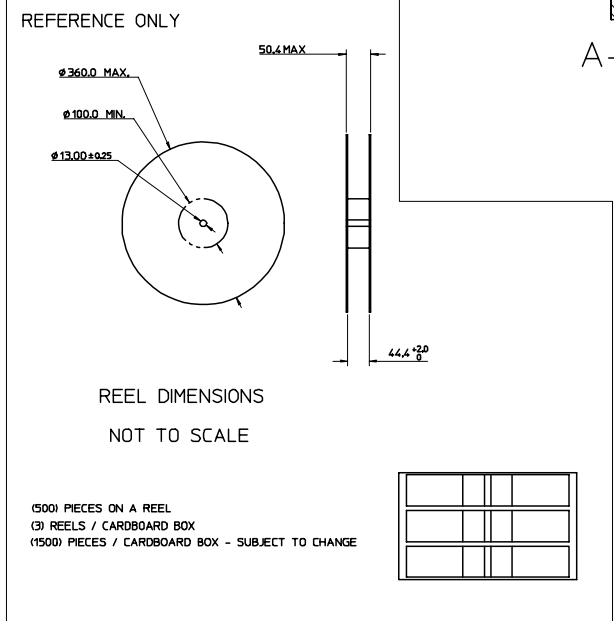
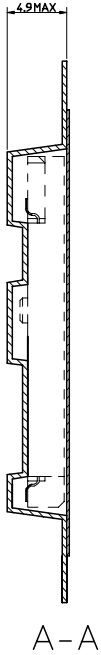
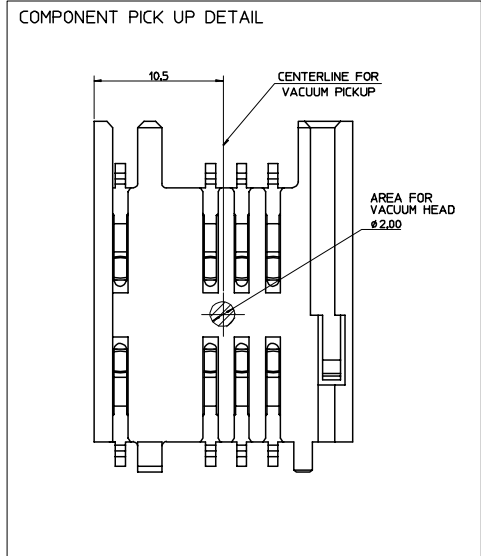
A - A

ORIGINAL RELEASE EC NO: E2006-1110 DRAWN: CARTON 2007/02/14 CHKD: 2007/02/15 APPR: EFOLAN 2007/02/23	DESCRIPTION
REV A	

QUALITY SYMBOLS	GENERAL TOLERANCES (UNLESS SPECIFIED)
▽=0	4 PLACES ± --- ± ---
▽=0	3 PLACES ± --- ± ---
	2 PLACES ± 0.05 ± ---
	1 PLACE ± 0.10 ± ---
	ANGULAR ± 2 °
▽=3	DRAFT WHERE APPLICABLE MUST REMAIN WITHIN DIMENSIONS

DIMENSION STYLE		SCALE	DESIGN UNITS	THIRD ANGLE PROJECTION
MM ONLY		1:1	METRIC	
DRAWN BY	DATE	TITLE		
DMAHER	2006/11/28	2.54 PITCH SIM CONNECTOR		
CHECKED BY	DATE	MOLEX INCORPORATED		
FUGGAN	2006/11/28	MATERIAL NO. 91915 0001		
APPROVED BY	DATE	DOCUMENT NO. SD-91915-001		
EFOLAN	2006/11/28	SHEET NO. 1 OF 1		

12 11 10 9 8 7 6 5 4 3 2 1



- NOTES:
- MATERIAL:
CARRIER TAPE: VOLUME CONDUCTIVE POLYSTYRENE, 0.40 REF THICK, BLACK
COVER TAPE: COLD SEAL POLYESTER, 0.06 REF THICK, TRANSPARENT
 - PEEL FORCE OF THE COVER TAPE IS 0.1N TO 1.0N
AT MAXIMUM PEEL SPEED OF 300mm/min. ±10%
 - PITCH TOLERANCE OVER ANY 10 PITCHES ±0.2
 - TAPE & REEL PACKAGING FOR PART NUMBERS 919150001 & 919150002.

TO CUSTOMER ASSEMBLY MACHINE →

ORIGINAL RELEASE EC No: E2006-110 DRAWN/CARTON 2007/02/14 CHKD: APPR:	QUALITY SYMBOLS ▼ - 0 ▽ - 0	GENERAL TOLERANCES (UNLESS SPECIFIED)		SCALE 4:1	DESIGN UNITS METRIC	THIRD ANGLE PROJECTION REVISE ON CAD ONLY	TITLE BLISTER PACKAGING SIM CONNECTOR	
		mm	INCH	DIMENSION STYLE MM ONLY				
		4 PLACES ± --- ± ---	3 PLACES ± --- ± ---	DRAWN BY DMAHER	DATE 2006/11/28			
		2 PLACES ± 0.10 ± ---	1 PLACE ± 0.2 ± ---	CHECKED BY FDUGGAN	DATE 2006/11/28			
ANGULAR ± 2 °		DRAFT WHERE APPLICABLE MUST REMAIN WITHIN DIMENSIONS		APPROVED BY EFOLAN	DATE 2006/11/28	MATERIAL NO. NOTE 4	DOCUMENT NO. SD-91915-003	SHEET NO. 1 OF 1

THIS DRAWING CONTAINS INFORMATION THAT IS PROPRIETARY TO MOLEX INCORPORATED AND SHOULD NOT BE USED WITHOUT WRITTEN PERMISSION