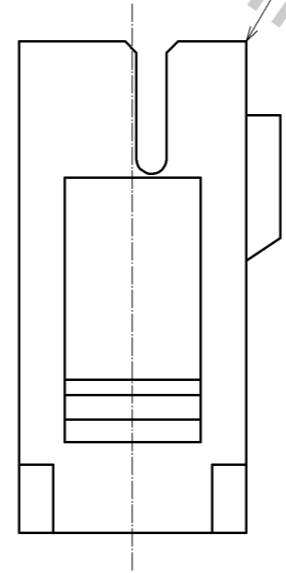
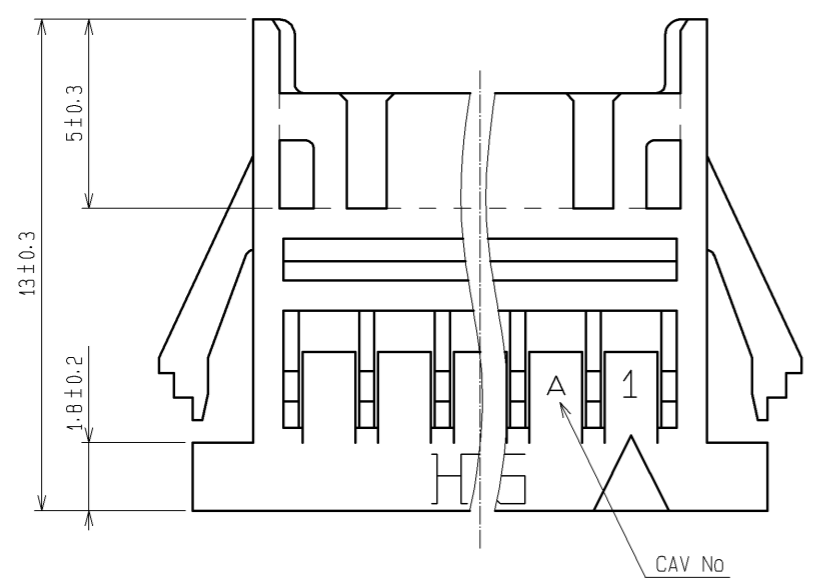
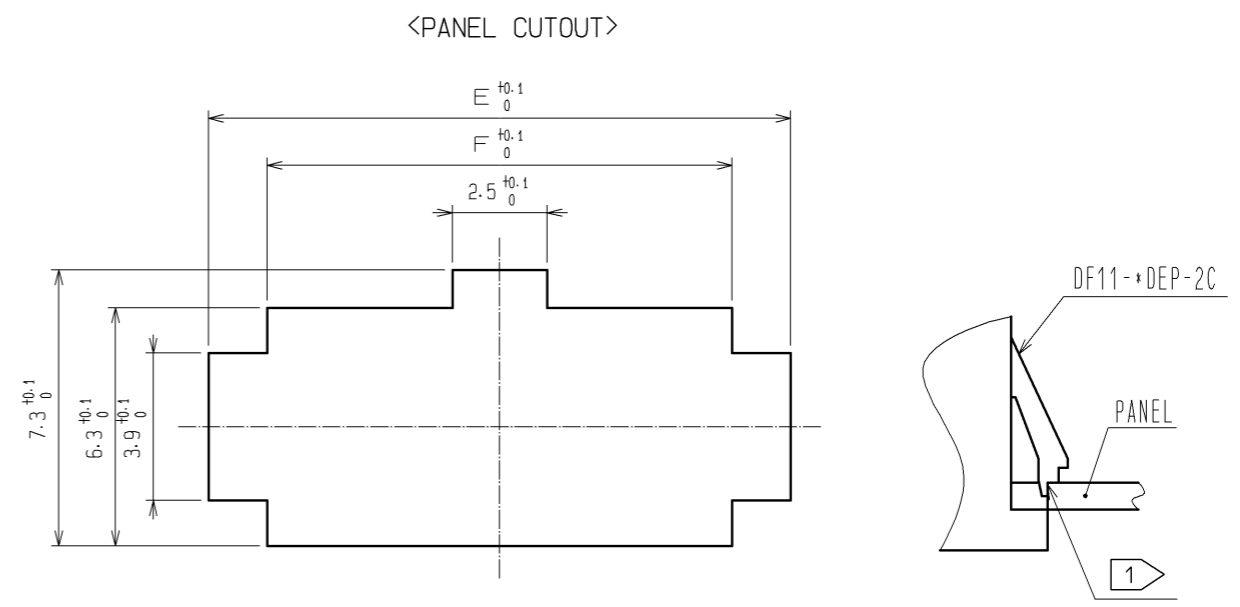
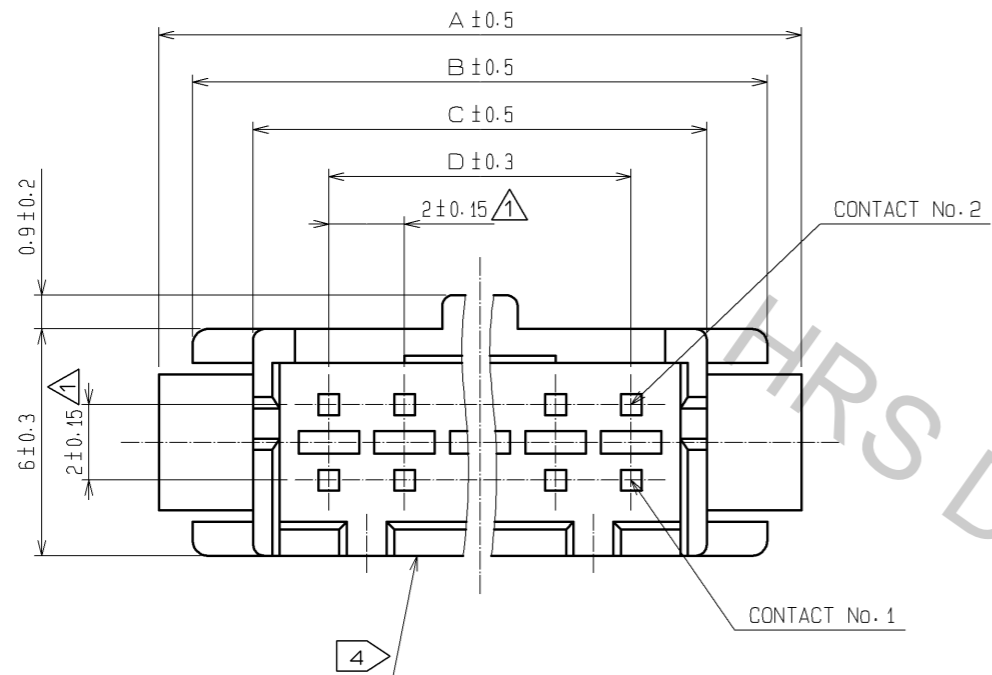
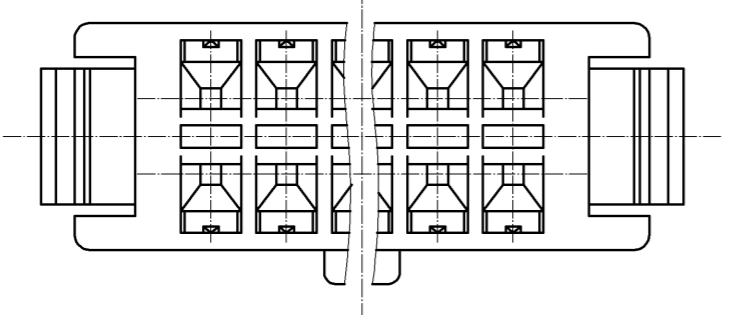


May.1.2017 Copyright 2017 HIROSE ELECTRIC CO., LTD. All Rights Reserved.



NUMBER OF CONTACT	HRS No.	A	B	C	D	E	F
4	CL543-0619-5	11.0	9.2	6.0	2.0	9.4	6.3
6	CL543-0620-4	13.0	11.2	8.0	4.0	11.4	8.3
8	CL543-0621-7	15.0	13.2	10.0	6.0	13.4	10.3
10	CL543-0622-0	17.0	15.2	12.0	8.0	15.4	12.3
12	CL543-0623-2	19.0	17.2	14.0	10.0	17.4	14.3
14	CL543-0624-5	21.0	19.2	16.0	12.0	19.4	16.3
16	CL543-0625-8	23.0	21.2	18.0	14.0	21.4	18.3
18	CL543-0626-0	25.0	23.2	20.0	16.0	23.4	20.3
20	CL543-0627-3	27.0	25.2	22.0	18.0	25.4	22.3
22	CL543-0628-6	29.0	27.2	24.0	20.0	27.4	24.3
24	CL543-0629-9	31.0	29.2	26.0	22.0	29.4	26.3
26	CL543-0630-8	33.0	31.2	28.0	24.0	31.4	28.3
28	CL543-0631-0	35.0	33.2	30.0	26.0	33.4	30.3
30	CL543-0632-3	37.0	35.2	32.0	28.0	35.4	32.3
32	CL543-0633-6	39.0	37.2	34.0	30.0	37.4	34.3

- NOTE 1) PLEASE USE THE NON-RADIUS SIDE FOR THE PANEL HOOKING AREA.  
 2) APPLICABLE PANEL THICKNESS IS 1.6 TO 1.0mm.  
 (A SLIGHT DEVIATION WILL OCCUR FOR THE THICKNESS EXCEPT FOR 1.6 AND 1.2mm.)  
 3) LENGTH OF MATING WITH 'DF11-+DC-2C' IS 15.3mm.  
 4) THE WALL IN CENTER DOESN'T EXIST FOR 4 AND 6 CONTACTS.



NO.	MATERIAL	FINISH	REMARKS	NO.	MATERIAL	FINISH	REMARKS
				1	PORYAMIDE		UL94V-0(BLACK)
UNITS	mm	SCALE	5 : 1	COUNT	3	DESCRIPTION OF REVISIONS	DIS-H-004178
APPROVED : KJ. KATAYOSE 05.01.05				DESIGNED : YK. NAKATSU			
CHECKED : TY. OMA 05.01.05				CHECKED : TS. FUKUSHIMA			
DESIGNED : IO. DENPOUYA 05.01.05				DATE : 09.09.14			
DRAWN : IO. DENPOUYA 05.01.05				DRAWING NO. : EDC3-081880-01			
HRS HIROSE ELECTRIC CO., LTD.				PART NO. : DF11-+DEP-2C			
				CODE NO. : CL543-			