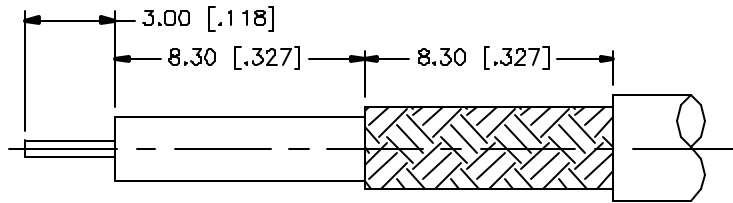
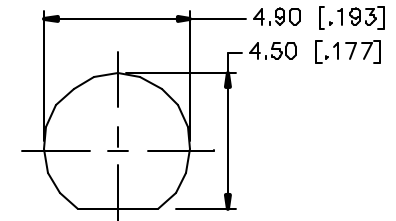


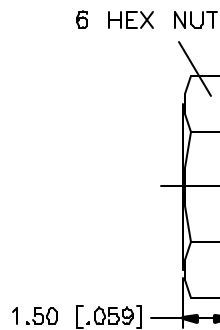
REV.	DATE	DESCRIPTION
A	04/03/05	UPDATE DRAWING FORMAT



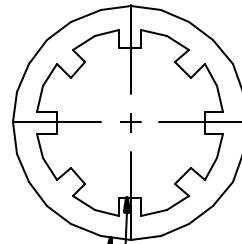
RECOMMENDED
CABLE STRIPPING DIM'S



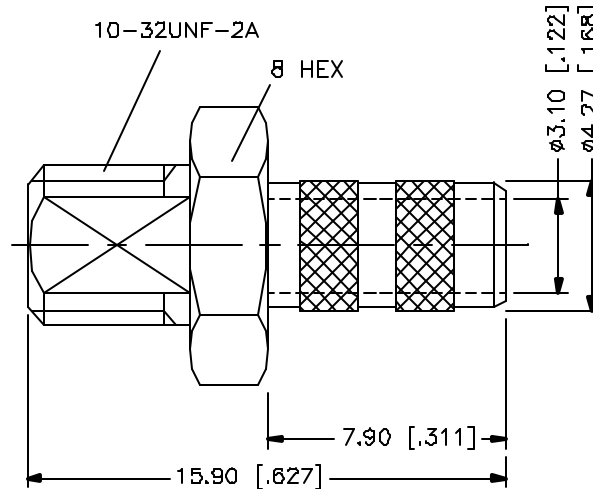
RECOMMENDED
MOUNTING HOLE



6 HEX NUT



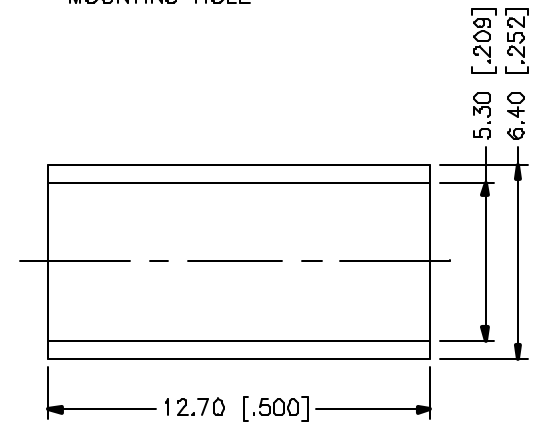
$\phi 7.80$ [$\phi .307$]
 $\phi 5.00$ [$\phi .197$]



10-32UNF-2A

6 HEX

$\phi 3.10$ [.122]
 $\phi 4.27$ [.168]



CRIMP NOTES:

1. CRIMPED FERRULE
HEX CRIMP SIZE .213"

REV.	DESCRIPTION	MATERIAL	FINISH	QTY	UNLESS OTHERWISE SPECIFIED DIMENSIONS ARE IN MILLIMETERS. DIMENSIONS IN [] ARE IN INCHES AND FOR CUSTOMER REFERENCE ONLY.	APPROVALS	DATE	Amphenol Connex			
8					UNLESS OTHERWISE SPECIFIED DIMENSIONS ARE IN MILLIMETERS. DIMENSIONS IN [] ARE IN INCHES AND FOR CUSTOMER REFERENCE ONLY. TOLERANCES FOR MILLIMETERS ARE: 0.5 - 8mm ± 0.20mm 8 - 30mm ± 0.40mm 30 - 120mm ± 0.50mm UNLESS OTHERWISE SPECIFIED TOLERANCES FOR INCHES ARE: .020 - .315 = ± 0.007" .315 - 1.180 = ± 0.015" 1.180 - 4.724 = ± 0.020"			BULKHEAD CABLE TERMINATION (FOR RG-58C/U, 58/U CABLE)			
7											
6								DRAWN G.R.S. 04/03/05 CHECKED ISSUED SHEET 1 OF 1 CAD FILE C:/142/214-2271.DWG			
5											
4	FERRULE	COPPER	NICKEL	1							
3	HEX NUT	BRASS	NICKEL	1							
2	LOCK WASHER	BRASS	NICKEL	1							
1	BODY	BRASS	NICKEL	1							
	DESCRIPTION	MATERIAL	FINISH	QTY	DO NOT SCALE DRAWING						