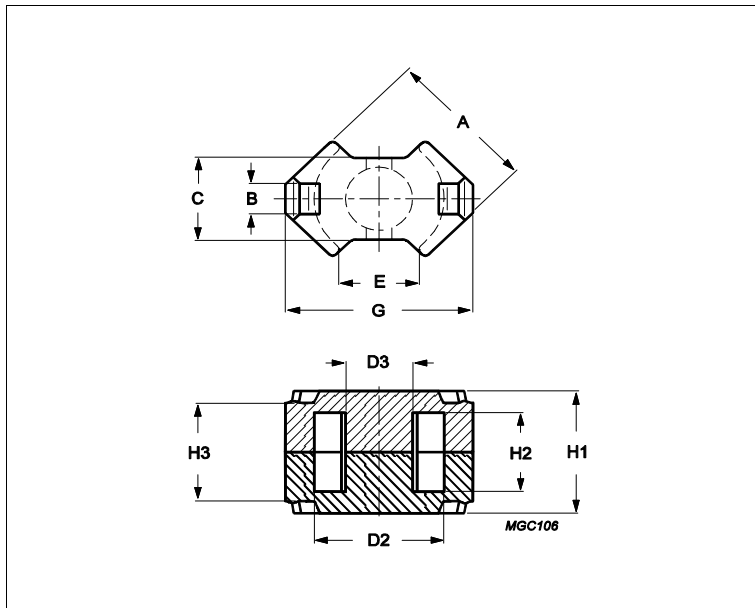


## Core **RM8/ILP**



Effective parameters			
	Parameter	Value	Unit
$\Sigma(I/A)$	core factor (C1)	0.44	mm <sup>-1</sup>
<b>Ve</b>	effective volume	1860	mm <sup>3</sup>
<b>Le</b>	effective length	28.7	mm
<b>Ae</b>	effective area	64.9	mm <sup>2</sup>
<b>Amin</b>	minimum area	55.4	mm <sup>2</sup>
<b>m</b>	RM8/ILP	≈ 10	g/set

Dimensions for product: RM8/ILP

	Nom	Tol +	Tol -	Max	Min	Unit
<b>A</b>	19.70	0.00	0.80	19.70	18.90	mm
<b>B</b>	5.00			5.00	5.00	mm
<b>C</b>	11.00	0.00	0.50	11.00	10.50	mm
<b>D2</b>	17.00	0.60	0.00	17.60	17.00	mm
<b>D3</b>	8.55	0.00	0.30	8.55	8.25	mm
<b>E</b>					9.50	mm
<b>G</b>	23.20	0.00	0.90	23.20	22.30	mm
<b>H1</b>	11.60	0.00	0.20	11.60	11.40	mm
<b>H2</b>	5.90	0.40	0.00	6.30	5.90	mm
<b>H3</b>	9.40	0.25	0.25	9.65	9.15	mm

Inductance factor

Material	Value	Tol +	Tol -	Unit
3C91	4900	25%	25%	nH/turns <sup>2</sup>
3C94	4100	25%	25%	nH/turns <sup>2</sup>
3C95	4900	25%	25%	nH/turns <sup>2</sup>
3C96	3800	25%	25%	nH/turns <sup>2</sup>
3D3	1850	25%	25%	nH/turns <sup>2</sup>
3F36	3100	25%	25%	nH/turns <sup>2</sup>
3F46	1900	25%	25%	nH/turns <sup>2</sup>
3H3	4100	25%	25%	nH/turns <sup>2</sup>

Power loss: 3C91

Measuring conditions	Max	Unit
----------------------	-----	------

## Core **RM8/ILP**

Power loss: 3C91				
Measuring conditions			Max	Unit
100 kHz	200 mT	60 °C	0.930	W/set
Power loss: 3C94				
Measuring conditions			Max	Unit
100 kHz	200 mT	100 °C	0.930	W/set
Power loss: 3C95				
Measuring conditions			Max	Unit
100 kHz	200 mT	100 °C	0.890	W/set
100 kHz	200 mT	25 °C	0.970	W/set
Power loss: 3C96				
Measuring conditions			Max	Unit
100 kHz	200 mT	100 °C	0.840	W/set
400 kHz	50 mT	100 °C	0.330	W/set
Power loss: 3F36				
Measuring conditions			Max	Unit
500 kHz	50 mT	100 °C	0.280	W/set
500 kHz	100 mT	100 °C	2.100	W/set
Power loss: 3F46				
Measuring conditions			Max	Unit
1000 kHz	50 mT	100 °C	0.750	W/set
3000 kHz	10 mT	100 °C	0.420	W/set

Bsat					
Measuring conditions			Material	Min	Unit
25 kHz	250 A/m	100 °C	3C91	320	mT
25 kHz	250 A/m	100 °C	3C94	320	mT
25 kHz	250 A/m	100 °C	3C95	330	mT
25 kHz	250 A/m	100 °C	3C96	340	mT
25 kHz	250 A/m	100 °C	3F36	340	mT
25 kHz	250 A/m	100 °C	3F46	330	mT

Accessories		
Ordering name	Description	Ordering code
CLI/P-RM8/ILP	Clip, with ground pin	432202101921
CSV-RM8/LP-1S-10P-ZA	Coil former, termoset, vertical	432202106111
CSV-RM8/LP-1S-12P-Z	Coil former, termoset, vertical	432202106121