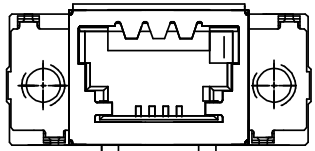
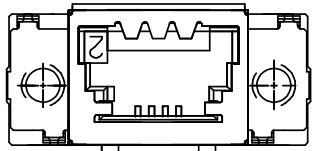


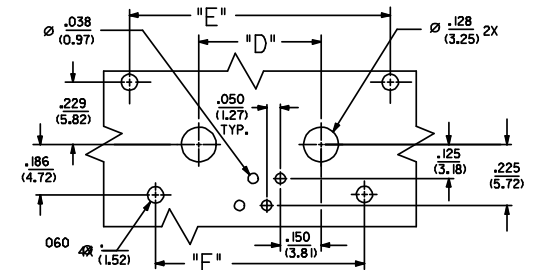
NON-KEYED VERSION A-71505-00**		KEYING OPTION "1" A-71505-01**		KEYING OPTION "2" A-71505-02**		CKT.	DIM. "A"		DIM. "B"		DIM. "C"		DIM. "D"		DIM. "E"		DIM. "F"	
E.D.P. NUMBER	ENG. NUMBER	E.D.P. NUMBER	ENG. NUMBER	E.D.P. NUMBER	ENG. NUMBER		SIZE	MM	IN.	MM	IN.	MM	IN.	MM	IN.	MM	IN.	MM
15-83-0904	A-71505-0004	15-83-0934	A-71505-0104	15-83-0954	A-71505-0204	4	28.45	1.120	21.59	.850	16.76	.660	11.43	.450	24.38	.960	19.51	.768
15-83-0906	A-71505-0006	15-83-0936	A-71505-0106	15-83-0956	A-71505-0206	6	30.99	1.220	24.13	.950	19.30	.760	13.97	.550	26.92	1.060	22.05	.868
15-83-0908	A-71505-0008	15-83-0938	A-71505-0108	15-83-0958	A-71505-0208	8	33.53	1.320	26.67	1.050	21.84	.860	16.51	.650	29.46	1.160	24.59	.968
15-83-0916	A-71505-0016	15-83-0946	A-71505-0116	15-83-0966	A-71505-0216	16	43.69	1.720	36.83	1.450	32.00	1.260	26.67	1.050	39.62	1.560	34.75	1.368



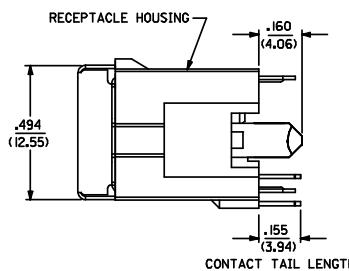
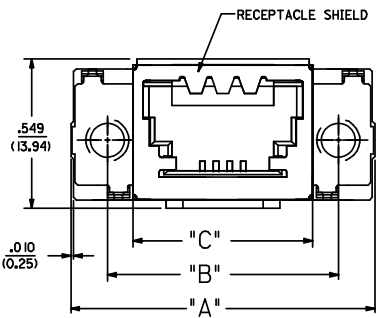
KEYING OPTION "1"
A-71505-01**



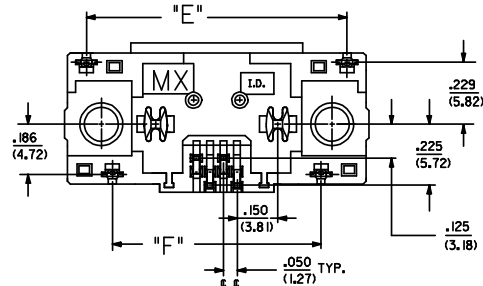
KEYING OPTION "2"
A-71505-02**



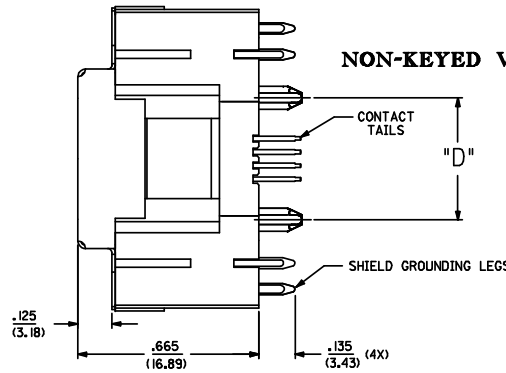
RECOMMENDED P.C.B. LAYOUT
RECEPTACLE SIDE SHOWN



CONTACT TAIL LENGTH



NON-KEYED VERSION SHOWN



- NOTES:**
- FOR ILLUSTRATION PURPOSES, THE 4 CKT NON-KEYED VERSION IS SHOWN.
 - MATERIAL:**
HOUSING: GLASS FILLED LIQUID CRYSTAL POLYMER (LCP), UL94 V-0, COLOR: BLACK.
CONTACTS: PHOSPHOR BRONZE
SHIELD: BRASS
 - PLATING:**
SHIELD: (2.54 MICROMETER)/100 MICROINCH BRIGHT TIN OVER NICKEL.
CONTACTS: PHOSPHOR BRONZE
SELECTIVE GOLD (Au) IN THE CONTACT AREA:
THICKNESS=(1.27 MICROMETER)/50 MICROINCH MINIMUM;
SELECTIVE TIN ONLY IN THE PC TAIL AREA:
THICKNESS=(2.54 MICROMETER)/100 MICROINCH MINIMUM;
NICKEL (Ni) UNDERPLATE OVER ENTIRE PIN.
 - CONFORMS TO MOLEX PRODUCT SPEC. PS-71350A.
 - REFER TO PK-70873-0257 FOR STD. PACKAGING.
 - PCB THICKNESS: .057" (1.45mm) to .100" (2.54mm)

ADDED NOTE 6 EC NO: E2008-0300 MDRW: LATERMAN CHKD: 2008/02/06 APPR: BMAUGURE 2008/02/06	QUALITY SYMBOLS ▽=0 ▽=0	GENERAL TOLERANCES (UNLESS SPECIFIED) mm INCH 4 PLACES ± --- ± --- 3 PLACES ± --- ± .010 2 PLACES ± 0.25 ± .014 1 PLACE ± 0.36 ± --- ANGULAR ±1/2°	DIMENSION STYLE IN/MM	SCALE 4:1	DESIGN UNITS METRIC	THIRD ANGLE PROJECTION	
	DRAWN BY: KJ DATE: 2/10/89	CHECKED BY: KJ DATE: 2/10/89	APPROVED BY: MM DATE: 2/10/89	MATERIAL NO. SEE CHART	DOCUMENT NO. SDA-71505-0***	SHEET NO. 1 OF 1	TITLE SALES ASSY - SEMCONN SHIELDED VER RECP WITH GROUND PEGS MOLEX INCORPORATED
	DRAFT WHERE APPLICABLE MUST REMAIN WITHIN DIMENSIONS						
	THIS DRAWING CONTAINS INFORMATION THAT IS PROPRIETARY TO MOLEX INCORPORATED AND SHOULD NOT BE USED WITHOUT WRITTEN PERMISSION						