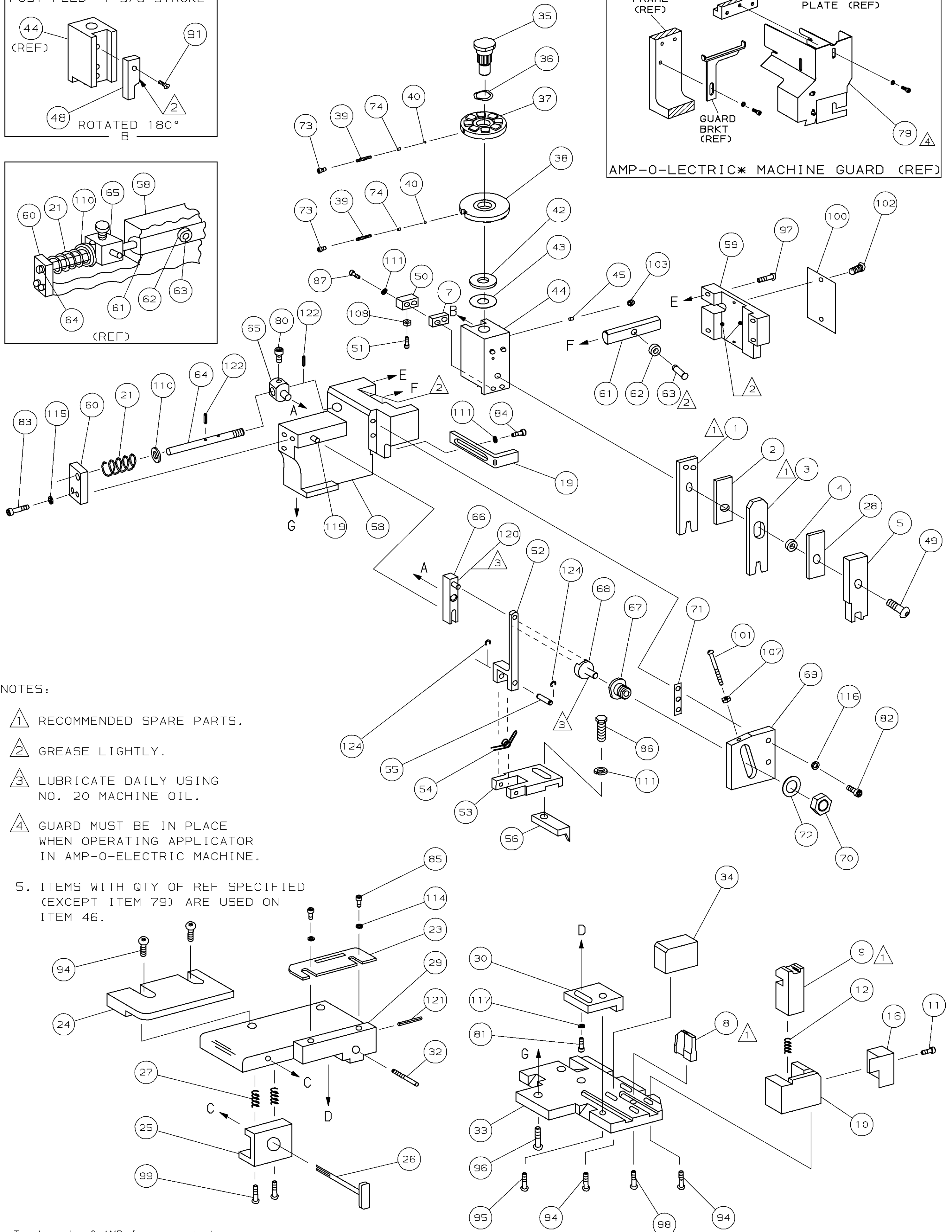
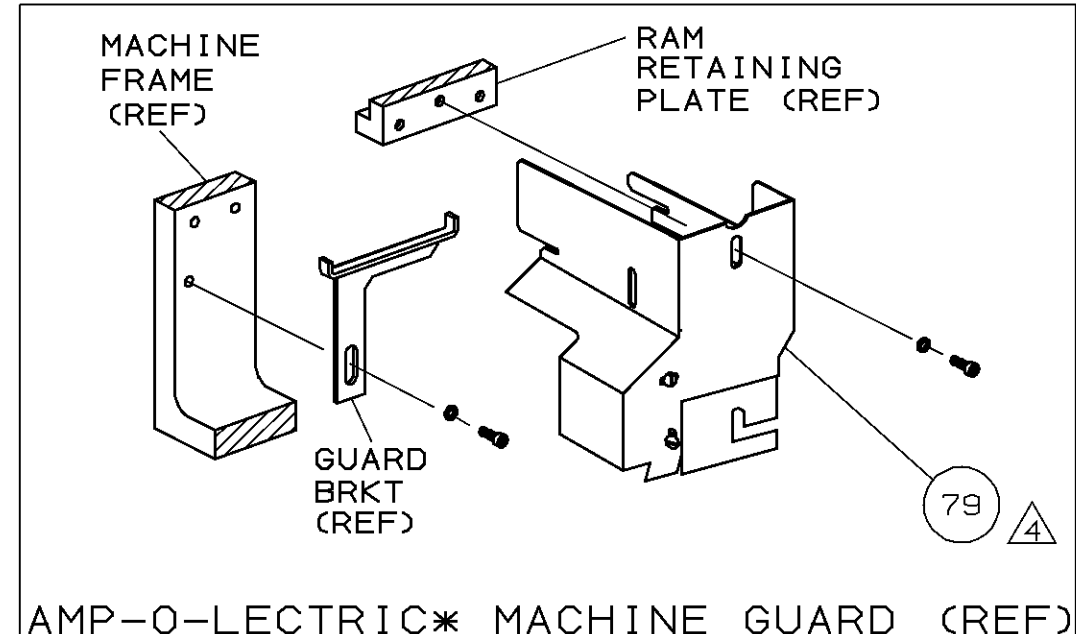
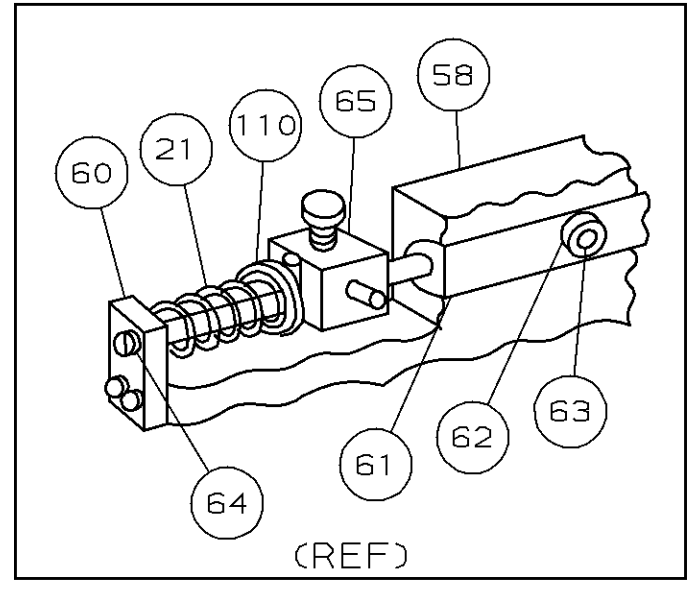
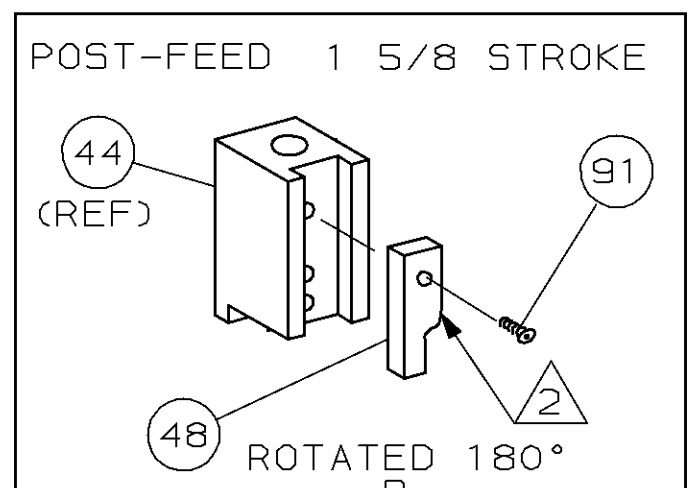


THIS DRAWING IS A CONTROLLED DOCUMENT.



- NOTES:
- 1 RECOMMENDED SPARE PARTS.
  - 2 GREASE LIGHTLY.
  - 3 LUBRICATE DAILY USING NO. 20 MACHINE OIL.
  - 4 GUARD MUST BE IN PLACE WHEN OPERATING APPLICATOR IN AMP-O-ELECTRIC MACHINE.

5. ITEMS WITH QTY OF REF SPECIFIED (EXCEPT ITEM 79) ARE USED ON ITEM 46.

JULY 8, 1988  
 THIS DRAWING IS UNPUBLISHED.  
 RELEASED FOR PUBLICATION  
 BY AMP INCORPORATED. ALL RIGHTS RESERVED.  
 © COPYRIGHT 1988

REF	QTY	PART NO	DESCRIPTION	ITEM NO
REF		21045-3	RING, RET "C" (.187ø) FEED FINGER PIN	124
REF		5-21028-1	PIN, SLT SPR (.125øx.50) ADJ ROD	123
1		4-21028-0	PIN, SLT SPR (.093øx.75) ST GUIDE PL	122
REF		1-21030-1	PIN, DOWEL (.187øx.50) LEVER	121
REF		1-21030-6	PIN, DOWEL (.187øx1.25) HOUSING	120
1		21024-5	WASHER, LOCK (NO. 10) ADJ BLOCK	119
REF		21024-5	WASHER, LOCK (NO. 10) ADJ PLATE	118
REF		21024-5	WASHER, LOCK (NO. 10) FEED GUIDE ROD	117
2		21024-2	WASHER, LOCK (NO. 4) FRONT STRIP GUIDE	116
				115
				114
				113
				112
4		21024-4	WASHER, LOCK (NO. 8) STRIPPER	111
REF		21899-4	WASHER, FLAT (5/16 DIA) SCREW ADJ	110
				109
1		21018-5	NUT, HEX (NO. 6) HOLDDOWN	108
REF		21018-5	NUT, HEX (6-32) FEED ADJ	107
				106
				105
				104
1		21009-2	SCR, SKT SET (1/4-20x.25) LOC-WEL) RAM	103
2		21017-2	SCR, DRIVE (#2x.19) ID PLATE	102
REF		6-23715-5	SCR, PAN HD (6-32x1.50) FEED ADJ	101
1		461264-1	PLATE, IDENTIFICATION	100
2		2-21002-9	SCR, BHC (10-32x.75) DRAG	99
1		22733-8	SCR, BHC (8-32x.38) LOC-WEL) ANVIL	98
REF		2-21002-9	SCR, BHC (10-32x.75) CAP	97
REF		2-22733-8	SCR, BHC (1/4-20x.62) HOUSING	96
REF		2-21002-7	SCR, BHC (10-32x.50) SG ADJ BLOCK	95
6		2-21002-2	SCR, BHC (8-32x.50) SHEAR	94
				93
				92
1		1-21002-7	SCR, BHC (6-32x.38) CAM	91
				90
				89
				88
2		2-21000-8	SCR, SKT CAP (8-32x.62) HOLD DOWN	87
1		2-22603-0	SCR, HEX HEAD (8-32x.31) FEED FINGER	86
2		1-21000-3	SCR, SKT CAP (4-40x.25) F STRIP GUIDE	85
1		2-21000-7	SCR, SKT CAP (8-32x.50) STRIPPER	84
REF		3-21000-7	SCR, SKT CAP (10-32x.75) FEED ROD GD	83
REF		3-21000-6	SCR, SKT CAP (10-32x.62) FEED ADJ BLK	82
1		3-21000-4	SCR, SKT CAP (10-32x.38) SG ADJ BLK	81
REF		3-21000-4	SCR, SKT CAP (10-32x.38) PIVOT BLOCK	80
REF		455755-1	GUARD ASSY	79
				78
				77
				76
				75
				74
2		690603-1	SPRING, ASSIST	73
2		23030-1	SCR, SKT CAP (6-32x.25) CP DISC	72
REF		458109-1	WASHER, SPECIAL	71
REF		690517-1	SPACER	70
REF		22594-8	NUT, HEX	69
REF		240628-1	PLATE, ADJUSTMENT	68
REF		240626-1	SHAFT, PIVOT	67
REF		240633-1	BUSHING	66
REF		455680-1	LEVER, INTERMEDIATE	65
REF		240629-1	BLOCK, PIVOT	64
REF		240632-2	SCREW, ADJUSTMENT FEED ROD	63
REF		240659-3	PIN, CAM ROLLER	62
REF		240658-1	ROLLER, CAM	61
REF		454398-2	ROD, FEED	60
REF		454178-1	GUIDE, FEED ROD	59
				58
				57
				56
				55
				54
				53
				52
				51
				50
				49
				48
				47
				46
				45
				44
				43
				42
				41
				40
				39
				38
				37
				36
				35
				34
				33
				32
				31
				30
				29
				28
				27
				26
				25
				24
				23
				22
				21
				20
				19
				18
				17
				16
				15
				14
				13
				12
				11
				10
				9
				8
				7
				6
				5
				4
				3
				2
				1

REMARKS		NO	REV
<b>INACTIVE</b>		TO APPLY TERMINAL	
APPL USED ON MACHINE PART NO	MACH SERIAL NO	DISTRIBUTION	
CUSTOMER NAME	APPL SERIAL NO	ORIGINAL	
ADDRESS	PURCHASE ORDER	CUSTOMER COPY	
CITY	ENG APP	FIELD ENG COPY	

CRIMPING DATA				APPLICATOR WILL APPLY	
PAD LTR	CRIMP HEIGHT	WIRE SIZE	WIRE STRIP LENGTH	927886	
A	.051	18			
B	.046	20			
C	NOT USED				
D	NOT USED				
CRIMP	SIZE	TYPE	FEED	APPL INST	
WIRE	.080	F	.500	AI 8040	
INSUL	.110	0			
WIRE RANGE	INSULATION RANGE	MACHINE NO			
20-18	.055-.090	-			
REMARKS					
AMPOMATOR					
POST-FEED					

SET UP GAGE	10-1	458637-1	L1308	AMP INCORPORATED
DR. 7/20/88	APP			Harrisburg, Pa.
CHK	REL	LOC	NO	REV
		A	D	567287-1
NAME: MINIATURE QUICK CHANGE APPLICATOR				
SIDE FEED ( C1 II SOCKET 1 )				
P/F	LTR	REVISION RECORD	APP	DATE
A1		0150-8523-98	7/98	
A		0150-6782-96		
CUSTOMER AND ASSEMBLY DRAWING				