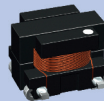
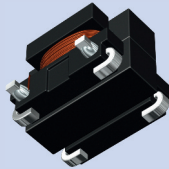
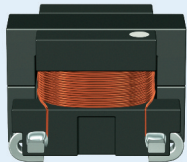


EPCOS Sample Kit 2015

SMT Current Sense Transformers

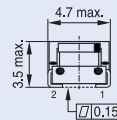
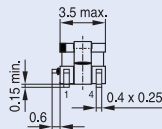
EE 4.2 Core Series – B82801A



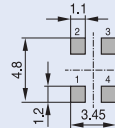
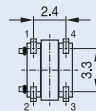
Current Sense Transformers - EE 4.2 Core (SMT)

| Turns ratio | Np : Ns | 1 : 20 | 1 : 30 | 1 : 40 | 1 : 50 | 1 : 60 |
|----------------------|---------|-----------|-----------|-----------|-----------|-----------|
| L _{min} | μH | 33 | 74 | 132 | 205 | 295 |
| Voltage-time product | V*μs | 5.76 | 8.6 | 11.5 | 14.4 | 17.3 |
| Ordering code | B82801 | A0333A020 | A0743A030 | A0134A040 | A0214A050 | A0304A060 |
| Turns ratio | Np : Ns | 1 : 70 | 1 : 100 | 1 : 125 | 1 : 150 | |
| L _{min} | μH | 400 | 820 | 1280 | 1840 | |
| Voltage-time product | V*μs | 20.0 | 28.8 | 36.0 | 43.2 | |
| Ordering code | B82801 | A0404A070 | A0824A100 | A0135A125 | A0185A150 | |

- All values measured at +25 °C ambient temperature
- Frequency range: 50 kHz ... 1 MHz
- Sensed current: The max. primary current of 7 A causes approx. +40 °C temperature rise
- Operating temperature range: -40 °C ... +125 °C
- Tape and reel packing: 12 mm blister tape, 178 mm reel
- Packing units: 600 pcs./reel; 3000 pcs./carton



Recommended PCB layout
(Top View)



IND1140-W-E

1:20

1:30

1:40

1:50

1:60

1:70

1:100

1:125

1:150

Important information: It is incumbent on the customer to check and decide whether a product is suitable for use in a particular application. Our products are described in detail in our data sheets. Our *Important notes* and the product-specific *Cautions and warnings* must be observed. All relevant information is available through our sales offices.