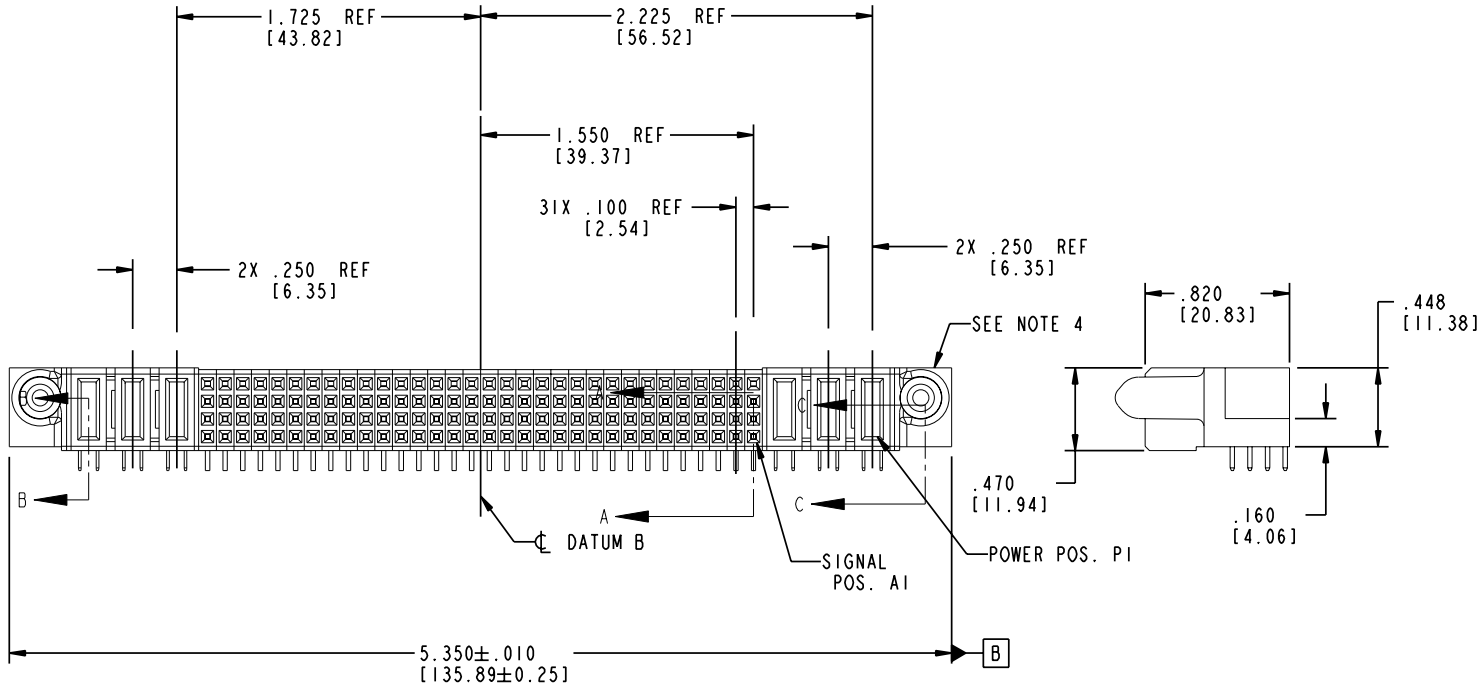


Tous droits strictement réservés. Reproduction ou communication a des tiers interdite sous quelque forme que ce soit sans autorisation écrite du propriétaire. Propriété de c FCI. Droits de reproduction FCI.

All rights strictly reserved. Reproduction or issue to third parties in any form whatever is not permitted without written authority from the proprietor. Property of FCI. Copyright FCI.

PRODUCT NO. 51770-009-- Note: ①	ROWS D C B A	POWER			SIG																POWER																						
		E2	P6	P5	P4	32	31	30	29	28	27	26	25	24	23	22	21	20	19	18	17	16	15	14	13	12	11	10	9	8	7	6	5	4	3	2	1	P3	P2	P1	E1		
			PA	PC	PC	H	H	H	H	H	H	H	H	H	H	H	H	H	H	H	H	H	H	H	H	H	H	H	H	H	H	H	H	H	H	H	H	H	H	PC	PA	PA	
						G	G	G	G	G	G	G	G	G	G	G	G	G	G	G	G	G	G	G	G	G	G	G	G	G	G	G	G	G	G	G	G	G					
						F	F	F	F	F	F	F	F	F	F	F	F	F	F	F	F	F	F	F	F	F	F	F	F	F	F	F	F	F	F	F	F						
						E	E	E	E	E	E	E	E	E	E	E	E	E	E	E	E	E	E	E	E	E	E	E	E	E	E	E	E	E	E	E	E						



CODE	DIM "M" MATING LENGTH	CONTACT TYPE
E	N/A [N/A]	SIGNAL
F	N/A [N/A]	SIGNAL
G	N/A [N/A]	SIGNAL
H	N/A [N/A]	SIGNAL
PA	.042 [1.07]	POWER
PC	.092 [2.34]	POWER

mat'l code SEE NOTE 2				tolerances unless otherwise specified				CUSTOMER		FCI www.fciconnect.com	
ltr	ecn no.	dr	date	linear	.XX±.01/0.X±0.3			COPY		projection	
A	V03-0201	DAI	02/21/03		.XXX±.005/0.XX±0.13					title	
B	DG05-0182	SJ	06/23/05	angles	.XXX±.0020/0.XX±0.051					3P +128S + 3P R/A SOLDER RECEPTACLE	
				dr	D. INGRAM	02/21/03	INCH/MM scale 1:1	product family		code	
				enr	M. MOSTOLLER	02/21/03		PwrBlade		213	
				chr	M. MOSTOLLER	02/21/03		size		dwg no	
				appd	M. MOSTOLLER	02/21/03		A 51770-009		sheet	
sheet index	revision	B	B	B	B	B			of 4		
	sheet	1	2	3	4						

Pro/E

cage code 22526

PDM: Rev: B

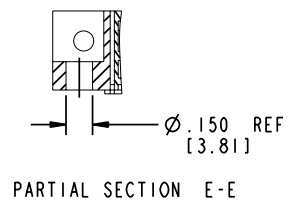
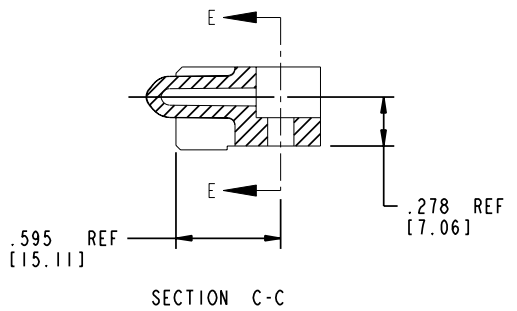
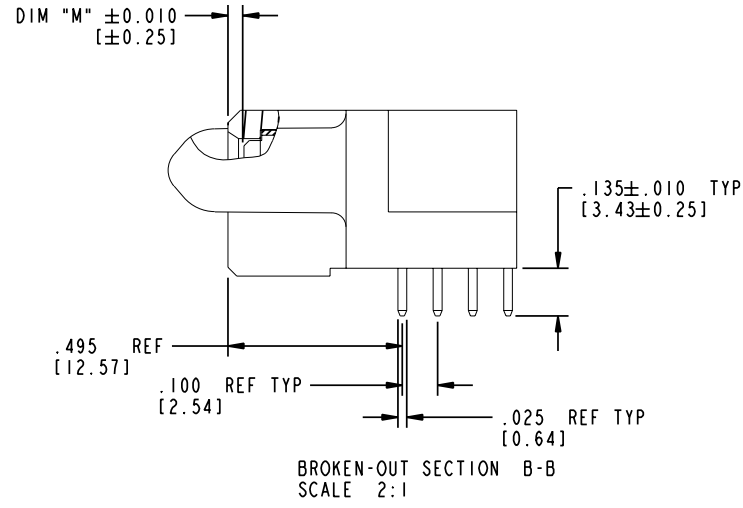
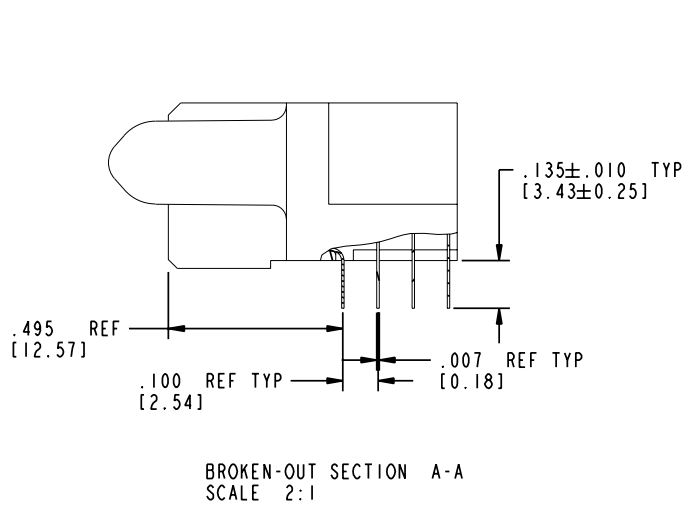
STATUS: Released

Printed: Dec 20, 2010

Tous droits strictement réservés. Reproduction ou communication a des tiers interdite sous quelque forme que ce soit sans autorisation écrite du propriétaire. Propriété de c FCI. Droits de reproduction FCI.

All rights strictly reserved. Reproduction or issue to third parties in any form whatever is not permitted without written authority from the proprietor. Property of FCI. Copyright FCI.

PRODUCT NUMBER
51770-009--
 Note: ③



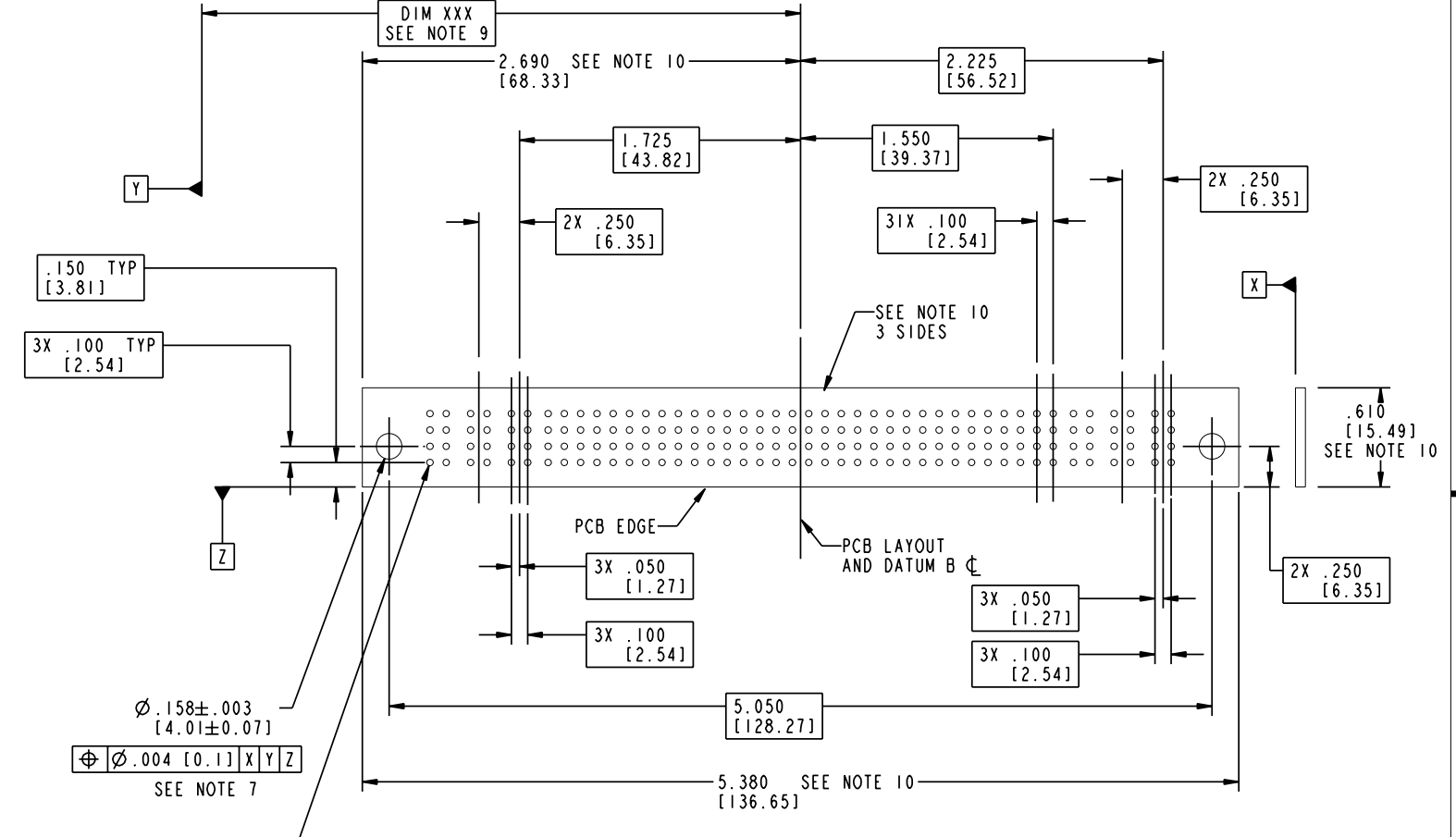
mat'l code		SEE NOTE 2		tolerances unless otherwise specified		CUSTOMER		 www.fciconnect.com	
lfr	ecn no.	dr	date	linear	.XX±.01/0.X±0.3	COPY		projection	title
B					.XXX±.005/0.XX±0.13				3P +128S + 3P
				angles	.XXX±.0020/0.XX±0.051				R/A SOLDER RECEPTACLE
				dr	D. INGRAM 02/21/03	INCH/MM		product family	PwrBlade
				enfr	M. MOSTOLLER 02/21/03	scale		size	dwg no
				chr	M. MOSTOLLER 02/21/03	1:1		A	51770-009
				appd	M. MOSTOLLER 02/21/03			code	213
sheet index	revision sheet							sheet	2 of 4

Pro/E 3 cage code **22526** 4

Tous droits strictement réservés. Reproduction ou communication à des tiers interdite sous quelque forme que ce soit sans autorisation écrite du propriétaire. Propriété de c FCI. Droits de reproduction FCI.

All rights strictly reserved. Reproduction or issue to third parties in any form whatever is not permitted without written authority from the proprietor. Property of FCI. Copyright FCI.

PRODUCT NUMBER
51770-009_
 Note: ③



$\varnothing .158 \pm .003$
 [4.01 ± 0.07]
 $\varnothing .004$ [0.1] X|Y|Z
 SEE NOTE 7

$\varnothing .040 \pm .003$
 [1.02 ± 0.07]
 $\varnothing .004$ [0.1] X|Y|Z
 SEE NOTE 8

mat'l code		SEE NOTE 2		tolerances unless otherwise specified		CUSTOMER		 www.fciconnect.com	
ltr	ecn no.	dr	date	linear	$.XX \pm .01 / 0.X \pm 0.3$ $.XXX \pm .005 / 0.XX \pm 0.13$ $.XXX \pm .0020 / 0.XX \pm 0.051$	COPY	projection	title	
B				angles	$0 \pm 2^\circ$			3P +128S + 3P R/A SOLDER RECEPTACLE	
		dr	D. INGRAM	02/21/03				product family	PwrBlade
		engr	M. MOSTOLLER	02/21/03		INCH/MM		size	dwg no
		chr	M. MOSTOLLER	02/21/03		scale	1:1	51770-009	
		appd	M. MOSTOLLER	02/21/03				code	213
sheet index	revision sheet							sheet	3 of 4

cage code **22526**

Pro/E

PDM: Rev:B

STATUS: Released

Printed: Dec 20, 2010

Tous droits strictement réservés. Reproduction ou communication à des tiers interdite sous quelque forme que ce soit sans autorisation écrite du propriétaire. Propriété de c FCI. Droits de reproduction FCI.

A
FCI

All rights strictly reserved. Reproduction or issue to third parties in any form whatever is not permitted without written authority from the proprietor. Property of FCI. Copyright FCI.

B

PRODUCT NUMBER

51770-009_
Note: ③

NOTES:

1. DIMENSIONS AND TOLERANCES ARE IN ACCORDANCE WITH ASME Y14.5M, 1994 UNLESS OTHERWISE SPECIFIED.

CONNECTOR NOTES:

② HOUSING MATERIAL: UL 94 V-0 GLASS FILLED

HIGH-TEMP THERMOPLASTIC
POWER CONTACT MATERIAL: COPPER ALLOY
SIGNAL PIN MATERIAL: COPPER ALLOY

3. PLATING:

51770-009 Singal Pin: 30u"/0.76um Au OVER 50u"/1.27um Ni ON THE CONTACT AREA,
AND 100u"/2.54um SnPb PLATING OVER 50u"/1.27um Ni ON THE TERMINATION SECTION.
Power Pin: 30u"/0.76um Au OVER 50u"/1.27um Ni ON THE CONTACT AREA,
AND 100u"/2.54um SnPb PLATING OVER 50u"/1.27um Ni ON THE TERMINATION SECTION.

51770-009LF Singal Pin: 30u"/0.76um Au OVER 50u"/1.27um Ni ON THE CONTACT AREA,
AND 78u"/2.00um Sn PLATING OVER 50u"/1.27um Ni ON THE TERMINATION SECTION.
Power Pin: 30u"/0.76um Au OVER 50u"/1.27um Ni ON THE CONTACT AREA,
AND 78u"/2.00um Sn PLATING OVER 50u"/1.27um Ni ON THE TERMINATION SECTION.

PART NUMBER 51770-009LF MEETS EUROPEAN UNION DIRECTIVE AND OTHER COUNTRY REGULATIONS AS DESCRIBED IN GS-22-008.

THE HOUSING WILL WITHSTAND EXPOSURE TO 260° PEAK TEMPERATURE FOR 10 SECONDS IN A WAVE SOLDER APPLICATION WITH A CIRCUIT BOARD.

④ MANUFACTURER'S NAME, P/N, AND DATE CODE TO APPEAR ON THIS SURFACE.

5. PRODUCT SPECIFICATION GS-12-149.
APPLICATION SPECIFICATION BUS-20-067.

PCB NOTES:

6. ALL HOLE DIAMETERS ARE FINISHED HOLE SIZE.

⑦ MOUNTING HOLES, WHERE APPLICABLE, ARE UNPLATED.

⑧ $\varnothing .0453 \pm .0010$ [1.151 ± 0.025] DRILLED HOLES PLATED WITH
.0003 [0.008] MIN SnPb OVER .001 [0.03]
TO .003 [0.08] Cu PLATING TO ACHIEVE
 $\varnothing .040 \pm .003$ [1.02 ± .07] HOLE.

⑨ "DIM XXX" TO BE DETERMINED BY THE CUSTOMER.

⑩ CONNECTOR KEEP-OUT ZONE.

mat'l code				SEE NOTE 2				tolerances unless otherwise specified				CUSTOMER				A FCI www.fciconnect.com			
ltr	ecn no.	dr	date	linear	.XX±.01/0.X±0.3			COPY				projection				title			
B					.XXX±.005/0.XX±0.13			INCH/MM				3P +128S + 3P R/A SOLDER RECEPTACLE							
				angles	0° ± 2°			D. INGRAM 02/21/03				product family				PwrBlade			
				dr	D. INGRAM 02/21/03			size				dwg no				code			
				enfr	M. MOSTOLLER 02/21/03			scale				A				213			
				chr	M. MOSTOLLER 02/21/03			1:1				51770-009				sheet			
				appd	M. MOSTOLLER 02/21/03							4 of 4							
sheet index	revision sheet																		

Pro/E

cage code **22526**

PDM: Rev:B

STATUS: **Released**

Printed: Dec 20, 2010