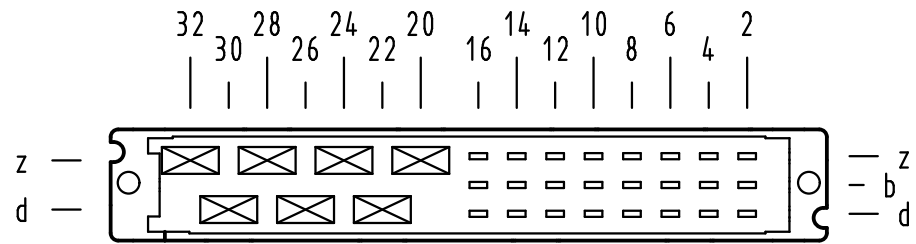
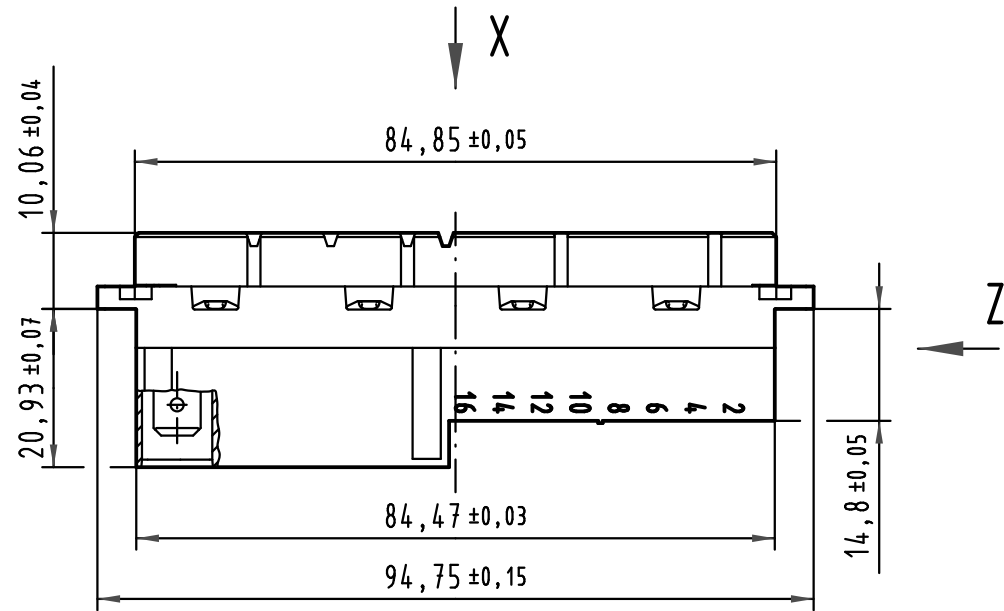


X Kontaktanordnung/ contact arrangement

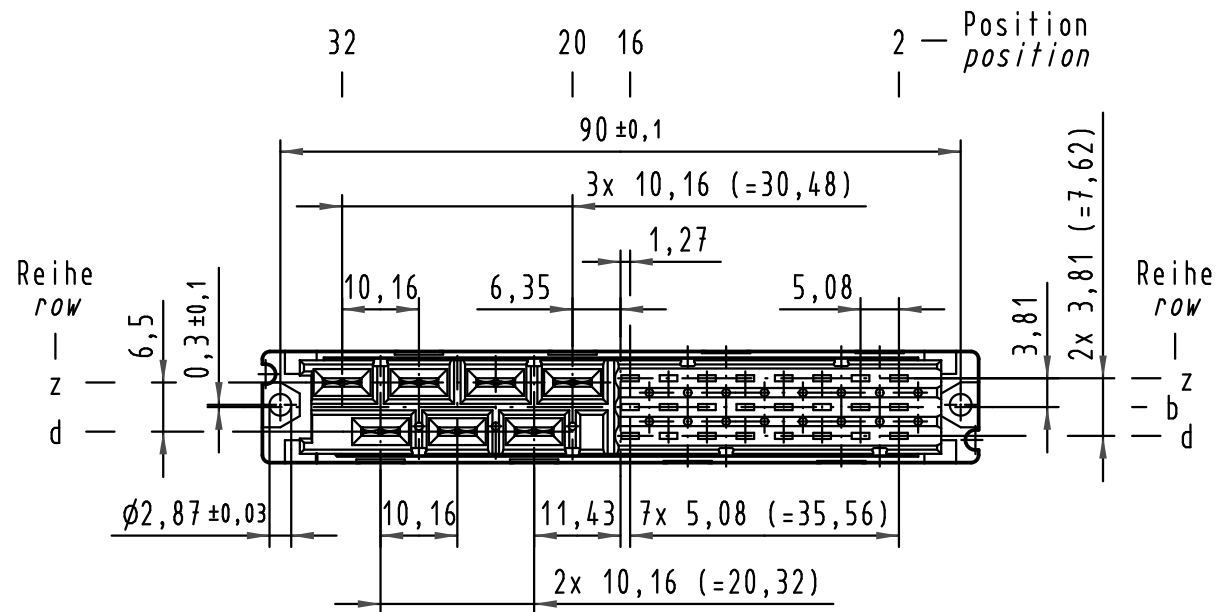
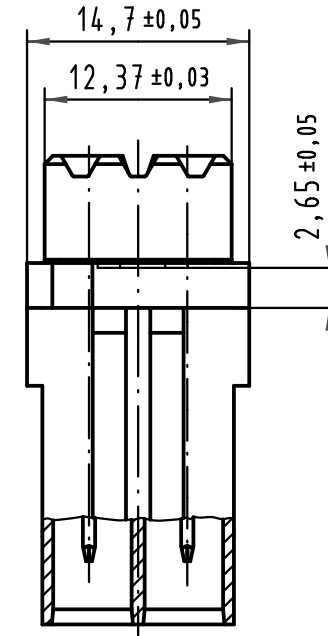


7 Faston - Kontakte
7 faston - contacts

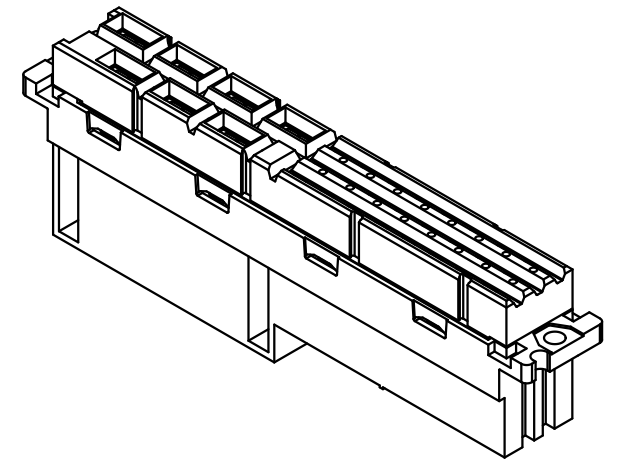
- = Kontaktposition belegt
= position with contacts
- = Kontaktposition nicht belegt
= position without contacts



Z
2:1



Kontaktfläche Ag
contact surface Ag
Faston 6,3x0,8 passend für Steckhülse
faston 6,3x0,8 suitable for female contact



	All Dimensions in mm Original Size DIN A 3		Techn. Character. complementary IEC 60603-2			Nicht tolerierte Maße/Free size tolerances complementary IEC 60603-2	
			Detail.	30.06.05	Leh.	Maßstab/Scale 1:1 2:1	Bauform/type MH female connector F crimp and H faston along
			Insp.	30.06.05	kfoe		
			Stand.				
32638			HARTING Electronics GmbH & Co. KG D-32339 ESPELKAMP				TB 09 06 231 2881
Mod.	Dat.	Name					
							Blatt/page