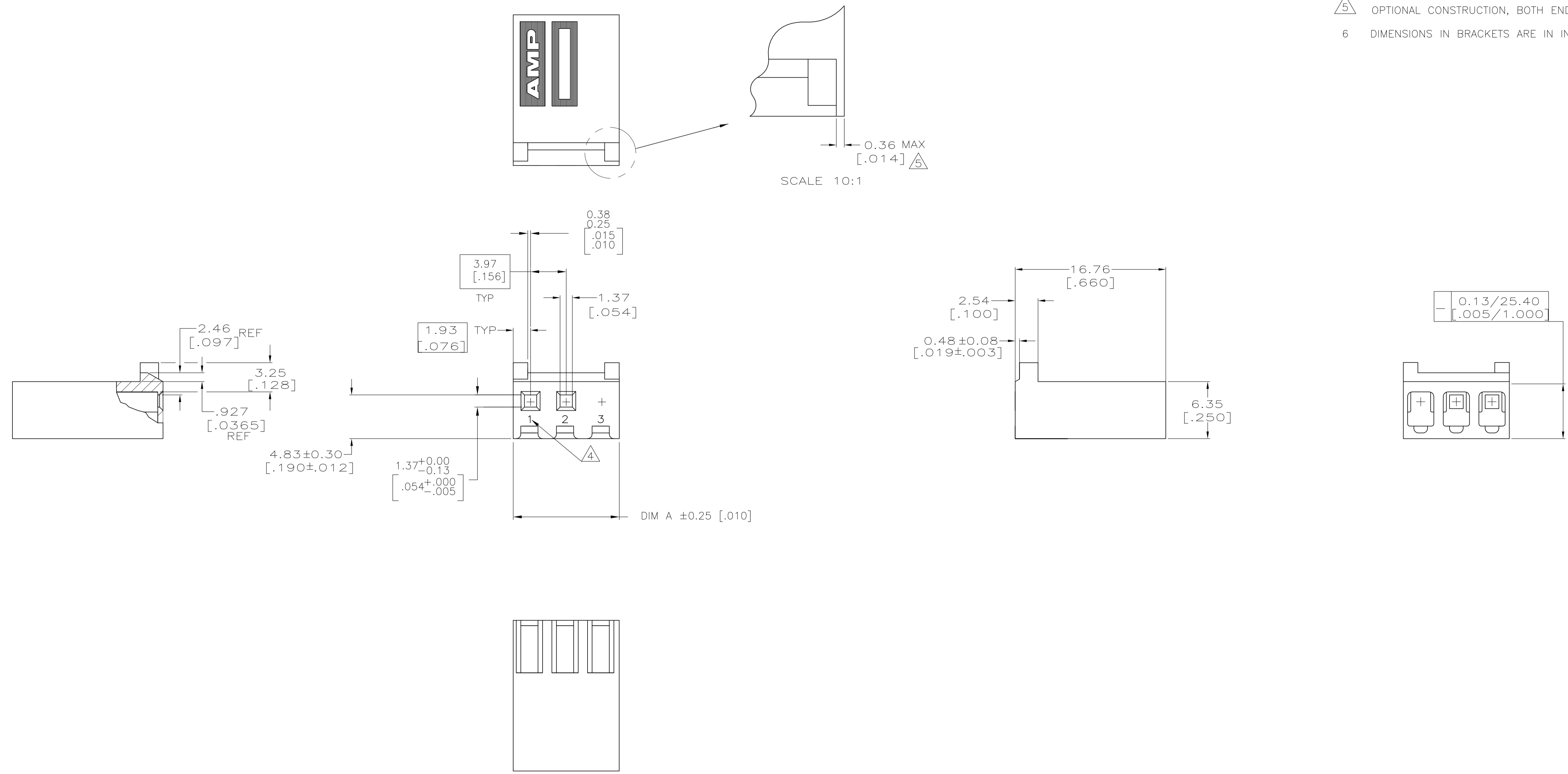


LOC	DIST	REVISIONS				
CM	0	REV	DESCRIPTION	DATE	BY	APPV
B		1	REVISED PER ECO-12-007810	28JUL12	KH	SM

- 1 UNIT ACCEPTS 1.14[.045] SQUARE OR ROUND POST.
- 2 UNIT ACCEPTS STANDARD SL-156 CONTACTS.
- 3 UNIT ACCEPTS KEYING PLUG 640254-1 AND KEYING PIN 640255-1.
- 4 IDENTIFICATION NUMBER FOR ALL POSITIONS, OR FOR POSITION 1 ONLY, WILL BE LOCATED AS SHOWN.
- 5 OPTIONAL CONSTRUCTION, BOTH ENDS.
- 6 DIMENSIONS IN BRACKETS ARE IN INCHES.



DIM A	NO OF POSN	PART NUMBER
27.69 [1.090]	7	647344-7
19.74 [.777]	5	647344-5
11.81 [.465]	3	647344-3

THIS DRAWING IS A CONTROLLED DOCUMENT.		DIN K WHITAKER 04NOV2005		TE Connectivity	
DIMENSIONS: mm [INCHES]		TOLERANCES UNLESS OTHERWISE SPECIFIED:		APVD D ROSSI 04NOV2005	
0 PLC	± -	APVD D ROSSI 04NOV2005		NAME	
1 PLC	± -	PRODUCT SPEC		HOUSING WITH LOCKING RAMP AND POLARIZING TABS, POSITION 3 BLOCKED, SL-156	
2 PLC	± -	APPLICATION SPEC		SIZE CAGE CODE DRAWING NO	
3 PLC	± 0.13 [.005]	WEIGHT		A1 00779 C=647344	
4 PLC	± -	CUSTOMER DRAWING		SCALE 4:1 SHEET 1 OF 1 REV B	
ANGLES	± -	MATERIAL NYLON, UL 94V-0		FINISH -	

