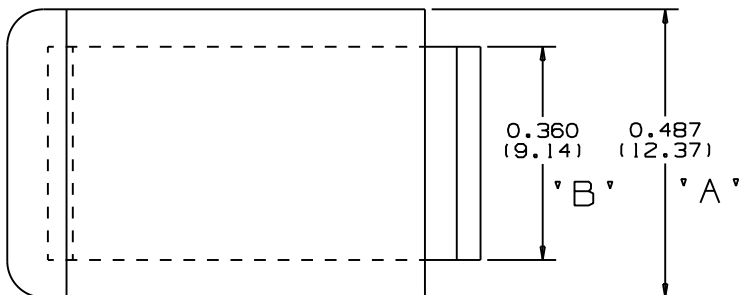
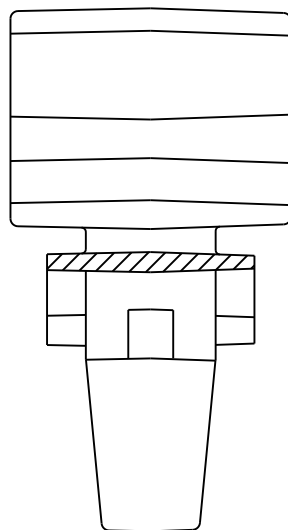
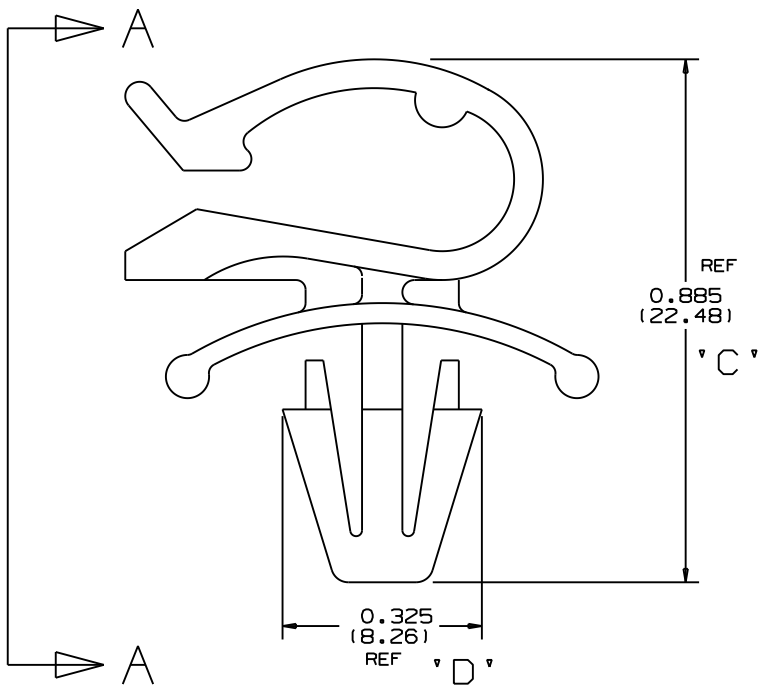


THIS COPY IS PROVIDED ON A RESTRICTED BASIS AND IS NOT TO BE USED IN ANY WAY DETRIMENTAL TO THE INTERESTS OF PANDUIT CORP.



| PANDUIT PART NUMBER | MAXIMUM CABLE DIA.<br>IN (MM) | PANEL DIMENSIONS     |                      | WEIGHT                     |  |
|---------------------|-------------------------------|----------------------|----------------------|----------------------------|--|
|                     |                               | THICKNESS<br>IN (MM) | HOLE SIZE<br>IN (MM) | lbs/100 pcs<br>(g)/100 pcs |  |
| PMCC38H25           | 0.38<br>(9.6)                 | 0.105 MAX.<br>(2.7)  | 0.250<br>(6.4)       | 0.26<br>(120)              |  |



NOTES:

1. SEE WWW.PANDUIT.COM FOR PART NUMBER SUFFIX DESIGNATION FOR PACKAGE SIZE, MATERIAL AND COLOR.
2. PARTIAL SECTION ON FRONT VIEW IS SHOWN FOR CLARITY.

DIMENSIONS IN BRACKETS ARE METRIC [mm]

CAD FILENAME/LAYERS G00239DA\_PB\_PMCC38H25\_03

**PANDUIT** CORP. TINLEY PARK, ILLINOIS

PMCC38H25  
PUSH MOUNT CORD CLIP

UNLESS OTHERWISE SPECIFIED,  
DIMENSIONAL TOLERANCES ARE:  
(.X) ±0.05 (1.3) (.XXX) ±0.010 (0.25)  
(.XX) ±0.02 (0.5) ANGLES ±5°

UNLESS OTHERWISE SPECIFIED,  
ALL DIMENSIONS ARE GIVEN  
IN INCHES, THIRD ANGLE PROJECTION.

DRAWN BY CBJ

MAT'L:

SCALE NONE

DATE 3-13-96

NYLON

DRAWING NO. G00239DA

DWG SIZE A

| REV | DATE     | BY  | CHK  | DESCRIPTION                        | ECN      | R | CUST | SUP | O.C. |
|-----|----------|-----|------|------------------------------------|----------|---|------|-----|------|
| 4   | 12-17-10 | BWG | MJVE | REVISED NOTE 1, MADE MAT'L. NYLON. | G00239DA | 4 | PBC  |     |      |