

4

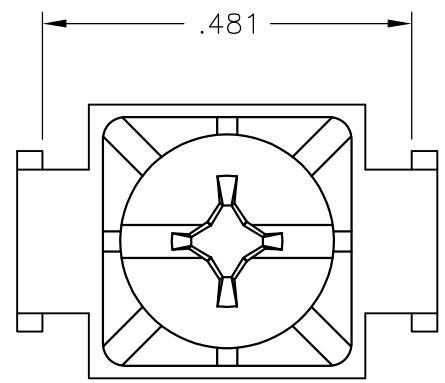
3

2

1

THIS DRAWING IS UNPUBLISHED. RELEASED FOR PUBLICATION
 © COPYRIGHT - BY TYCO ELECTRONICS CORPORATION. ALL RIGHTS RESERVED.

LOC	DIST	REVISIONS					
FT	0	P	LTR	DESCRIPTION	DATE	DWN	APVD
			A	REVISED PER ECO-07-028224	11/29/07	SS	CR

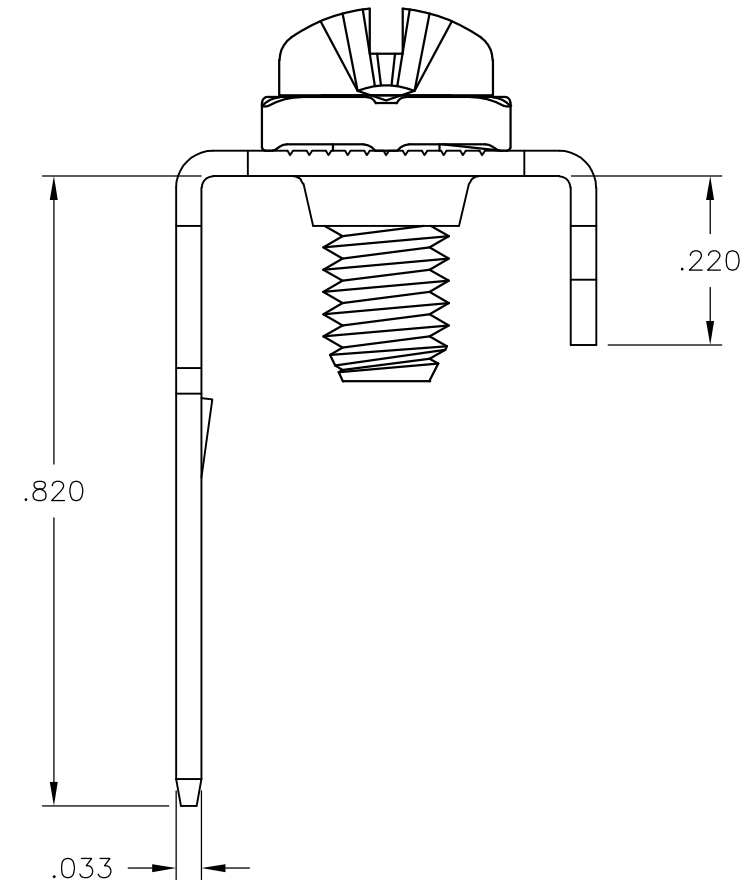
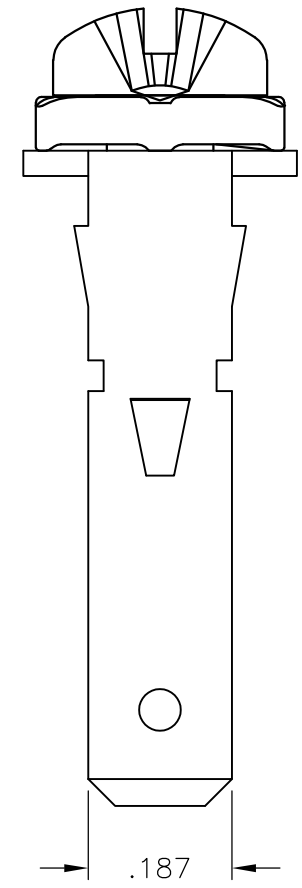


MATERIALS:
 TERMINAL: BRIGHT TIN OVER COPPER ALLOY.
 SCREWS: #8-32, ZINC PLATED STEEL. (UNLESS OTHERWISE NOTED)

ELECTRICAL:
 MAX CURRENT: 30A

MECHANICAL:
 RECOMMENDED TORQUE: 20 IN-LB
 WIRE RANGE: 10-22 AWG
 NOT A UL/CSA RECOGNIZED COMPONENT.

- ⚠ 1 SCREW IS NICKEL PLATED BRASS.
- ⚠ 2 PRELIMINARY PART NUMBER.



⚠ 2	1986217-2
	1986217-1
PART NUMBER	

THIS DRAWING IS A CONTROLLED DOCUMENT.		DWN	S SCHLEGEL	13JUL2007	Tyco Electronics Corporation Harrisburg, PA 17105-3608			
DIMENSIONS: INCHES		CHK	S YODER	7/16/07				
		TOLERANCES UNLESS OTHERWISE SPECIFIED:		APVD	NAME			
0 PLC ± -		1 PLC ± -		7/16/07	8 W/C SCREW / QCV TERMINAL ASSEMBLY			
2 PLC ± .01		3 PLC ± .005		PRODUCT SPEC	-			
4 PLC ± -		ANGLES ± 1°		APPLICATION SPEC	-			
MATERIAL -		FINISH -		WEIGHT -	SIZE	CAGE CODE	DRAWING NO	RESTRICTED TO
				A3 00779		G-1986217		-
CUSTOMER DRAWING					SCALE	4:1	SHEET	1 OF 1
							REV	A