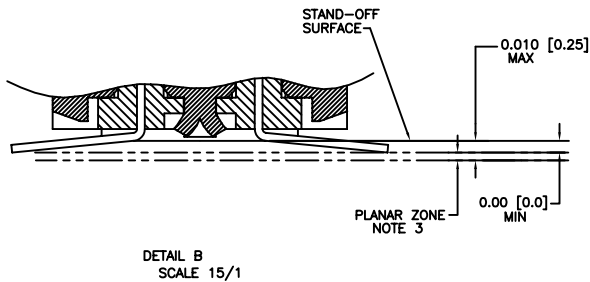
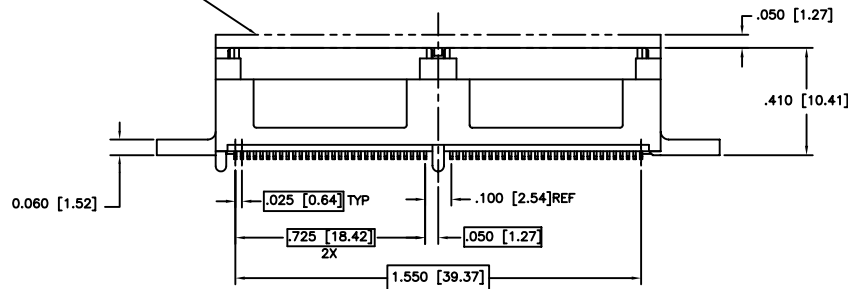
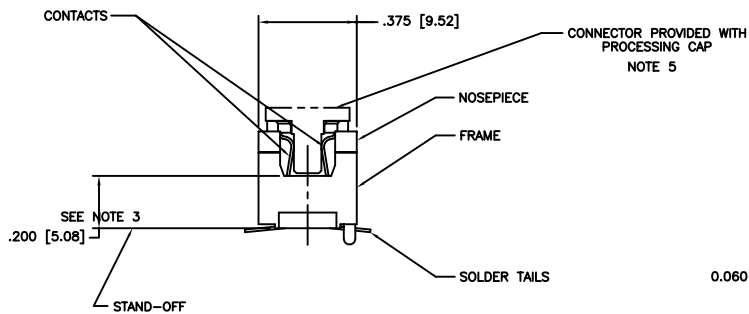
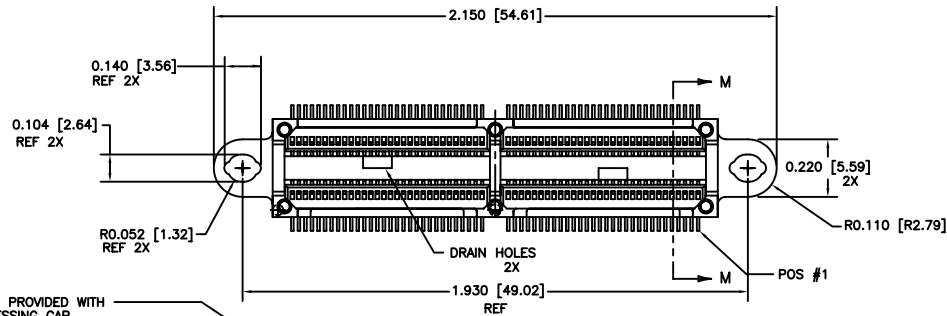
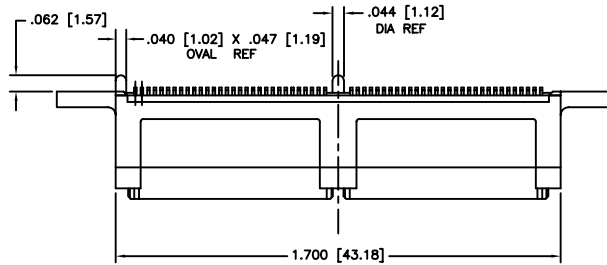
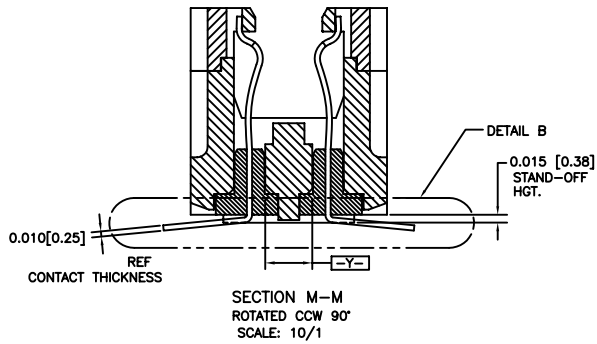
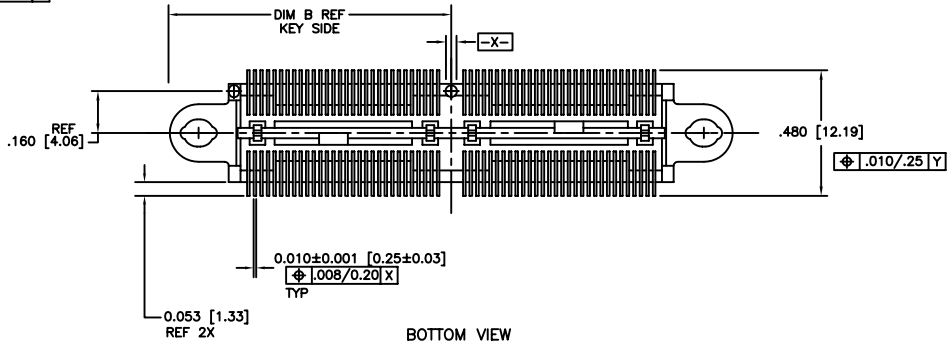
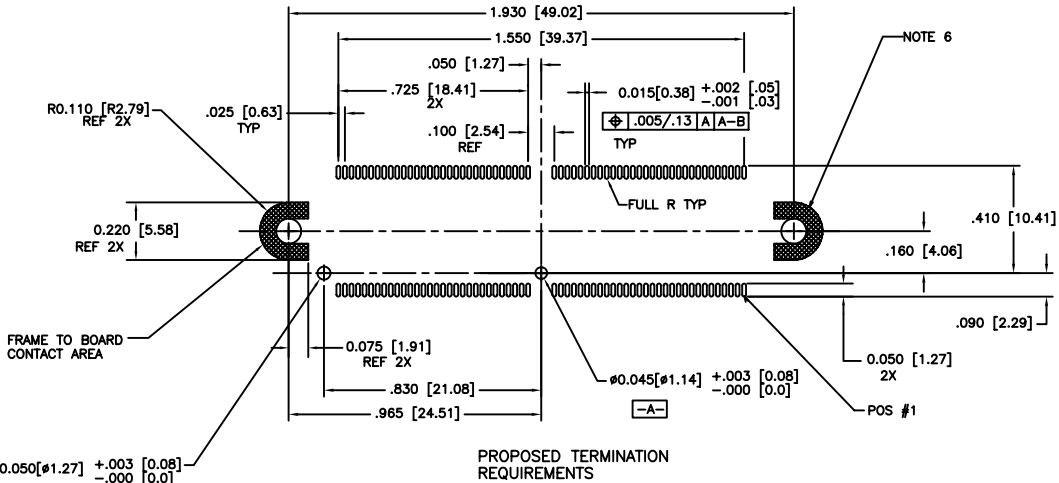


PRODUCT NUMBER  
SEE TABLE



mat'l. code		surface ISO 1902		tolerance ISO 406 ISO 1101		projection INCH/MM		product family MICROPAX	
ltr	ecp no	dr	date	tolerances unless otherwise specified		scale 1:1		title .025M SURFACE MOUNT RECEPT, DOUBLE MODULE	
A	v03-0849	GIP	8/04/03	angles	linear			dwg no 10022034	
B	m05-0082	MHT	5/06/05					sheet 1 of 2 size A3	
C	m06-0279	MNR	7/22/06	0°±2'				type Product Customer Drawing	
D	m08-0251	MHT	9/08/08	dr	T. BRUNGARD	1/21/03			
		enr	M. GRAY			1/21/03			
		chr	M. GRAY			1/21/03			
		app	M. GRAY			1/21/03			
sheet index	revision	D	D						
	sheet	1	2						

PRODUCT NUMBER	NO. OF CONTACTS	CONTACT PLATING NOTE 2
10022034-001	120	30 GXT
10022034-001LF		



NOTES:

- MATERIALS:  
DIELECTRIC: LCP  
CONTACTS: BeCu  
FRAME: ZINC ALLOY #3
- PLATING:  
SOLDER TAILS: 150u"/3.81um Sn Pb  
FRAME: 100u"/2.54um Ni  
CONTACTS: 30u"/.76um GXT OVER 50u"/1.27um Ni  
OR 60u"/1.52um GXT OVER 75u"/1.90um Ni.  
LEAD FREE OPTION:  
SOLDER TAILS: 150u"/3.81um Sn  
FRAME: 100u"/2.54um Ni  
CONTACTS: 30u"/.76um GXT OVER 50u"/1.27um Ni  
OR 60u"/1.52um GXT OVER 75u"/1.90um Ni.
- WHEN THE CONNECTOR IS MATED WITH THE OPPOSITE HALF, THE PARALLEL BD. TO BD. HGT. IS .47 ± .01. (APPLYS TO VERT. THRU & SURFACE MT. STYLES)
- WHEN MEASURED IN THE UNRESTRAINED STATE, THE BOTTOM EDGE OF ALL SOLDER TAIL TIPS SHALL LIE IN A PLANAR ZONE AS DESCRIBED IN DETAIL B. THE ZONE IS DEFINED BY A PLANE ESTABLISHED ACROSS THE BASE OF THE TWO MOUNT LUG/STAND-OFFS.
- DO NOT REMOVE PROCESSING CAP UNTIL SOLDERING IS COMPLETED. CAP WILL PREVENT POTENTIAL NOSE PIECE BOW DURING HIGH TEMP. SOLDERING PROCESS.
- FOR HOLDDOWN APPLICATION DATA, INCLUDING HOLE SIZES FOR VARIOUS TYPES OF HARDWARE SEE TA-932.
- PART NUMBER WITH LF SUFFIX AT THE END IS LEAD FREE.
- IF "LF" P/N THE PRODUCT MEETS EUROPEAN UNION DIRECTIVES AND OTHER COUNTRY REGULATION AS DESCRIBED IN GS-22-008.
- THE HOUSING WILL WITHSTAND EXPOSURE TO 260°C PEAK TEMPERATURE FOR 20 SECONDS IN A CONVECTION, INFRA-RED OR VAPOR PHASE REFLOW OVEN.
- SEE BUS-20-084 (SET-UP APPLICATION SPEC.) FOR REFERENCE.

mat'l. code		surface	tolerance	projection	product family
		ISO 1902	ISO 406 ISO 1101		MICROPAX
ltr	ecn no	dr	date	title	
D				.025M SURFACE MOUNT RECEPT, DOUBLE MODULE	
tolerances unless otherwise specified				INCH/MM	scale 1:1
angles		linear	XX±.01/XX±.03	dwg no	
0°±2°		XXX±.005/XX±.013	XXX±.002/XXX±.0051	sheet 2 of 2 size	
dr		T. BRUNGARD	1/21/03	10022034	
enr		M. GRAY	1/21/03	A3	
chr		M. GRAY	1/21/03	type	
appd		M. GRAY	1/21/03	Product Customer Drawing	
sheet	revision				
index	sheet				



Copyright FCI