

ATLANTIC VERSION TERMINATOR INTERFACE ADAPTER	PART NUMBER	REVISION	DESCRIPTION	FEED TYPE	APPLICATOR STYLE CONVERSION CHART							
					CONVERT TO	PART NUMBERS REQUIRED						
	2151805-2	B	FINE CRIMP HEIGHT ADJUST	PNEUMATIC	-	-	1338683-8	5-18022-5	-	-	-	
	2151805-5	B	FINE CRIMP HEIGHT ADJUST	SERVO LATCH PLATE ⁴	SERVO LATCH PLATE	2119951-1	-	8-2151805-5	1901094-3	-	2168400-6 (QUANTITY 2)	
	2151805-6	B	NON-CRIMP HEIGHT ADJUST	SERVO LATCH PLATE ⁴	SERVO LATCH PLATE ¹²	-	-	1338683-8	5-18022-5	-	-	
	2151805-7	B	FINE CRIMP HEIGHT ADJUST	NONE	-	-	-	-	-	-	-	
	7-2151805-7	A	CRIMP TOOLING KIT	-	-	-	-	-	-	-	-	

APPLICATOR DATA		
CRIMP	SIZE	TYPE
WIRE	4.06 mm [.160]	F
INSUL	4.57 mm [.180]	O

APPLICATOR INSTRUCTIONS
408-10389

TERMINAL DATA: TE TERMINAL		TE CRIMP SPECIFICATION	
TERMINAL NAME: LOCKING TAB REC. 8.1			
WIRE STRIP LENGTH		INSULATION DIAMETER RANGE	
5.65-6.65 mm [.222-.262 IN]		Ø3.20-4.30 mm [.126-.169 IN]	
TERMINAL APPLICATION SPECIFICATION	114-94254		
TERMINALS APPLIED ¹⁰			
TE TERMINAL	TE TERMINAL	TE TERMINAL	TE TERMINAL
1-962892-1	2-962892-1		

WIRE SIZE	CRIMP HEIGHT mm [INCH]	CRIMP HEIGHT REFERENCE SETTING
6.00mm2	2.58+/-0.05 [.102+/- .002]	5.1
4.00mm2	2.20+/-0.05 [.087+/- .002]	9.6

- ¹ RECOMMENDED SPARE PARTS
- ² GREASE BEARING SURFACES LIGHTLY
- 3. LUBRICATE DAILY PER THE APPLICATOR INSTRUCTION SHEET SUPPLIED WITH THE APPLICATOR.
- ⁴ APPLICATOR SPECIFIC DATA TO BE ENTERED INTO BLANK MEMORY CHIP AT ASSEMBLY. SEE BELOW FOR PART NUMBER:
 PNEUMATIC FEED WITH "SMART APPLICATOR" CONVERSION: 8-2151805-4
 SERVO FEED WITH "FINE CRIMP HEIGHT ADJUST": 8-2151805-5
 SERVO FEED WITH "NON-CRIMP HEIGHT ADJUST": 8-2151805-6
- 5. ADJUSTMENT OF THE STRIPPER MAY BE REQUIRED WHEN MOVING THE APPLICATOR BETWEEN BENCH AND LEADMAKER APPLICATIONS.
- ⁶ APPLY PART NUMBER 1-23419-5 LOCTITE TO THREADS OF ITEMS 50, 62
 APPLY PART NUMBER 2-23419-6 LOCTITE TO THREADS OF ITEMS 242.
 FOR -6 ONLY APPLY PART NUMBER 1-23419-5 LOCTITE TO THREADS OF ITEM 37.
- ⁷ GREASE THREADS, GROOVE AND O-RING ON ITEMS 35 & 252.
- ⁸ MAGNET, ITEM 166 MUST BE ORIENTED CORRECTLY IN ORDER TO PROPERLY ACTUATE THE COUNTER.
- ⁹ CRIMP HEIGHT REFERENCE SETTING WAS THE SETTING USED WHEN THE APPLICATOR WAS QUALIFIED AT THE FACTORY. ADJUSTMENT MAY BE NECESSARY WHEN RUNNING APPLICATOR IN THE FIELD.
- ¹⁰ TERMINAL PITCH NOT COMPATIBLE WITH MECHANICAL FEED.
- ¹¹ TO CONVERT THE APPLICATOR TO A NON-CARRIER CUTTING STYLE, REMOVE ITEM 13 AND ATTACH TO THE LOCATION ON THE BACK SIDE OF THE HOUSING. REFER TO INSTRUCTION SHEET FOR ADDITIONAL INFORMATION.
- ¹² WHEN ASSEMBLING A NON CRIMP HEIGHT ADJUST APPLICATOR (-6) USE SHIMS FROM ITEM 260 TO ACHIEVE A NOMINAL SHIM HEIGHT OF 3.22.

***WARNING**
 ON INSTALLATION, SET WIRE DISC, ITEM 40 TO LARGEST WIRE SIZE SETTING. USE OF SETTINGS BELOW MINIMUM REQUIRED CRIMP HEIGHT SETTING WILL CAUSE DAMAGE TO CRIMP TOOLING.

-77	-7	-6	-5	-2	PART NO	DESCRIPTION	ITEM NO
-	-	1	-	-	2119957-2	APPLICATOR SHIM PACK	260
-	1	-	1	1	8-21084-0	O-RING, .676 ID, .070 DIA. MAT.	252
-	-	-	-	1	2119640-1	PUSH ROD, AIR FEED	250

ATLANTIC VERSION
 Shown on sheets 1 of 4 & 2 of 4
 (Pacific version shown on sheets 3 of 4 & 4 of 4)

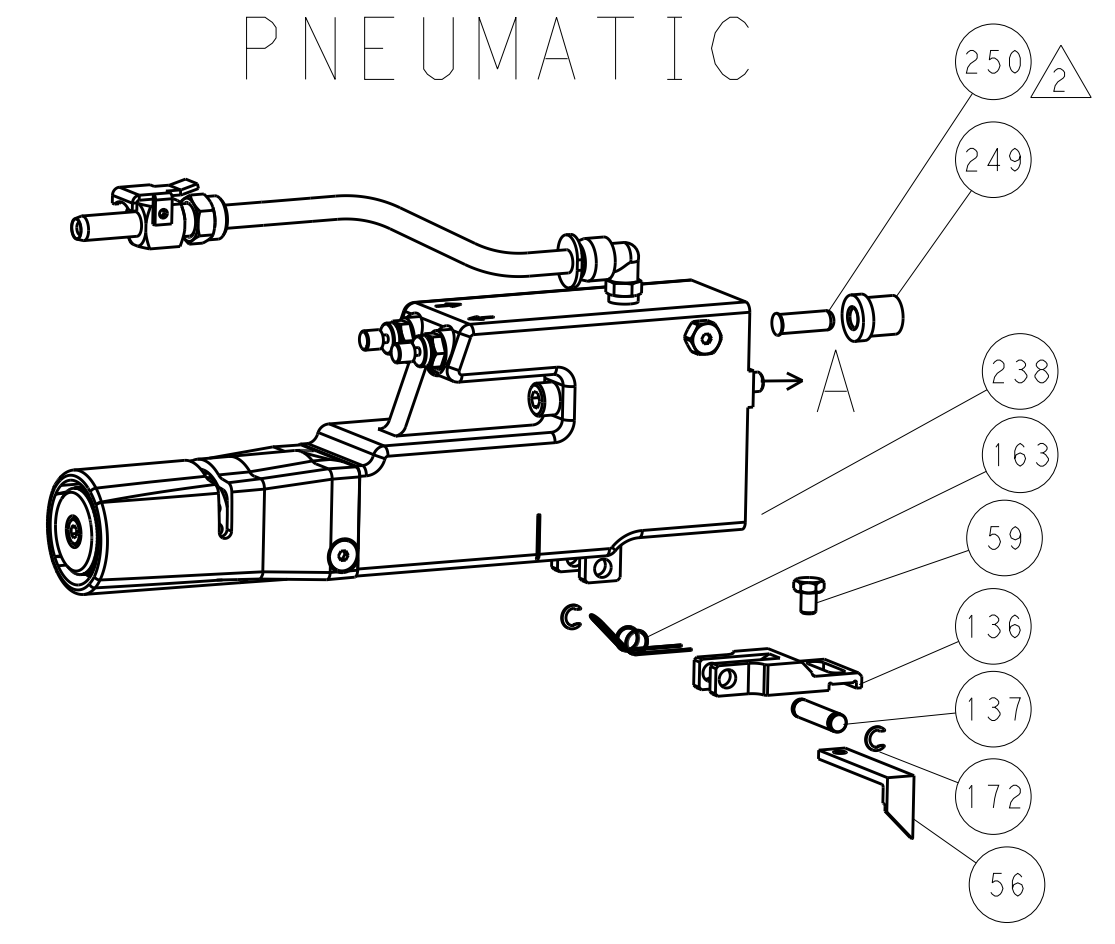
SET UP GAUGE	LOC	DIST	REVISIONS					
2119599-1	A	66	P	LTN	DESCRIPTION	DATE	OWN	APVD
			A		RELEASED	07JAN2013	CC	SX
			B		ECR-13-018249	21NOV2013	KH	TE
			B1		ECR-15-011798	07AUG2015	KH	CT

-	-	-	-	1	2079988-1	BUSHING, LCH5-12, MISUMI	249
-	-	-	-	1	2119641-1	FEED CAM, AIR FEED	248
-	1	-	1	1	2119798-1	DETENT PIN	247
-	1	-	1	1	1-22279-3	SPRING, COMPRESSION	246
-	-	1	-	-	2119758-1	RAM, AMP STYLE, SIDE FEED, NON-ADJ.	245
-	1	1	1	1	2119082-7	CAM, SNAIL, INSULATION ADJUSTMENT	244
-	1	1	1	1	2079764-1	WASHER, WAVE SPRING, CREST-TO-CREST	243
⁶	-	1	1	1	2119083-1	RETAINER, INSULATION DIAL	242
-	1	1	1	1	7-18023-7	SCR, SKT HD CAP M3 X 4.0	241
-	-	2	2	-	2168400-6	SHCS, LOW HEAD, RoHS, M5 X 16	240
-	-	-	-	1	2063440-2	AIR FEED MODULE	238
-	-	1	1	-	2119740-2	TAG, IDENTIFICATION	213
-	-	1	1	-	1901094-3	SPACER, FEEDER	198
-	1	1	1	1	993111-1	PIN, SLOTTED SPRING 3.0 X 20.0	177
-	1	1	1	1	8-22280-7	SPRING, COMPRESSION	176
-	1	1	1	1	1752353-2	GUIDE PIN, HOLDDOWN	175
-	1	1	1	1	1901680-2	GUIDE PIN, HOLDDOWN	174
-	-	-	-	2	21045-3	RING, RETAIN, EXTERN, 3/16 CRESCENT	172
-	1	1	1	1	994969-1	MAGNET, RARE EARTH HIGH ENERGY	166
-	REF	REF	REF	REF	994970-2	COUNTER, MAGNETIC	164
-	-	-	-	1	240638-1	SPRING, FEED FINGER	163
-	-	-	-	1	3-23627-7	PIN, RETAIN, GRVD, 3/16 X .854	137
-	-	-	-	1	2119799-1	HOLDER, FEED FINGER, AF	136
-	-	REF	REF	-	SEE NOTE 4	MEMORY CHIP, PROGRAMMED	135
-	-	1	1	-	1633743-1	SERVO FEED LATCH ASM	133
-	-	REF	REF	-	2119944-1	FEED FINGER ASSEMBLY, SF	117
-	1	1	1	1	318563-1	GUARD, FRONT CHIP	89
-	1	1	1	1	455888-4	SPACER, CRIMPER	82
-	1	1	1	1	2119956-1	DOCUMENTATION PACKAGE	71
-	1	1	1	1	2119791-9	DEPRESSOR, WIRE	70
-	1	-	-	1	2119740-1	TAG, IDENTIFICATION	67
-	2	2	2	2	2168078-1	SCREW, DRIVE, RH, RoHS, 2 x .188	66
-	1	-	1	1	2119793-1	LIMITER, ADJUSTMENT BOLT	63
⁶	-	3	-	3	992763-5	SCR, SET, SOC, CONE POINT, M3 X 4.0	62
-	1	1	1	1	2079383-4	SCR, BHSC, RoHS (M4 X 8)	60
-	-	-	-	1	5-18022-5	SCR, HEX HD CAP, M4 X 6.0	59
-	-	-	-	1	1338683-8	FEED PAWL	56
-	4	4	4	4	2168400-1	SHCS, LOW HEAD, RoHS, M4 X 12	54
-	1	1	1	1	1-5018030-0	NUT, HEX, REG, RoHS, M3.5	52
⁶	-	1	1	1	1901681-1	HOLDDOWN, TERMINAL	51
-	1	1	1	1	2-1752354-4	STANDOFF, HOLD-DOWN	50
-	-	-	-	1	18023-9	SCR, SKT HD CAP M4 X 6.0	49
-	1	1	1	1	2119656-9	APPLICATOR BASIC ASSEMBLY, SF	46
-	1	-	1	1	2119370-1	RAM, AMP STYLE, SIDE FEED	44
-	1	1	1	1	2079383-7	SCR, BHSC, RoHS (M8 X 25)	41
-	1	-	1	1	2119645-1	DISC, NUMBERED FA WIRE ADJUSTMENT	40
-	1	-	1	1	2119957-1	APPLICATOR SHIM PACK	39
⁶	-	1	1	1	1-2119644-3	RAM WASHER, PRECISION	38
-	1	1	1	1	2119085-1	FA HEAD, ATLANTIC STYLE	37
-	1	-	1	1	2119092-1	BOLT, ADJUSTMENT	35
-	1	1	1	1	1752356-6	SUPPORT, TERMINAL	34
-	2	2	2	2	1-2079383-3	SCR, BHSC, RoHS (M4 X 25)	33
-	1	1	1	1	2161328-1	HEX HEAD, FLANGED, M5 X 8mm LONG	32
-	1	1	1	1	2-1320908-3	SPACER, STRIP GUIDE	30
-	1	1	1	1	2119959-2	ASSEMBLY, STRIP GUIDE	29
-	1	1	1	1	1-455888-0	SPACER, CRIMPER	28
-	1	1	1	1	1320928-6	STRIP GUIDE	24
-	1	1	1	1	2168083-2	SCR, SKT HD CAP, RoHS, M4 X 8.0	21
-	1	1	1	1	1-18028-2	WASHER, FLAT, REG M4	20
-	1	1	1	1	2119533-1	STRIPPER, SIDE FEED	19
¹	-	1	1	1	2119806-1	INSERT, SHEAR	13
-	1	1	1	1	3-22280-3	SPRING, COMPRESSION	12
-	1	1	1	1	1-356885-4	STOP, SHEAR	11
¹	-	1	1	1	2119805-1	SHEAR HOLDER, FRONT	10
¹	-	1	1	1	454276-5	FLOATING SHEAR, FRONT	9
¹	1	1	1	1	1-1633928-3	ANVIL, COMBINATION	8
-	-	-	-	-	-	-	7
-	-	-	-	-	-	-	6
-	1	1	1	1	1-2119757-2	DEPRESSOR, SHEAR	5
-	1	1	1	1	4-238011-4	BLOCK, CRIMPER SPACER	4
¹	1	1	1	1	7-2119784-6	CRIMPER, INSULATION O PREMIUM	3
-	-	-	-	-	-	-	2
¹	1	1	1	1	3-1752057-6	CRIMPER, WIRE PREMIUM, STEPPED	1
-77	-7	-6	-5	-2	PART NO	DESCRIPTION	ITEM NO

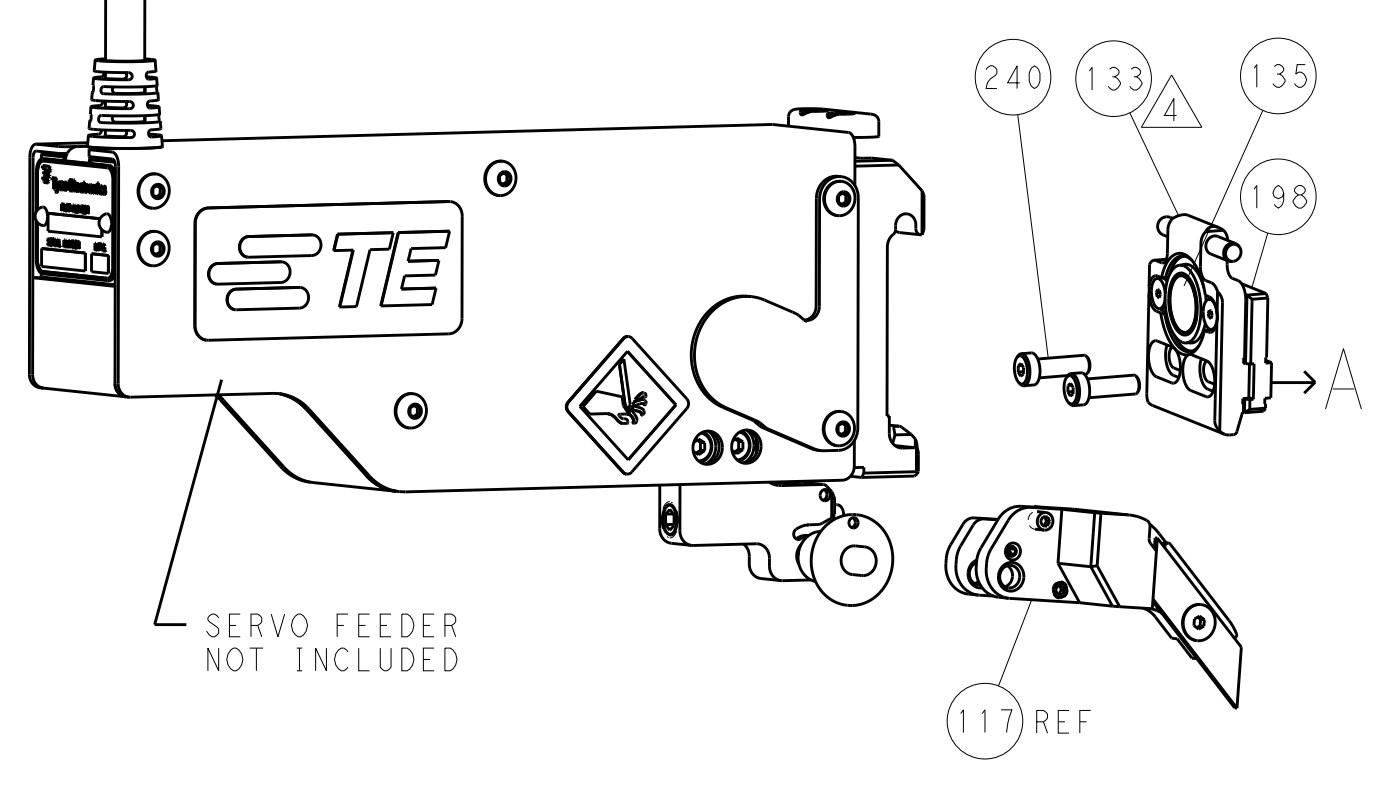
DIMENSIONS:		TOLERANCES UNLESS OTHERWISE SPECIFIED:		OWN	15NOV2012		TE Connectivity Harrisburg, PA 17105-3608
mm		0 PLC ±.05 1 PLC ±.05 2 PLC ±.05 3 PLC ±.05 4 PLC ±.05 ANGLES ±.0001		CHK	15NOV2012		
		FINISH		APVD	15NOV2012	NAME Ocean Side Feed Applicator	
MATERIAL		FINISH		PRODUCT SPEC		SIZE CASE CODE DRAWING NO RESTRICTED TO	
				APPLICATION SPEC		A1 00779 ©=2151805	
				WEIGHT		Customer Accessible Production Drawing SCALE 1:2 SHEET 1 OF 4 REV B1	

LOC	DIST	REVISIONS					
		P	LTN	DESCRIPTION	DATE	DWN	APVD
A	66	-	-	SEE SHEET 1	-	-	-

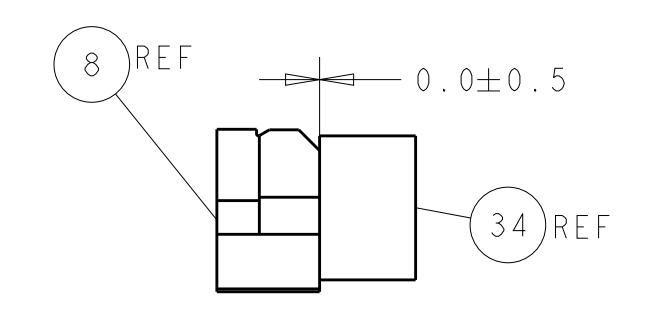
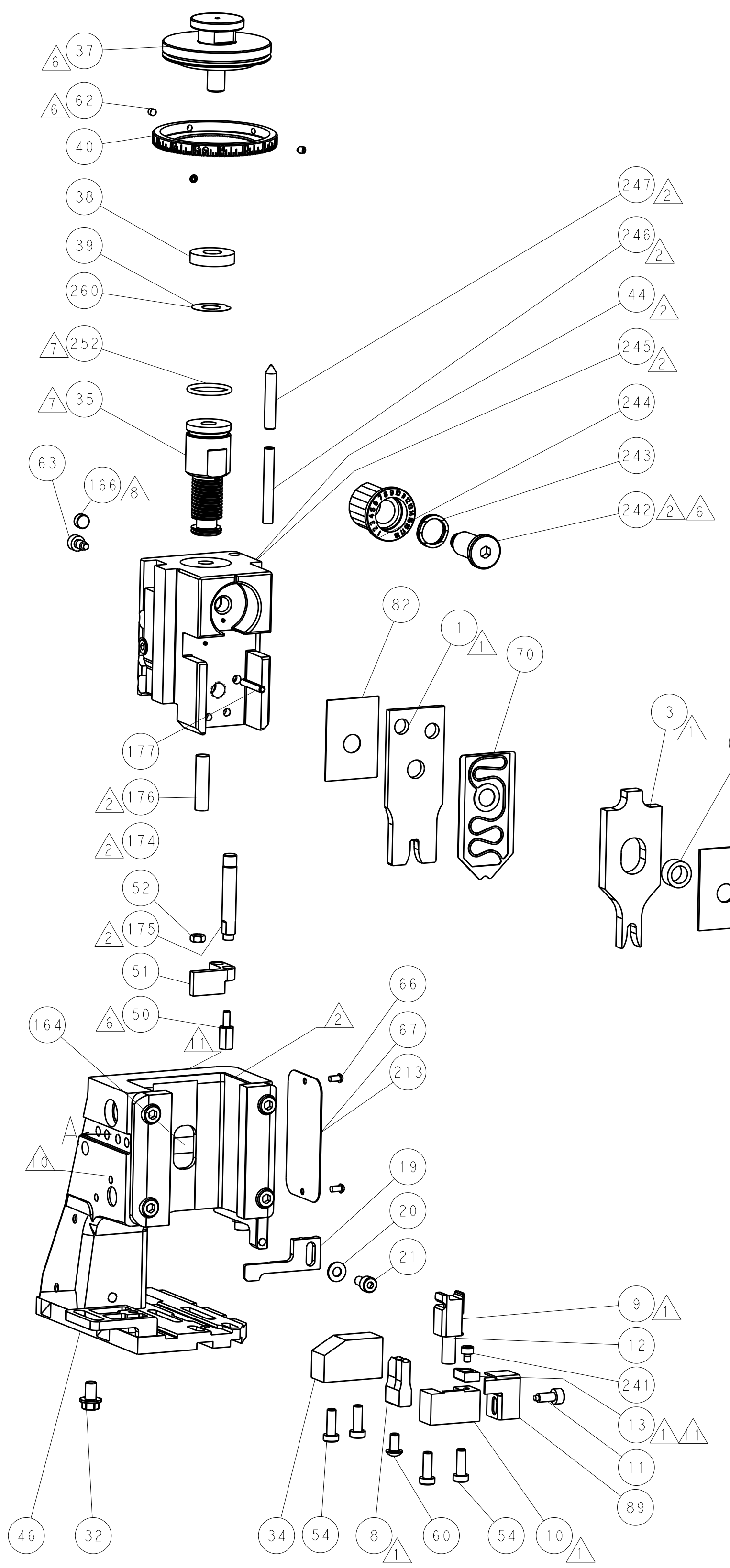
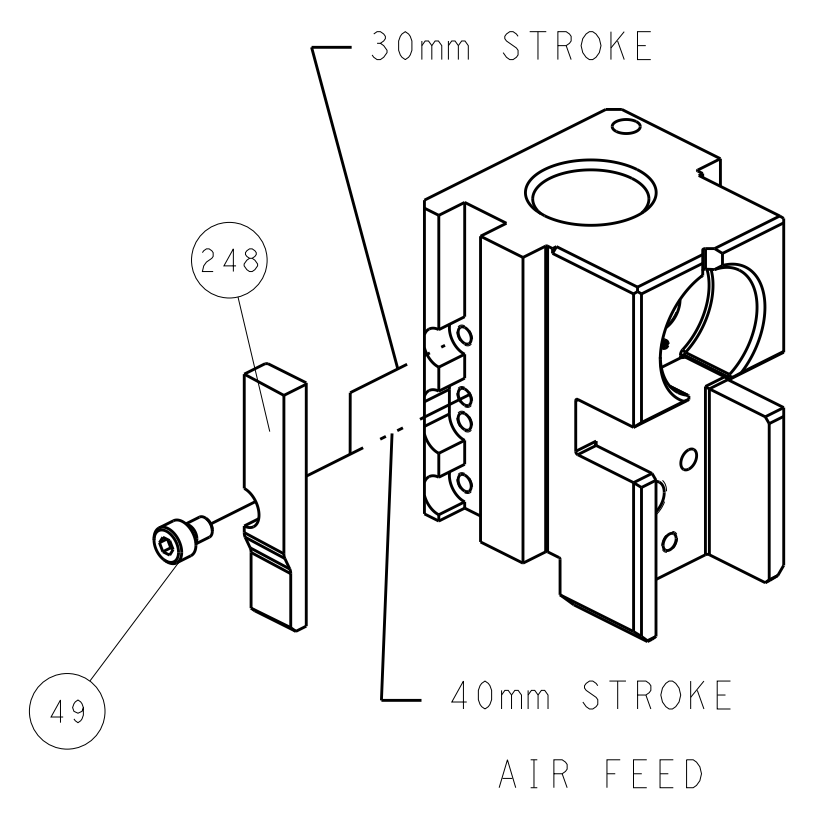
PNEUMATIC



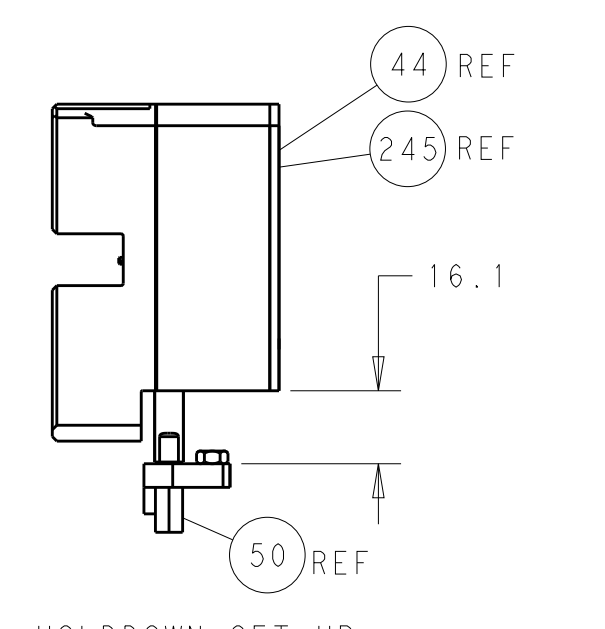
SERVO LATCH PLATE



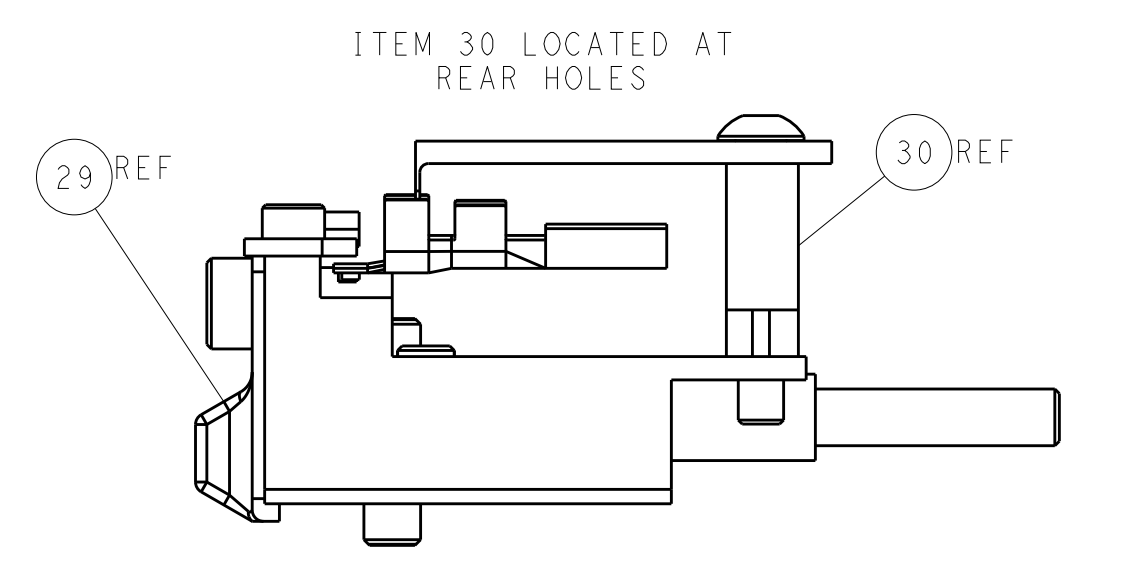
CAM POSITION



TERMINAL SUPPORT LOCATION



HOLDDOWN SET-UP



FEED TRACK POSITION GUIDE BY INSULATION BARREL

ATLANTIC VERSION
 Shown on sheets 1 of 4 & 2 of 4
 (Pacific version shown on sheets 3 of 4 & 4 of 4)

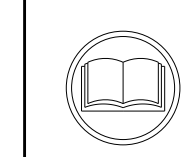
DIMENSIONS:		TOLERANCES UNLESS OTHERWISE SPECIFIED:		DWN: C. CHEN 15NOV2012		TE Connectivity	
mm	0 PLC ±0.5	1 PLC ±0.5	2 PLC ±0.13	3 PLC ±0.013	4 PLC ±0.001	APVD: S. XI 15NOV2012	Harrisburg, PA 17105-3608
MATERIAL:		FINISH:		NAME: Ocean Side Feed Applicator		RESTRICTED TO:	
-		-		SIZE: A1		CAGE CODE: 00779	
-		-		DRAWING NO: 2151805		SCALE: 1:2	
-		-		SHEET: 2 OF 4		REV: B1	

PACIFIC VERSION TERMINATOR INTERFACE ADAPTER	PART NUMBER	REVISION	DESCRIPTION	FEED TYPE	APPLICATOR STYLE CONVERSION CHART					
					CONVERT TO	PART NUMBERS REQUIRED				
	2-2151805-2	B	FINE CRIMP HEIGHT ADJUST	PNEUMATIC	-	1338683-8	5-18022-5	-	-	-
					SERVO LATCH PLATE	2119951-1	8-2151805-5	1901094-3	2168400-6 (QUANTITY 2)	
	2-2151805-5	B	FINE CRIMP HEIGHT ADJUST	SERVO LATCH PLATE ⁴	-	1338683-8	5-18022-5	-	-	-
					PNEUMATIC FEED	2119950-1	1338683-8	5-18022-5	2119641-2	2119799-1
2-2151805-7	B	FINE CRIMP HEIGHT ADJUST	NONE	-	-	-	-	-	-	
7-2151805-7	A	CRIMP TOOLING KIT	-	-	-	-	-	-	-	

APPLICATOR DATA		
CRIMP	SIZE	TYPE
WIRE	4.06 mm [.160]	F
INSUL	4.57 mm [.180]	O
APPLICATOR INSTRUCTIONS 408-10389		

TERMINAL DATA: TE TERMINAL		TE CRIMP SPECIFICATION	
TERMINAL NAME: LOCKING TAB REC.8.1			
WIRE STRIP LENGTH		INSULATION DIAMETER RANGE	
5.65-6.65 mm [.222-.262 IN]		∅3.20-4.30 mm [.126-.169 IN]	
TERMINAL APPLICATION SPECIFICATION	114-94254	-	-
TERMINALS APPLIED ¹⁰			
TE TERMINAL	TE TERMINAL	TE TERMINAL	TE TERMINAL
1-962892-1	2-962892-1		

WIRE SIZE	CRIMP HEIGHT mm [INCH]	CRIMP HEIGHT REFERENCE SETTING
6.00mm2	2.58+/-0.05 [.102+/-0.002]	5.1
4.00mm2	2.20+/-0.05 [.087+/-0.002]	9.6



- ¹ RECOMMENDED SPARE PARTS
- ² GREASE BEARING SURFACES LIGHTLY
- 3. LUBRICATE DAILY PER THE APPLICATOR INSTRUCTION SHEET SUPPLIED WITH THE APPLICATOR.
- ⁴ APPLICATOR SPECIFIC DATA TO BE ENTERED INTO BLANK MEMORY CHIP AT ASSEMBLY. SEE BELOW FOR PART NUMBER:
 PNEUMATIC FEED WITH "SMART APPLICATOR" CONVERSION: 8-2151805-4
 SERVO FEED WITH "FINE CRIMP HEIGHT ADJUST": 8-2151805-5
- 5. ADJUSTMENT OF THE STRIPPER MAY BE REQUIRED WHEN MOVING THE APPLICATOR BETWEEN BENCH AND LEADMAKER APPLICATIONS.
- ⁶ APPLY PART NUMBER 1-23419-5 LOCTITE TO THREADS OF ITEMS 50.62.
 APPLY PART NUMBER 2-23419-6 LOCTITE TO THREADS OF ITEMS 242.
- ⁷ GREASE THREADS, GROOVE AND O-RING ON ITEMS 139 & 152.
- ⁸ MAGNET MUST BE ORIENTED CORRECTLY IN ORDER TO PROPERLY ACTUATE THE COUNTER.
- ⁹ CRIMP HEIGHT REFERENCE SETTING WAS THE SETTING USED WHEN THE APPLICATOR WAS QUALIFIED AT THE FACTORY. ADJUSTMENT MAY BE NECESSARY WHEN RUNNING APPLICATOR IN THE FIELD.
- ¹⁰ TERMINAL PITCH NOT COMPATIBLE WITH MECHANICAL FEED.
- ¹¹ TO CONVERT THE APPLICATOR TO A NON-CARRIER CUTTING STYLE, REMOVE ITEM 13 AND ATTACH TO THE LOCATION ON BACK SIDE OF THE HOUSING. REFER TO INSTRUCTION SHEET FOR ADDITIONAL INFORMATION.

***WARNING**
 ON INSTALLATION, SET WIRE DISC, ITEM 40 TO LARGEST WIRE SIZE SETTING. USE OF SETTINGS BELOW MINIMUM REQUIRED CRIMP HEIGHT SETTING WILL CAUSE DAMAGE TO CRIMP TOOLING.

-77	-27	-25	-22	PART NO	DESCRIPTION	ITEM NO
-	1	1	1	2119782-1	FINE ADJUST HEAD ASM, PACIFIC STYLE	251
-	-	-	1	2119640-1	PUSH ROD, AIR FEED	250

PACIFIC VERSION
 Shown on sheets 3 of 4 & 4 of 4
 (Atlantic version shown on sheets 1 of 4 & 2 of 4)

SET UP GAUGE	LOC	DIST	REVISIONS			
2119599-1	A	66	REV	DATE	BY	APPV
-	-	-	1	SEE SHEET 1	-	-

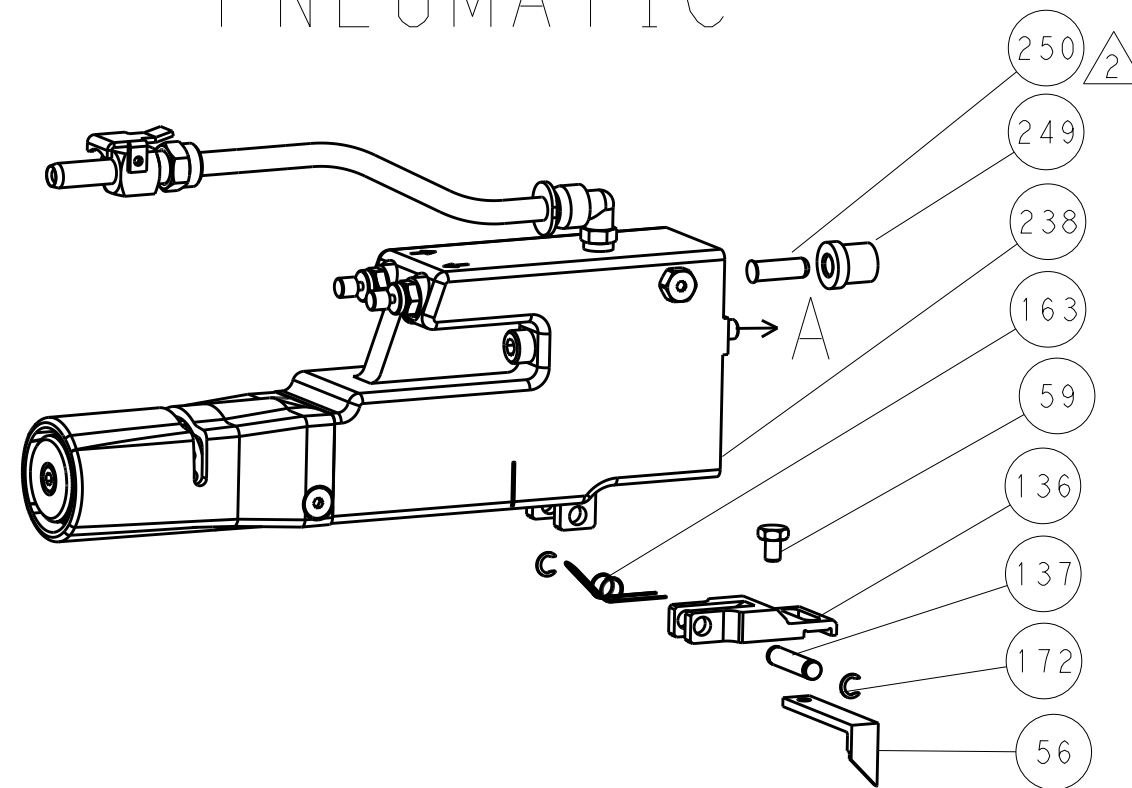
REV	DATE	BY	APPV	DESCRIPTION	DATE	BY	APPV
-	-	-	1	2079988-1	BUSHING, LCH5-12, MISUMI	-	249
-	1	1	1	1-22279-3	SPRING, COMPRESSION	-	246
-	1	1	1	2119082-7	CAM, SNAIL, INSULATION ADJUSTMENT	-	244
-	1	1	1	2079764-1	WASHER, WAVE SPRING, CREST-TO-CREST	-	243
-	1	1	1	2119083-1	RETAINER, INSULATION DIAL	-	242
-	1	1	1	7-18023-7	SCR, SKT HD CAP M3 X 4.0	-	241
-	-	2	-	2168400-6	SHCS, LOW HEAD, RoHS, M5 X 16	-	240
-	-	-	1	2063440-2	AIR FEED MODULE	-	238
-	-	1	-	2119740-2	TAG, IDENTIFICATION	-	213
-	-	1	-	1901094-3	SPACER, FEEDER	-	198
-	1	1	1	993111-1	PIN, SLOTTED SPRING 3.0 X 20.0	-	177
-	1	1	1	8-22280-7	SPRING, COMPRESSION	-	176
-	1	1	1	1752353-2	GUIDE PIN, HOLDDOWN	-	175
-	1	1	1	1901680-2	GUIDE PIN, HOLDDOWN	-	174
-	-	-	2	21045-3	RING, RETAIN, EXTERN, 3/16 CRESCENT	-	172
-	1	1	1	994969-1	MAGNET, RARE EARTH HIGH ENERGY	-	166
-	REF	REF	REF	994970-2	COUNTER, MAGNETIC	-	164
-	-	-	1	240638-1	SPRING, FEED FINGER	-	163
-	1	1	1	8-21084-1	O-RING, .801 ID, .070 DIA. MAT.	-	152
-	-	-	1	2119641-2	FEED CAM, AIR FEED	-	151
-	1	1	1	2119798-2	DETENT PIN	-	145
-	1	1	1	2079383-8	SCR, BHSC, RoHS (M4 X 16)	-	144
-	2	2	2	2168400-5	SHCS, LOW HEAD, RoHS, M4 X 20	-	143
-	1	1	1	1-2119656-0	APPLICATOR BASIC ASSEMBLY, SF	-	141
-	1	1	1	2119650-1	RAM, ASIAN STYLE, SIDE FEED	-	140
-	1	1	1	2119092-2	BOLT, ADJUSTMENT	-	139
-	-	-	1	3-23627-7	PIN, RETAIN, GRVD, 3/16 X .854	-	137
-	-	-	1	2119799-1	HOLDER, FEED FINGER, AF	-	136
-	-	REF	-	SEE NOTE 4	MEMORY CHIP, PROGRAMMED	-	135
-	-	1	-	1633743-1	SERVO FEED LATCH ASM	-	133
-	-	REF	-	2119944-1	FEED FINGER ASSEMBLY, SF	-	117
-	1	1	1	318563-1	GUARD, FRONT CHIP	-	89
-	1	1	1	455888-4	SPACER, CRIMPER	-	82
-	1	1	1	2119956-1	DOCUMENTATION PACKAGE	-	71
-	1	1	1	2119791-9	DEPRESSOR, WIRE	-	70
-	1	-	1	2119740-1	TAG, IDENTIFICATION	-	67
-	2	2	2	2168078-1	SCREW, DRIVE, RH, RoHS, 2 x .188	-	66
-	1	1	1	2119793-1	LIMITER, ADJUSTMENT BOLT	-	63
-	3	3	3	992763-5	SCR, SET, SOC, CONE POINT, M3 X 4.0	-	62
-	-	-	1	5-18022-5	SCR, HEX HD CAP, M4 X 6.0	-	59
-	-	-	1	1338683-8	FEED PAWL	-	56
-	2	2	2	2168400-1	SHCS, LOW HEAD, RoHS, M4 X 12	-	54
-	1	1	1	1-5018030-0	NUT, HEX, REG, RoHS, M3.5	-	52
-	1	1	1	1901681-1	HOLDDOWN, TERMINAL	-	51
-	1	1	1	2-1752354-4	STANDOFF, HOLD-DOWN	-	50
-	-	-	1	18023-9	SCR, SKT HD CAP M4 X 6.0	-	49
-	1	1	1	2079383-7	SCR, BHSC, RoHS (M8 X 25)	-	41
-	1	1	1	2119645-1	DISC, NUMBERED FA WIRE ADJUSTMENT	-	40
-	1	1	1	2119957-1	APPLICATOR SHIM PACK	-	39
-	1	1	1	1-2119644-3	RAM WASHER, PRECISION	-	38
-	1	1	1	1752356-6	SUPPORT, TERMINAL	-	34
-	2	2	2	1-2079383-3	SCR, BHSC, RoHS (M4 X 25)	-	33
-	1	1	1	2161328-1	HEX HEAD, FLANGED, M5 X 8mm LONG	-	32
-	1	1	1	2-1320908-3	SPACER, STRIP GUIDE	-	30
-	1	1	1	2119959-2	ASSEMBLY, STRIP GUIDE	-	29
-	1	1	1	1-455888-0	SPACER, CRIMPER	-	28
-	1	1	1	1320928-6	STRIP GUIDE	-	24
-	1	1	1	2168083-2	SCR, SKT HD CAP, RoHS, M4 X 8.0	-	21
-	1	1	1	1-18028-2	WASHER, FLAT, REG M4	-	20
-	1	1	1	2119533-1	STRIPPER, SIDE FEED	-	19
-	1	1	1	2119806-1	INSERT, SHEAR	-	13
-	1	1	1	3-22280-3	SPRING, COMPRESSION	-	12
-	1	1	1	1-356885-4	STOP, SHEAR	-	11
-	1	1	1	2119805-1	SHEAR HOLDER, FRONT	-	10
-	1	1	1	454276-5	FLOATING SHEAR, FRONT	-	9
-	1	1	1	1-1633928-3	ANVIL, COMBINATION	-	8
-	-	-	-	-	-	-	7
-	-	-	-	-	-	-	6
-	1	1	1	1-2119757-2	DEPRESSOR, SHEAR	-	5
-	1	1	1	4-238011-4	BLOCK, CRIMPER SPACER	-	4
-	1	1	1	7-2119784-6	CRIMPER, INSULATION O PREMIUM	-	3
-	-	-	-	-	-	-	2
-	1	1	1	3-1752057-6	CRIMPER, WIRE PREMIUM, STEPPED	-	1

DIMENSIONS: mm		TOLERANCES UNLESS OTHERWISE SPECIFIED:		DWN: C. CHEN 15NOV2012		CHK: S. XI 15NOV2012		APVD: J. CRUZ 15NOV2012		NAME: Ocean Side Feed Applicator	
0 PLC ±.5		1 PLC ±0.5		2 PLC ±0.13		3 PLC ±0.013		4 PLC ±0.001		SIZE: A1	
MATERIAL: -		FINISH: -		WEIGHT: -		SCALE: 1:2		SHEET: 3 OF 4		REV: B1	

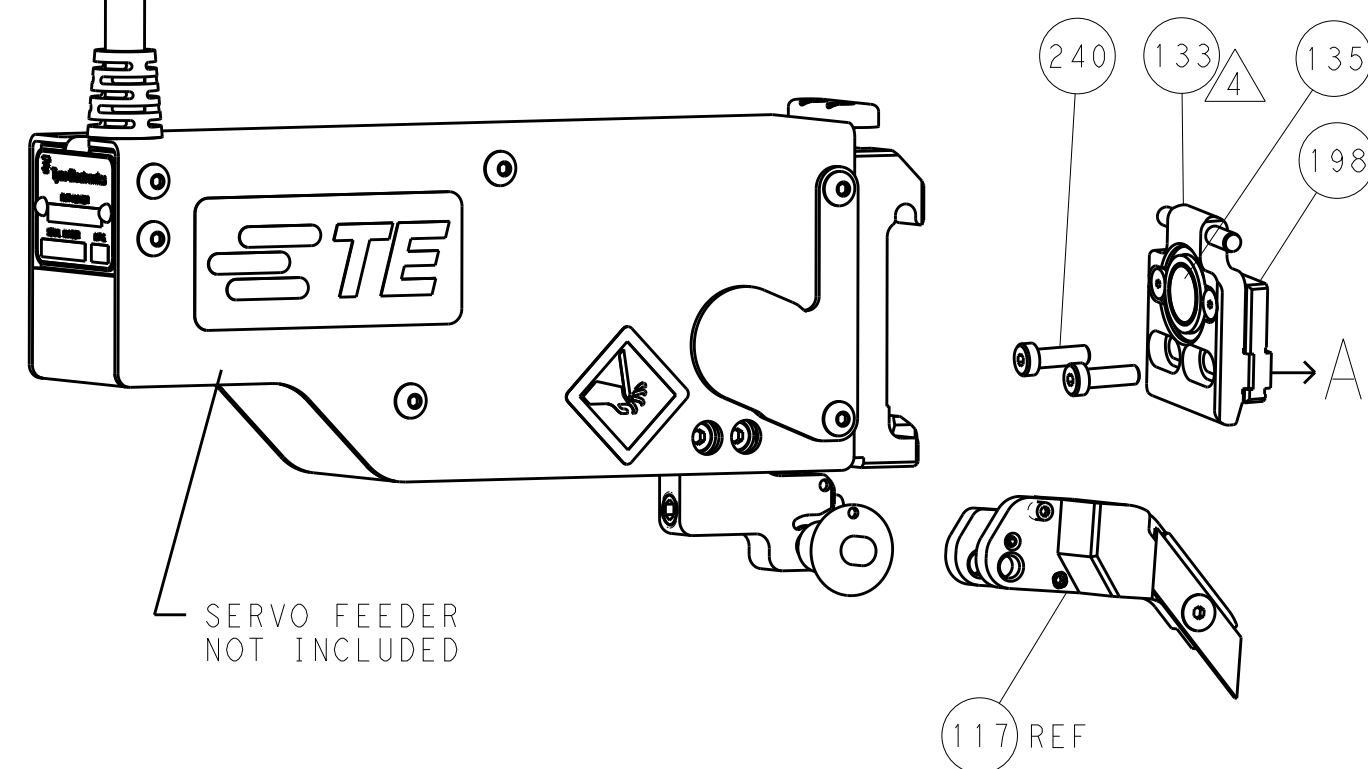
LOC		DIST		REVISIONS			
A	66	P	LTM	DESCRIPTION	DATE	DWN	APVD
		-	-	SEE SHEET 1	-	-	-

FEED TYPE

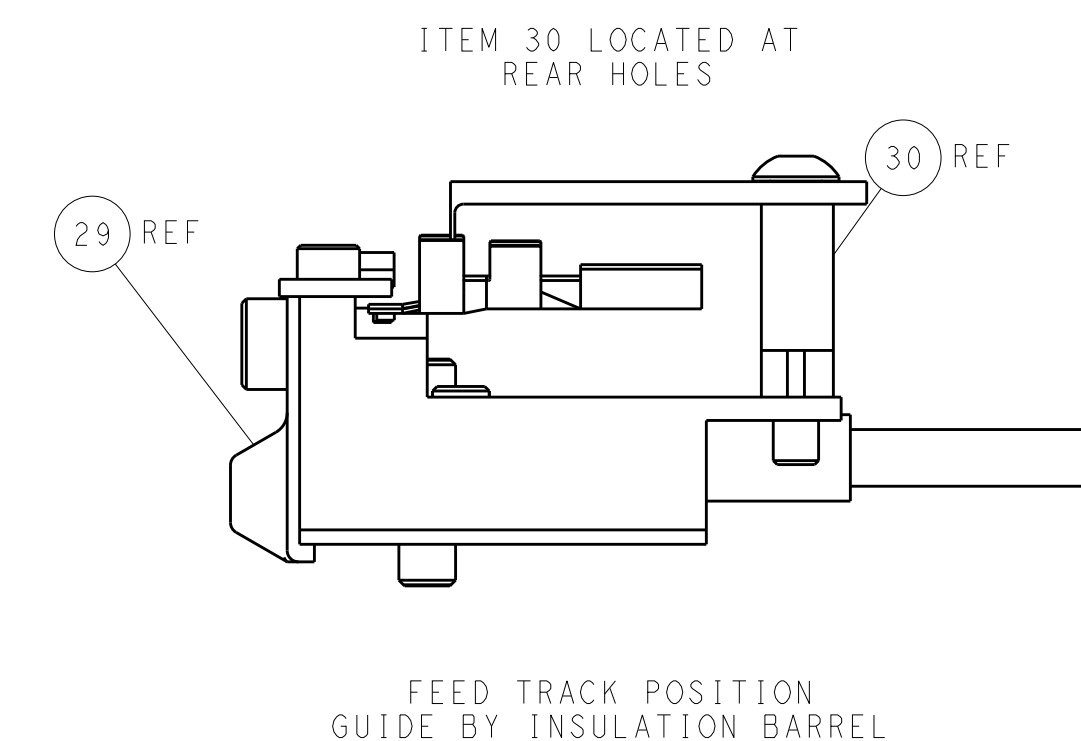
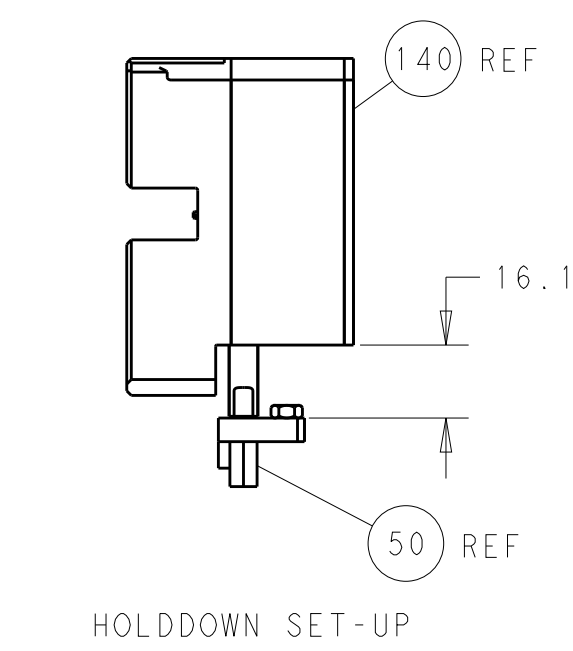
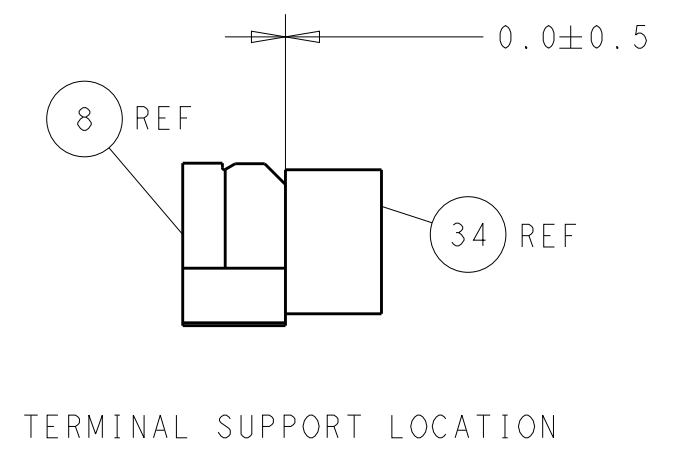
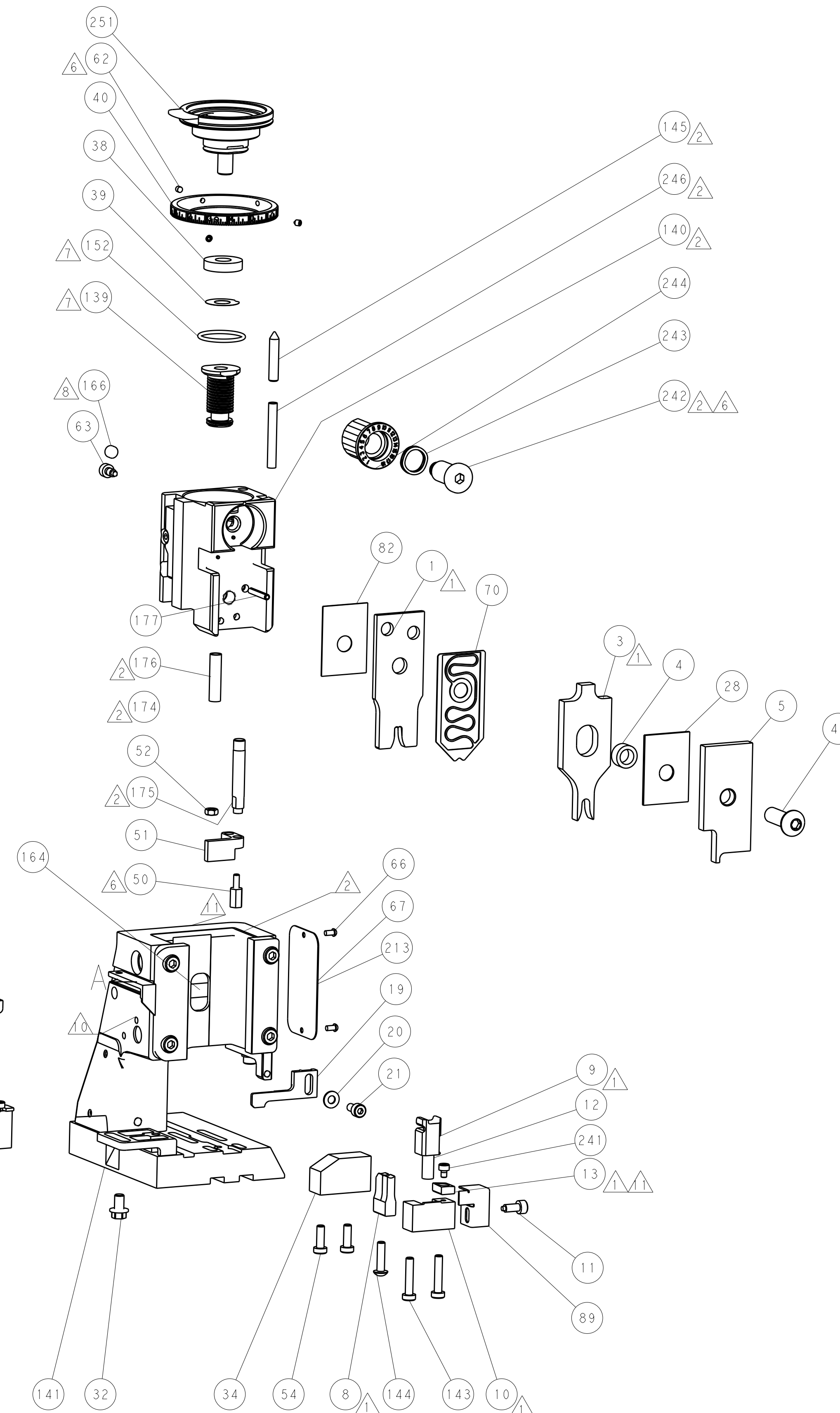
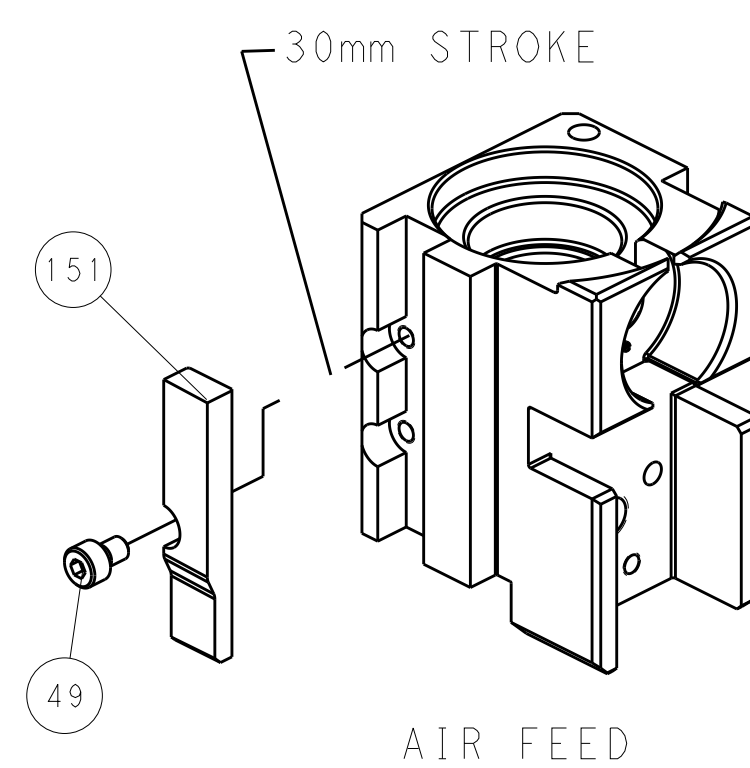
PNEUMATIC



SERVO LATCH PLATE



CAM POSITION



PACIFIC VERSION
 Shown on sheets 3 of 4 & 4 of 4
 (Atlantic version shown on sheets 1 of 4 & 2 of 4)

<small>THIS DRAWING IS UNPUBLISHED. RELEASED FOR PUBLICATION. IT IS THE PROPERTY OF TYCO ELECTRONICS CORPORATION. IT IS TO BE USED ONLY FOR THE CONTROL AND INSTALLATION OF THE EQUIPMENT FOR WHICH IT WAS DESIGNED. NO PARTS OR INFORMATION HEREON ARE TO BE REPRODUCED OR TRANSMITTED IN ANY FORM OR BY ANY MEANS, ELECTRONIC OR MECHANICAL, INCLUDING PHOTOCOPYING, RECORDING, OR BY ANY INFORMATION STORAGE AND RETRIEVAL SYSTEM, WITHOUT THE WRITTEN PERMISSION OF TYCO ELECTRONICS CORPORATION.</small>		DWN: C. CHEN 15NOV2012 CHK: S. XI 15NOV2012 APVD: J. CRUZ 15NOV2012	TE Connectivity Harrisburg, PA 17105-3608
DIMENSIONS: mm TOLERANCES UNLESS OTHERWISE SPECIFIED: 0 PLC ±0.5 1 PLC ±0.5 2 PLC ±0.13 3 PLC ±0.013 4 PLC ±0.001 ANGLES ±0.0001		NAME: Ocean Side Feed Applicator PRODUCT SPEC: APPLICATION SPEC: WEIGHT: SCALE: 1:2	SIZE: A1 CAGE CODE: 00779 DRAWING NO: 2151805 SHEET 4 OF 4 REV B1
MATERIAL: FINISH:		RESTRICTED TO:	CUSTOMER ACCESSIBLE PRODUCTION DRAWING