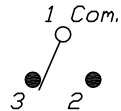
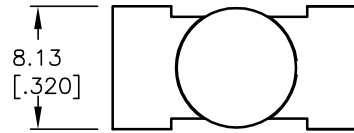


RECOMMENDED PCB LAYOUT
SCALE 2X



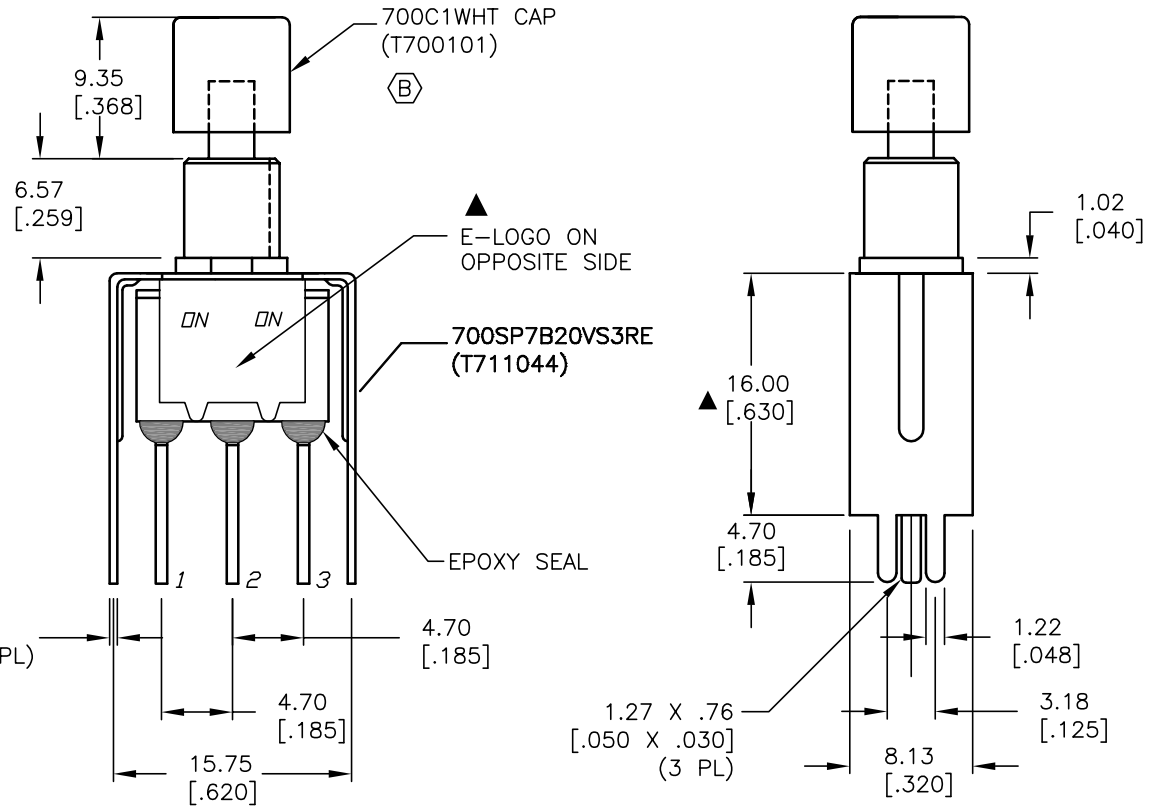
CIRCUIT: SPDT

SWITCH FUNCTION	
DN	<DN>
1-3	1-2

(< >) = MOMENTARY

NOTES:

- ALL DIMENSIONS IN MM [INCH]
- GENERAL TOLERANCE: X.X=±0.4
X.XX=±0.25
- TERM. NOS. FOR REF. ONLY
- RATING: 0.4VA MAX. @20V MAX AC OR DC
- FIXED TERM. & MOVING CONTACT:
Copper Alloy w/Gold plate over nickle plate
- CONTACT RESISTANCE: 20mILLI-ohms initial
@2-4VDC
- ELECTRICAL LIFE: 50,000 make-and-break
cycles at full load.
- INSULATION RESISTANCE: 1,000M ohm min.
- DIELECTRIC STRENGTH: 1000V RMS @sea level
- OPERATING TEMP.: -30°C to 85°C
- ▲ DENOTES CRITICAL PARAMETER.



E-SWITCH®

TITLE		700SP7B20VS3REC1WHT			
SCALE	DATE	DR	DWG	REV	
2:1	6/16/03	AR	XT0114P	B	

B	13491	CORRECT CAP PART NUMBER	9/29/03	AR
A	13218	RELEASED FOR PRODUCTION	6/16/03	AR
REV.	ECN No.	DESCRIPTION	DATE	CHKD

THE INFORMATION CONTAINED IN THIS DOCUMENT IS PROPRIETARY TO E-SWITCH AND IS NOT TO BE COPIED OR TRANSFERRED