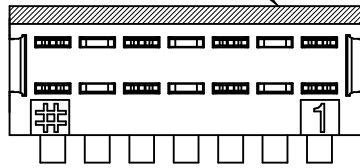
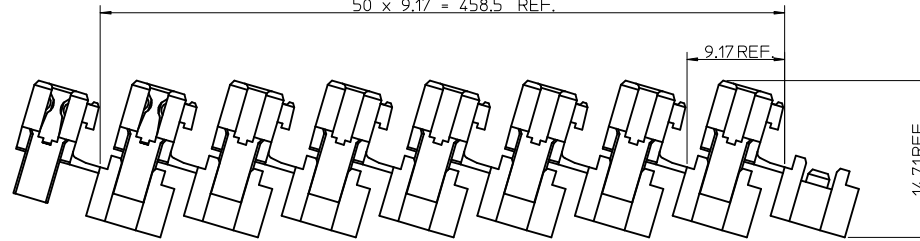


POSITION OF
COLOUR STRIPE

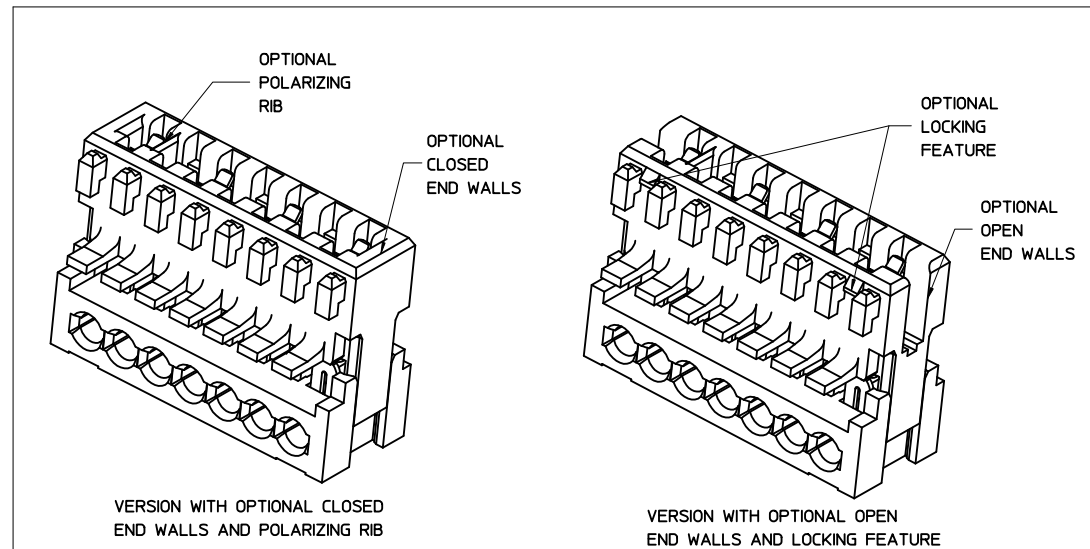
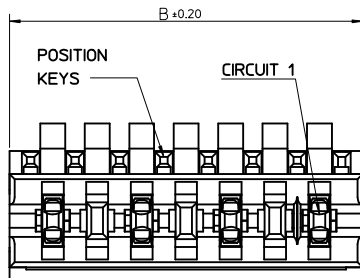
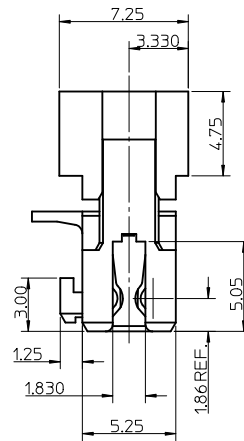
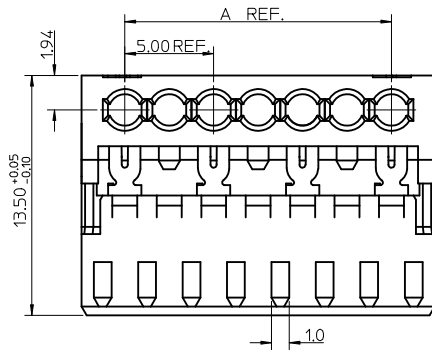


50 x 9.17 = 458.5 REF.



CCT	*A*	*B*
2	5.0	9.875
3	10.0	14.875
4	15.0	19.875
5	20.0	24.875
6	25.0	29.875
7	30.0	34.875
8	35.0	39.875
9	40.0	44.875
10	45.0	49.875

SHIPPING ARRANGEMENT
SCALE 3:1



SEE SUBSEQUENT SHEETS FOR RELEVANT PART NUMBERS.

NOTES:

- REFER TO PRODUCT SPECIFICATION: PS-99020-0040.
- MATERIAL: HOUSING - POLYESTER (PBT) 10% GLASS FILLED, UL94-V0, COLOUR: NATURAL (BEIGE).
TERMINAL: PHOSPHOR BRONZE 0.30 REF. THICK - PLATING HOT TIN DIP.
- REFER TO APPLICATION SPEC (AS-99033-0008)
- REFER TO PACKAGING SPEC (PK-90871-001)

ADDED NEW P/N'S EC NO: E2010-0367 2010/04/28 DRWN:BMAGUIRE 1999/05/04 CHKD:PWHLTE 1999/05/04 APPR:BMAGUIRE 2010/05/28	QUALITY SYMBOLS ▽=0 ▽=0	GENERAL TOLERANCES (UNLESS SPECIFIED) <table border="1"> <thead> <tr> <th></th> <th>mm</th> <th>INCH</th> </tr> </thead> <tbody> <tr> <td>4 PLACES</td> <td>± ---</td> <td>± ---</td> </tr> <tr> <td>3 PLACES</td> <td>± 0.05</td> <td>± ---</td> </tr> <tr> <td>2 PLACES</td> <td>± 0.10</td> <td>± ---</td> </tr> <tr> <td>1 PLACE</td> <td>± 0.2</td> <td>± ---</td> </tr> <tr> <td colspan="3">ANGULAR ± 1/2°</td> </tr> </tbody> </table>		mm	INCH	4 PLACES	± ---	± ---	3 PLACES	± 0.05	± ---	2 PLACES	± 0.10	± ---	1 PLACE	± 0.2	± ---	ANGULAR ± 1/2°			DIMENSION STYLE MM ONLY	SCALE 5:1	DESIGN UNITS METRIC	THIRD ANGLE PROJECTION
		mm	INCH																					
	4 PLACES	± ---	± ---																					
	3 PLACES	± 0.05	± ---																					
2 PLACES	± 0.10	± ---																						
1 PLACE	± 0.2	± ---																						
ANGULAR ± 1/2°																								
DRAWN BY LK IERNAN 1999/04/20 CHECKED BY PWHLTE 1999/05/04 APPROVED BY MWHLITE 1999/05/04	DATE 1999/04/20 DATE 1999/05/04 DATE 1999/05/04	TITLE APPLI-MATE 2.5 FEMALE 5MM TERMINAL PITCH																						
MATERIAL NO. SEE SHEET 2&3	DOCUMENT NO. SD-90872-001	MOLEX INCORPORATED																						
DRAFT WHERE APPLICABLE MUST REMAIN WITHIN DIMENSIONS	SIZE A2	THIS DRAWING CONTAINS INFORMATION THAT IS PROPRIETARY TO MOLEX INCORPORATED AND SHOULD NOT BE USED WITHOUT WRITTEN PERMISSION																						

2 CIRCUIT

MOLEX PART NO.	REMOVED POSITION KEYS	CONFIGURATION (SEE NOTE 1)	REF.	END WALLS	POLARIZING RIB	LOCKING DEVICE	CONTACT PITCH	CABLE TYPE (SEE NOTE 2)	COLOUR STRIPE
90872-0002	NONE		K00	OPEN	NO	NO	5.0	A	NATURAL
90872-0003	a		K30	OPEN	NO	NO	5.0	A	NATURAL
90872-0004	b		K31	OPEN	NO	NO	5.0	A	NATURAL
90872-0005	c		K32	OPEN	NO	NO	5.0	A	NATURAL
90872-0006	d		K33	OPEN	NO	NO	5.0	A	NATURAL
90872-0007	b d		K34	OPEN	NO	NO	5.0	A	NATURAL
90872-0008	a c		K35	OPEN	NO	NO	5.0	A	NATURAL
90872-0009	a d		K36	OPEN	NO	NO	5.0	A	NATURAL
90872-0010	a b		K37	OPEN	NO	NO	5.0	A	NATURAL
90872-0011	b c		K38	OPEN	NO	NO	5.0	A	NATURAL
90872-0012	c d		K39	OPEN	NO	NO	5.0	A	NATURAL
90872-0501	NONE		-	CLOSED	BETWEEN HSG CKT 1 & CKT 2	NO	5.0	A	NATURAL
90872-0014	b c d		K40	OPEN	NO	NO	5.0	A	NATURAL
90872-0351	d		K00	OPEN	NO	NO	5.0	B	GREEN
90872-0013	b c		K38	OPEN	NO	NO	5.0	A	RED
90872-0015	b c d		K40	OPEN	NO	NO	5.0	A	BLUE
90872-0016	c d		K39	OPEN	NO	NO	5.0	A	BLUE
90872-0017	NONE		-	OPEN	BETWEEN HSG CKT 2 & CKT 3	NO	5.0	A	NATURAL
90872-0018	NONE		-	OPEN	BETWEEN HSG CKT 1 & CKT 2	NO	5.0	A	NATURAL
90872-0354	d		K30	OPEN	NO	NO	5.0	B	NATURAL
90872-0019	a		K30	OPEN	NO	NO	5.0	A	RED
90872-0020	d		K33	OPEN	NO	NO	5.0	A	BLUE
90872-0352	a b		K37	OPEN	NO	NO	5.0	B	NATURAL
90872-0021	NONE		K00	OPEN	NO	NO	5.0	A	RED
90872-0022	c d		K39	OPEN	NO	NO	5.0	A	RED
90872-0023	c		-	1ST OPEN LAST CLOSED	NO	NO	5.0	A	NATURAL

2 CIRCUIT

MOLEX PART NO.	REMOVED POSITION KEYS	CONFIGURATION (SEE NOTE 1)	REF.	END WALLS	POLARIZING RIB	LOCKING DEVICE	CONTACT PITCH	CABLE TYPE (SEE NOTE 2)	COLOUR STRIPE
90872-0024	a b d		-	OPEN	NO	NO	5.0	A	NATURAL
90872-0025	b d		-	OPEN	NO	NO	5.0	A	GREEN

3 CIRCUIT

MOLEX PART NO.	REMOVED POSITION KEYS	CONFIGURATION (SEE NOTE 1)	REF.	END WALLS	POLARIZING RIB	LOCKING DEVICE	CONTACT PITCH	CABLE TYPE (SEE NOTE 2)	COLOUR STRIPE
90872-1001	NONE		K00	OPEN	NO	NO	5.0	A	NATURAL
90872-1002	b		K35	OPEN	NO	NO	5.0	A	NATURAL
90872-1003	c		K36	OPEN	NO	NO	5.0	A	NATURAL
90872-1004	c d e		K40	OPEN	NO	NO	5.0	A	NATURAL
90872-1005	NONE		-	OPEN	BETWEEN HSG CKT 4 & CKT 5	NO	5.0	A	NATURAL
90872-1007	NONE		-	OPEN	BETWEEN HSG CKT 1 & CKT 2	NO	5.0	A	NATURAL
90872-1008	b c e		K00	OPEN	NO	NO	5.0	A	NATURAL
90872-1009	d e		K58	OPEN	NO	NO	5.0	A	NATURAL
90872-1501	NONE		-	CLOSED	BETWEEN HSG CKT 4 & CKT 5	NO	5.0	A	NATURAL
90872-1010	a d e f		-	OPEN	NONE	NONE	5.0	A	NATURAL
90872-1011	e f		-	OPEN	NONE	NONE	5.0	A	NATURAL

NOTES

- + DENOTES TERMINAL VOIDED POSITION
 - ⊙ DENOTES TERMINAL LOADED POSITION
 - | DENOTES POLARIZING POSITION
- A- APPLICABLE CABLE: 0.22 - 0.38 sqmm (12 CONDUCTORS)
 - B- APPLICABLE CABLE: 0.22 sqmm (7 CONDUCTORS)
0.34 sqmm (7 CONDUCTORS)

SEE SHEET 1 IEC NO: E2010-0367 DRAWN BY: BDR/MAGUIRE CHKD BY: PWHITE APPR: BDR/MAGUIRE DATE: 2010/04/28 DATE: 1999/05/04 DATE: 2010/05/28	QUALITY SYMBOLS ▽=0 ▽=0	GENERAL TOLERANCES (UNLESS SPECIFIED) mm INCH 4 PLACES ± --- ± --- 3 PLACES ± 0.05 ± --- 2 PLACES ± 0.10 ± --- 1 PLACE ± 0.2 ± --- ANGULAR ± 1/2°	DIMENSION STYLE MM ONLY	SCALE 1:1	DESIGN UNITS METRIC	THIRD ANGLE PROJECTION	
	DRAWN BY: LK IERNAN CHECKED BY: PWHITE APPROVED BY: MWILHITE DATE: 1999/04/20 DATE: 1999/05/04 DATE: 1999/05/04	TITLE APPLI-MATE 2.5 FEMALE 5MM TERMINAL PITCH	MATERIAL NO. SEE CHARTS	DOCUMENT NO. SD-90872-001	SHEET NO. 2 OF 3	MOLEX INCORPORATED	
	DRAFT WHERE APPLICABLE MUST REMAIN WITHIN DIMENSIONS						THIS DRAWING CONTAINS INFORMATION THAT IS PROPRIETARY TO MOLEX INCORPORATED AND SHOULD NOT BE USED WITHOUT WRITTEN PERMISSION
	SEE CHARTS						MOLEX INCORPORATED

4 CIRCUIT

MOLEX PART NO.	REMOVED POSITION KEYS	CONFIGURATION (SEE NOTE 1)	REF.	END WALLS	POLARIZING RIB	LOCKING DEVICE	CONTACT PITCH	CABLE TYPE (SEE NOTE 2)	COLOUR STRIPE
90872-2001	NONE		K00	OPEN	NO	NO	5.0	A	NATURAL
90872-2002	a		K30	OPEN	NO	NO	5.0	A	NATURAL
90872-2003	b		K31	OPEN	NO	NO	5.0	A	NATURAL
90872-2004	d f		K37	OPEN	NO	NO	5.0	A	NATURAL
90872-2005	a e g		K43	OPEN	NO	NO	5.0	A	RED
90872-2006	c e		K49	OPEN	NO	NO	5.0	A	NATURAL
90872-2007	b c d f		-	OPEN	NO	NO	5.0	A	NATURAL
90872-2008	d e f g		-	OPEN	NO	NO	5.0	A	NATURAL
90872-2009	a b e f h		-	OPEN	NO	NO	5.0	A	NATURAL
90872-2010	a c e g		-	OPEN	NONE	NONE	5.0	A	NATURAL
90872-2011	a b d f g h		-	OPEN	NONE	NONE	5.0	A	NATURAL

5 CIRCUIT

MOLEX PART NO.	REMOVED POSITION KEYS	CONFIGURATION (SEE NOTE 1)	REF.	END WALLS	POLARIZING RIB	LOCKING DEVICE	CONTACT PITCH	CABLE TYPE (SEE NOTE 2)	COLOUR STRIPE
90872-3001	NONE		K00	OPEN	NO	NO	5.0	A	NATURAL
90872-3002	a c		K69	OPEN	NONE	NONE	5.0	A	NATURAL

6 CIRCUIT

MOLEX PART NO.	REMOVED POSITION KEYS	CONFIGURATION (SEE NOTE 1)	REF.	END WALLS	POLARIZING RIB	LOCKING DEVICE	CONTACT PITCH	CABLE TYPE (SEE NOTE 2)	COLOUR STRIPE
90872-4001	NONE		K00	OPEN	NO	NO	5.0	A	NATURAL

NOTES

- + DENOTES TERMINAL VOIDED POSITION
 - ⊕ DENOTES TERMINAL LOADED POSITION
 - ! DENOTES POLARIZING RIB POSITION
- A - APPLICABLE CABLE: 0.22 - 0.38 sqmm (12 CONDUCTORS)
 - B - APPLICABLE CABLE: 0.22 sqmm (7 CONDUCTORS)
 - 0.34 sqmm (7 CONDUCTORS)

7 CIRCUIT

MOLEX PART NO.	REMOVED POSITION KEYS	CONFIGURATION (SEE NOTE 1)	REF.	END WALLS	POLARIZING RIB	LOCKING DEVICE	CONTACT PITCH	CABLE TYPE (SEE NOTE 2)	COLOUR STRIPE
90872-5001	a c e g i k m		K03	OPEN	NO	NO	5.0	A	NATURAL
90872-5002	c d g h i j k		-	OPEN	NO	NO	5.0	A	NATURAL

8 CIRCUIT

MOLEX PART NO.	REMOVED POSITION KEYS	CONFIGURATION (SEE NOTE 1)	REF.	END WALLS	POLARIZING RIB	LOCKING DEVICE	CONTACT PITCH	CABLE TYPE (SEE NOTE 2)	COLOUR STRIPE
90872-6001	NONE		K00	OPEN	NO	NO	5.0	A	NATURAL

SEE SHEET 1 IEC NO: E2010-0367 DRAWN BY: B.MAGUIRE CHECKED BY: P.WHYTE APPR: B.MAGUIRE DATE: 2010/04/28 DATE: 1999/05/04 DATE: 2010/05/28	QUALITY SYMBOLS	GENERAL TOLERANCES (UNLESS SPECIFIED)	DIMENSION STYLE	SCALE	DESIGN UNITS	THIRD ANGLE PROJECTION
	$\nabla=0$ $\nabla=0$	mm INCH 4 PLACES ± --- ± --- 3 PLACES ± 0.05 ± --- 2 PLACES ± 0.10 ± --- 1 PLACE ± 0.2 ± --- ANGULAR ± 1/2°	MM ONLY DRAWN BY DATE LK IERNAN 1999/04/20 CHECKED BY DATE P.WHYTE 1999/05/04 APPROVED BY DATE MWLWHITE 1999/05/04	1:1	METRIC	TITLE APPLI-MATE 2.5 FEMALE 5MM TERMINAL PITCH
	DRAFT WHERE APPLICABLE MUST REMAIN WITHIN DIMENSIONS	SEE CHARTS MATERIAL NO. SD-90872-001	MOLEX INCORPORATED DOCUMENT NO. SD-90872-001	SHEET NO. 3 OF 3	THIS DRAWING CONTAINS INFORMATION THAT IS PROPRIETARY TO MOLEX INCORPORATED AND SHOULD NOT BE USED WITHOUT WRITTEN PERMISSION	