

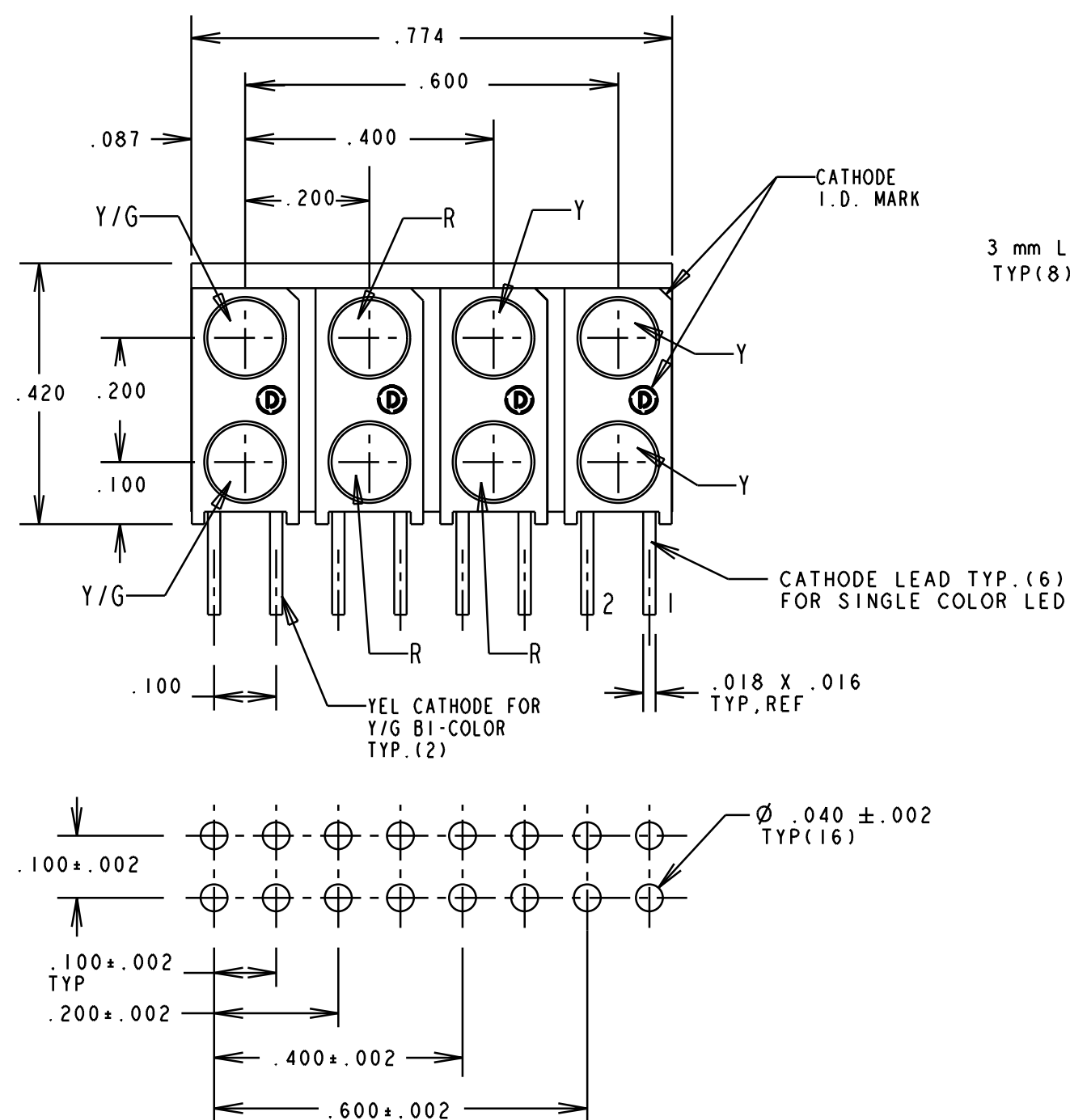
| LED = YELLOW/GREEN BI-COLOR               |                 |            |            |     |         |                              |
|---|-----------------|------------|------------|-----|---------|------------------------------|
| OPERATING CHARACTERISTICS AT 25°C AMBIENT |                 |            |            |     |         |                              |
| CHARACTERISTICS                           | LED COLOR       | MIN        | TYP        | MAX | UNITS   | TEST CONDITIONS              |
| LUMINOUS INTENSITY                        | YELLOW<br>GREEN | 2.5<br>2.5 | 4.3<br>6.3 |     | mcd     | $I_f = 10 \text{ mA}$        |
| FORWARD VOLTAGE                           | YELLOW<br>GREEN |            | 2.1<br>2.8 |     | V       | $I_f = 20 \text{ mA}$        |
| PEAK WAVELENGTH                           | YELLOW<br>GREEN |            | 585<br>565 |     | nm      |                              |
| VIEWING ANGLE                             | YELLOW<br>GREEN |            | 80         |     | Degrees |                              |
| CAPACITANCE                               | YELLOW<br>GREEN |            | 15<br>35   |     | pf      | $V_f = 0, f = 1 \text{ MHz}$ |

| ABSOLUTE MAXIMUM RATING AT 25°C AMBIENT                    |            |       |       |
|--|------------|-------|-------|
|  | YELLOW     | GREEN | UNITS |
| POWER DISSIPATION  | 60         | 100   | mW    |
| CONTINUOUS FORWARD CURRENT                                 | 20         | 30    | mA    |
| DERATE LINEARLY FROM 50°C                                  | 0.25       | 0.4   | mA/°C |
| PEAK FORWARD CURRENT (1/10 DUTY CYCLE, 0.1 ms PULSE WIDTH) | 80         | 120   | mA    |
| LEAD SOLDERING TEMPERATURE, 5 SEC., 1/16" FROM BODY        | 260        |       | °C    |
| OPERATING TEMPERATURE                                      | -55 TO 100 |       | °C    |
| STORAGE TEMPERATURE  | -55 TO 100 |       | °C    |

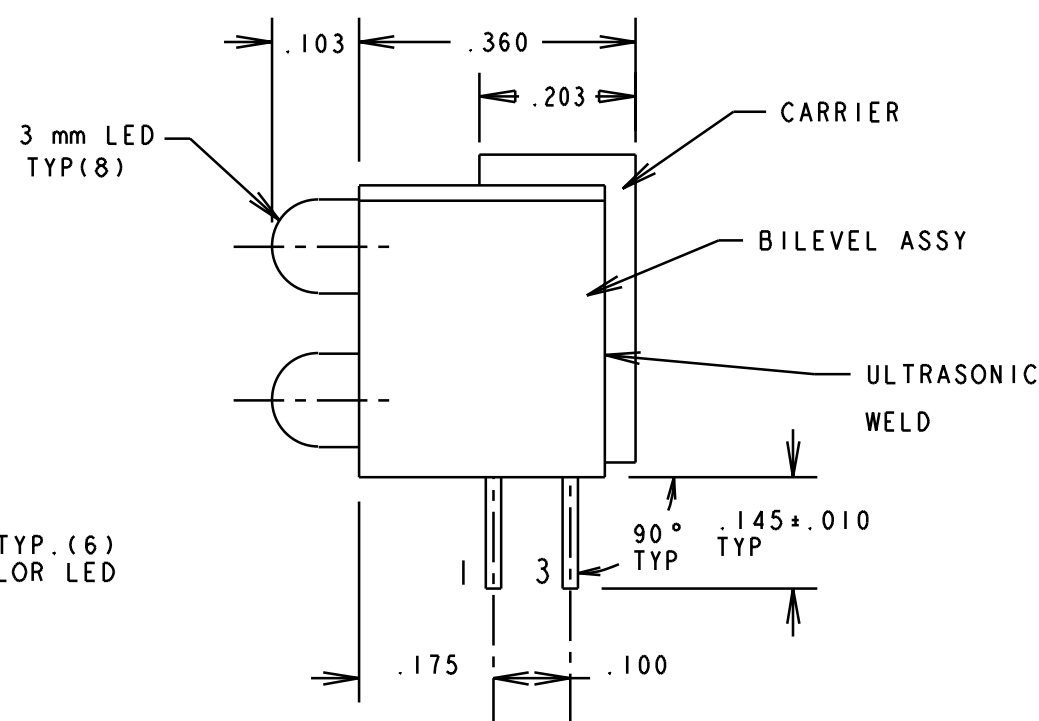
| REV. | ECN NO. | REVISIONS   | DRN. | CKD. | APP. | DATE |
|------|---------|-------------|------|------|------|------|
| A    |         | NEW RELEASE | DC   |      |      |      |

| OPERATING CHARACTERISTICS AT 25°C AMBIENT |           |     |      |     |        |                              |
|---|-----------|-----|------|-----|--------|------------------------------|
| CHARACTERISTICS                           | LED COLOR | MIN | TYP  | MAX | UNITS  | TEST CONDITIONS              |
| LUMINOUS INTENSITY                        | RED       | 7.4 | 10.0 |     | mcd    | $I_f = 10 \text{ mA}$        |
|   | YELLOW    | 7.4 | 10.0 |     |        |                              |
| FORWARD VOLTAGE                           | RED       |     | 2.0  | 2.8 | V      | $I_f = 20 \text{ mA}$        |
|   | YELLOW    |     | 2.1  | 2.8 |        |                              |
| REVERSE CURRENT                           | ALL       |     |      | 100 | µA     | $V_a = 5 \text{ V}$          |
| PEAK WAVELENGTH                           | RED       |     | 635  |     | nm     |                              |
|   | YELLOW    |     | 585  |     |        |                              |
| VIEWING ANGLE                             | ALL       |     | 60   |     | Degree |                              |
| CAPACITANCE                               | RED       |     | 20   |     | pf     | $V_f = 0, f = 1 \text{ MHz}$ |
|   | YELLOW    |     | 15   |     |        |                              |

| ABSOLUTE MAXIMUM RATING AT 25°C AMBIENT                    |            |        |       |
|--|------------|--------|-------|
|  | RED        | YELLOW | UNITS |
| POWER DISSIPATION  | 100        | 60     | mW    |
| CONTINUOUS FORWARD CURRENT                                 | 30         | 100    | mA    |
| DERATE LINEARLY FROM 50°C                                  | 0.4        | 0.25   | mA/°C |
| PEAK FORWARD CURRENT (1/10 DUTY CYCLE, 0.1 ms PULSE WIDTH) | 120        | 80     | mA    |
| LEAD SOLDERING TEMPERATURE, 5 SEC., 1/16" FROM BODY        | 260        |        | °C    |
| OPERATING TEMPERATURE                                      | -55 TO 100 |        | °C    |
| STORAGE TEMPERATURE  | -55 TO 100 |        | °C    |

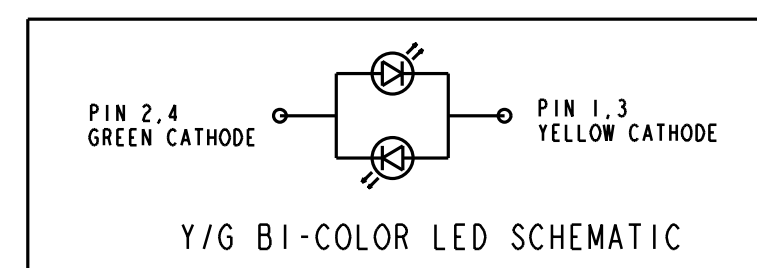
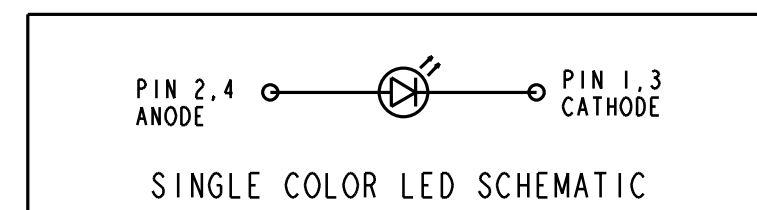


RECOMMENDED P.C. BOARD HOLE PATTERN



NOTES:

- LEADS TO FIT INTO .040 DIA. HOLES SPACED AS PER PATTERN.
- PIN NUMBERS FOR REFERENCE ONLY. DESIGNATION NON-EXISTENT ON PARTS.
- LED LEAD DIMENSIONS SHOWN ARE MEASURED AT HOUSING EXIT.
- PACKAGE PARTS IN TUBE WITH TWO END PLUGS. (29 PCS. PER TUBE) MARK LABEL WITH MFG., P/N, DATE CODE, QTY/TUBE.
- DIALIGHT PART NO. 553-0008-835.



|   |                          |                       |
|---|--------------------------|-----------------------|
| THIS DRAWING AND THE CONTENTS HEREIN ARE CONFIDENTIAL AND THE SOLE PROPERTY OF DIALIGHT. REPRODUCTION OF THIS DRAWING OR CONSTRUCTION OF ANY PARTS WITHIN THIS DRAWING ARE FORBIDDEN WITHOUT THE WRITTEN CONSENT OF DIALIGHT. |                          |                       |
| SCALE 4:1   | DRAWING NUMBER           | REV                   |
| ALL DIM'S IN: INCHES  | C-16816                  | A                     |
| TOLERANCES: UNLESS OTHERWISE SPECIFIED  | TITLE                    |                       |
| FRACTIONS (.XX): ±.020  | 3mm LED CBI GANGED ARRAY |                       |
| DECIMALS (.XXX): ±.015  | MATERIAL                 |                       |
| ANGLES: ±3°   | Dialight                 |                       |
| FINISH:   | 1501 ROUTE 34 SOUTH      | FARMINGDALE, NJ 07727 |
| FSCM 83330  | SHEET OF                 | FAMILY TABLES:        |