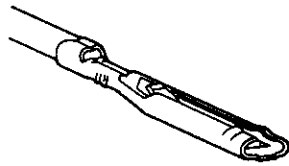


Crimp, Snap-in Receptacle Contacts



Materials:

Contact — Phosphor bronze

Finish — Selective gold plating in contact mating area over .000030 [0.00076] nickel, see table for gold thicknesses

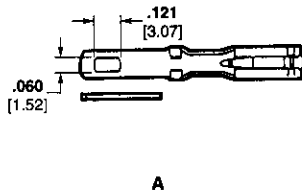
AMP-BLADE Connector Snap-in Receptacle Contacts

Wire (Insulation) Ranges	Gold Plate Thickness	Side Feed Contact Part Number	
		Strip Form	Loose Piece*
24-20 AWG 0.2-0.5 mm ² (.040-.080) (1.02-2.03)	.000030 0.00076	531586-3	531586-6
	.000050 0.00127	531586-4	—
28-24 AWG 0.09-0.2 mm ² (.030-.060) (0.76-1.52)	.000030 0.00076	531587-3	531587-6
1: 18 AWG 0.8-0.9 mm ² or 2: 20 or 22 AWG 0.3-0.6 mm ² (.067-.090) (1.70-2.28)	.000015 0.00038	—	—
	.000030 0.00076	531589-3	531589-6

*See page 6120 for crimping tool.

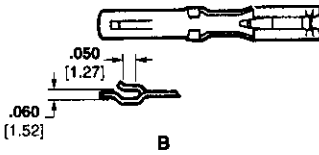
Wire Range AWG	Insulation mm ²	Insulation Range	Commercial Type		Military Type		
			End Feed Strip Part No.	Loose Piece Part No.	Military Part No.	End Feed Strip Part No.	Loose Piece Part No.
			.000030 [0.00076] Gold Over .000030 [0.00076] Nickel		.000050 [0.00127] Gold Over .000030 [0.00076] Nickel		
24-20	0.2-0.6	.040-.080 1.02-2.03	66005-2	66010-2	21097/16-03	66005-3	66010-3
28-24	0.08-0.2	.030-.060 0.76-1.52	—	66011-2	21097/16-01	66009-3	66011-3
(2)20 or (2)22	0.183 or 0.643	(2).045 to (2)1.14 (2).072 to (2)1.83	66021-2	66026-2	21097/16-04	66021-3	66026-3
18	0.8	.067-.090 1.70-2.29	66021-2	66026-2	21097/16-04	66021-3	66026-3
28-24	0.08-0.2	.078 1.98	66027-2	—	21097/16-02	66027-3	—

Solder—Tab Receptacle Contacts



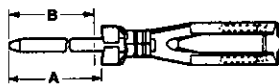
Materials:

Contact — Phosphor bronze



Type	Maximum Extension Beyond Back Face of Block	Part Numbers—Loose Piece
		Commercial Type Gold Plate Thickness .000030 [0.00076] over .000030 [0.00076] Nickel
A	.390 9.91	66086-2
B	.375 9.52	66086-4

Post-Type Receptacle Contacts



Materials:

Contact — Phosphor bronze

Finish — Selective gold plating in contact mating area over .000030 [0.00076] nickel, (see table for gold thicknesses); posts, tin plated

Dimensions A	Dimensions B*	Gold Plate Thickness	Part Numbers - Loose Piece	
			.031 x .062 [0.79 x .157] Posts	.045 x .045 [1.14 x 1.14] Posts
.410 10.41	.370 9.40	.000015 0.00038	582652-1	—
		.000030 0.00076	1-582261-1	1-582364-1
.640 16.26	.600 15.24	.000015 0.00038	582652-2	—
		.000030 0.00076	1-582261-2	1-582364-2
.810 20.57	.770 19.56	.000015 0.00038	582652-3	—
		.000030 0.00076	1-582261-3	1-582364-3
1.040 26.42	1.000 25.4	.000015 0.00038	582652-4	—
		.000030 0.00076	1-582261-4	1-582364-4

*Post length after inserted into housing.

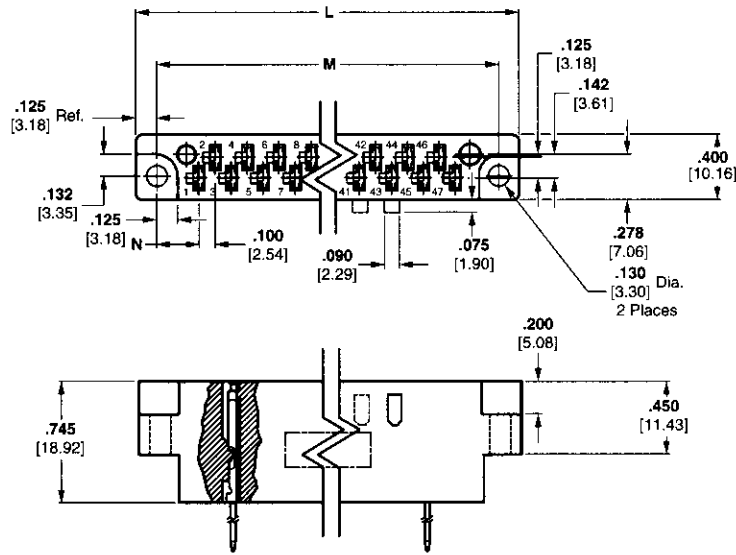
Pre-loaded Assemblies for Crimp Contacts, TERMI-POINT Clip or Wrap-Type Post Contacts, Solder/Weld Contacts

Materials:

Housing — Diallyl phthalate glass-filled polyester, green

Contact — Phosphor bronze

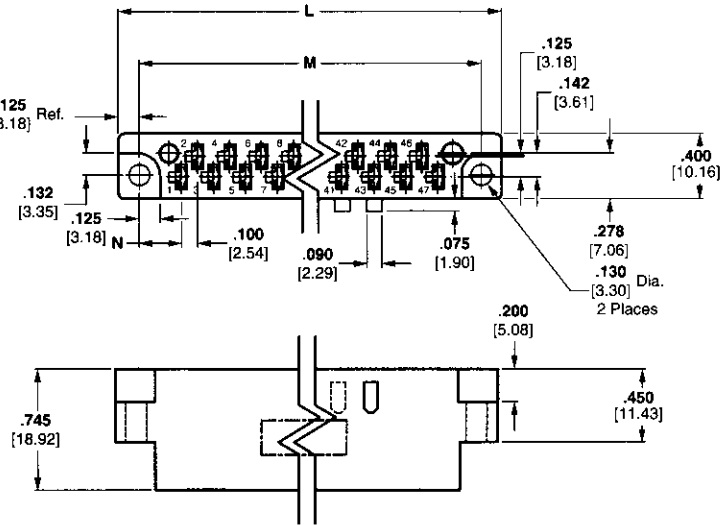
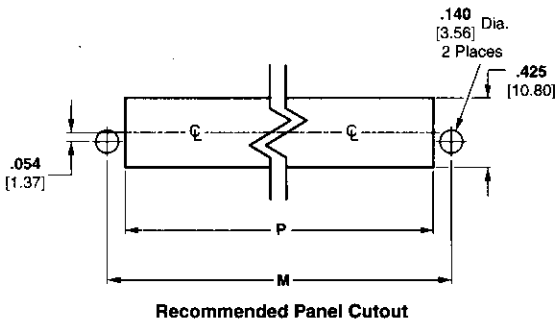
Posts — Brass, tin plated



Receptacle Housing

Material:

Diallyl phthalate



Printed Circuit Board Connectors

Diallyl Phthalate

No. of Pos.	Post in.	Length mm	No. of Clip or Wrap Type Terminations	Dimensions				Cutout Dim. for Mounting P	Preloaded Housing Part No. .031 x .062 [0.79 x 1.57] Post Gold Plate Thickness .000030 [0.00076]	Housings for Crimp or Eyelet Type Contact		
				L	M	N	Commercial Type Part No.			Military Type CR-Receptacle		
										Military Part No.	Part No.	
17	.370	9.40	1	2.390 60.71	2.130 54.10	.265 6.73	1.910 48.51	582828-4	3-582151-1	21097/13-01	5-582151-1	
23	.770	19.65	3	2.990 75.95	2.730 69.34	.265 6.73	2.510 63.75	—	3-582151-2	21097/13-02	5-582151-2	
29	1.000	25.40	4	3.590 91.19	3.330 84.58	.265 6.73	3.110 78.99	582830-1 582830-2	3-582151-3	21097/13-03	5-582151-3	
		.770	19.65									3
35	1.000	25.40	4	4.190 106.43	3.930 99.82	.265 6.73	3.710 94.23	582831-1 — 582831-4	3-582151-4	21097/13-04	5-582151-4	
		.770	19.65									3
		.600	15.24									2
41	.370	9.40	1	4.790 121.67	4.530 115.06	.265 6.73	4.310 109.47	— 582832-4	3-582151-5	21097/13-05	5-582151-5	
		.770	19.65									3
		.600	15.24									2
47	.370	9.40	1	5.623 142.82	5.363 136.22	.381 9.68	5.143 130.63	582819-1 582819-2	3-582307-1	21097/13-06	5-582307-1	
		1.000	25.40									4
		.770	19.65									3