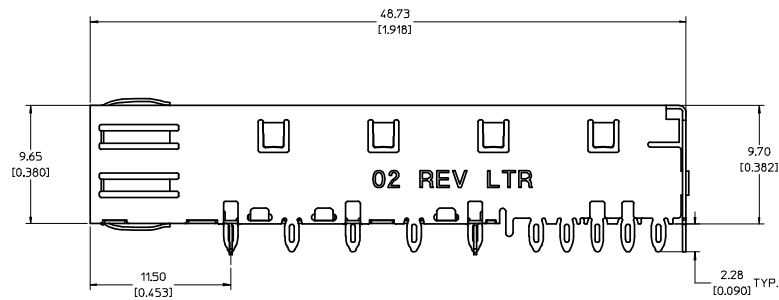
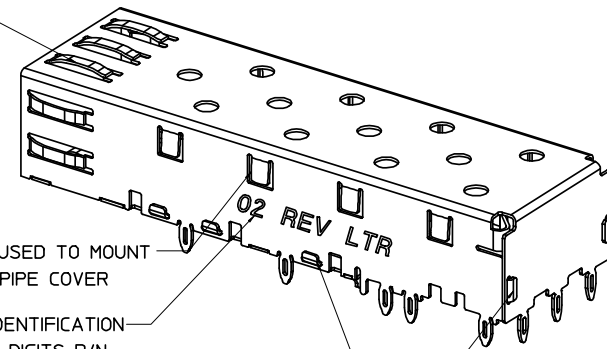


SPRING FINGER GASKET WITH TWO POINTS OF CONTACT. COMPLIES WITH (SFP) MSA BOARD AND BEZEL LOCATIONS.



NOTES:

- PRESS FIT LEGS, 0.090 INCHES LONG. 1.57 [0.062] MINIMUM PCB THICKNESS.
- THIS CAGE IS FOR SINGLE SIDED USE ONLY.
- CAN BE USED WITH THE FOLLOWING LIGHT PIPE PART NUMBERS:

747260001 - LIGHT PIPE FROM BACK TO TOP  
(REFER TO DOCUMENT SD-74726-001)

747260002 - LIGHT PIPE FROM SIDE TO TOP  
(REFER TO DOCUMENT SD-74726-002)

- MATERIAL: COPPER ALLOY  
PLATING: PRE-PLATED WITH NICKEL

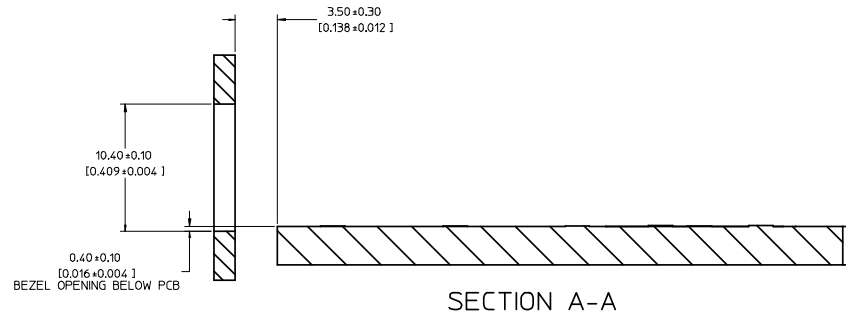
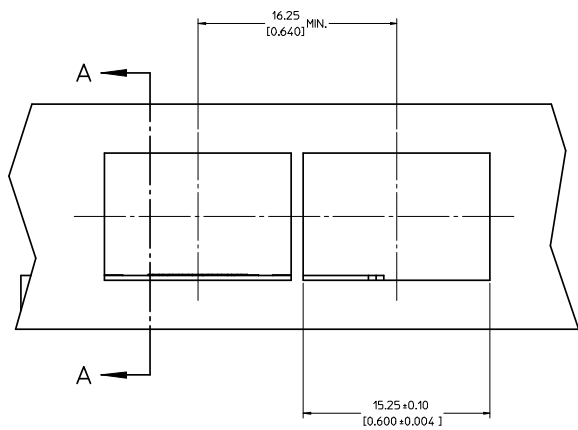
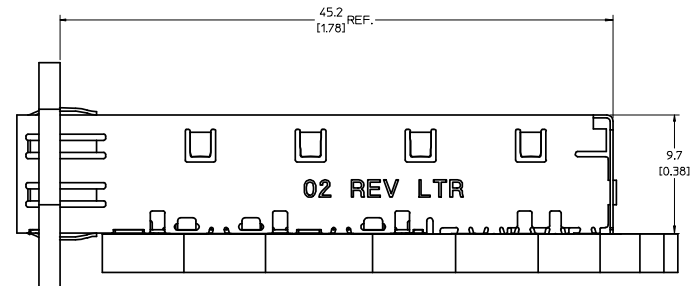
- THIS PART MEETS THE RESTRICTION OF HAZARDOUS SUBSTANCES IN ELECTRICAL AND ELECTRONIC EQUIPMENT (ROHS) DIRECTIVE (2002/95/EC).

UPDATED VIEWS EC NO: USY2008-0242 DRAWN: CCOX 2007/12/07 CHKD: CCOX 2007/12/10 APPR: MONROE 2007/12/10	QUALITY SYMBOLS ▽=0 ▽=0	GENERAL TOLERANCES (UNLESS SPECIFIED): mm INCH 4 PLACES ±--- ±--- 3 PLACES ±--- ±.005 2 PLACES ±0.13 ±.01 1 PLACE ±0.25 ±--- ANGULAR ± 1°		DIMENSION STYLE MM/IN	SCALE 5:1	DESIGN UNITS METRIC	THIRD ANGLE PROJECTION
		DRAFT WHERE APPLICABLE MUST REMAIN WITHIN DIMENSIONS		DRAWN BY CCOX 2007/01/18	DATE 2007/01/18	TITLE SFP ONE PIECE CAGE PRESS-FIT (0.090 LEGS)	MOLEX INCORPORATED
		MATERIAL NO. 747370002		DOCUMENT NO. SD-74737-002		SHEET NO. 1 OF 4	

THIS DRAWING CONTAINS INFORMATION THAT IS PROPRIETARY TO MOLEX INCORPORATED AND SHOULD NOT BE USED WITHOUT WRITTEN PERMISSION



20 19 18 17 16 15 14 13 12 11 10 9 8 7 6 5 4 3 2 1

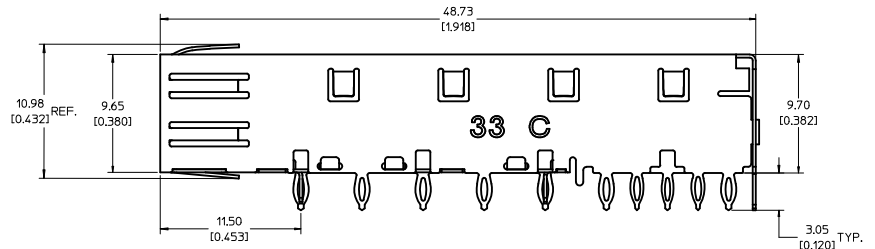
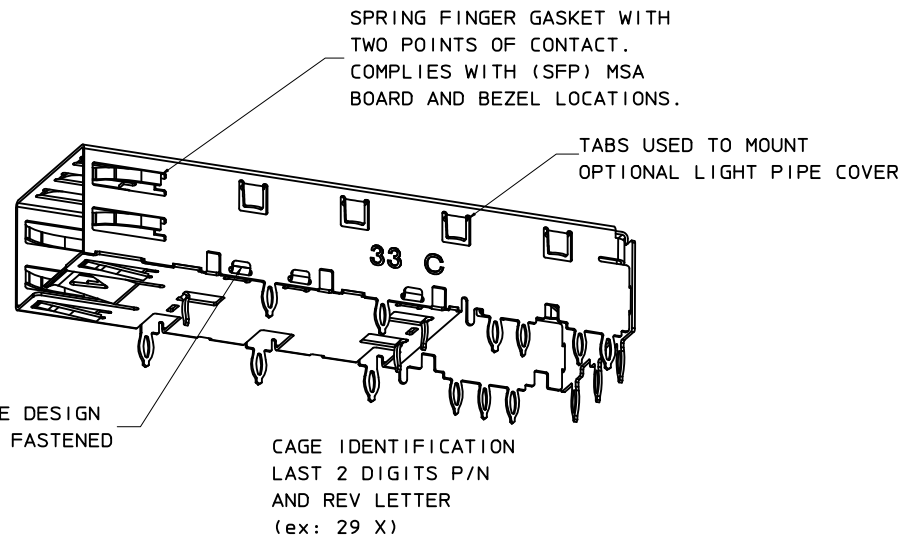
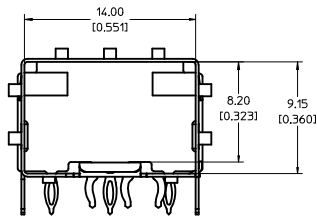
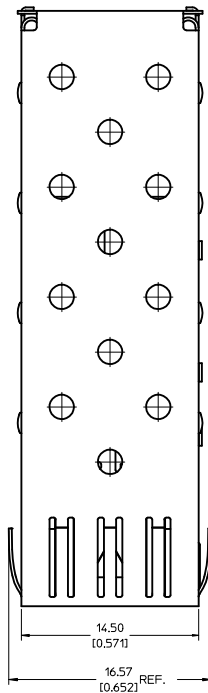
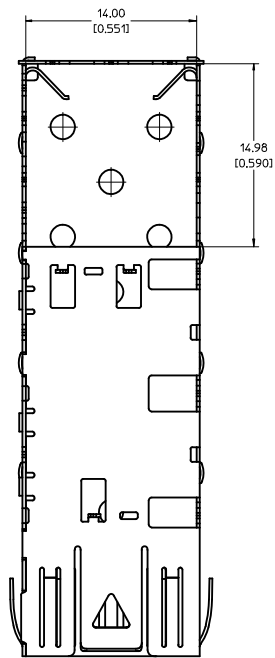


<b>UPDATED VIEWS</b> EC NO: USY2008-0242 DRAWN: CCOX 2007/12/10 CHYK: 2007/12/10 APPR: KMONROE 2007/12/10	QUALITY SYMBOLS	GENERAL TOLERANCES (UNLESS SPECIFIED)	DIMENSION STYLE	SCALE	DESIGN UNITS	THIRD ANGLE PROJECTION
	▽=0 ▽=0	mm      INCH 4 PLACES ± --- ± --- 3 PLACES ± --- ± .005 2 PLACES ± 0.13 ± .01 1 PLACE ± 0.25 ± --- ANGULAR ± 1 °	MM/IN	5:1	METRIC	DRAWN BY: CCOX DATE: 2007/01/18 CHECKED BY: RMAHMOOD DATE: 2007/01/18 APPROVED BY: RMAHMOOD DATE: 2007/01/18
	DRAFT WHERE APPLICABLE MUST REMAIN WITHIN DIMENSIONS	MATERIAL NO: 747370002 DOCUMENT NO: SD-74737-002	TITLE: SFP ONE PIECE CAGE PRESS-FIT (0.090 LEGS) MOLEX INCORPORATED	SHEET NO: 3 OF 4		
	SIZE D THIS DRAWING CONTAINS INFORMATION THAT IS PROPRIETARY TO MOLEX INCORPORATED AND SHOULD NOT BE USED WITHOUT WRITTEN PERMISSION					

19 18 17 16 15 14 13 12 11 10 9 8 7 6 5 4 3 2 1

DATE	REV	CHANGES
2007/01/17	A	INITIAL RELEASE
2007/01/24	B	UPDATED VIEWS
2007/02/08	C	ADDED NOTE 5
2007/03/06	D	ADDED SHEETS 2 AND 3
2007/01/23	E	UPDATED 2D VIEWS TO REFLECT CHG'S MADE TO EM-74737-002 REV E.
2007/04/25	F	[1] ADDED REV SHEET, [2] UPDATED REV NOTES A-D, [3] UPDATED DRAWING TO REFLECT CHG'S MADE TO EM-74737-002-ASSY REV D, [4] ON SHT1 ROTATED BTM_VIEW 180 DEGREES.
2007/11/27	G	[1] UPDATED VIEWS TO MATCH EM-74737-002-ASSY REV E.

UPDATED VIEWS EC NO: USY2008-0242 DRAWN BY: CCOX CHKD: 2007/12/10 APPR: KMORDE 2007/12/10	QUALITY SYMBOLS ▽=0 ▽=0	GENERAL TOLERANCES (UNLESS SPECIFIED)		DIMENSION STYLE MM/IN	SCALE 1:1	DESIGN UNITS METRIC	THIRD ANGLE PROJECTION	
		4 PLACES ± --- ± --- 3 PLACES ± --- ± .005 2 PLACES ± 0.13 ± .01 1 PLACE ± 0.25 ± --- ANGULAR ± 1°	DRAWN BY DATE CCOX 2007/01/18 CHECKED BY DATE RMAHMOOD 2007/01/18 APPROVED BY DATE RMAHMOOD 2007/01/18	TITLE SFP ONE PIECE CAGE PRESS-FIT (0.090 LEGS)		MATERIAL NO. 747370002		DOCUMENT NO. SD-74737-002
DRAFT WHERE APPLICABLE MUST REMAIN WITHIN DIMENSIONS		SIZE D		THIS DRAWING CONTAINS INFORMATION THAT IS PROPRIETARY TO MOLEX INCORPORATED AND SHOULD NOT BE USED WITHOUT WRITTEN PERMISSION				SHEET NO. 4 OF 4



**NOTES:**

- PRESS FIT LEGS, 0.120 INCHES LONG.  
1.57 [0.062] MINIMUM PCB THICKNESS.
- THIS CAGE IS FOR SINGLE SIDED USE ONLY.
- CAN BE USED WITH THE FOLLOWING LIGHT PIPE PART NUMBERS:  
747260001 - LIGHT PIPE FROM BACK TO TOP  
(REFER TO DOCUMENT SD-74726-001)  
747260002 - LIGHT PIPE FROM SIDE TO TOP  
(REFER TO DOCUMENT SD-74726-002)
- MATERIAL: COPPER ALLOY  
PLATING: PRE-PLATED WITH NICKEL
- THIS PART MEETS THE RESTRICTION OF HAZARDOUS SUBSTANCES IN ELECTRICAL AND ELECTRONIC EQUIPMENT (ROHS) DIRECTIVE (2002/95/EC).

<b>REV DIMS-CAGE REV</b> EC NO: USY2010-0515 DRAWN BY: CHYOKI JANOTA APPROV: K JANOTA 2010/04/27 2010/05/04	<b>QUALITY SYMBOLS</b> ▽=0 ▽=0	<b>GENERAL TOLERANCES (UNLESS SPECIFIED)</b> <table border="1"> <tr> <th></th> <th>mm</th> <th>INCH</th> </tr> <tr> <td>4 PLACES</td> <td>±0.05</td> <td>±0.002</td> </tr> <tr> <td>3 PLACES</td> <td>±0.025</td> <td>±0.001</td> </tr> <tr> <td>2 PLACES</td> <td>±0.13</td> <td>±0.01</td> </tr> <tr> <td>1 PLACE</td> <td>±0.25</td> <td>±0.01</td> </tr> </table>			mm	INCH	4 PLACES	±0.05	±0.002	3 PLACES	±0.025	±0.001	2 PLACES	±0.13	±0.01	1 PLACE	±0.25	±0.01	<b>DIMENSION STYLE</b> MM/IN	<b>SCALE</b> 5:1	<b>DESIGN UNITS</b> METRIC	THIRD ANGLE PROJECTION
			mm	INCH																		
4 PLACES	±0.05	±0.002																				
3 PLACES	±0.025	±0.001																				
2 PLACES	±0.13	±0.01																				
1 PLACE	±0.25	±0.01																				
<b>DRAFT WHERE APPLICABLE MUST REMAIN WITHIN DIMENSIONS</b>		<b>MATERIAL NO.</b> 747370033	<b>DATE</b> 2009/09/28	<b>DATE</b> 2009/09/28	<b>DATE</b> 2009/09/28	<b>DATE</b> 2009/09/28																

TITLE: SFP ONE PIECE CAGE PRESS-FIT (0.120 LEGS) W/ MODIFIED LATCH TANG

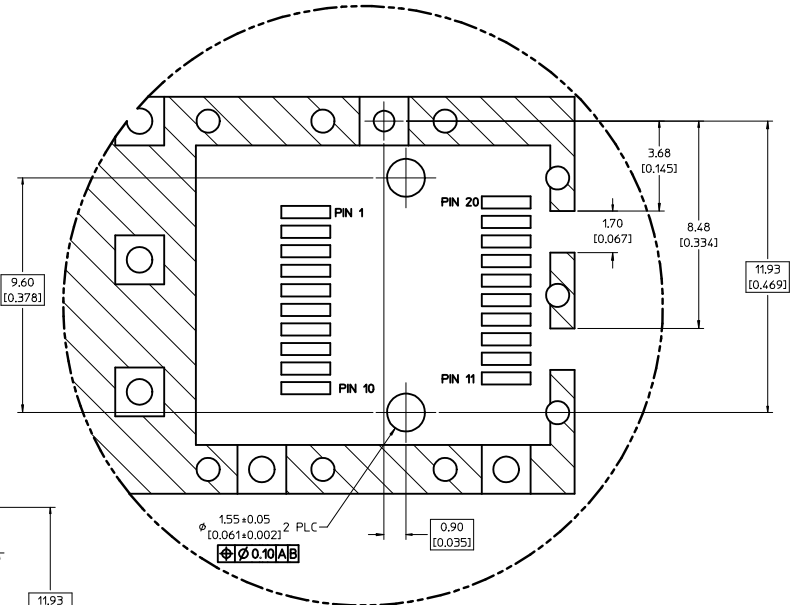
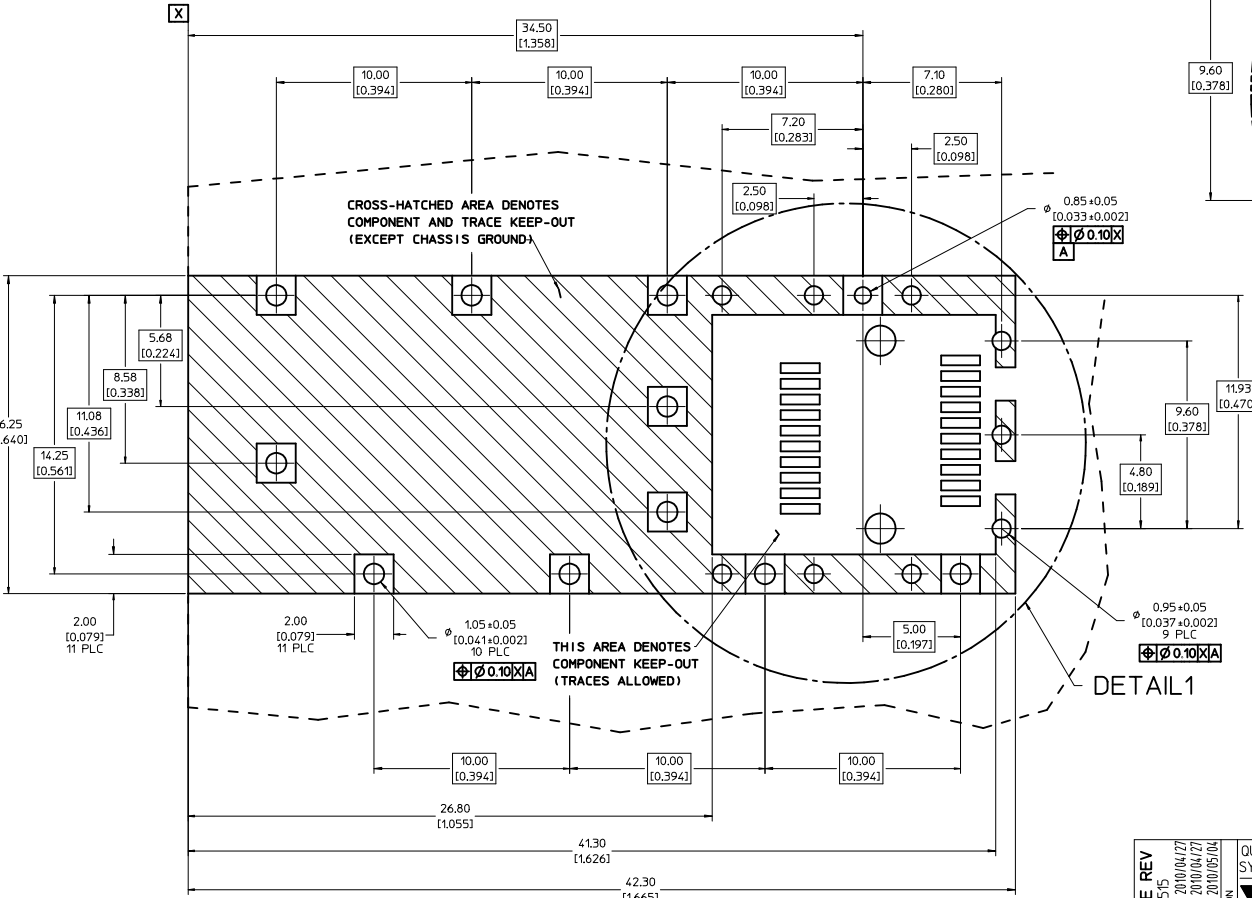
MOLEX INCORPORATED

DOCUMENT NO: SD-74737-0033

SHEET NO: 1 OF 3

THIS DRAWING CONTAINS INFORMATION THAT IS PROPRIETARY TO MOLEX INCORPORATED AND SHOULD NOT BE USED WITHOUT WRITTEN PERMISSION

1. PADS AND VIAS ARE CHASSIS GROUND.
2. HOLE LAYOUT SHOWN IS FOR SINGLE SIDED MOUNTING ONLY.
3. CONNECTOR PAD LAYOUT PER SFP MSA, WILL ACCOMMODATE MOLEX CONNECTOR SERIES 74441 OR EQUIVALENT.

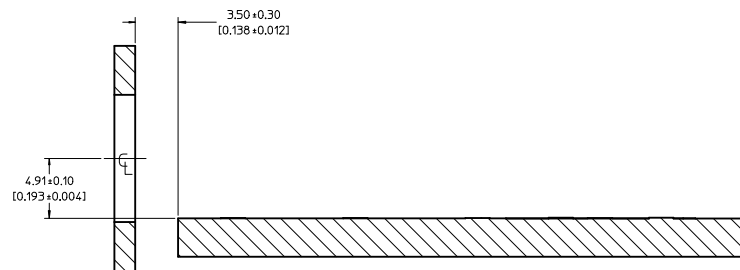
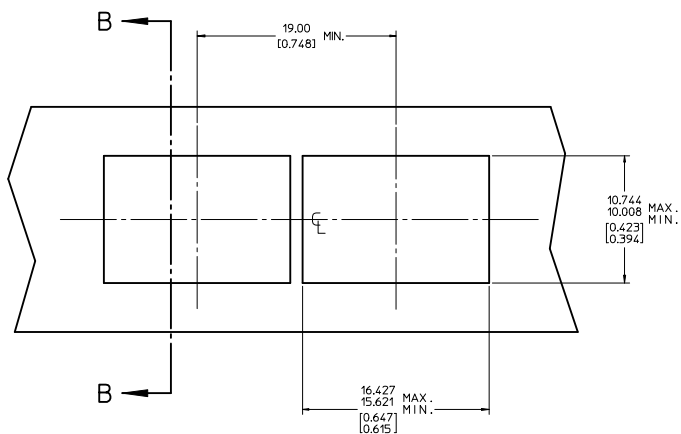
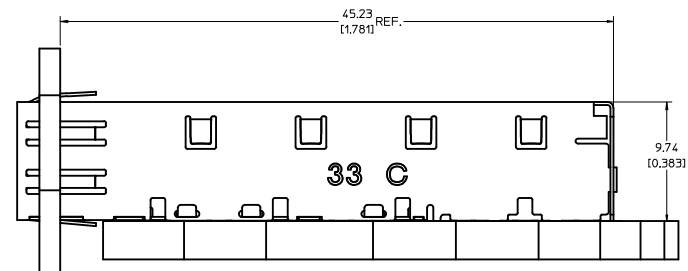


DETAIL 1  
SCALE 10:1

DETAIL 1

<b>REV DIMS-CAGE REV</b> IEC NO: USY2010-0515 DRAWN/SECRET 2010/04/27 CHKD/K.LANITA 2010/04/27 APPR/K.LANITA 2010/05/04	<b>QUALITY SYMBOLS</b> ▽=0 ▽=0	<b>GENERAL TOLERANCES (UNLESS SPECIFIED)</b>		DIMENSION STYLE <b>MM/IN</b>	SCALE <b>8:1</b>	DESIGN UNITS <b>METRIC</b>	THIRD ANGLE PROJECTION	
		4 PLACES ±--- ±---	INCH	DRAWN BY JRESENDE	DATE 2009/09/28	TITLE <b>SFP ONE PIECE CAGE PRESS-FIT (0.120 LEGS) W/ MODIFIED LATCH TANG</b>		
		3 PLACES ±--- ±0.005	2 PLACES ±0.13 ±0.01	CHECKED BY JRESENDE	DATE 2009/09/28	MOLEX INCORPORATED		
		1 PLACE ±0.25 ±---	ANGULAR ± 1 °	APPROVED BY JRESENDE	DATE 2009/09/28	MATERIAL NO. <b>747370033</b>	DOCUMENT NO. <b>SD-74737-0033</b>	SHEET NO. <b>2 OF 3</b>
DRAFT WHERE APPLICABLE MUST REMAIN WITHIN DIMENSIONS		THIS DRAWING CONTAINS INFORMATION THAT IS PROPRIETARY TO MOLEX INCORPORATED AND SHOULD NOT BE USED WITHOUT WRITTEN PERMISSION						

20 19 18 17 16 15 14 13 12 11 10 9 8 7 6 5 4 3 2 1



SECTION B-B

<b>REV DIMS-CAGE REV</b> IEC NO: USY2010-0515 DRAWN/SECRET 2010/04/27 CHKD/K.JANOTA 2010/04/27 APPR/K.JANOTA 2010/05/04 REV DESCRIPTION	QUALITY SYMBOLS	GENERAL TOLERANCES (UNLESS SPECIFIED)	DIMENSION STYLE	SCALE	DESIGN UNITS	THIRD ANGLE PROJECTION
	▽=0 ▽=0	mm INCH 4 PLACES ± --- ± --- 3 PLACES ± --- ± 0.005 2 PLACES ± 0.13 ± 0.01 1 PLACE ± 0.25 ± --- ANGULAR ± 1 °	MM/IN	5:1	METRIC	DRAWN BY DATE JRESENDE 2009/09/28 CHECKED BY DATE JRESENDE 2009/09/28 APPROVED BY DATE JRESENDE 2009/09/28
	DRAFT WHERE APPLICABLE MUST REMAIN WITHIN DIMENSIONS	MATERIAL NO. 747370033	DOCUMENT NO. SD-74737-0033	TITLE SFP ONE PIECE CAGE PRESS-FIT (0.120 LEGS) W/ MODIFIED LATCH TANG		SHEET NO. 3 OF 3
	THIS DRAWING CONTAINS INFORMATION THAT IS PROPRIETARY TO MOLEX INCORPORATED AND SHOULD NOT BE USED WITHOUT WRITTEN PERMISSION					

19 18 17 16 15 14 13 12 11 10 9 8 7 6 5 4 3 2 1