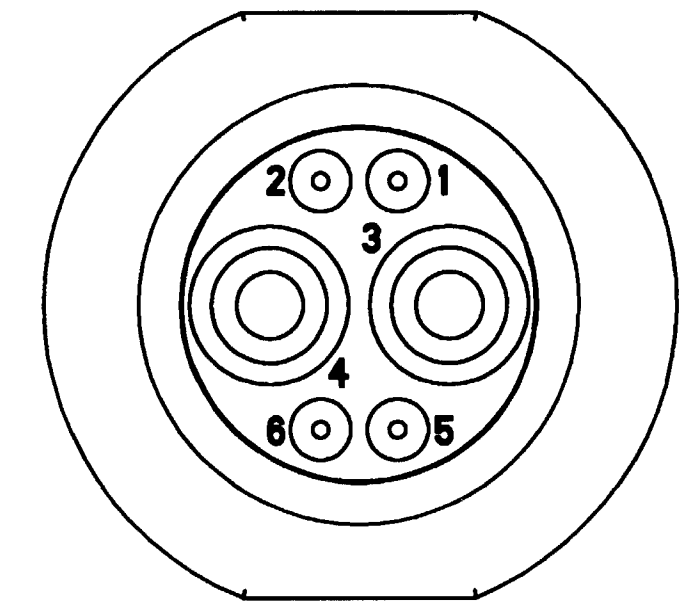
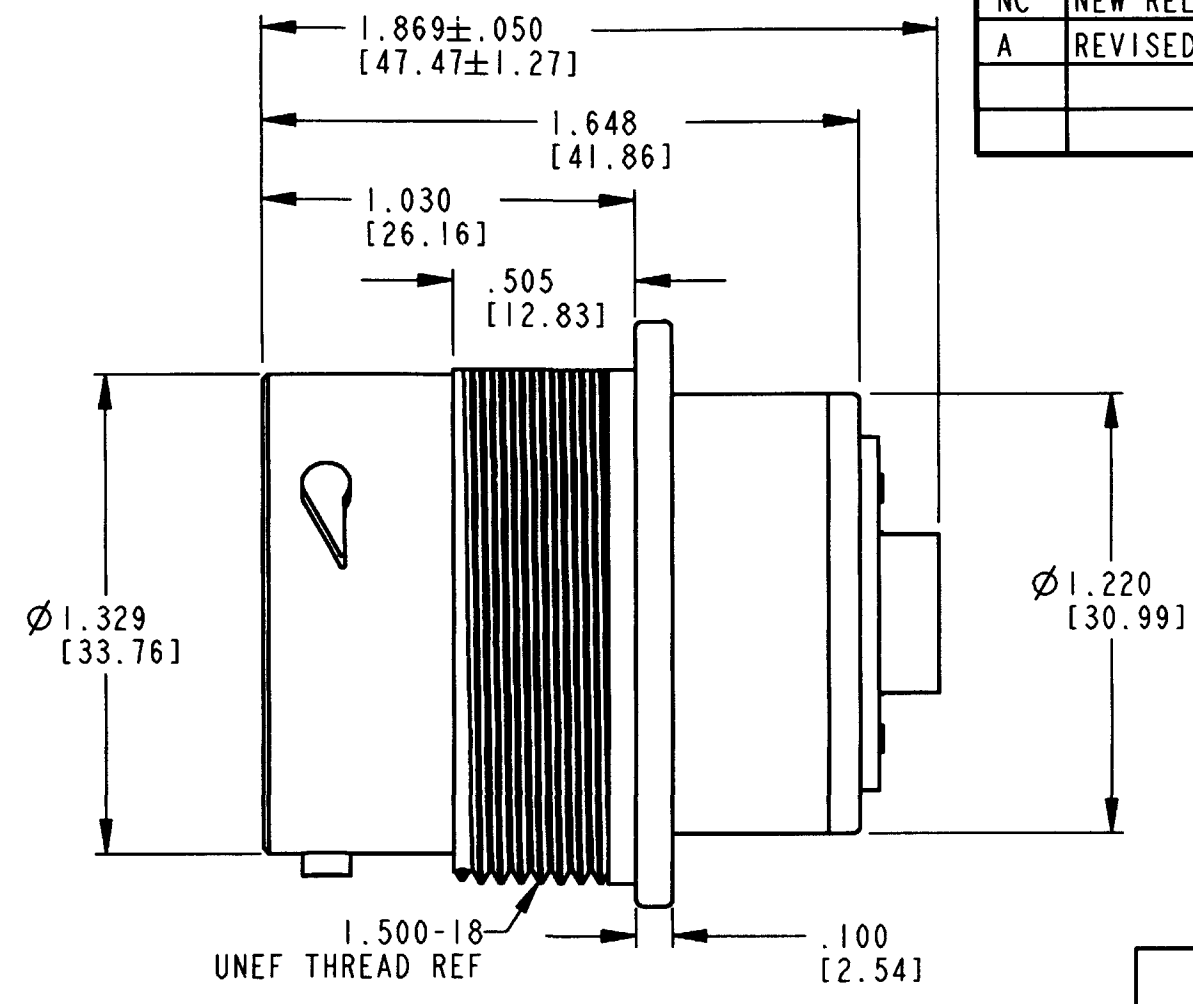
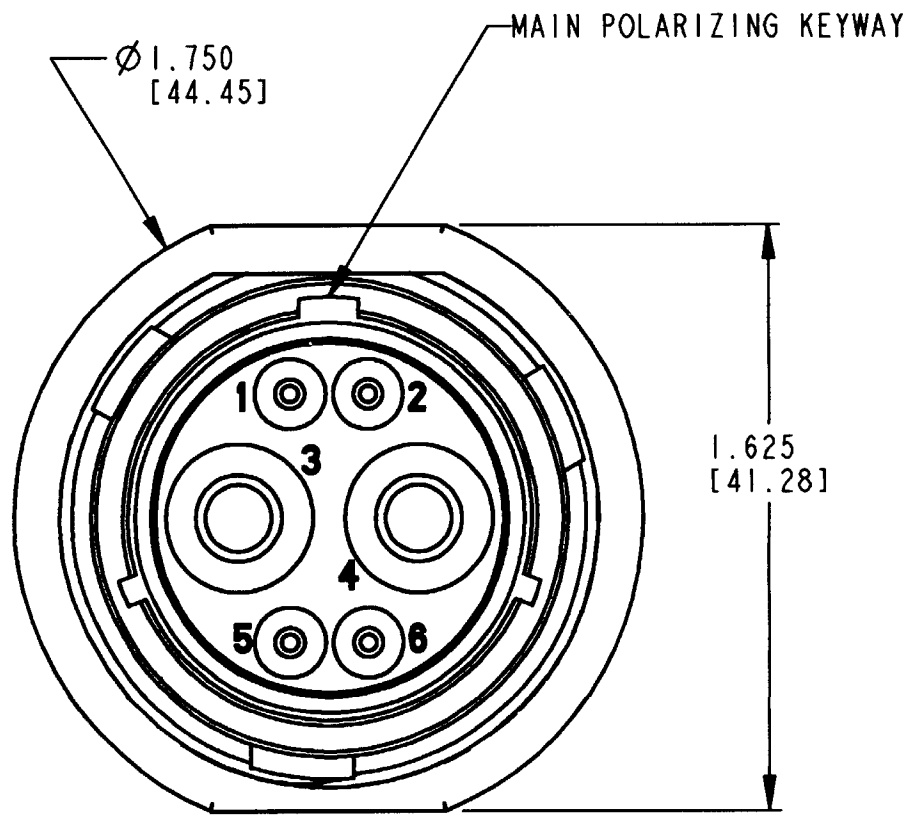


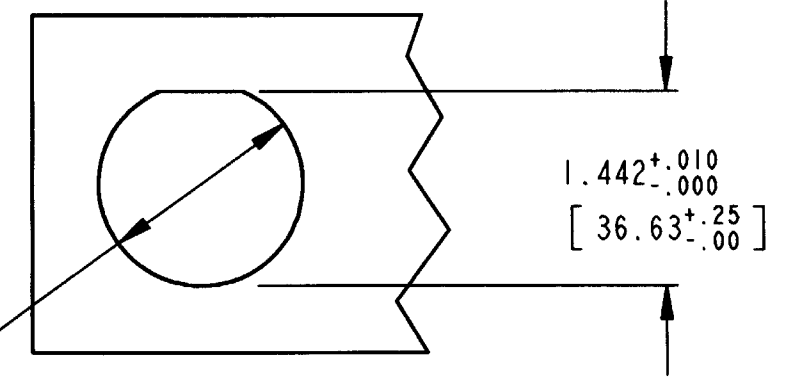
REV  
A HDP24-18-6P \*

REVISIONS			
SYM	DESCRIPTION	DATE	APPROVED
NC	NEW RELEASE PER E.O. P17330	8/2/01	R.D.R.
A	REVISED PER E.O. P17424	2-1-02	RDR



- 6. THIS PART MATES WITH HDP26-18-6S\*-\*\*\*\*. (\*\*\*\*= ALL MODIFICATIONS, \*= TYPE OF SEAL.)
- 5. FOR CONTACT AND WIRE PERFORMANCE AND APPLICATION CHARACTERISTICS SEE ENVELOPE DWG. 0425-015-0000 AND 0425-021-0000.
- 4. DIMENSIONS ARE IN INCHES [MILLIMETERS].
- 3. RECOMMENDED PANEL THICKNESS: .062[1.58] TO .187[4.76].
- 2. THIS CONNECTOR WILL ACCOMMODATE THE FOLLOWING WIRE INSULATION DIAMETERS.

- 8. WHEN \* = N: NORMAL SEAL  
WHEN \* = E: REDUCED DIAMETER SEAL.
- 7. DIMENSION TOLERANCES ARE ±.025[±.63] UNLESS OTHERWISE NOTED.



8 SEAL TYPE	CONTACT SIZE	MIN INSULATION O.D.	MAX INSULATION O.D.	5 WIRE GAUGE AWG [mm <sup>2</sup> ] RANGE
N	16	.100 [2.54]	.135 [3.40]	14-20 [2.0-0.5mm <sup>2</sup> ]
E	16	.053 [1.35]	.120 [3.05]	14-20 [2.0-0.5mm <sup>2</sup> ]
N OR E	4	.261 [6.63]	.292 [7.42]	6 [13mm <sup>2</sup> ]

1. THIS RECEPTACLE TO BE USED WITH 114020-90 (ALUMINUM) OR 2411-002-1805 (PLASTIC) PANEL NUT AND 2414-002-1800 LOCKWASHER.

NOTES:

Ø 1.507±.005 [38.28±.12]

RECOMMENDED MOUNTING HOLE

SIGNATURE & DATE	
DR	X. SANCHEZ 27JUNE01
CHK	J. [Signature] 1/31/02
PE	A. [Signature] 1/31/02
APPD	[Signature] 1-31-02
SCALE	NONE WT

RECEPTACLE CONNECTOR  
18-6 ARRANGEMENT  
HDP20 SERIES

ENVELOPE

CP	MATL. CODE
The Deutsch Company DEUTSCH I.P.D. 3850 INDUSTRIAL AVE. HEMET, CALIF. 92545	
<b>B HDP24-18-6P *</b>	
DWG SIZE	CODE SHEET   OF