

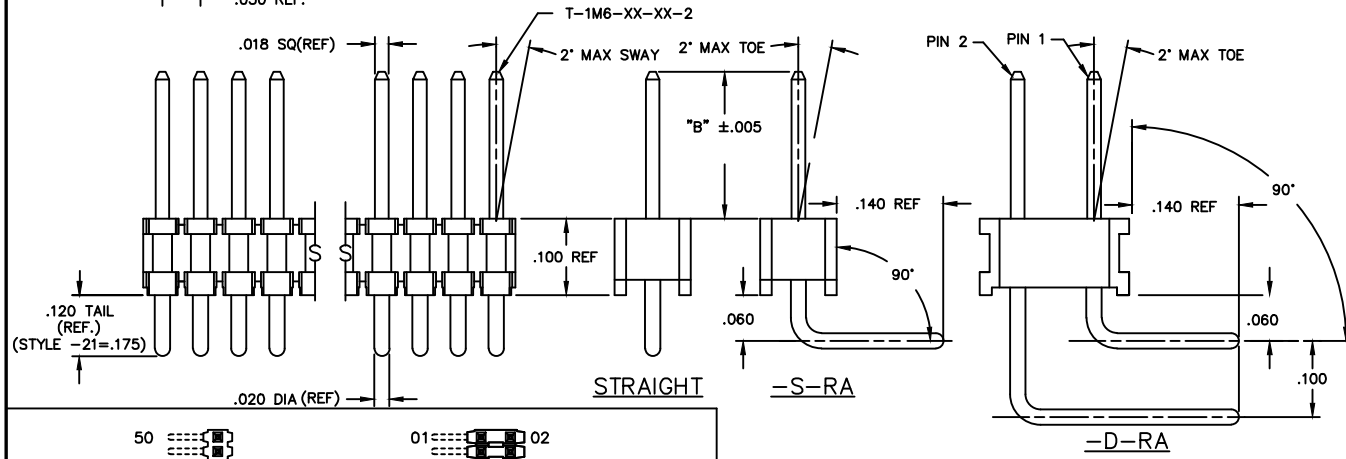
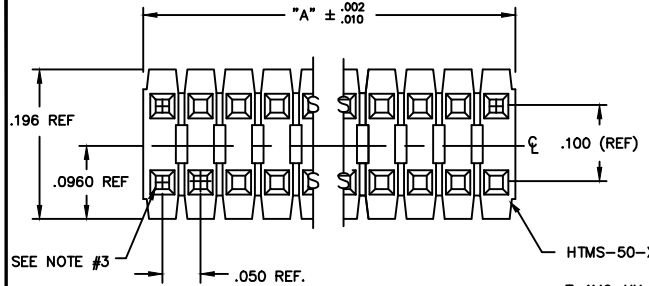
REVISIONS BO
DO NOT SCALE FROM THIS PRINT

- NOTES:
1. MAX ALLOWABLE BOW: .005 INCH/INCH.
2. MIN TERMINAL PUSHOUT FORCE: 2 lbs.
3. MAX PIN ROTATION IN BODY: 2°.
4. MAX CUT FLASH: .010
5. TUBE POSITIONS 8-50 ONLY. POSITIONS 1-7 TO BE BULK PACKAGED.
6. NOTE DELETED.

DIMENSIONS ARE IN INCHES		TOLERANCES ARE:		TITLE:	DWG NO:
ONE PLACE DECIMALS ± .1	THREE PLACE DECIMALS ± .005	ANGLES ± 2°		TERMINAL MICRO STRIP	TMS-1XX-XX-XX-X-XX-XXX
TWO PLACE DECIMALS ± .01	FOUR PLACE DECIMALS ± .0020				

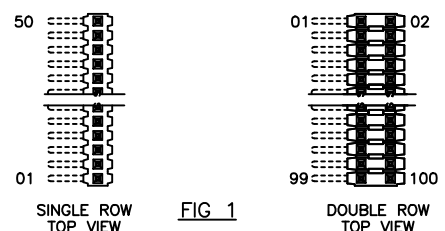
TMS-1XX-XX-XX-X-XX-XXX
 BODY LENGTH SPEC EXPRESSED IN # POS PER ROW (-01 THRU -50)
 "A" = 'XX' x .050
 TERMINAL SPEC SEE TABLE 1
 PLATING SPECIFICATION
 -G: 10μ" GOLD IN CONTACT AREA, 10μ" GOLD ON TAIL
 -T: MATTE TIN CONTACT AND TAIL
 ONLY AVAILABLE ON LEAD STYLES -01, -02, -51 AND -52.
 -S: 30μ" SELECTIVE GOLD IN CONTACT AREA, MATTE TIN ON TAIL
 -F: 3μ" FLASH GOLD IN CONTACT AREA, MATTE TIN ON TAIL
 -H: 30μ" HEAVY GOLD IN CONTACT AREA, 3μ" GOLD ON TAIL
 -FM: 3μ" SELECTIVE FLASH GOLD IN CONTACT AREA, MATTE TIN ON TAIL
 -SM: 30μ" SELECTIVE GOLD IN CONTACT AREA, MATTE TIN ON TAIL
 -TM: MATTE TIN CONTACT AND TAIL
 ONLY AVAILABLE ON LEAD STYLES -01, -02, -51 AND -52.
 -L: 10μ" LIGHT SELECTIVE GOLD IN CONTACT AREA, MATTE TIN ON TAIL

OPTION
 -POLARIZING SPECIFICATION
 XXX INDICATES POS. TO BE OMITTED (SEE FIG. 1)
 OPTION
 -RA: RIGHT ANGLE (SEE TABLE 1)
 (SINGLE & DOUBLE RA AVAILABLE IN STYLE -01, -02, & -03 ONLY)
 BODY SPECIFICATION
 -S: SINGLE (USE HTMS-50-S)
 -D: DOUBLE (USE HTMS-50-D)



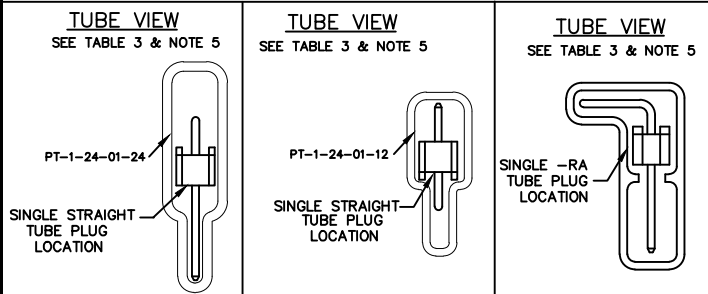
LENGTH	"L"	CONTACT AREA
-01	.440	.140
-02	.410	.140
-03	.610	.190
-04	.505	.190
-05	.705	.190
-12	.425	.165
-13	.625	.190
-14	.555	.190
-15	.755	.190
-16	.825	.190
-17	.320	.060
-18	.450	.190
-19	.650	.190
-21	.505	.190
-25	.330	.060
-26	.373	.075
-27	.398	.100
-28	1.050	.190

* REF FOR PIN LENGTH



BODY STYLE	LEAD STYLE	TUBE	PLUG
TMS-DOUBLE STRAIGHT STYLES	-01,-21, -51,-52	PT-1-24-01-22	TP-03
	-02	PT-1-24-01-95	TP-03
	-53	PT-1-24-02-66	TP-03
	-55,-56	PT-1-24-01-29	TP-03
	-54	PT-1-24-02-46	TP-03
	-57	PT-1-24-02-25	TP-03
	-58,-59	PT-1-24-16-29	TP-07
	-60	PT-1-24-18-29	TP-07
	-01	PT-1-24-01-24	TP-24
	-21	PT-1-24-02-29	TP-24
TMS-SINGLE STRAIGHT STYLES	-58,-59,-60	PT-1-24-10-03	TP-33
	-02	PT-1-24-01-12	TP-12
	-51,-52	PT-1-24-01-66	TP-24
	-53,-54, -55,-56	PT-1-24-02-03	TP-24
	-57	PT-1-24-01-46	TP-24
TMS-DOUBLE RIGHT ANGLE	-01,-02,-03	PT-1-24-02-66	TP-03
	-01,-02,-03	PT-1-24-01-66	TP-24

STRAIGHT OPTION		TABLE 1 RIGHT ANGLE OPTION			
LEAD STYLE	TERMINAL SPEC.	LEAD STYLE	PIN #1	PIN #2	"B"
-01	T-1M6-18-XX-2	-01	T-1M6-14-XX-2	T-1M6-15-XX-2	.230
-02	T-1M6-17-XX-2	-02	T-1M6-12-XX-2	T-1M6-13-XX-2	.100
-03	N/A	-03	T-1M6-18-XX-2	T-1M6-19-XX-2	.125
-21	T-1M6-21-XX-2	-21	N/A	N/A	.250
-51	T-1M6-02-XX-2	-51	N/A	N/A	.190
-52	T-1M6-12-XX-2	-52	N/A	N/A	.205
-53	T-1M6-04-XX-2	-53	N/A	N/A	.285
-54	T-1M6-14-XX-2	-54	N/A	N/A	.335
-55	T-1M6-03-XX-2	-55	N/A	N/A	.390
-56	T-1M6-13-XX-2	-56	N/A	N/A	.405
-57	T-1M6-19-XX-2	-57	N/A	N/A	.430
-58	T-1M6-05-XX-2	-58	N/A	N/A	.485
-59	T-1M6-15-XX-2	-59	N/A	N/A	.535
-60	T-1M6-16-XX-2	-60	N/A	N/A	.605



MATERIAL:
INSULATOR:
LCP UL94 V-0
COLOR: BLACK
TERMINAL:
PHOSPHOR BRONZE

EDS/PROD/ASSEMBLY/000
TMS-ASM

samtec

520 PARK EAST BLVD. NEW ALBANY, INDIANA 47151-1147
PHONE (812) 944-6733 P.O. BOX 1147
CODE 55322

MATERIAL: PHOSPHOR BRONZE

MADE BY: PURVIS 8-13-87
CHECKED BY: WILLIAMS 10-21-87

ENG. APPROVAL: TMS-1XX-XX-XX-X-XX-XXX
SHEET 1 OF 1

PROPRIETARY NOTE
THIS DOCUMENT CONTAINS CONFIDENTIAL AND UNCLASSIFIED INFORMATION. THE INFORMATION IS THE PROPERTY OF SAMTEC CORPORATION. IT IS TO BE KEPT SECRET AND NOT TO BE DISCLOSED TO ANY OTHER PERSON OR ORGANIZATION WITHOUT THE WRITTEN PERMISSION OF SAMTEC CORPORATION. ANY UNAUTHORIZED DISCLOSURE OF THIS INFORMATION IS STRICTLY PROHIBITED AND WILL BE PROSECUTED TO THE FULL EXTENT OF THE LAW.