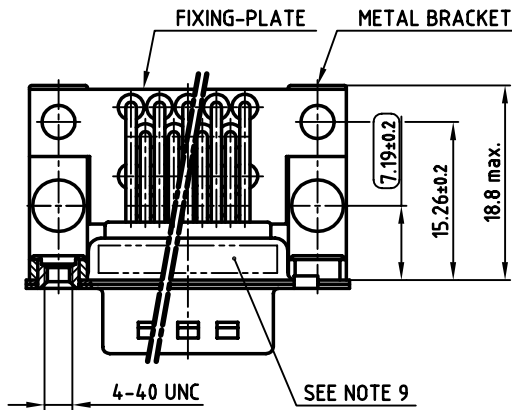
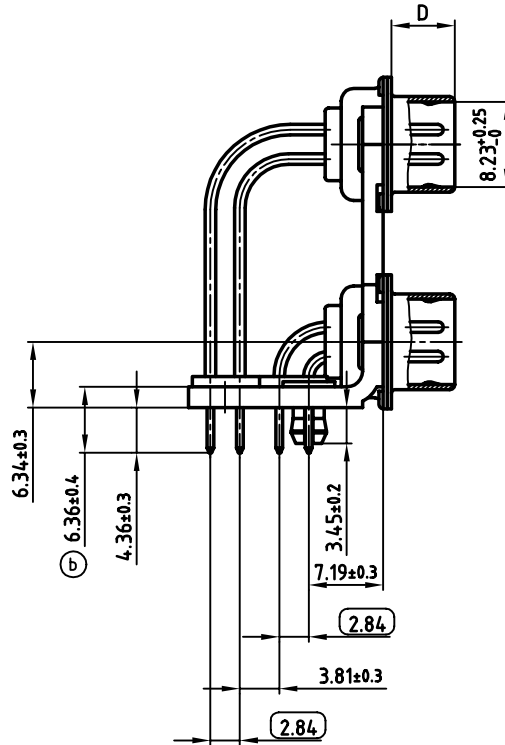
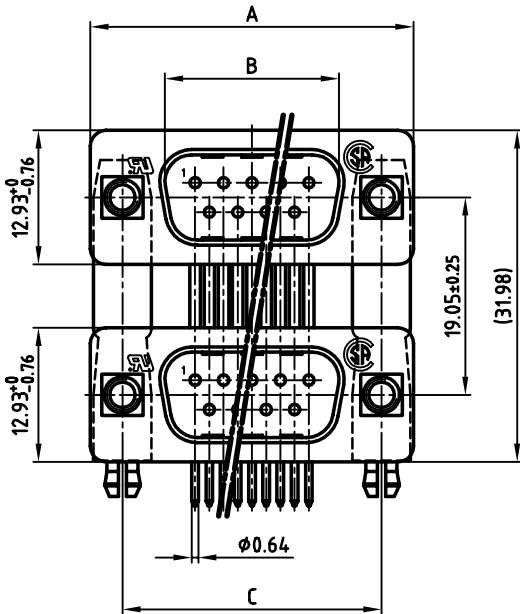


used for: D-SUB Dual Port

POS.	A ^{-0.76}	B ^{+0.25}	C	D ^{-0.3}
2x 9	31.19	16.79	25.00 ^{+0.12 -0.13}	6.12
2x15	39.52	25.12	33.30 ^{+0.15 -0.1}	6.12
2x25	53.42	38.84	47.04 ^{±0.13}	5.99
2x37	69.70	55.30	63.50 ^{±0.13}	5.99

PLATING	2 x 9pos.	2 x 15pos.	2 x 25pos.	2 x 37pos.
8µ" HARD GOLD OVER min. 50µ" NICKEL	163A19489X	163A19499X	163A19509X	163A19519X
30µ" HARD GOLD OVER min. 50µ" NICKEL	163C19489X	163C19499X	163C19509X	163C19519X



NOTES:

- METALSHELLS: STEEL; min. 320µ" TIN
- INSULATORS: PBT GF UL 94 V-0, BLACK
- CONTACTS: COPPER ALLOY
PLATING: SEE TABLE
- METAL BRACKET: STEEL; min. 320µ" TIN over 80µ" NICKEL
- THREADED INSERT: COPPER ALLOY; min. 200µ" TIN over 80µ" NICKEL
- FIXING-PLATE: PBT GF UL 94 V-0, BLACK
- P.C.B. HOLE DRILLINGS ON SHEET 2 + 3
- MAXIMUM TORQUE VALUE FOR THREAD: 6" LBS
- CONNECTOR IS PART MARKED: PART-NO. CONEC Y/WW
- = CRITICAL DIMENSION

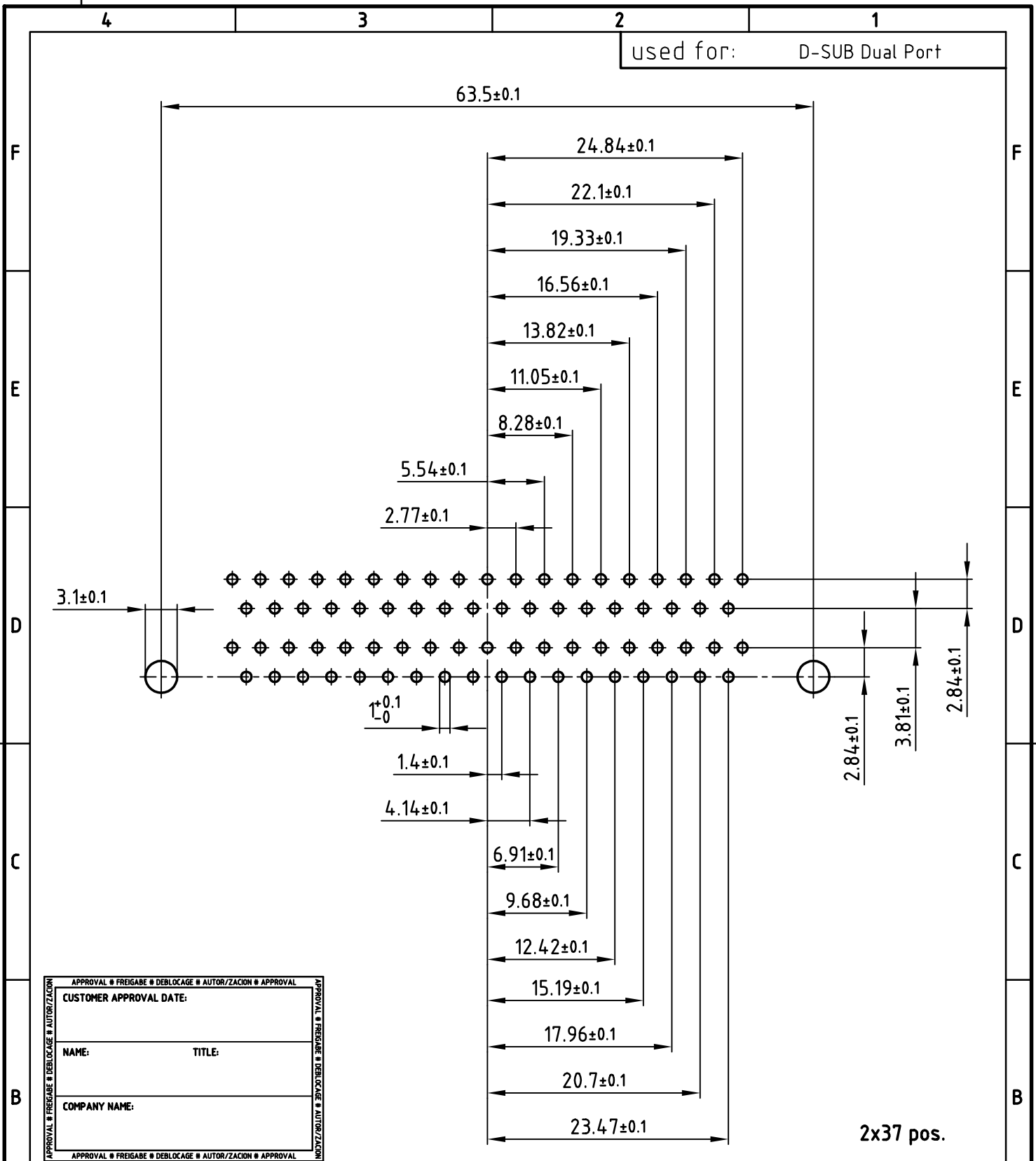
Directive 2002/95/EC
"RoHS"
Compliant

APPROVAL # FREIGABE # DEBLOCAGE # AUTORIZACION # APPROVAL	APPROVAL # FREIGABE # DEBLOCAGE # AUTORIZACION # APPROVAL
CUSTOMER APPROVAL DATE:	
NAME:	TITLE:
COMPANY NAME:	
APPROVAL # FREIGABE # DEBLOCAGE # AUTORIZACION # APPROVAL	APPROVAL # FREIGABE # DEBLOCAGE # AUTORIZACION # APPROVAL

THIS DRAWING MAY NOT BE COPIED OR REPRODUCED IN ANY WAY, AND MAY NOT BE PASSED ON TO A THIRD PARTY, WITHOUT WRITTEN PERMISSION. OWNERSHIP AND COPYRIGHT OF CONEC Gmbh DO NOT ALTER CAD DRAWING BY HAND

1 x b	Ä 1919	09.01.2004	Lehmen
rev.	description	date	name

tolerance	dim. in mm	scale: 2:1
material:	SEE NOTES	
title:	DUAL PORT 19.05mm MALE / MALE 2x9pos. - 2x37pos. with threaded insert and clip	
dwg no:	AutoCAD 2000	DIN-A
part no:	16K1A1071	3
part no:	SEE TABLE	
sh:	1/3	



APPROVAL # FREIGABE # DEBLOCAGE # AUTORIZACION # APPROVAL	
CUSTOMER APPROVAL DATE:	
NAME:	TITLE:
COMPANY NAME:	
APPROVAL # FREIGABE # DEBLOCAGE # AUTORIZACION # APPROVAL	

THIS DRAWING MAY NOT BE COPIED OR REPRODUCED IN ANY WAY, AND MAY NOT BE PASSED ON TO A THIRD PARTY WITHOUT WRITTEN PERMISSION.
 OWNERSHIP AND COPYRIGHT OF CONEC GmbH
 DO NOT ALTER CAD DRAWING BY HAND

tolerance			scale: 2:1	
dim. in mm			material: SEE SHEET 1	
2003	date	name	title: P.C.B. HOLE DRILLINGS DUAL PORT 19.05mm MALE / MALE with threaded insert and clip	
drawn	19.12.	Lehmenkühler		
appd.	19.12.	Mickenbecker		
norm	DIN 41652			
d-old				
rev.	description	date	name	dwg no: AutoCAD 2000
				DIN-A 4
				sh:3/3
				part no: SEE SHEET 1

A

A

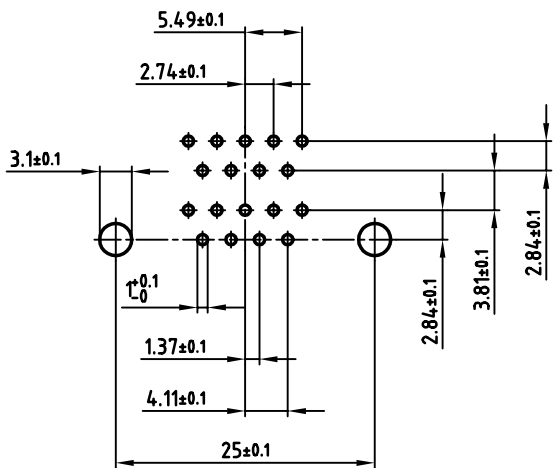
4

3

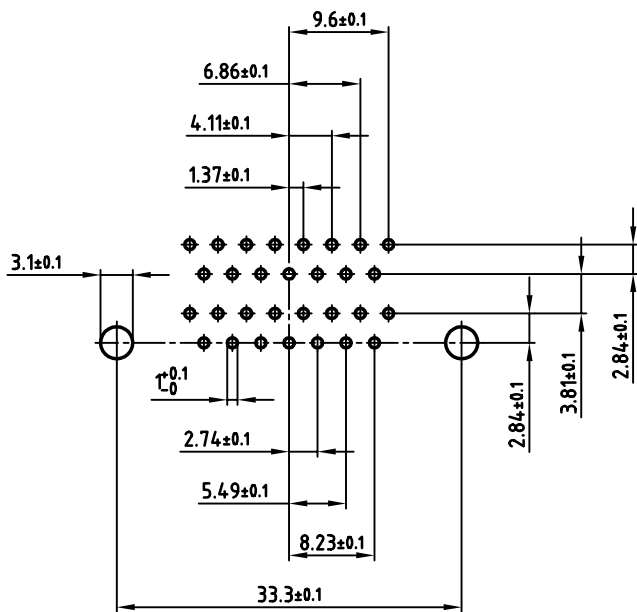
2

1

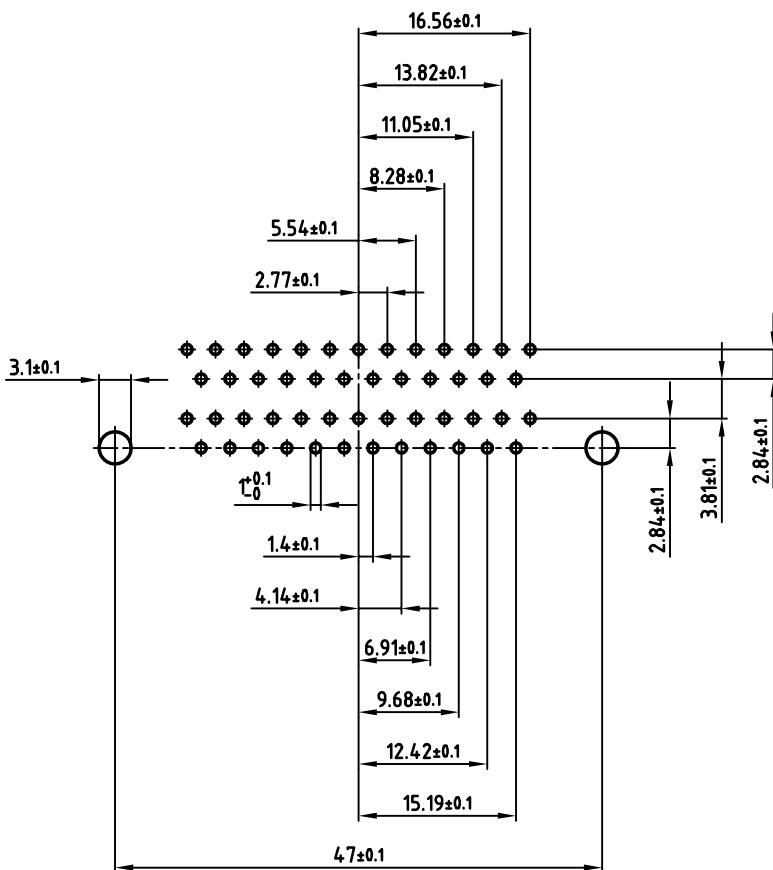
used for: D-SUB Dual Port



2x9 pos.



2x15 pos.



2x25 pos.

APPROVAL # FREIGABE # DEBLOCAGE # AUTORIZACION # APPROVAL

CUSTOMER APPROVAL DATE:

NAME: TITLE:

COMPANY NAME:

APPROVAL # FREIGABE # DEBLOCAGE # AUTORIZACION # APPROVAL

THIS DRAWING MAY NOT BE COPIED OR REPRODUCED IN ANY WAY, AND MAY NOT BE PASSED ON TO A THIRD PARTY, WITHOUT WRITTEN PERMISSION. OWNERSHIP AND COPYRIGHT OF CONEC GmbH DO NOT ALTER CAD DRAWING BY HAND

rev.	description	date	name

tolerance		scale:	2:1
	dim. in mm	material:	SEE SHEET 1
2003	date	name	title: P.C.B. HOLE DRILLINGS DUAL PORT 19.05mm MALE / MALE with threaded insert and clip
drawn	19.12.	Lehmenkühler	
appd.	19.12.	Mickenbecker	
norm	DIN 41652		
d-old			dwg no: AutoCAD 2000
			DIN-A
part no: SEE SHEET 1			3
			sh:2/3

dwg no: AutoCAD 2000

16K1A1071

part no: SEE SHEET 1