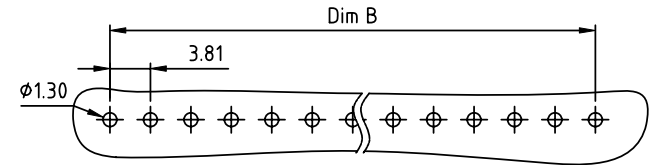
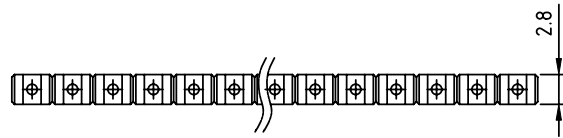
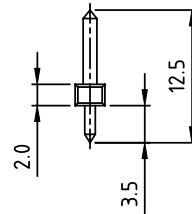
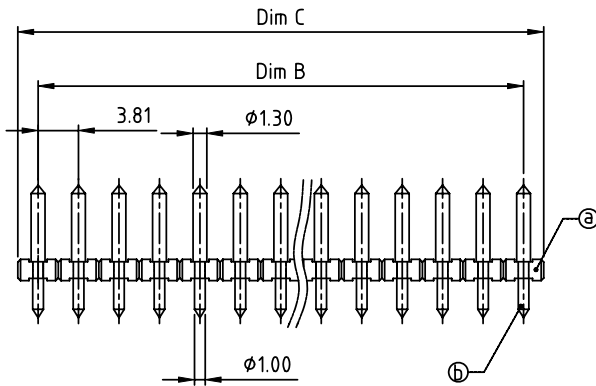


PRODUCT NUMBER	PITCH
OPxx42x000J0G	3.81 mm



RECOMMENDED P.C.B LAYOUT
TOP VIEW



Material:

- Item ① Insulator(housing): Thermoplastic (UL94V-0)
- Item ② Contact pin: Brass, Tin or Au plated.

Electrical:

- Voltage rating: 300V
- Current rating: 10A
- Withstanding Voltage: 1.6KV
- Operating temperature: -40°C to +115°C
- Soldering temperature: 260°C±5°C/5 Sec
- Safety Approval:

DIMENSION

Dim B	(N-1)×3.81
Dim C	N×3.81

N=Number of poles

Poles	Tolerance
2p-5p	±0.10
6p-9p	±0.15
10p-13p	±0.20
14p-17p	±0.25
18p-24p	±0.30

PART NO.: OP xx 42 x 0 00J0 G

Solid block 0 Tin plating 120u" Min RoHS compliant
 No. of poles 1 Gold plating 10u" (lead<4%)
 02 2 poles 2 Gold flash In copper Alloy
 03 3 poles

 24 24 poles

mat'l. code		surface ASME Y14.5	tolerance ASME Y14.5	projection 	product family TERMINAL BLOCK
ltr	ecn no	dr	date	tolerances unless otherwise specified	title TERMINAL BLOCK
				angles 	scale PLUGGABLE SOCKET, VERTICAL
				X°±1"	MM
				X.X±0.5	scale
				X.XX±0.3	dwg no
				X.XX±0.1	sheet 1 of 1
					size
					A4
					type
					CUSTOMER Drawing
sheet index	revision	A			
	sheet	1			