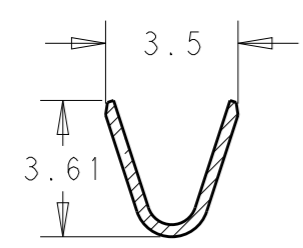
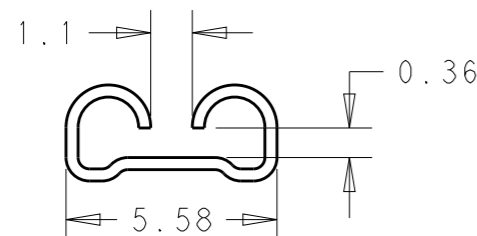
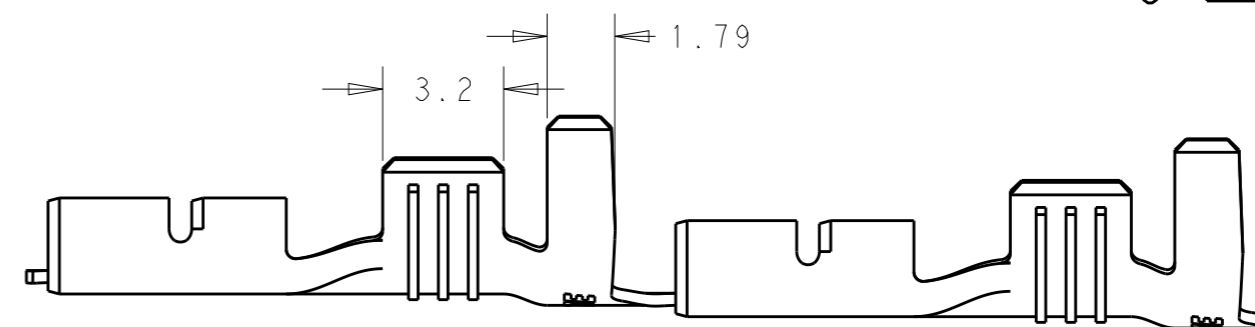
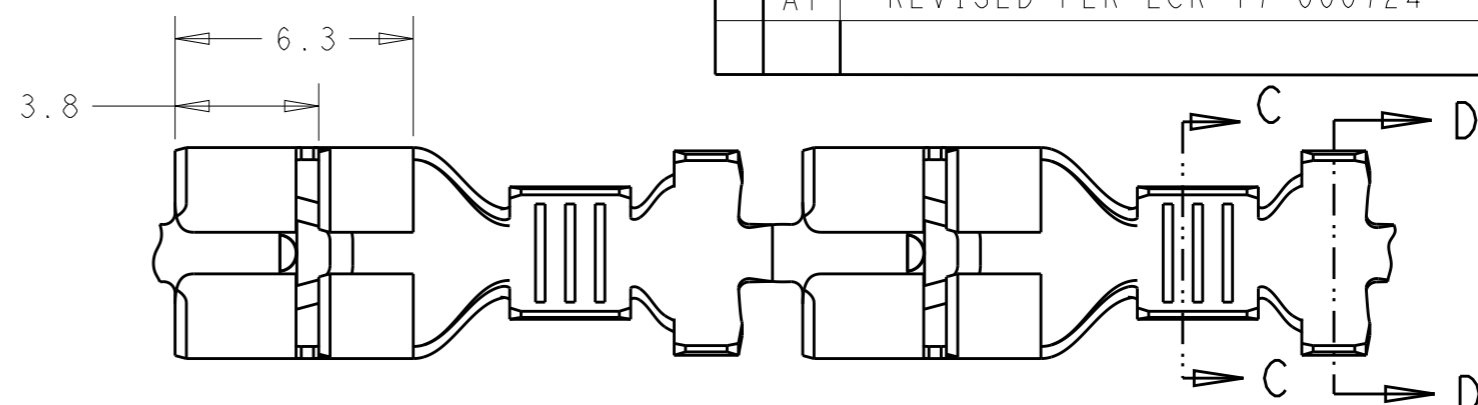
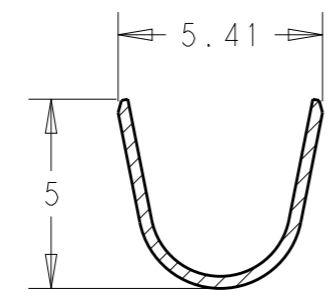


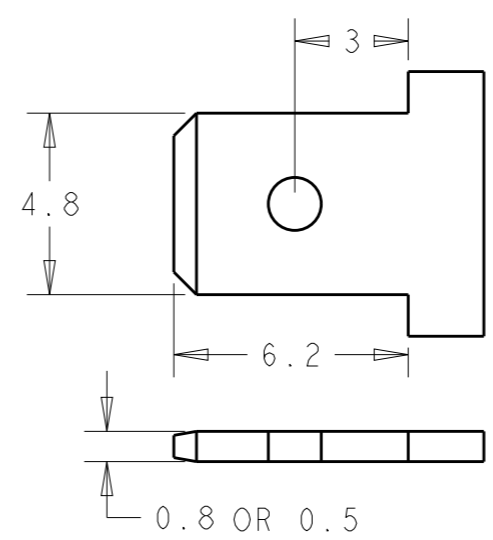
P	LTR	DESCRIPTION	DATE	DWN	APVD
	A1	REVISED PER ECR-17-000724	18JAN2017	HG	TD



SECTION C-C




SECTION D-D



RECOMMENDED MATING TAB DIMENSION

- 1) CONTINUOUS STRIP ON REELS.
- 2) WIRE SIZE IS 1.0mm<sup>2</sup> - 2.5mm<sup>2</sup>.
- 3) INSULATION RANGE 3.0-4.3
- 4) MATING TAB THK 0.50+0.04/- 0.03 or 0.80+0.04/- 0.03.
- 5) APPLICATION REMARK: THIS TERMINAL CAN BE USED O COUNTERPART TABS HAVING THICKNESS 0.5mm AND 0.8mm IT IS NOT ALLOWED TO MATE WITH 0.5mm TAB AFTER MATE WITH THE 0.8mm TAB.

TIN PLATED	BRASS	2293895-1
FINISH	MATERIAL	PART NO

THIS DRAWING IS A CONTROLLED DOCUMENT.		DWN 09SEP2015 JASON JIANG	 TE Connectivity		
DIMENSIONS: mm		CHK TIM DING			NAME 4.8mm FASTON REC. CTC FOR THK TABS 0.5mm AND 0.8mm
TOLERANCES UNLESS OTHERWISE SPECIFIED:		APVD TIM DING	PRODUCT SPEC 108-106242		
0 PLC ±0.5		PRODUCT SPEC	APPLICATION SPEC 114-106242		
1 PLC ±0.2		WEIGHT	-		
2 PLC ±0.10		SIZE	A3		
3 PLC ±0.05		CAGE CODE	-		
4 PLC ±0.000J		DRAWING NO	C-2293895		
ANGLES ±2		RESTRICTED TO	-		
FINISH		SCALE	N/A		
MATERIAL SEE TABLE		SHEET	1 OF 1		
-		REV	A1		
-		Customer Drawing			