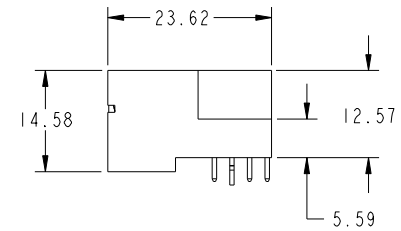
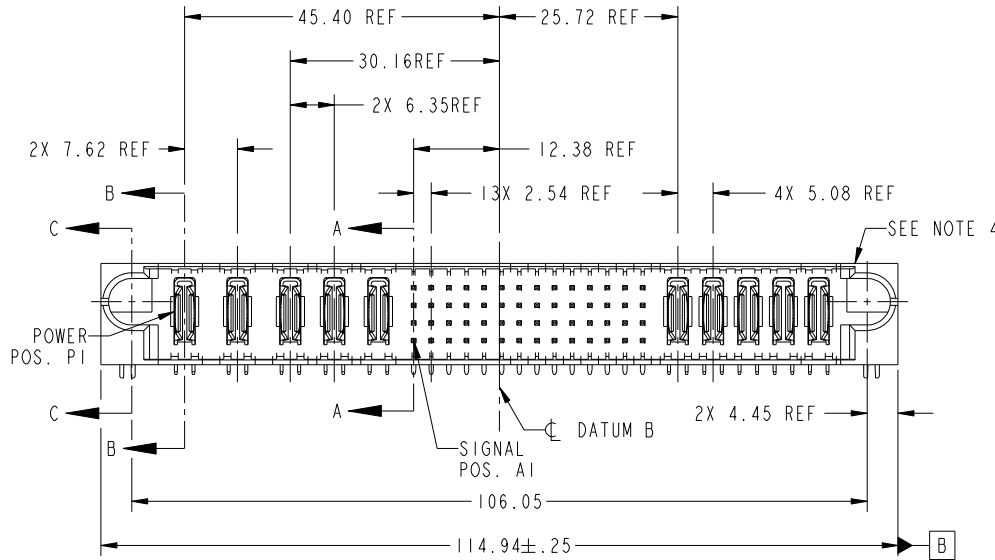
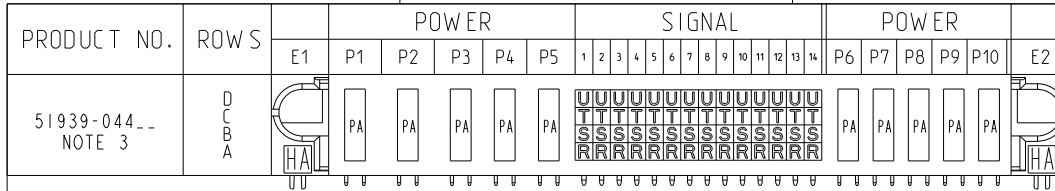


Tous droits strictement réservés. Reproduction ou communication a des tiers interdite sous quelque forme que ce soit sans autorisation écrite du propriétaire. Propriété de c FCI. Droits de reproduction FCI.

All rights strictly reserved. Reproduction or issue to third parties in any form whatever is not permitted without written authority from the proprietor. Property of FCI. Copyright FCI.



CODE	DIM "M" MATING LENGTH	CONTACT TYPE
U	[6.86]	SIGNAL
T	[6.86]	SIGNAL
S	[6.86]	SIGNAL
R	[6.86]	SIGNAL
PA	[N/A]	POWER
HA	[N/A]	HOLD-DOWN

mat'l code				SEE NOTE		tolerances unless otherwise specified		CUSTOMER	
ltr	ecn no.	dr	date	linear	0.X ± 0.3	projection	COPY		
A	V03-0154	TAB	02/05/03	angles	0.XX ± 0.13		title		
B	DG07-0441	JULIA	11/05/07		0.XXX ± 0.051		3ACP + 2P + 56S + 5P		
C	DG08-0273	WD	12/30/08		0° ± 2°			product family	
				dr	T. BRUNGARD	02/05/03	PwrBlade		code
				enrg	M. MOSTOLLER	02/05/03	size	213	
				chr	M. MOSTOLLER	02/05/03	dwg no	1 of 4	
				appd	JOSEPH HSIA	02/05/03	scale	1:1	
sheet index	revision sheet	C	C	C	C				
		1	2	3	4				

		www.fciconnect.com	
title			
3ACP + 2P + 56S + 5P			
RIGHT ANGLE SOLDER HEADER			
product family		code	
PwrBlade		213	
size	dwg no		sheet
A	51939-044		1 of 4
cage code			
22526			

Pro/E

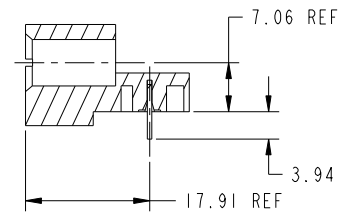
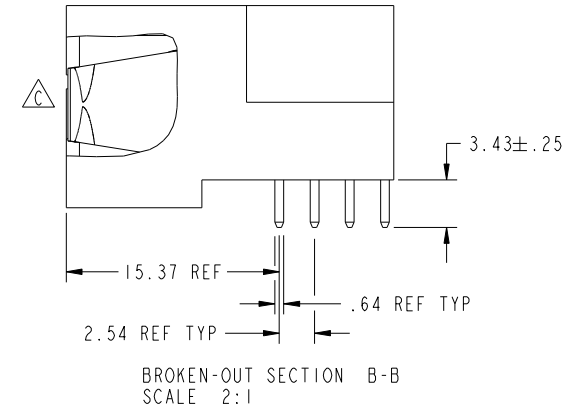
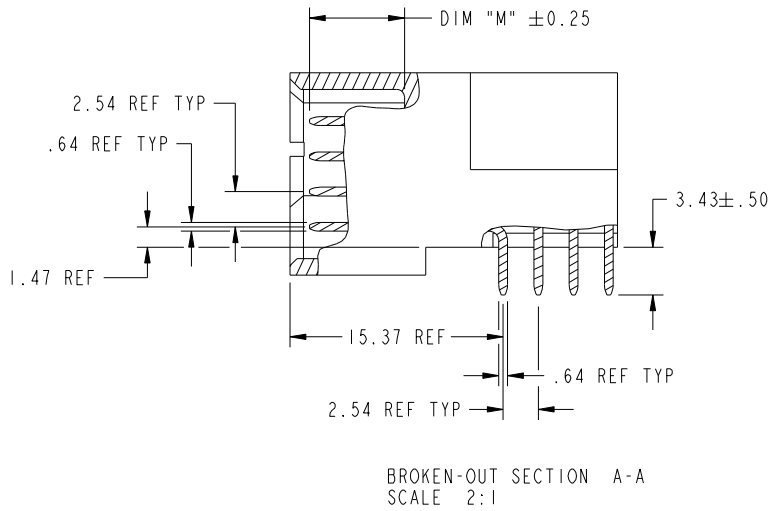
cage code 22526

Tous droits strictement reserves. Reproduction ou communication a des tiers interdite sous quelque forme que ce soit sans autorisation ecrite du proprietaire. Propriete de c FCI. Droits de reproduction FCI.

All rights strictly reserved. Reproduction or issue to third parties in any form whatever is not permitted without written authority from the proprietor. Property of FCI. Copyright FCI.



PRODUCT NUMBER  
51939-044\_\_  
NOTE: 3



mat'l code		SEE NOTE		tolerances unless otherwise specified		CUSTOMER		 www.fciconnect.com	
ltr	ecn no.	dr	date	linear	0.X ±0.3	COPY		title	
C					0.XX ±0.13	projection		3ACP + 2P + 56S + 5P	
				angles	0.XXX ±0.051			RIGHT ANGLE SOLDER HEADER	
				dr	0° +2°	MIM		product family PwrBlade code	
				enrg	T. BRUNGARD 02/05/03			size	
				chr	M. MOSTOLLER 02/05/03	scale		dwg no	
				appd	M. MOSTOLLER 02/05/03	1:1		A 51939-044	
					JOSEPH HSIA 02/05/03			sheet	
sheet index	revision sheet							2 of 4	

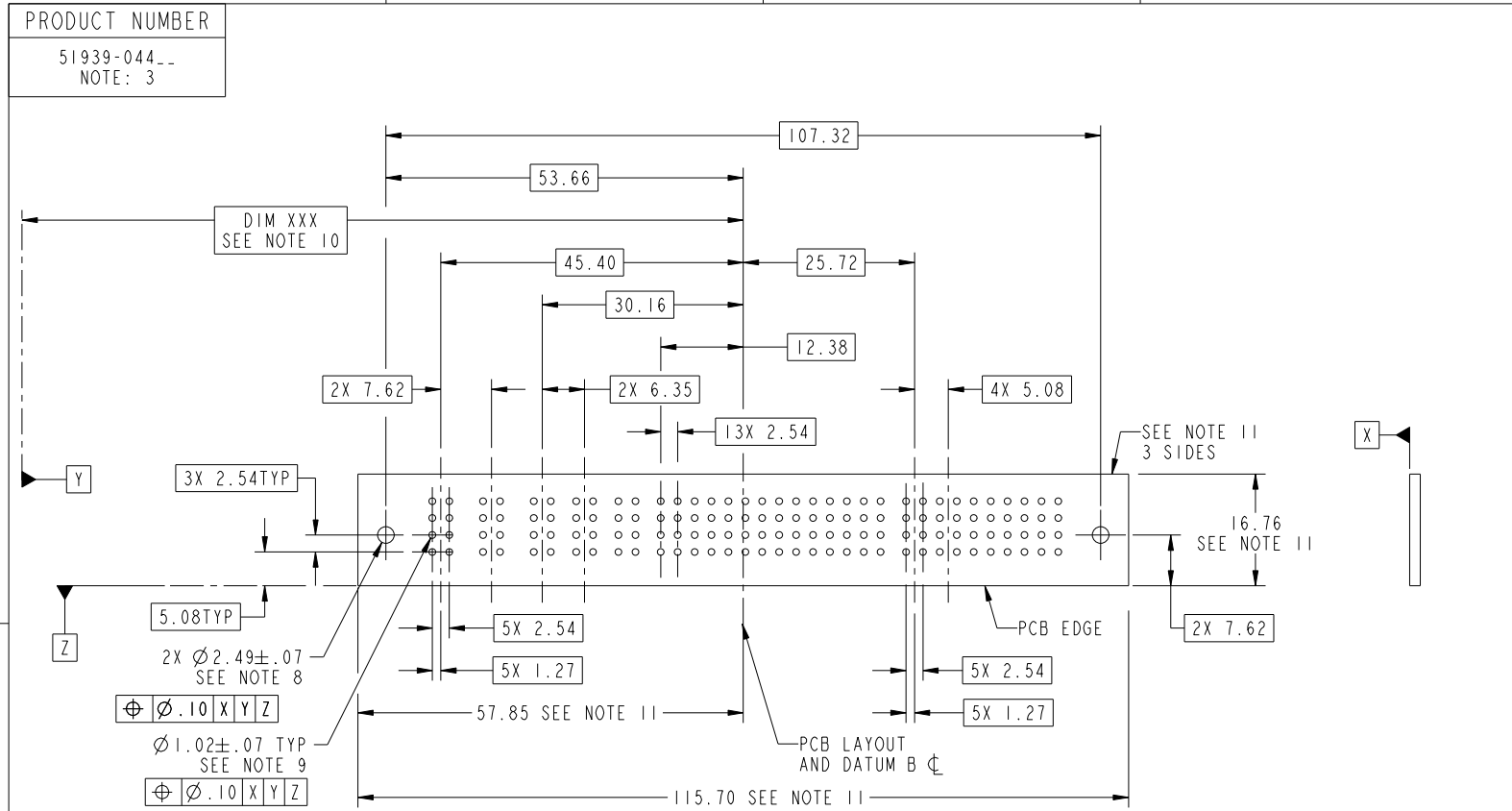
cage code 22526

Pro/E

Tous droits strictement reserves. Reproduction ou communication a des tiers interdite sous quelque forme que ce soit sans autorisation ecrite du proprietaire. Propriete de c FCI. Droits de reproduction FCI.



All rights strictly reserved. Reproduction or issue to third parties in any form whatever is not permitted without written authority from the proprietor. Property of FCI. Copyright FCI.



RECOMMENDED PCB LAYOUT

mat'l code		SEE NOTE		tolerances unless otherwise specified		CUSTOMER		 www.fciconnect.com	
ltr	ecn no.	dr	date	linear	0.X ± 0.3	COPY		title	
C					0.XX ± 0.13	projection		3ACP + 2P + 56S + 5P	
				angles	0.XXX ± 0.051			RIGHT ANGLE SOLDER HEADER	
				dr	0° ± 2°	MIM		product family PwrBlade code	
				enrg	T. BRUNGARD 02/05/03	scale		213	
				chr	M. MOSTOLLER 02/05/03	1:1		size	
				appd	M. MOSTOLLER 02/05/03	A		dwg no	
					JOSEPH HSIA 02/05/03			51939-044	
sheet index	revision sheet							sheet 3 of 4	

cage code 22526

Tous droits strictement reserves. Reproduction ou communication a des tiers interdite sous quelque forme que ce soit sans autorisation écrite du propriétaire. Propriete de c FCI. Droits de reproduction FCI.



All rights strictly reserved. Reproduction or issue to third parties in any form whatever is not permitted without written authority from the proprietor. Property of FCI. Copyright FCI.

PRODUCT NUMBER  
51939-044\_\_  
NOTE: 3

NOTES:

1. DIMENSIONS AND TOLERANCES ARE IN ACCORDANCE WITH ASME Y14.5M, 1994 UNLESS OTHERWISE SPECIFIED.

CONNECTOR NOTES:

- 2. HOUSING MATERIAL: UL 94 V-0 GLASS FILLED HIGH-TEMP THERMOPLASTIC  
POWER CONTACT MATERIAL: COPPER ALLOY  
SIGNAL PIN MATERIAL: COPPER ALLOY

3. SEE ITEM 1 & 2 IN PRINT 10064183 FOR PLATING SPEC OF 51939-044 AND 51939-044LF RESPECTIVELY.

- 4. MANUFACTURER'S NAME, P/N, AND DATE CODE TO APPEAR ON THIS SURFACE.

5. PRODUCT SPECIFICATION GS-12-149.  
APPLICATION SPECIFICATION BUS-20-067.

6. PACKAGED IN TRAYS.

PCB NOTES:

7. ALL HOLE DIAMETERS ARE FINISHED HOLE SIZE.

- 8. MOUNTING HOLES, WHERE APPLICABLE, ARE UNPLATED.

- 9.  $\varnothing 1.151 \pm 0.025$  DRILLED HOLES PLATED WITH  
0.008 MIN SnPb OR Sn OVER 0.03  
TO 0.08 Cu PLATING TO ACHIEVE  
 $\varnothing 1.02 \pm .07$  HOLE.

- 10. "DIM XXX" TO BE DETERMINED BY THE CUSTOMER.

- 11. CONNECTOR KEEP-OUT ZONE.

12. A  $\triangle$  SYMBOL WILL BE NEXT TO ANY DIMENSION, VIEW, OR NOTE WHICH HAS BEEN MODIFIED WITH THE CURRENT DRAWING REVISION.

mat'l code				SEE NOTE		tolerances unless otherwise specified		CUSTOMER		FCI	
ltr	ecn no.	dr	date	linear		0.X ± 0.3	COPY		www.fciconnect.com		
C						0.XX ± 0.13	projection		title 3ACP + 2P + 56S + 5P RIGHT ANGLE SOLDER HEADER		
				angles		0.XXX ± 0.051			product family PwrBlade code 213		
				dr	T. BRUNGARD	02/05/03	MIM		size		sheet 4 of 4
				enrg	M. MOSTOLLER	02/05/03			dwg no		
				chr	M. MOSTOLLER	02/05/03	scale		A 51939-044		
				appd	JOSEPH HSIA	02/05/03	1:1				
sheet index	revision sheet										

cage code 22526

Pro/E