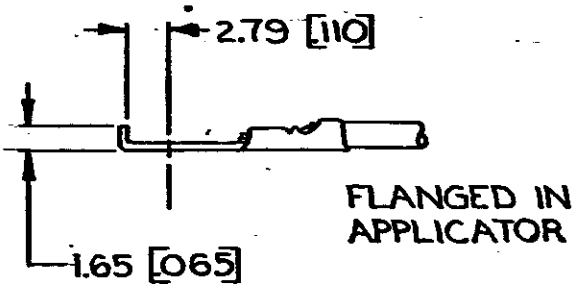
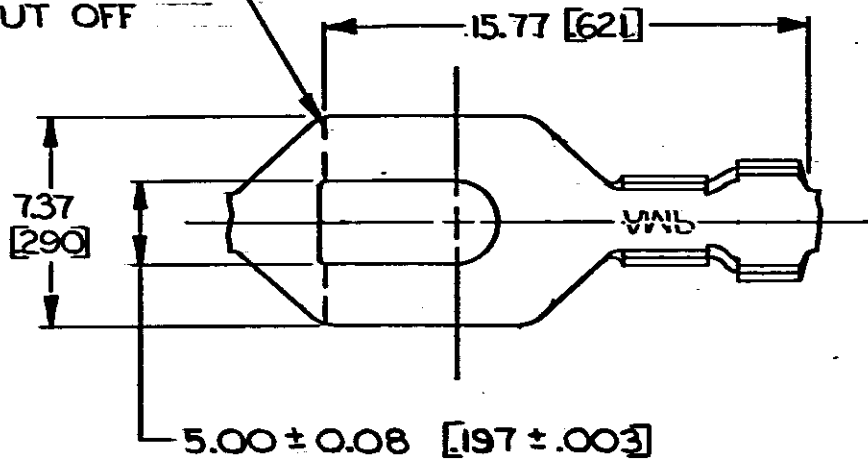


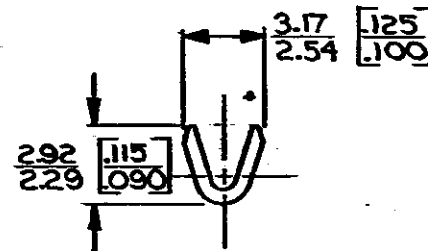
© COPYRIGHT 1964 BY AMP INCORPORATED, HARRISBURG, PA.
 ALL INTERNATIONAL RIGHTS RESERVED. AMP INCORPORATED PRODUCTS
 COVERED BY U. S. AND FOREIGN PATENTS AND/OR PATENTS PENDING.

REVISIONS						
P	F	ZONE	LTR	DESCRIPTION	DATE	APPROVED
✓	2		L	REDRAWN & REVISED A-3943	5-15-78	SS/

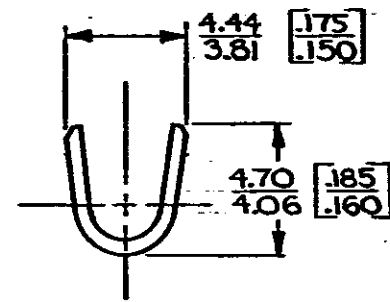
APPLICATOR
CUT OFF



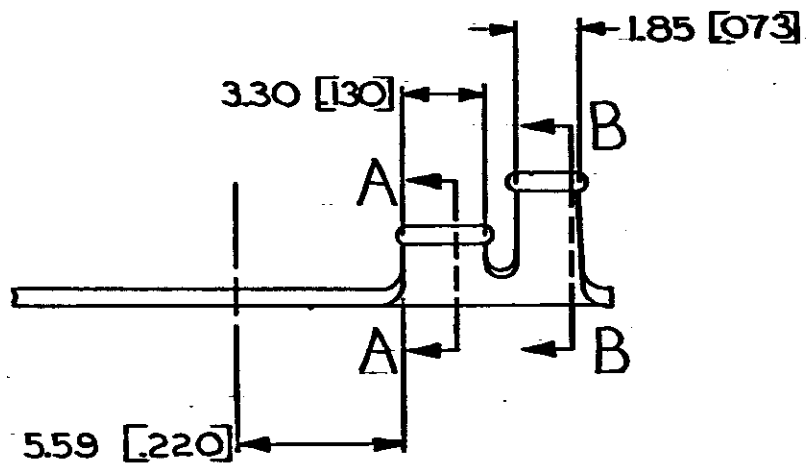
FLANGED IN
APPLICATOR



SECT. A-A



SECT. B-B



*10	0.2-0.6 mm ² [24-20]	203-2.54 [080-.100]	TIN	0.51 [020] BRASS	41590 A
STUD SIZE	WIRE RANGE	INSULATION RANGE	FINISH	MATERIAL	41590
					PART NO

- CONTINUOUS STRIP ON REELS.
- DIMENSIONS IN BRACKETS ARE IN INCHES.
- SUFFIX LETTER MUST BE USED ONLY WHEN ORDERING APPLICATOR TOOLING.

METRIC

UNLESS OTHERWISE SPECIFIED DIMENSIONS ARE IN INCHES mm TOLERANCES ON: DECIMALS ±0.33 [015] ANGLES ±1°	CONTRACT NO	AMP INCORPORATED Harrisburg, Pa.	
MATERIAL	DR J. Magano 5-15-78	NAME SPADE	
SEE TABLE	CHK J. Hoffmann 7-25-78	SIZE B	CODE IDENT NO 00779
FINISH	APPD R.P. Hunt 8-1-78	DRAWING NO 41590	SHEET
SEE TABLE	APPD G. T. Hicks 8-1-78	SCALE	
	DSGN APPD		
	OTHER APPD		