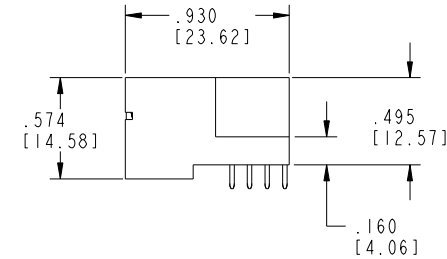
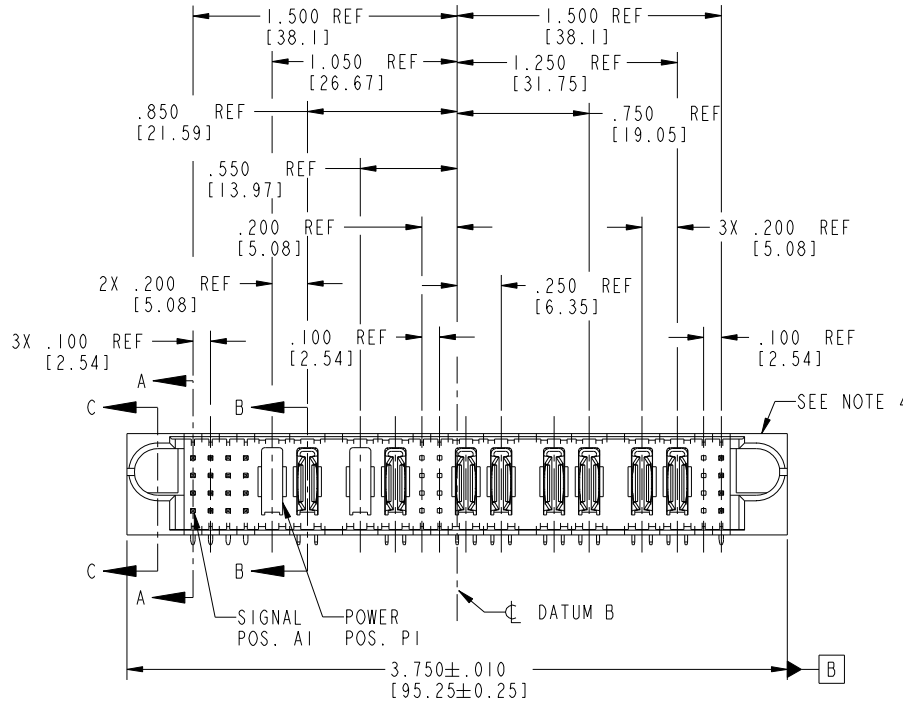


Tous droits strictement réservés. Reproduction ou communication à des tiers interdite sous quelque forme que ce soit sans autorisation écrite du propriétaire. Propriété de c FCI. Droits de reproduction FCI.



All rights strictly reserved. Reproduction or issue to third parties in any form whatever is not permitted without written authority from the proprietor. Property of FCI. Copyright FCI.

PRODUCT NO.	ROWS	1 2				3										4						
		E1	1	2	3	4	P1	P2	P3	P4	SIG	5	6	P5	P6	P7	P8	P9	P10	7	8	E2
51939-122... NOTE 3	D C B A	UUUU TTTT SSSS RRRR				X	PA	X	PA	X X X X	PA	PA	PA	PA	PA	PA	PA	PA	PA	PA	X X X X	T S S R



CODE	DIM "M" MATING LENGTH	CONTACT TYPE
H	.220 [5.59]	SIGNAL
R	.270 [6.86]	SIGNAL
S	.270 [6.86]	SIGNAL
T	.270 [6.86]	SIGNAL
U	.270 [6.86]	SIGNAL
PA	N/A [N/A]	POWER
X	OMITTED	OMITTED

mat'l code				SEE NOTE 2		tolerances unless otherwise specified		CUSTOMER	
ltr	ecn no.	dr	date	linear	.XX±.01/0.X±0.3	COPY		FCI	
A	V04-0546	TAB	05/25/04		.XXX±.005/0.XX±0.13	projection		www.fciconnect.com	
B	DG06-0013	RYAN	01/11/06		.XXX±.002/0.XXX±0.051	INCH/MM		title 16S + 4P + 8S + 6P + 8S RIGHT ANGLE SOLDER HEADER	
C	DG09-0003	WD	02/12/09	angles	0°±2°	scale		product family PwrBlade code 213	
				dr	T. BRUNGARD 05/25/04	1:1		size dwg no 51939-122 sheet 1 of 4	
				enr	M. GRAY 05/25/04				
				chr	M. GRAY 05/25/04				
				appd	M. GRAY 05/25/04				
sheet index	revision sheet	C	C	C	C			cage code 22526	
		1	2	3	4				

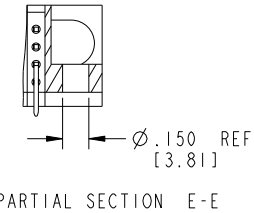
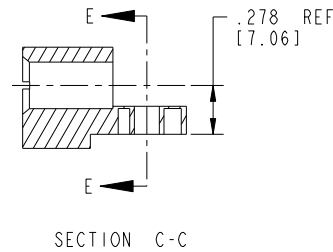
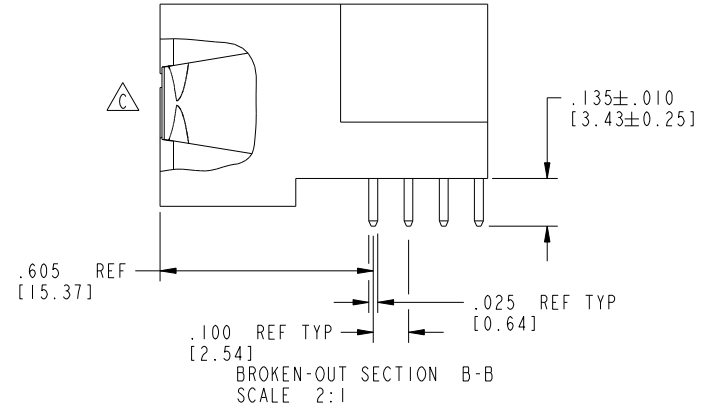
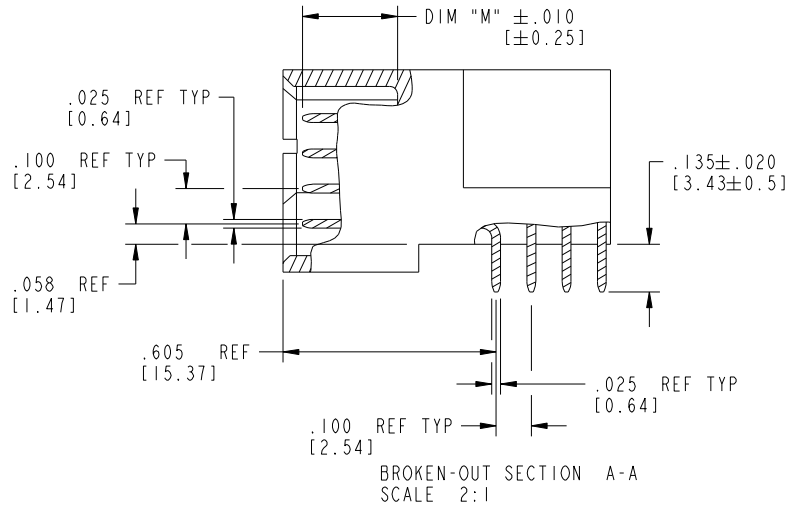
Pro/E

cage code 22526

Tous droits strictement réservés. Reproduction ou communication à des tiers interdite sous quelque forme que ce soit sans autorisation écrite du propriétaire. Propriété de c.FCI. Droits de reproduction FCI.

All rights strictly reserved. Reproduction or issue to third parties in any form whatsoever is not permitted without written authority from the proprietor. Property of FCI. Copyright FCI.

PRODUCT NUMBER
51939-122--
NOTE 3



mat'l code		SEE NOTE 2		tolerances unless otherwise specified		CUSTOMER		FCI	
ltr	ecn no.	dr	date	linear	.XX±.01/0.X±0.3	COPY		www.fciconnect.com	
C					.XXX±.005/0.XX±0.13	projection		title 16S + 4P + 8S + 6P + 8S RIGHT ANGLE SOLDER HEADER	
				angles	.XXX±.0020/0.XXX±0.051	INCH/MM		product family PwrBlade code 213	
				dr	0°±2°	scale		size dwg no 213	
				enr	T. BRUNGARD 05/25/04	1:1		sheet 2 of 4	
				chr	M. GRAY 05/25/04			A 51939-122	
				appd	M. GRAY 05/25/04			cage code 22526	
sheet index	revision sheet								

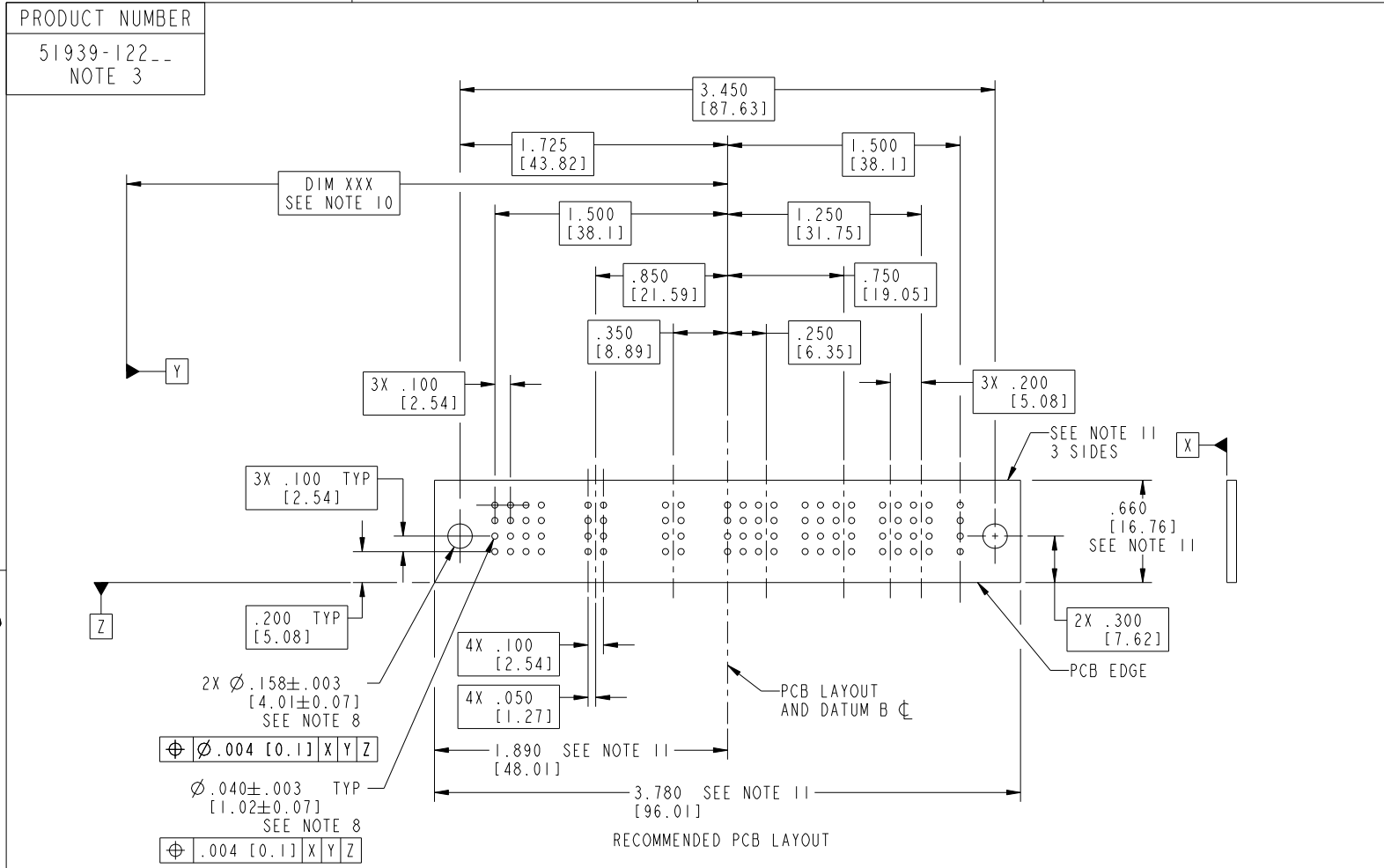
Pro/E

cage code 22526

Tous droits strictement reserves. Reproduction ou communication a des tiers interdite sous quelque forme que ce soit sans autorisation ecrite du propriétaire. Propriete de c FCI. Droits de reproduction FCI.



All rights strictly reserved. Reproduction or issue to third parties in any form whatever is not permitted without written authority from the proprietor. Property of FCI. Copyright FCI.



$\varnothing .004 [0.1] X Y Z$
$\varnothing .040 \pm .003 [1.02 \pm 0.07] TYP$
$\varnothing .004 [0.1] X Y Z$

mat'l code		SEE NOTE 2		tolerances unless otherwise specified		CUSTOMER		FCI		www.fciconnect.com	
lfr	ecn no.	dr	date	linear	$.XX \pm .01 / 0.X \pm 0.3$	COPY		projection		title 16S + 4P + 8S + 6P + 8S RIGHT ANGLE SOLDER HEADER	
C				angles	$.XXX \pm .005 / 0.XX \pm 0.13$	INCH/MM		product family		code	
				dr	$.XXX \pm .0020 / 0.XXX \pm 0.051$	scale		PwrBlade		213	
				enr	$0^\circ \pm 2^\circ$	1:1		size		sheet	
				chr	T. BRUNGARD 05/25/04			dwg no		3 of 4	
				appd	M. GRAY 05/25/04			A 51939-122			
					M. GRAY 05/25/04						
sheet index	revision sheet										

cage code 22526

Tous droits strictement reserves. Reproduction ou communication a des tiers interdite sous quelque forme que ce soit sans autorisation écrite du propriétaire. Propriete de c FCI. Droits de reproduction FCI.

All rights strictly reserved. Reproduction or issue to third parties in any form whatever is not permitted without written authority from the proprietor. Property of FCI. Copyright FCI.

PRODUCT NUMBER
51939-122--
NOTE 3

NOTES:

1. DIMENSIONS AND TOLERANCES ARE IN ACCORDANCE WITH ASME Y14.5M, 1994 UNLESS OTHERWISE SPECIFIED.

CONNECTOR NOTES:

- 2. HOUSING MATERIAL: UL 94 V-0 GLASS FILLED HIGH-TEMP THERMOPLASTIC
POWER CONTACT MATERIAL: COPPER ALLOY
SIGNAL PIN MATERIAL: COPPER ALLOY
 - 3. SEE ITEM 1 & 2 IN PRINT 10064183 FOR PLATING SPEC OF 51939-122 AND 51939-122LF RESPECTIVELY.
 - 4. MANUFACTURER'S NAME, P/N, AND DATE CODE TO APPEAR ON THIS SURFACE.
 - 5. PRODUCT SPECIFICATION GS-12-149.
APPLICATION SPECIFICATION BUS-20-067.
 - 6. PACKAGED IN TRAYS.
- PCB NOTES:
- 7. ALL HOLE DIAMETERS ARE FINISHED HOLE SIZE.
 - 8. MOUNTING HOLES, WHERE APPLICABLE, ARE UNPLATED.
 - 9. $\varnothing .0453 \pm .0010$ [1.151 \pm 0.025] DRILLED HOLES PLATED WITH
.0003 [0.008] MIN SnPb OVER .001 [0.03]
TO .003 [0.08] Cu PLATING TO ACHIEVE
 $\varnothing .040 \pm .003$ [1.02 \pm .07] HOLE.
 - 10. "DIM XXX" TO BE DETERMINED BY THE CUSTOMER.
 - 11. CONNECTOR KEEP-OUT ZONE.
 - 12. A \triangle SYMBOL WILL BE NEXT TO ANY DIMENSION, VIEW, OR NOTE WHICH HAS BEEN MODIFIED WITH THE CURRENT DRAWING REVISION.

mat'l code		SEE NOTE 2		tolerances unless otherwise specified		CUSTOMER		FCJ	
ltr	ecn no.	dr	date	linear	.XX±.01/0.X±0.3	COPY		www.fciconnect.com	
C				linear	.XXX±.005/0.XX±0.13	projection		title 16S + 4P + 8S + 6P + 8S RIGHT ANGLE SOLDER HEADER	
				linear	.XXX±.002/0.XXX±0.051				
				angles	0°±2°			product family PwrBlade code 213	
				dr	T. BRUNGARD 05/25/04	scale		size dwg no 213	
				enr	M. GRAY 05/25/04	1:1		sheet 4 of 4	
				chr	M. GRAY 05/25/04				
				appd	M. GRAY 05/25/04				
sheet index	revision sheet								

cage code 22526