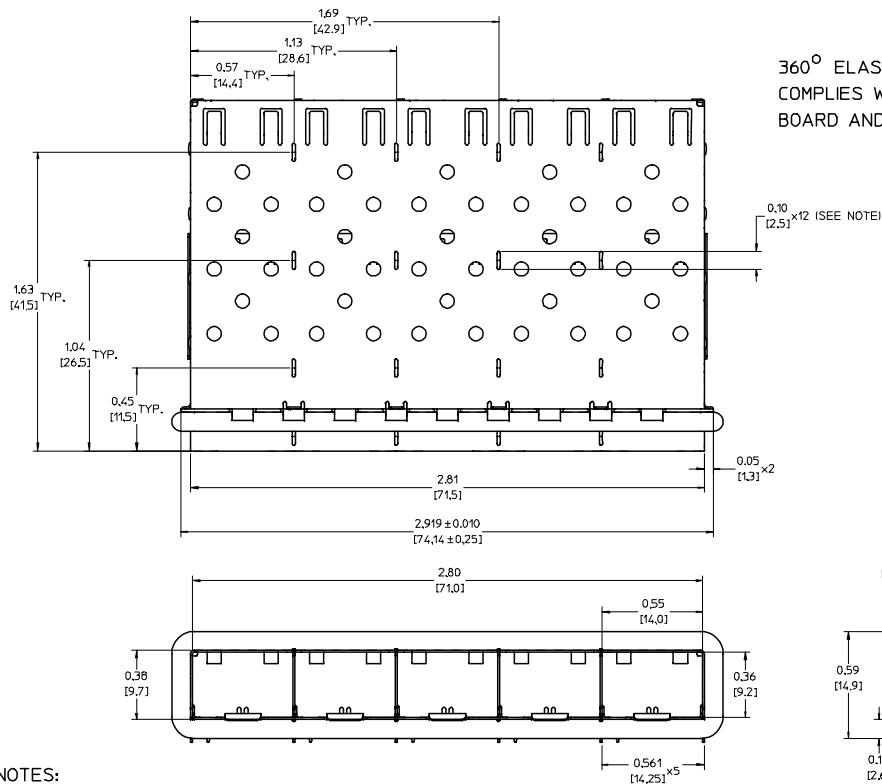


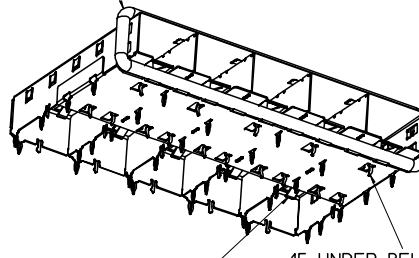
20 19 18 17 16 15 14 13 12 11 10 9 8 7 6 5 4 3 2 1



360° ELASTOMER EMI GASKET COMPLIES WITH (SFP) MSA BOARD AND BEZEL LOCATIONS

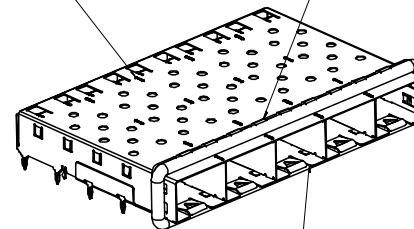
GASKET SEAM LOCATED ON TOP OF CAGE

INNER WALL TABS ARE COINED OVER BASE AND COVER FOR RIGIDITY

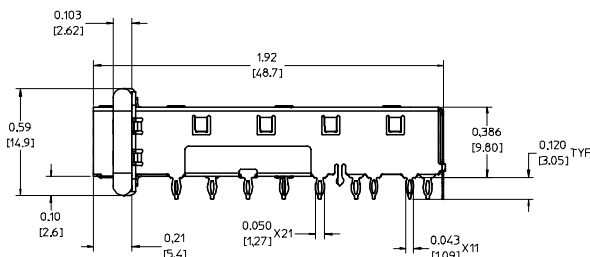


EMI FINGERS CONTACT ADAPTER

15 UNDER BELLY EMI PINS



DIMENSIONS OF EACH INNER CAGE DESIGNED TO FUNCTION WITH SMALL FORM-FACTOR PLUGGABLE (SFP) TRANSCEIVER



NOTES:

- PRESS FIT LEGS .120" LONG-
0.062 [1.57] MINIMUM PCB THICKNESS FOR SINGLE SIDED USE ONLY.
THIS CAGE IS NOT DESIGNED FOR USE IN BELLY-TO-BELLY APPLICATIONS.
- MATERIAL: COPPER ALLOY
PLATING: PRE-PLATED NICKEL
- REFERENCE DOCUMENTS:
PRODUCT SPECIFICATIONS: PS-74728-000
COSMETIC SPECIFICATIONS: WI-HP-7-2774 ADN WI-HPA-7-0093
- MATES WITH SERIES 74729, LIGHT PIPE COVER ASSEMBLY.
- THIS PART MEETS THE RESTRICTION OF HAZARDOUS SUBSTANCES IN ELECTRICAL AND ELECTRONIC EQUIPMENT (ROHS) DIRECTIVE (2002/95/EC).

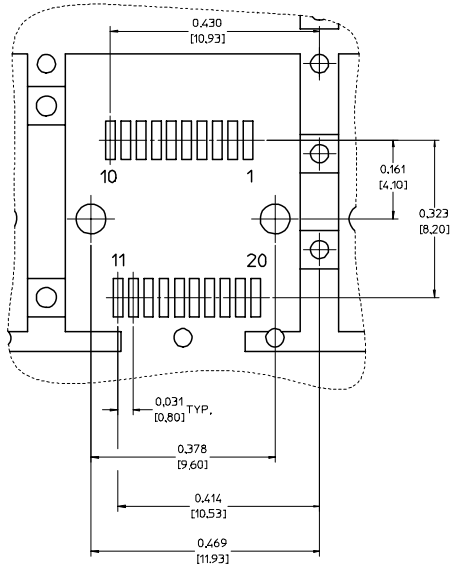
ENTER DESCRIPTION EC NO: UST2006-026 DRINKS MONSON 2006/01/18 CHK: BRUSSELL 2006/01/28 APPR: BRUSSELL 2006/01/28	QUALITY SYMBOLS	GENERAL TOLERANCES (UNLESS SPECIFIED)	DIMENSION STYLE	SCALE	DESIGN UNITS	THIRD ANGLE PROJECTION
	▽=0 ▽=0	mm INCH 4 PLACES ± --- ± --- 3 PLACES ± --- ± .005 2 PLACES ± 0.13 ± .01 1 PLACE ± 0.25 ± --- ANGULAR ± 1 °	IN/MM	3:1	METRIC	DRAWN BY DATE KS IMONSO 2005/10/22 CHECKED BY DATE BRUSSELL 2005/10/22 APPROVED BY DATE BRUSSELL 2005/10/22
	DRAFT WHERE APPLICABLE MUST REMAIN WITHIN DIMENSIONS	MATERIAL NO. 747230004	DOCUMENT NO. SD-74723-004	TITLE 1X5 SFP GANGED CAGE ASSY, FRAME W/ TABS, PRE-PLATED		
	SIZE D	THIS DRAWING CONTAINS INFORMATION THAT IS PROPRIETARY TO MOLEX INCORPORATED AND SHOULD NOT BE USED WITHOUT WRITTEN PERMISSION			MOLEX INCORPORATED	

19 18 17 16 15 14 13 12 11 10 9 8 7 6 5 4 3 2 1

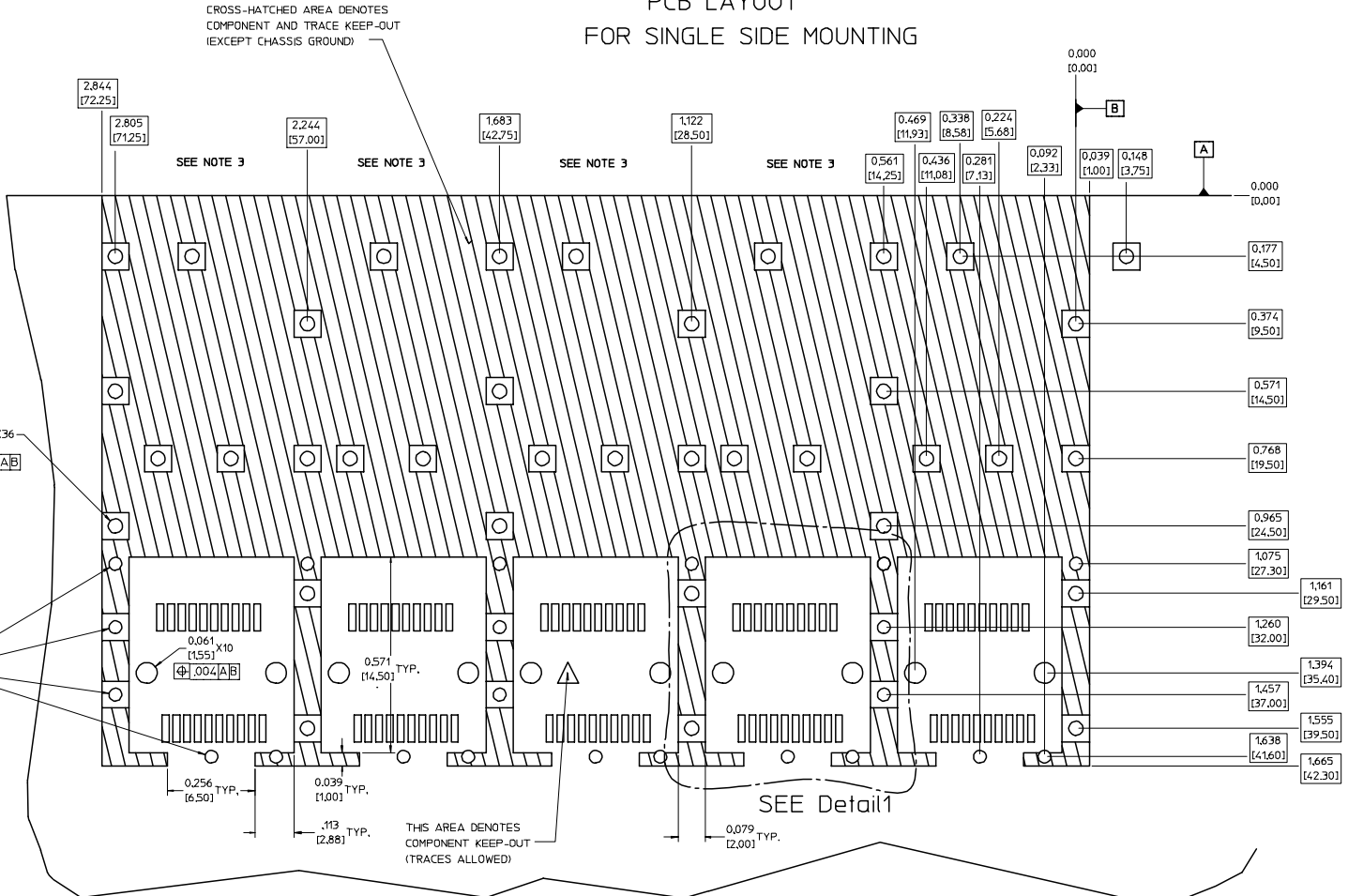
20 19 18 17 16 15 14 13 12 11 10 9 8 7 6 5 4 3 2 1

M L K J I H G F E D C B A

Detail1
SCALE 8:1



PCB LAYOUT
FOR SINGLE SIDE MOUNTING

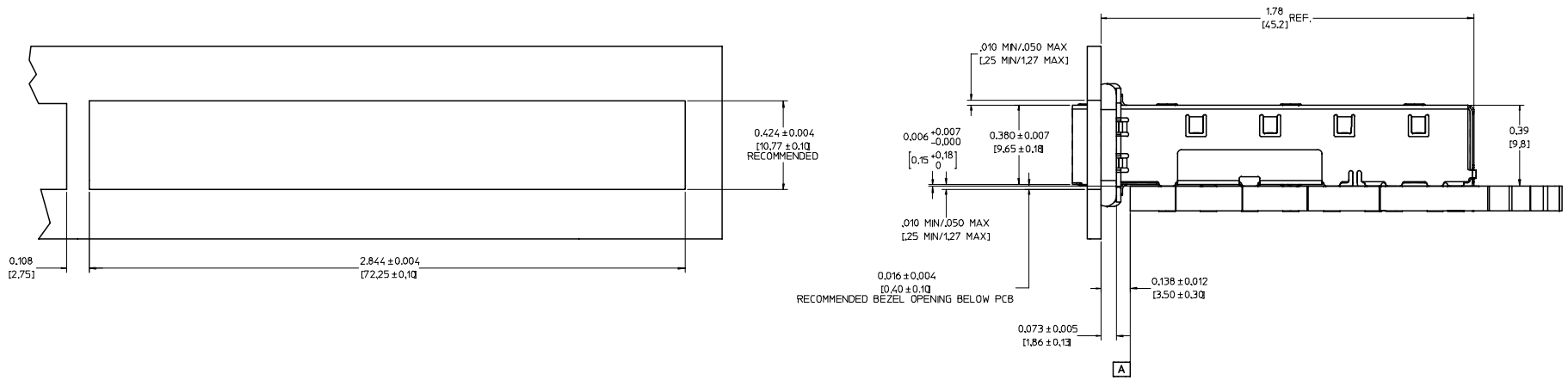


- NOTES:
1. PADS AND VIAS GO TO CHASSIS GROUND, (42 PLACES).
RECOMMENDED PADS TO BE 2mm SQUARE.
 2. PLATING OPTIONAL FOR THROUGH HOLES, (16 PLACES).
 3. RECOMMENDED PLATING INCLUDES HASL, IMMERSION (GOLD, SILVER, OR TIN), AND OSP.
 4. HOLE PATTERN REPEATS FOR EACH PORT,
SPACING BETWEEN PORTS IS 0.561[14.25].
 5. CONNECTOR PAD LAYOUT PER SFP MSA. WILL ACCOMODATE MOLEX
CONNECTOR SERIES 74441 OR EQUIVALENT.

ENTER DESCRIPTION EC NO: UST2006-02/6 DRWKS:RMONSON 2006/01/18 CHKCD:BRUSSELL 2006/01/28 APPR:BRUSSELL 2006/01/25 A	QUALITY SYMBOLS ▽=0 ▽=0	GENERAL TOLERANCES (UNLESS SPECIFIED) <table border="1"> <tr> <th></th> <th>mm</th> <th>INCH</th> </tr> <tr> <td>4 PLACES ±</td> <td>±.005</td> <td>±.0005</td> </tr> <tr> <td>3 PLACES ±</td> <td>±.005</td> <td>±.0005</td> </tr> <tr> <td>2 PLACES ±</td> <td>±.013</td> <td>±.001</td> </tr> <tr> <td>1 PLACE ±</td> <td>±.025</td> <td>±.001</td> </tr> <tr> <td>ANGULAR ±</td> <td>± 1°</td> <td></td> </tr> </table>		mm	INCH	4 PLACES ±	±.005	±.0005	3 PLACES ±	±.005	±.0005	2 PLACES ±	±.013	±.001	1 PLACE ±	±.025	±.001	ANGULAR ±	± 1°		DIMENSION STYLE IN/MM	SCALE 6:1	DESIGN UNITS METRIC	THIRD ANGLE PROJECTION
		mm	INCH																					
	4 PLACES ±	±.005	±.0005																					
	3 PLACES ±	±.005	±.0005																					
2 PLACES ±	±.013	±.001																						
1 PLACE ±	±.025	±.001																						
ANGULAR ±	± 1°																							
DRAWN BY KS IMONSO	DATE 2005/10/22	CHECKED BY BRUSSELL	DATE 2005/10/22	TITLE 1X5 SFP GANGED CAGE ASSY, FRAME W/ TABS, PRE-PLATED																				
APPROVED BY BRUSSELL	DATE 2005/10/22	MATERIAL NO. 747230004			DOCUMENT NO. SD-74723-004	SHEET NO. 2 OF 4																		
DRAFT WHERE APPLICABLE MUST REMAIN WITHIN DIMENSIONS		THIS DRAWING CONTAINS INFORMATION THAT IS PROPRIETARY TO MOLEX INCORPORATED AND SHOULD NOT BE USED WITHOUT WRITTEN PERMISSION																						

1b_Frame_D_P_Am_T Rev. D 2004/06/28 19 18 17 16 15 14 13 12 11 10 9 8 7 6 5 4 3 2 1

BEZEL AND BOARD POSITION DIMENSIONS FOR SINGLE SIDE MOUNTING



ENTER DESCRIPTION EC NO: UST2006-0216 DRAWN BY: DRWNS/IMONSON 2006/01/18 CHECKED BY: CHKCB/BRUSSELL 2006/01/28 APPR: BRUSSELL 2006/01/28 A	QUALITY SYMBOLS ▽=0 ▽=0	GENERAL TOLERANCES (UNLESS SPECIFIED)		DIMENSION STYLE IN/MM		SCALE 4:1	DESIGN UNITS METRIC	THIRD ANGLE PROJECTION
		4 PLACES ± --- ± --- 3 PLACES ± --- ± .005 2 PLACES ± 0.13 ± .01 1 PLACE ± 0.25 ± --- ANGULAR ± 1 °	mm INCH	DRAWN BY KS IMONSON DATE 2005/10/22	CHECKED BY BRUSSELL DATE 2005/10/22	TITLE 1X5 SFP GANGED CAGE ASSY, FRAME W/ TABS, PRE-PLATED		MATERIAL NO. 747230004
DRAFT WHERE APPLICABLE MUST REMAIN WITHIN DIMENSIONS		THIS DRAWING CONTAINS INFORMATION THAT IS PROPRIETARY TO MOLEX INCORPORATED AND SHOULD NOT BE USED WITHOUT WRITTEN PERMISSION						

20 19 18 17 16 15 14 13 12 11 10 9 8 7 6 5 4 3 2 1

M

M

L

L

K

K

J

J

I

I

H

H

G

G

F

F

E

E

D

D

C

C


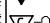


B

B

A

A

DATE	REV	CHANGES	COMMENTS
2005/06/09	1	PRELIMINARY DOCUMENT	N/A
2005/10/22	A	INITIAL RELEASE	N/A

ENTER DESCRIPTION EC NO: UST2006-02/6 DRWNS: MONSON 2006/01/18 CHKD: BRUSSELL 2006/01/28 APPR: BRUSSELL 2006/01/28 A	QUALITY SYMBOLS  	GENERAL TOLERANCES (UNLESS SPECIFIED)		DIMENSION STYLE IN/MM		SCALE 1:1	DESIGN UNITS METRIC	 THIRD ANGLE PROJECTION	
		4 PLACES ± --- ± --- 3 PLACES ± --- ± .005 2 PLACES ± 0.13 ± .01 1 PLACE ± 0.25 ± ---	mm INCH	DRAWN BY KS IMONSO	DATE 2005/10/22	TITLE 1X5 SFP GANGED CAGE ASSY, FRAME W/ TABS, PRE-PLATED			
		ANGULAR ± 1 °		CHECKED BY BRUSSELL	DATE 2005/10/22	APPROVED BY BRUSSELL			DATE 2005/10/22
		DRAFT WHERE APPLICABLE MUST REMAIN WITHIN DIMENSIONS		MATERIAL NO. 747230004	DOCUMENT NO. SD-74723-004	 MOLEX INCORPORATED			SHEET NO. 4 OF 4

19 18 17 16 15 14 13 12 11 10 9 8 7 6 5 4 3 2 1