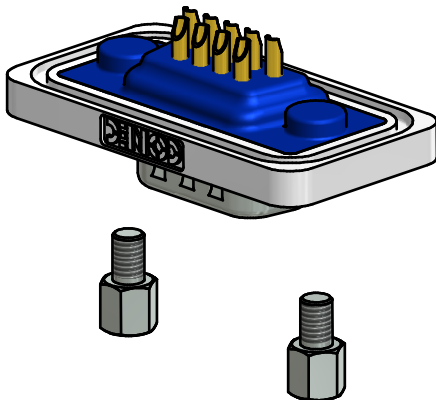
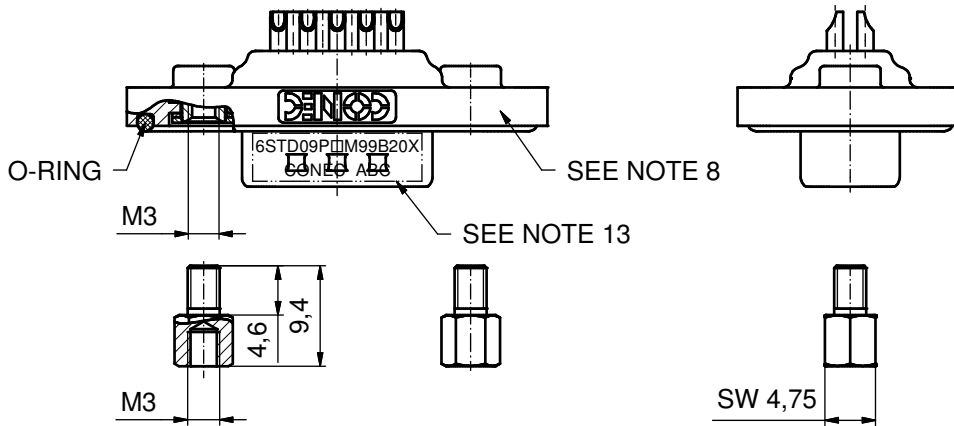
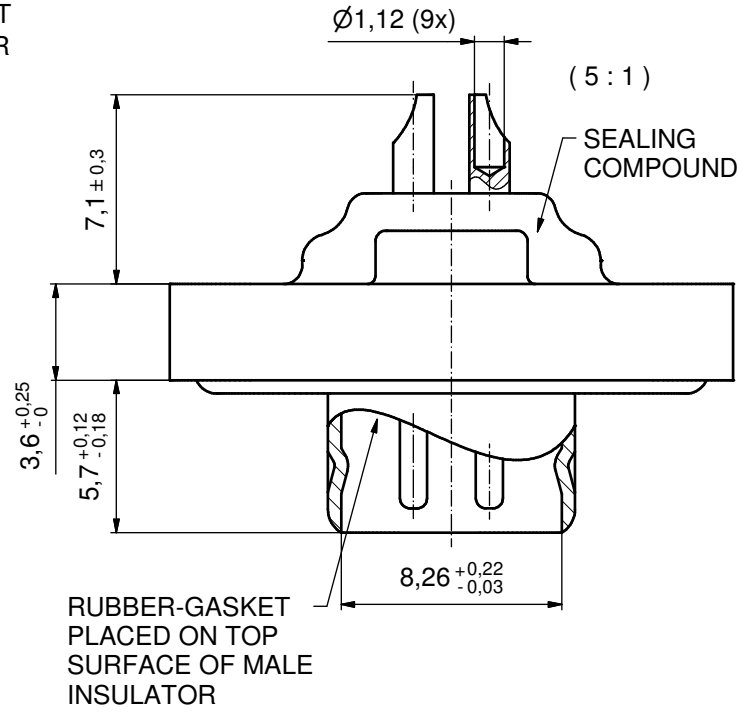
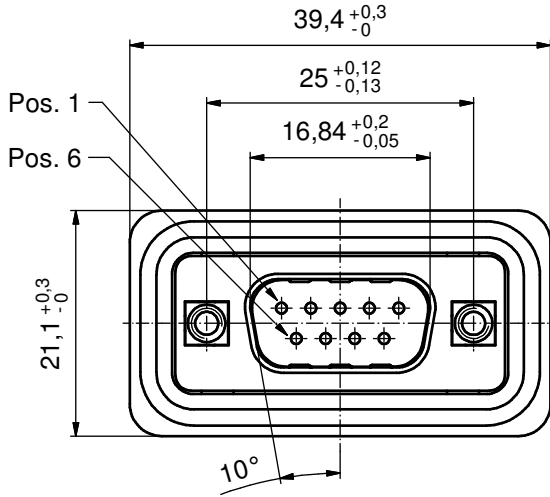


AT ALL TIMES WATER RESISTANT CONNECTORS NOT IN USE SHOULD BE COVERED WITH A CONEC WATER RESISTANT CAP OR WATER TIGHT HOOD.



NOTES:

1. RECOMMENDED SOLDER INSTRUCTION SEE SHEET 2
2. METALSHELLS: COPPER ALLOY; min. 315µm TIN over 40-80µm NICKEL
3. INSULATORS: PBT GF UL 94 V-0; BLACK
4. CONTACTS: COPPER ALLOY; PLATING (SEE PART NO.):
  - PLEASE ADD A for GOLD FLASH over NICKEL
  - PLEASE ADD B for 20µm HARD GOLD over min. 50µm NICKEL
  - PLEASE ADD C for 30µm HARD GOLD over min. 50µm NICKEL
5. THREADED INSERTS: COPPER ALLOY; min. 200µm TIN over 80µm NICKEL
6. COLLARS: COPPER ALLOY; min. 200µm TIN over 80µm NICKEL
7. HEXLOCKING SCREWS: STAINLESS STEEL
8. FRAME: ZINC DIE CAST; NICKEL PLATED
9. O-RING: SILICONE; BLUE
10. RUBBER GASKET: TPE; BLACK
11. RECOMMENDED PANEL CUT-OUT ON SHEET 2
12. RECOMMENDED TORQUE FOR MOUNTING SCREW 35Ncm (3.1 in.LB) / max. 40Ncm (3.5 in.LB)
13. CONNECTOR IS PART MARKED: 6STD09P□M99B20X CONEC ABC (see note 4)

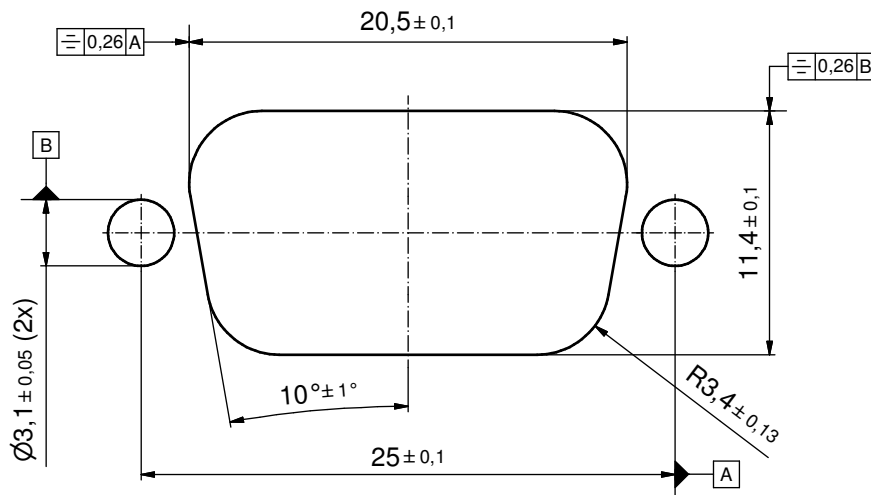
Directive 2002/95/EC RoHS compliant

|   |                |           |                                       |   |                     |
|---|----------------|-----------|---------------------------------------|---|---------------------|
| THIS DRAWING MAY NOT BE COPIED OR REPRODUCED IN ANY WAY, AND MAY NOT BE PASSED ON TO A THIRD PARTY WITHOUT WRITTEN PERMISSION. OWNERSHIP AND COPYRIGHT OF CONEC GmbH DO NOT ALTER CAD DRAWING BY HAND | tolerance      |           | dim. in mm                            |   | scale: 2:1 (5:1)    |
|   |                |           |                                       |   | material: SEE NOTES |
|   | date           | name      |                                       | title:  |                     |
|   | drawn 09.02.11 | Henneboel |                                       | D-SUB MALE<br>9pos. SOLDER CUP<br>with threaded insert and hexlocking screw |                     |
|   | appd. 10.02.11 | Fischer   |                                       |   |                     |
| norm  | d-old          |           | dwg no:                               | DIN-A3  |                     |
| 1 x b A5388 16.10.2014 K.H.   |                |           | 15K1A790                              | sh: 1/2   |                     |
| a Original  |                |           | part no: 6STD09P□M99B20X (see note 4) |   |                     |
| rev. description  | date           | name      |                                       |   |                     |

## Solder Instruction

1. Cable should be prepared for soldering. The cable/wires must be pretinned.
2. Insert cable/wire into solder cup.
3. Operate the soldering iron at 350 °C, 50 Watt max. and use a pencil tip.
4. Put tip to wire in solder cup.
5. After 1 second bring in solder.
6. Heat for 3 seconds longer. Do not heat contact more than 4 seconds in total.
7. Remove soldering iron.
8. Wait until solder gets rigid again.
9. Do not solder adjacent contacts consecutively, alternate position within the connector to minimize heat build up.

## RECOMMENDED PANEL CUT-OUT



|   |                                  |  |  |           |          |                       |
|---|----------------------------------|--|--|-----------|----------|-----------------------|
| THIS DRAWING MAY NOT BE COPIED OR REPRODUCED IN ANY WAY, AND MAY NOT BE PASSED ON TO A THIRD PARTY WITHOUT WRITTEN PERMISSION. OWNERSHIP AND COPYRIGHT OF CONEC GmbH DO NOT ALTER CAD DRAWING BY HAND |                                  |  |  | tolerance |          | scale: 2:1            |
|   |                                  |  |  | date      | name     | material: SEE SHEET 1 |
|   |                                  |  |  | drawn     | 09.02.11 | Henneboel             |
|   |                                  |  |  | appd.     | 10.02.11 | Fischer               |
|   |                                  |  |  | norm      |          |                       |
|   |                                  |  |  | d-old     |          |                       |
|   |                                  |  |  | rev.      |          |                       |
| dim. in mm  | title: RECOMMENDED PANEL CUT-OUT |  |  |           |          | DIN-A3                |
| D-SUB MALE 9pos. SOLDER CUP with threaded insert and hexlocking screw   |                                  |  |  |           |          |                       |
| dwg no: 15K1A790  |                                  |  |  |           | sh: 2/2  |                       |
| part no: SEE SHEET 1  |                                  |  |  |           |          |                       |