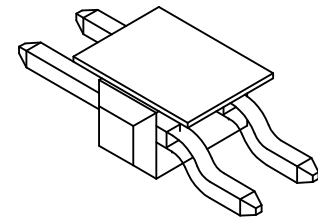
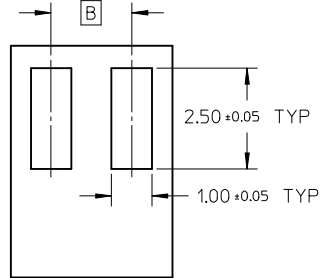
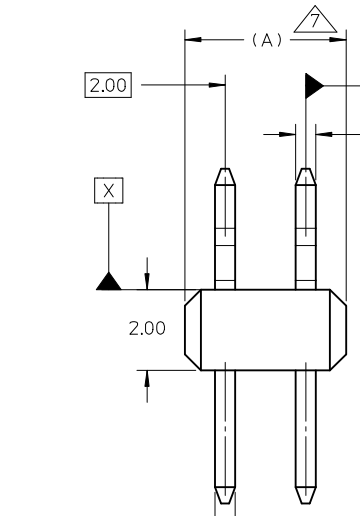


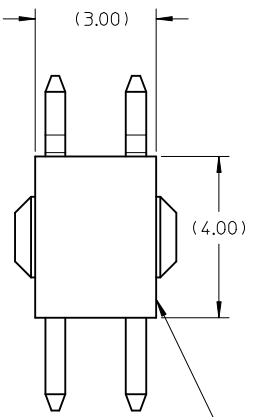
10	9	8	7	6	DIMENSIONS				
					A	B	M	P	F
ASSEMBLY	CKT	VOID POSITION	PLATING						
151011-0201	2	-	4	4.00	2.00	3.30	3.00	8.30	
151011-0600	06	3 & 4	4	12.00	10.00	3.20	2.85	8.05	



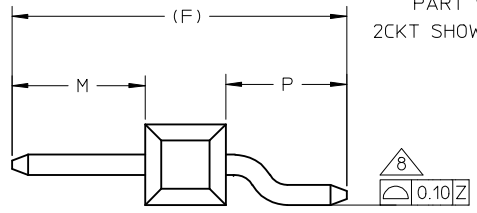
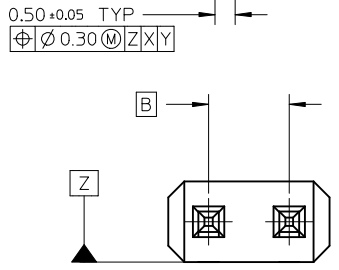
ISO VIEW WITH KAPTON TAPE



RECOMMENDED PCB LAYOUT



KAPTON TAPE PART WITH KAPTON TAPE 2CKT SHOWN FOR ILLUSTRATION ONLY

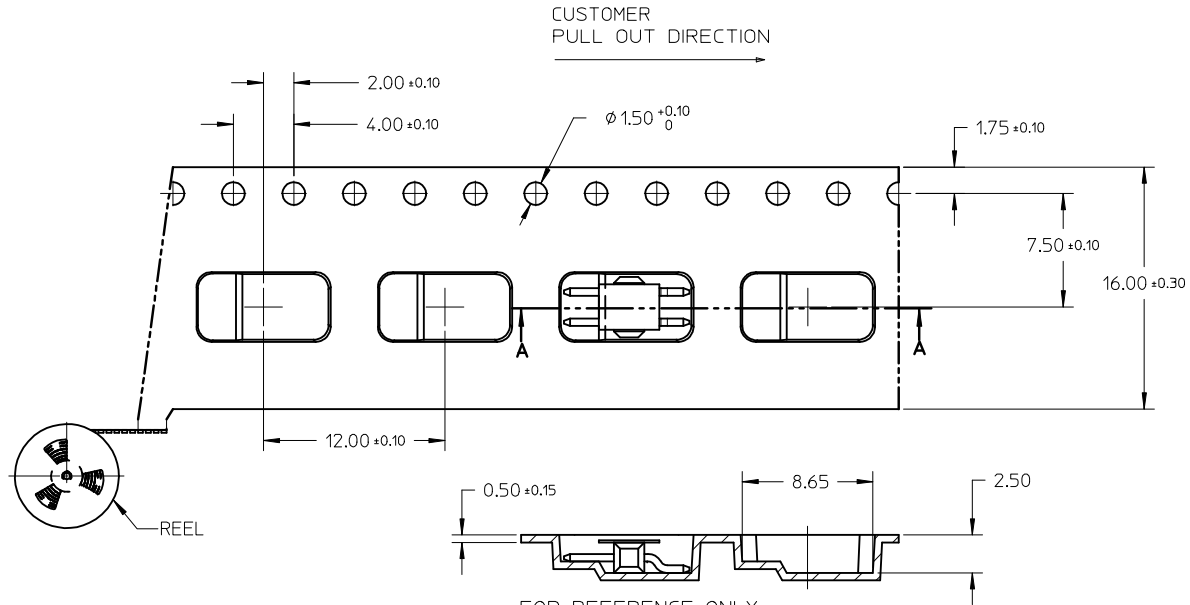


- NOTES
- MATERIAL:
 - HSG: LCP, GLASS-FILLED, UL94V-0 COLOR: BLACK
 - PIN: 0.50MM SQ, COPPER ALLOY
 - PLATING TYPE:
 - (1) GOLD FLASH ON CONTACT AND 2.50µm MIN. TIN ON SOLDER TAIL OVER 1.25µm MIN. NICKEL OVERALL.
 - (2) 0.38µm MIN. GOLD PLATE ON CONTACT AND 2.50µm MIN. TIN ON SOLDER TAIL OVER 1.25µm MIN. NICKEL OVERALL.
 - (3) 0.75µm MIN. GOLD PLATE ON CONTACT AND 2.50µm MIN. TIN ON SOLDER TAIL OVER 1.25µm MIN. NICKEL OVERALL.
 - (4) 2.50µm MIN TIN OVERALL 1.25µm NICKEL OVERALL
 - PRODUCT SPECIFICATION: PS-87761-100
 - PACKAGING TYPE: TAPE AND REEL, : PK-87858-300
 - KAPTON TAPE IS CENTERED ALONG THE PART AS SHOWN.
 - RECOMMENDED PCB THICKNESS IS 1.60mm±0.10
 - IRREGULAR CIRCUIT CUTOFF WITHIN BREAKAWAY SECTION IS PERMISSIBLE. CUTTING OR CHIPPING OF THE MAIN BODY IS NOT ACCEPTABLE.
 - COPLANARITY IS TO BE MEASURED BY RESTING THE SOLDER TAIL ON A FLAT SURFACE.
 - THE ABOVE CKT 2 IS FOR ILLUSTRATION PURPOSE ONLY

ADD P/N: 151011-0600 EC NO: S2017-0163 DRWN: NRAMAKRI SHINA 2016/10/04 CHKD: NRAMAKRI SHINA 2016/10/04 APPR: ISHWARG 2016/11/21	QUALITY SYMBOLS F _A =0 F _C =0 F _P =0	GENERAL TOLERANCES (UNLESS SPECIFIED)		DIMENSION STYLE	SCALE	DESIGN UNITS	THIRD ANGLE PROJECTION	
		mm	INCH	MM ONLY	NTS	METRIC		
		4 PLACES	± ---	± ---	DRAWN BY	DATE	TITLE	
		3 PLACES	± ---	± ---	ATSEE	2014/09/04	CUSTOM HEADER	
			2 PLACES	± 0.20	± ---	CHECKED BY	DATE	
			1 PLACE	± ---	± ---	FANNYWONG	2014/09/04	
			0 PLACE	± ---	± ---	APPROVED BY	DATE	
						LBLEE	2014/10/03	
			ANGULAR ± 3 °		MATERIAL NO.	DOCUMENT NO.		
			DRAFT WHERE APPLICABLE MUST REMAIN WITHIN DIMENSIONS		SEE TABLE	SD-151011-0201		
			SIZE	THIS DRAWING CONTAINS INFORMATION THAT IS PROPRIETARY TO MOLEX INCORPORATED AND SHOULD NOT BE USED WITHOUT WRITTEN PERMISSION				
			A3					
						SHEET NO.		
						1 OF 2		

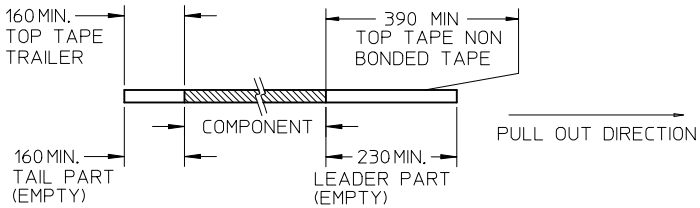


CKT	PCS/ REEL
2	2000

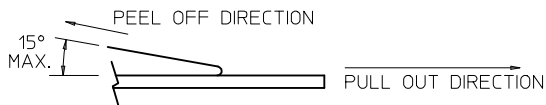


NOTES:

1. LEADER AND TRAILER TAPE



2. PEELING OFF FORCE OF THE TOP TAPE: 20 - 80gf.
(PEELING DIRECTION AS SHOWN IN FOLLOWING FIGURE)



3. TAPE AND REEL SPECIFICATION IS AS PER EIA-481.
4. THE TAPE IS TREATED FOR ANTI-STATIC.

FOR REFERENCE ONLY
ORIENTATION OF
PART IN T&R

SECTION A-A

SEE SHT 1 EC NO: S2017-0163 DRWING: MRAMAKRI SHINA 2016/10/04 CHKD: MRAMAKRI SHINA 2016/10/04 APPR: ISHWARG 2016/11/21	QUALITY SYMBOLS	GENERAL TOLERANCES (UNLESS SPECIFIED)	DIMENSION STYLE	SCALE	DESIGN UNITS	THIRD ANGLE PROJECTION
	$F_A=0$ $F_G=0$ $F_P=0$	mm INCH 4 PLACES ± --- ± --- 3 PLACES ± --- ± --- 2 PLACES ± 0.20 ± --- 1 PLACE ± --- ± --- 0 PLACE ± --- ± ---	MM ONLY	NTS	METRIC	
	ANGULAR ± 3 ° DRAFT WHERE APPLICABLE MUST REMAIN WITHIN DIMENSIONS	DRAWN BY: ATSEE DATE: 2014/09/04 CHECKED BY: FANNYWONG DATE: 2014/09/04 APPROVED BY: LBLEE DATE: 2014/10/03	TITLE	CUSTOM HEADER 2.00MM PITCH SINGLE ROW SINGLE WAFER SMT		
		MATERIAL NO. DOCUMENT NO. SHEET NO.	SEE TABLE	SD-151011-0201 2 OF 2		

THIS DRAWING CONTAINS INFORMATION THAT IS PROPRIETARY TO MOLEX INCORPORATED AND SHOULD NOT BE USED WITHOUT WRITTEN PERMISSION