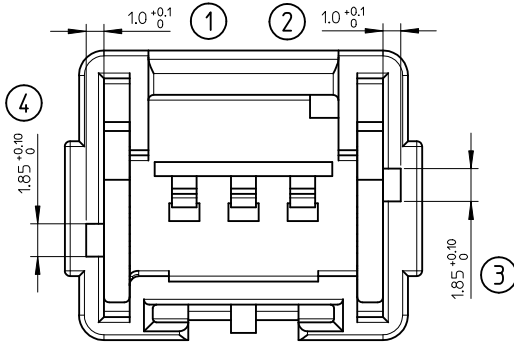
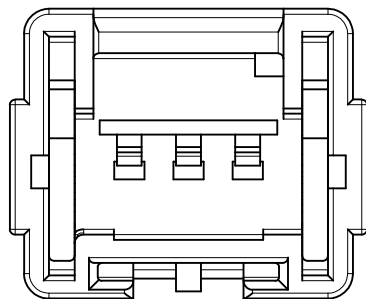


GREEN CODING
P/N 0988221035



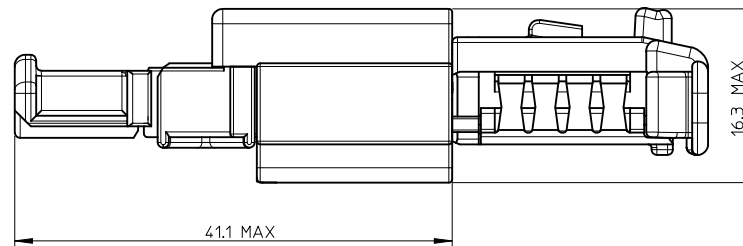
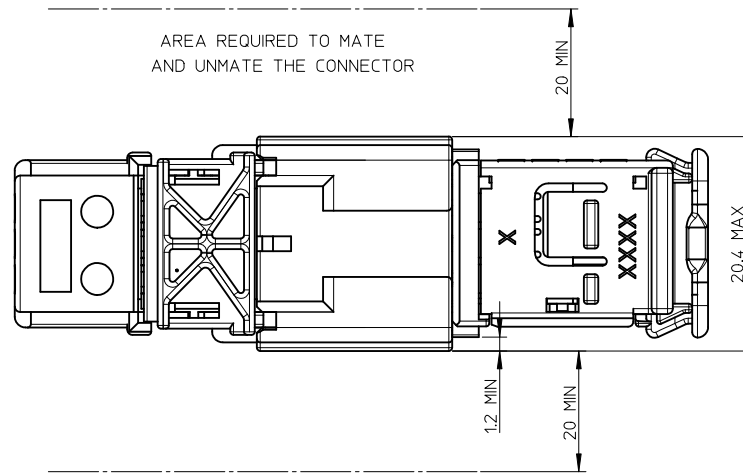
BLACK CODING
P/N 0988221031



WHITE CODING
P/N 0988221030

CODING 5:1

HANDLING AREA

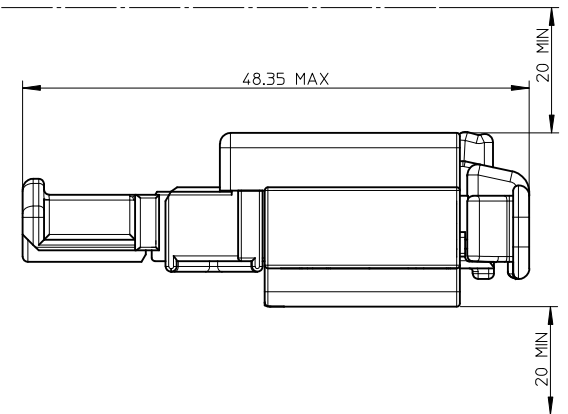


NOTE : 1 - The using conditions are shown in the MOLEX specification n°AS-98821-001.

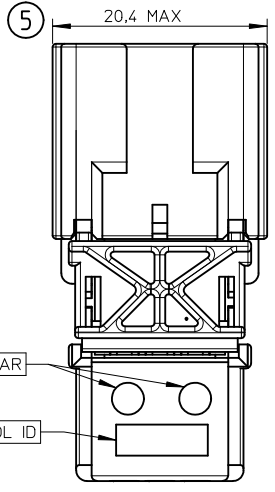
2 - Male terminal used : SICMA 3 1.5mm

3 - Male connector will mate with female connector P/N 098817103x

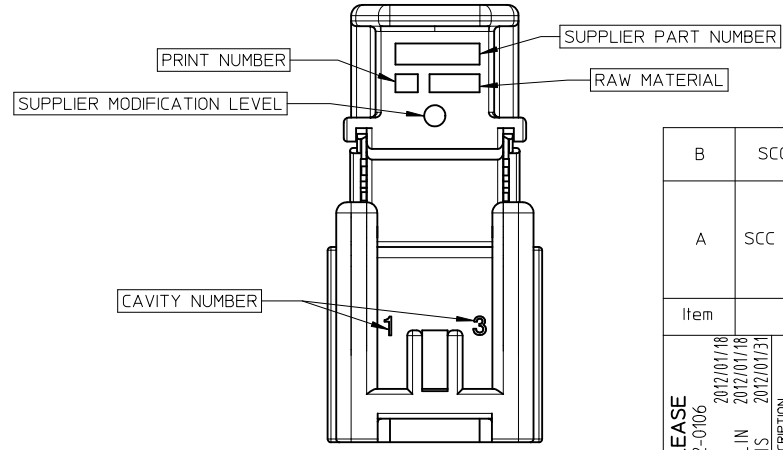
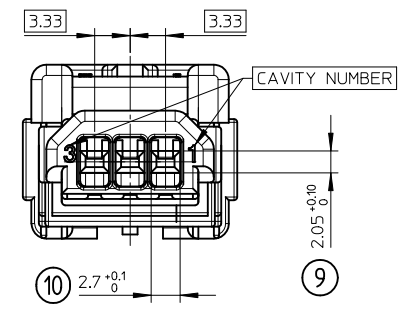
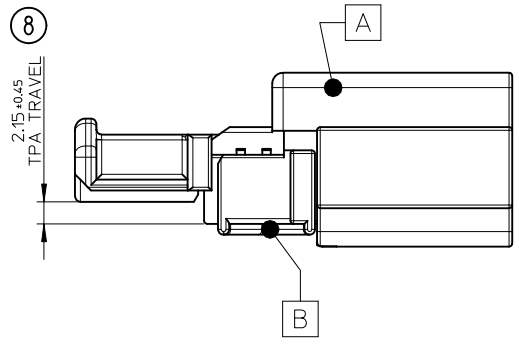
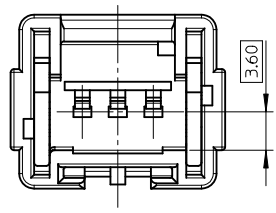
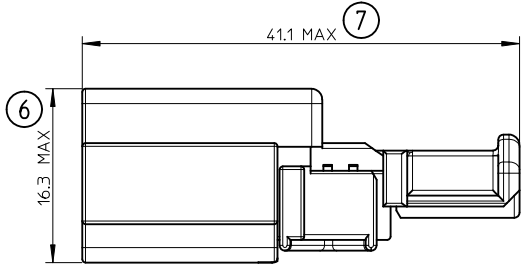
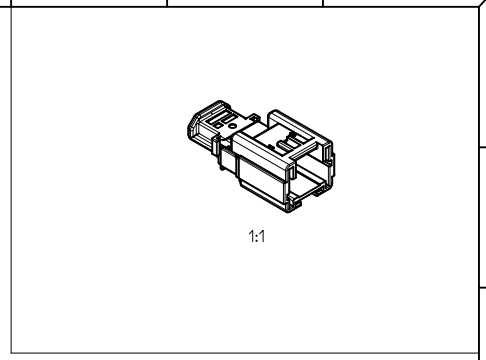
AREA REQUIRED WHEN THE CONNECTOR IS MATED



| | | | | | | | | |
|--|---|---------------------------------------|---------|---|---------------------|--|-------------------------------------|----------------------------|
| FIRST RELEASE EC NO: G2012-0106 DRAWN: VJOUAS 2012/01/18 CHKD: AHERBELIN 2012/01/18 APPR: OPLESSIS 2012/01/31 | QUALITY SYMBOLS $\nabla=0$ $\nabla=0$ $\nabla=0$ | GENERAL TOLERANCES (UNLESS SPECIFIED) | | DIMENSION STYLE MM ONLY | SCALE 3:1 | DESIGN UNITS METRIC | FIRST ANGLE PROJECTION | |
| | | 4 PLACES \pm --- \pm --- | mm INCH | DRAWN BY VJOUAS | DATE 2012/01/18 | TITLE NSCC PIN CONN 1.5 3CKT | | |
| | | 3 PLACES \pm --- \pm --- | | CHECKED BY AHERBELIN | DATE 2012/01/18 | MOLEX INCORPORATED | | |
| | | 2 PLACES \pm --- \pm --- | | APPROVED BY OPLESSIS | DATE 2012/01/31 | MATERIAL NO. SEE SHEET 2 | DOCUMENT NO. SD-98822-003 | SHEET NO. 1 OF 2 |
| | | ANGULAR $\pm 1^\circ$ | | THIS DRAWING CONTAINS INFORMATION THAT IS PROPRIETARY TO MOLEX INCORPORATED AND SHOULD NOT BE USED WITHOUT WRITTEN PERMISSION | | | | |
| DRAFT WHERE APPLICABLE MUST REMAIN WITHIN DIMENSIONS | | | | | | | | |



| | |
|------------------------------|-------|
| 0988221035 | GREEN |
| 0988221031 | BLACK |
| 0988221030 | WHITE |
| PART NUMBER ASSEMBLY PART | COLOR |



BLACK CODING (P/N 0988221031) IS SHOWN.

| Item | Description | Part-number | Color | Raw Material | Weight effective (g) |
|------|------------------------------------|-------------|--------|--------------------------|----------------------|
| B | SCC Pin Conn 1.5x0.8 TPA 3Ckt | 0988220134 | Yellow | POLYAMIDE >PA66-GF20< | 4.94 |
| A | SCC Pin Conn Unsealed 1.5x0.8 3Ckt | 0988220035 | Green | POLYESTER >PBT< | |
| | | 0988220031 | Black | | |
| | | 0988220030 | White | | |

| FIRST RELEASE EC NO: G2012-0106 DRAWN BY: VJOUAS 2012/01/18 CHKD: AHERBEL IN 2012/01/18 APPR: OPLESSIS 2012/01/31 | DESCRIPTION QUALITY SYMBOLS $\nabla=0$ $\nabla=0$ $\nabla=0$ | GENERAL TOLERANCES (UNLESS SPECIFIED) <table border="1"> <tr> <th></th> <th>mm</th> <th>INCH</th> </tr> <tr> <td>4 PLACES</td> <td>± ---</td> <td>± ---</td> </tr> <tr> <td>3 PLACES</td> <td>± ---</td> <td>± ---</td> </tr> <tr> <td>2 PLACES</td> <td>± ---</td> <td>± ---</td> </tr> <tr> <td>1 PLACE</td> <td>± 0.1</td> <td>± ---</td> </tr> </table> | | | mm | INCH | 4 PLACES | ± --- | ± --- | 3 PLACES | ± --- | ± --- | 2 PLACES | ± --- | ± --- | 1 PLACE | ± 0.1 | ± --- | DIMENSION STYLE MM ONLY | | SCALE 3:1 | DESIGN UNITS METRIC | FIRST ANGLE PROJECTION |
|--|--|--|-------|--|----|-------------------------------------|----------|-------|-------|----------|-------|-------|----------|-------|-------|---------|-------|-------|-----------------------------------|--|---------------------|-------------------------------|------------------------|
| | | | mm | INCH | | | | | | | | | | | | | | | | | | | |
| | | 4 PLACES | ± --- | ± --- | | | | | | | | | | | | | | | | | | | |
| | | 3 PLACES | ± --- | ± --- | | | | | | | | | | | | | | | | | | | |
| 2 PLACES | ± --- | ± --- | | | | | | | | | | | | | | | | | | | | | |
| 1 PLACE | ± 0.1 | ± --- | | | | | | | | | | | | | | | | | | | | | |
| DRAFT WHERE APPLICABLE MUST REMAIN WITHIN DIMENSIONS | | DRAWN BY: VJOUAS 2012/01/18 CHECKED BY: AHERBEL IN 2012/01/18 APPROVED BY: OPLESSIS 2012/01/31 | | TITLE NSCC PIN CONN 1.5 3CKT | | MOLEX INCORPORATED | | | | | | | | | | | | | | | | | |
| SIZE A 2 | | SEE CHART | | MATERIAL NO. | | DOCUMENT NO. SD-98822-003 | | | | | | | | | | | | | | | | | |
| THIS DRAWING CONTAINS INFORMATION THAT IS PROPRIETARY TO MOLEX INCORPORATED AND SHOULD NOT BE USED WITHOUT WRITTEN PERMISSION | | | | | | | | | | | | | | | | | | | | | | | |