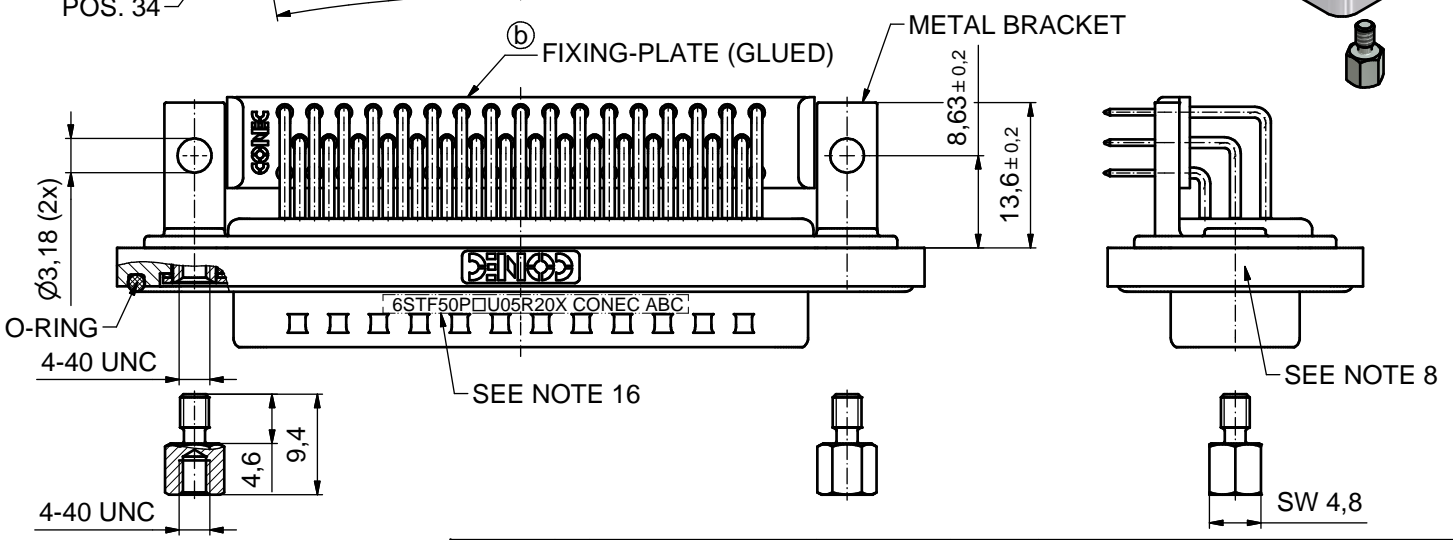
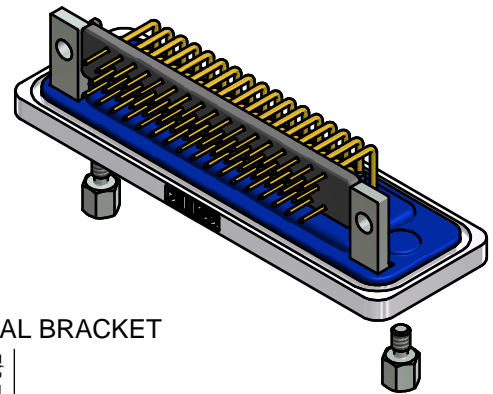
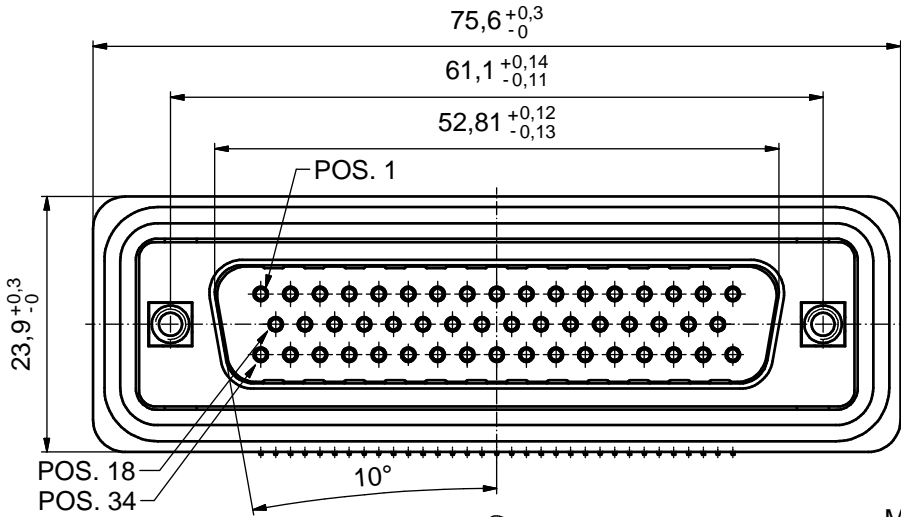
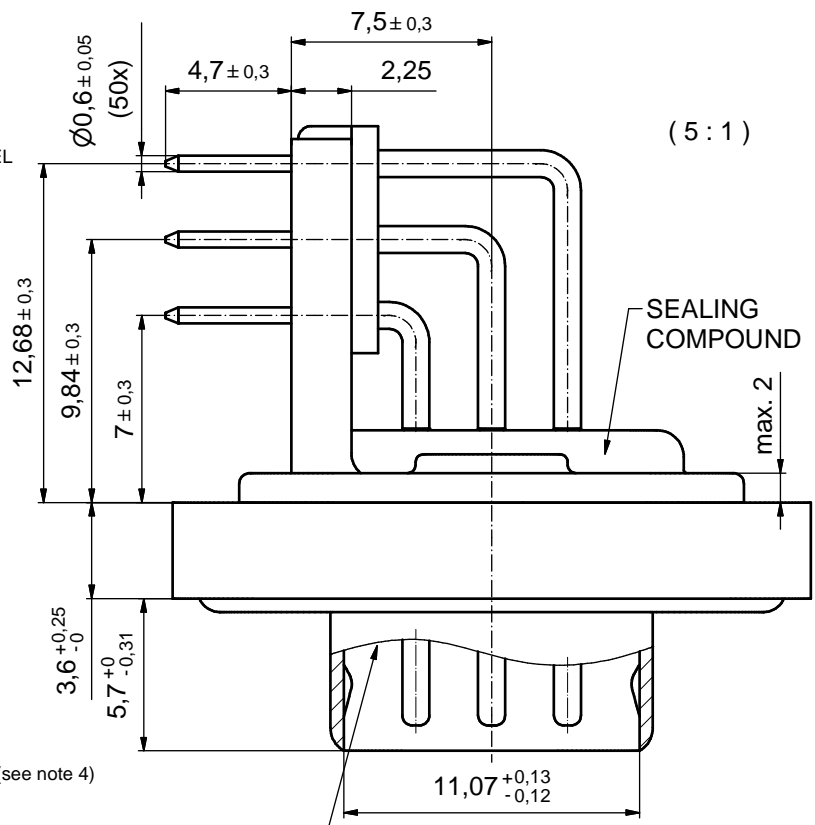


① NOTES:

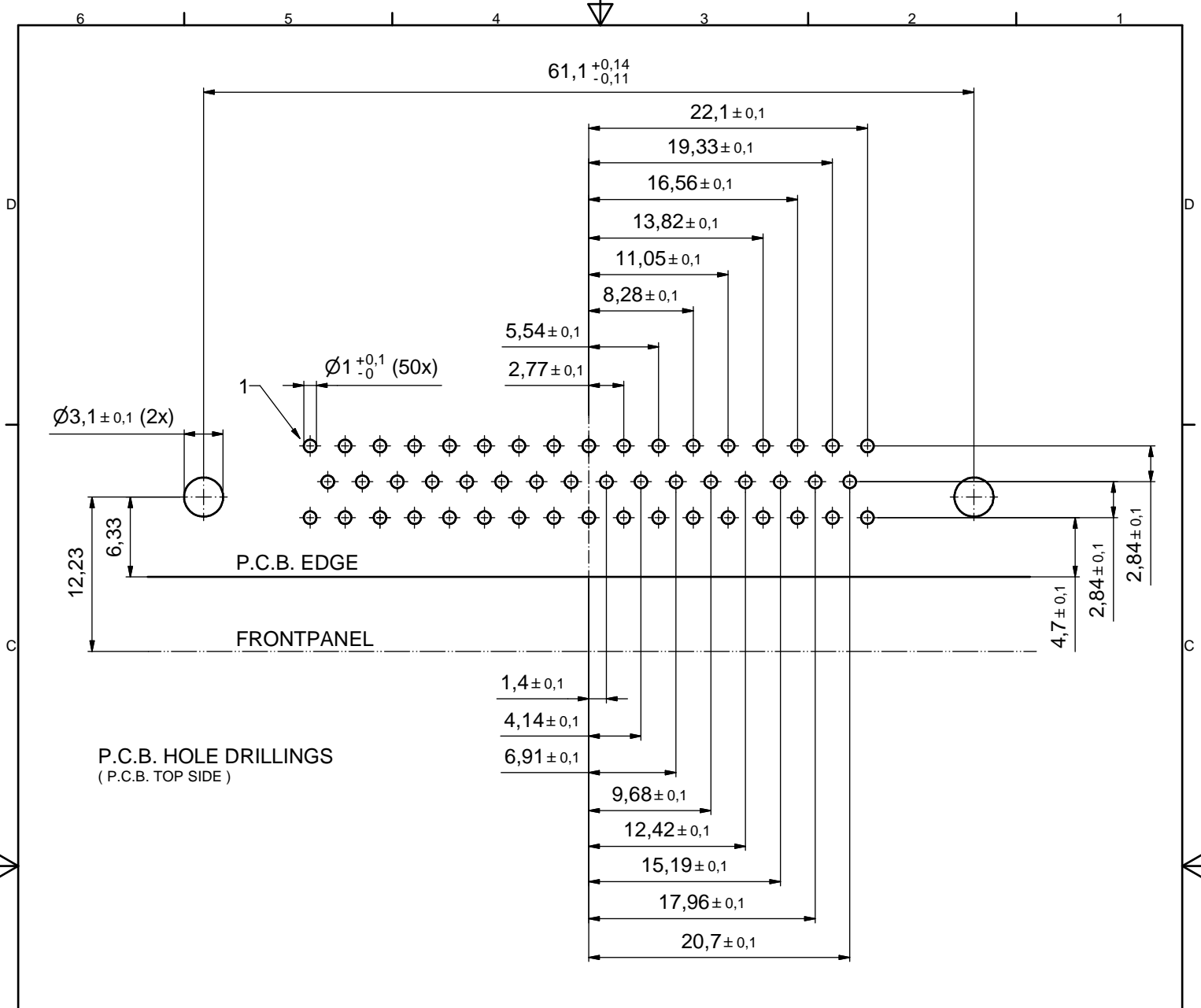
1. FOR WAVESOLDERING
(SOLDER BATH TEMPERATURE 240°C FOR 5 SEC.
AND SOLDER PREHEAT 100°C FOR 30 SEC.)
2. METALSHELLS: COPPER ALLOY; min. 315µin TIN over 40-80µin NICKEL
3. INSULATOR: HIGH TEMPERATURE PLASTIC UL 94 V-0; BLACK
4. SIGNAL CONTACTS: COPPER ALLOY; PLATING (SEE PART NO.):
 PLEASE ADD A for GOLD FLASH over NICKEL (PREFERRED TYPE)
 PLEASE ADD B for 20µin HARD GOLD over min. 50µin NICKEL
 PLEASE ADD C for 30µin HARD GOLD over min. 50µin NICKEL
5. METAL BRACKETS: STEEL; min. 320µin TIN over 80µin NICKEL
300µin COPPER / 40-120µin NICKEL / 120-200µin TIN
6. THREADED INSERTS: COPPER ALLOY;
min. 200µin TIN over 80µin NICKEL
7. COLLARS: COPPER ALLOY; NICKEL PLATED
8. FRAME: ZINC DIE CAST; NICKEL PLATED
9. HEXLOCKING SCREWS: STAINLESS STEEL
10. RUBBER-GASKET: TPE; BLACK
11. FIXING-PLATE: PBT GF UL 94 V-0; BLACK
12. CAPACITANCE: 1300pF ± 20%
13. DIELECTRIC WITHSTANDING VOLTAGE: 424 VDC
14. P.C.B. HOLE DRILLINGS AND
RECOMMENDED PANEL CUT-OUT ON SHEET 2
15. RECOMMENDED TORQUE FOR MOUNTING SCREW
35Ncm (3.1 in.LB) / max. 40Ncm (3.5 in.LB)
16. CONNECTOR IS PART MARKED: **6STF50P□U05R20X CONEC ABC**; (see note 4)



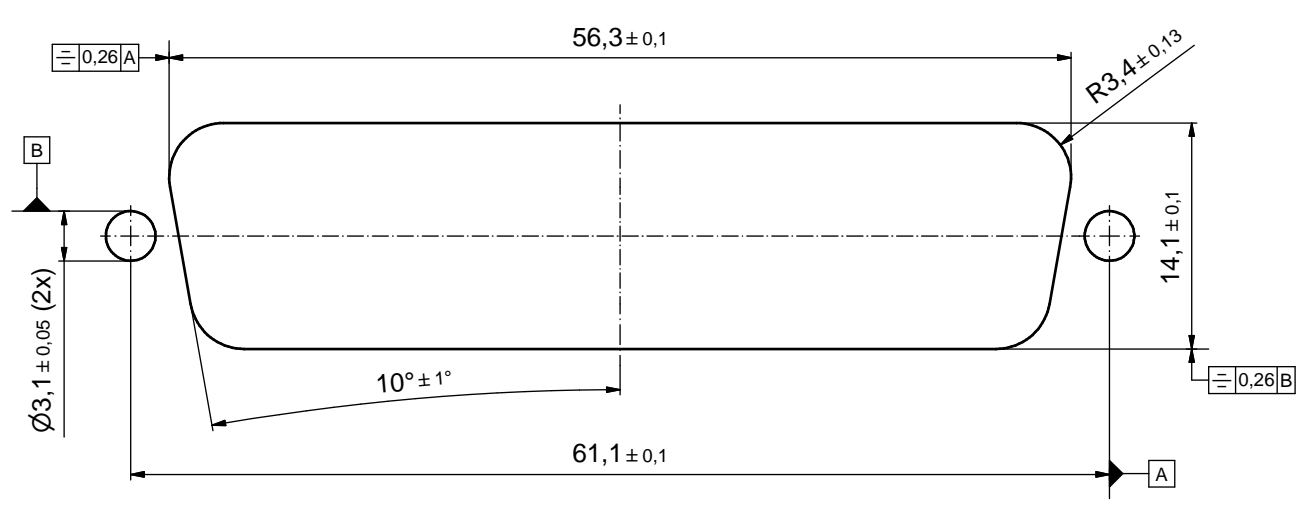
FILTER IS TOTALLY GUARDED AGAINST HUMIDITY. WATER COULD PENETRATE INTO THE MATING AREA. AT ALL TIMES WATER RESISTANT CONNECTORS NOT IN USE SHOULD BE COVERED WITH A CONEC WATER RESISTANT CAP OR WATER TIGHT HOOD.

RoHS compliant

THIS DRAWING MAY NOT BE COPIED OR REPRODUCED IN ANY WAY, AND MAY NOT BE PASSED ON TO A THIRD PARTY WITHOUT WRITTEN PERMISSION. OWNERSHIP AND COPYRIGHT OF CONEC GmbH DO NOT ALTER CAD DRAWING BY HAND				tolerance		dim. in mm	scale: 2:1 (5:1)	
				date			material: SEE NOTES	
				drawn	30.04.15	Henneboel		title: D-SUB C-FILTER MALE 90° 50pos. SOLDER PIN ANGLED thread insert, metal bracket, fixing-plate, hexlocking screw
				appd.	30.04.15	Schmidt		
				norm			dwg no:	
				d-old			DIN-A3	
2 x b	A5702	01.07.2015	Lehm.	CONEC		part no: 15K1A1633		sh: 1/2
a	Original					part no: 6STF50P□U05R20X (see note 4)		
rev.	description	date	name					



RECOMMENDED PANEL CUT-OUT



THIS DRAWING MAY NOT BE COPIED OR REPRODUCED IN ANY WAY, AND MAY NOT BE PASSED ON TO A THIRD PARTY WITHOUT WRITTEN PERMISSION. OWNERSHIP AND COPYRIGHT OF CONEC GmbH DO NOT ALTER CAD DRAWING BY HAND				tolerance		 dim. in mm	scale: 3:1		
							material: SEE SHEET 1		
				date	name		title: P.C.B. HOLE DRILLINGS RECOMMENDED PANEL CUT-OUT D-SUB C-FILTER MALE 90° 50pos.		
				drawn	30.04.15	Henneboel			
				appd.	30.04.15	Schmidt			
			norm				dwg no:		
			d-old				15K1A1633		
			a Original				DIN-A3		
rev.	description	date	name				part no: SEE SHEET 1		sh: 2/2