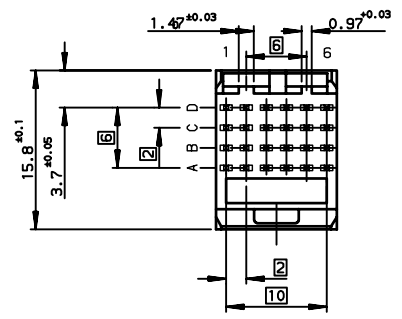
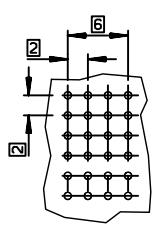


LAYOUT FOR P.C.B  
(PER 12mm LENGTH)



TIN LEAD PART NUMBER

Part number: HM1W41xyR000H6				
Replace x by ( dim-P ±0.10 )		Replace y by		
ROW-A	ROW-B	ROW-C	ROW-D	P if dim-D = 4.25±0.25
A = 5.00	5.00	5.00	5.00	K if dim-D = 11.8±0.25
B = 6.50	5.00	5.00	5.00	V if dim-D = 13.6±0.25
C = 6.50	5.75	5.75	6.50	L if dim-D = 15.6±0.25
D = 6.50	6.50	6.50	6.50	N if dim-D = 17.0±0.25
E = 5.75	7.25	5.75	5.75	
H = 8.00	8.00	7.25	6.50	
K = 6.50	8.00	6.50	6.50	
L = 5.75	5.75	5.75	5.75	
M = 7.25	7.25	7.25	7.25	
N = 8.00	8.00	8.00	8.00	

LEAD FREE PART NUMBER

Part number: HM1W41xyR000H6LF				
Replace x by ( dim-P ±0.10 )		Replace y by		
ROW-A	ROW-B	ROW-C	ROW-D	P if dim-D = 4.25±0.25
A = 5.00	5.00	5.00	5.00	K if dim-D = 11.8±0.25
B = 6.50	5.00	5.00	5.00	V if dim-D = 13.6±0.25
C = 6.50	5.75	5.75	6.50	L if dim-D = 15.6±0.25
D = 6.50	6.50	6.50	6.50	N if dim-D = 17.0±0.25
E = 5.75	7.25	5.75	5.75	
H = 8.00	8.00	7.25	6.50	
K = 6.50	8.00	6.50	6.50	
L = 5.75	5.75	5.75	5.75	
M = 7.25	7.25	7.25	7.25	
N = 8.00	8.00	8.00	8.00	

GENERAL CHARACTERISTICS AND ROHS INFORMATIONS:  
SEE PRODUCT SPECIFICATION GS-12-445

(REDUCED SCALE SHEET)

European Views

- NOTE-1: "EYE OF THE NEEDLE" PRESS-FIT PIN TYPE
- NOTE-2: CAVITY FOR CODING KEY MOUNTING AND CABLE CONNECTOR LATCH.
- NOTE-3: INSERTION TOOLING ON PCB, SEE DRAWING REF C-8626-1001
- NOTE-4: IF SUFFIX "P" IS ADDED IN P/N, PACKAGING IS IN TRAYS BUT CONNECTOR MARKING IS WITHOUT "P"  
EXAMPLE: HM1W41xyR000H6P MARKED HM1W41xyR000H6
- NOTE-5: P.C.B HOLES DEFINITION, SEE GS-12-445

rev	ecn no	dr	date
K	-	PER	2001/04/18
L	LS05-004	MLE	2005/02/14
M	LS06-0097	LGO	2006/07/26
N	LS07-0012	MLE	2007/03/23
-	-	-	-
-	-	-	-
-	-	-	-

www.fciconnect.com		surface ISO 1302 ✓	tolerance std ISO 406 ISO 1101	projection mm
TOLERANCES UNLESS OTHERWISE SPECIFIED				
Dr	CHAMPION	12/12/35	ANGULAR	0.X ±0.1
Eng	LENOIR	1991/07/30	LINEAR	0.XX ±0.1
Chr	LEGARE	1991/07/30	0.XX' ±2'	0.XXX ±0.1
Appr	LEGARE	1991/07/30	Product family	METRAL
title METRAL STRAIGHT HEADER - 24 WAY			size A3	Scale 2
catalog no			ECN LS07-0012	Spec ref -
dwg no C-8626-0009			Rev. N	sheet 1 of 1

Copyright FCI. FCJ