

4

3

2

1

THIS DRAWING IS UNPUBLISHED.

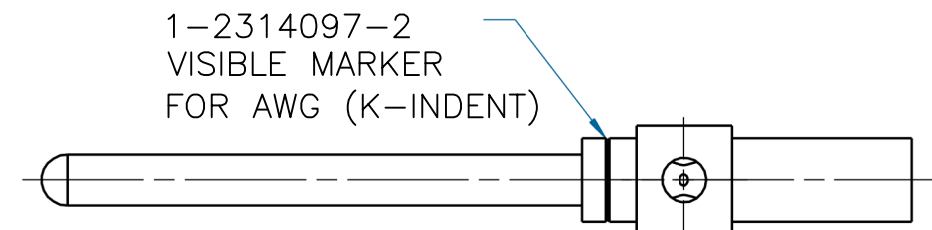
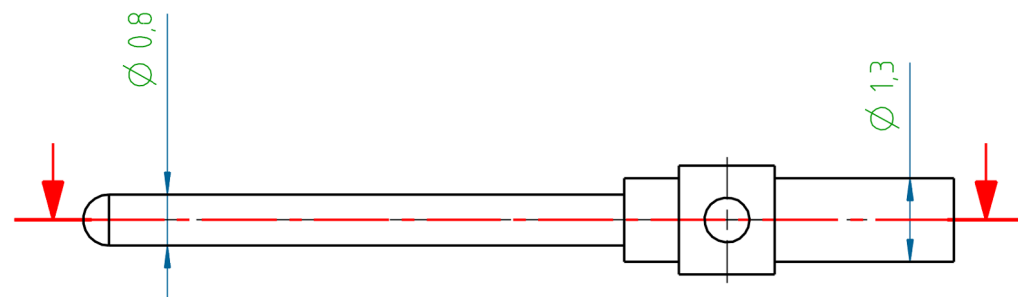
RELEASED FOR PUBLICATION

REVISIONS

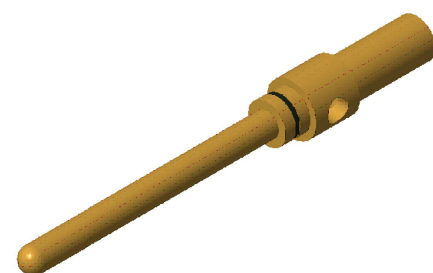
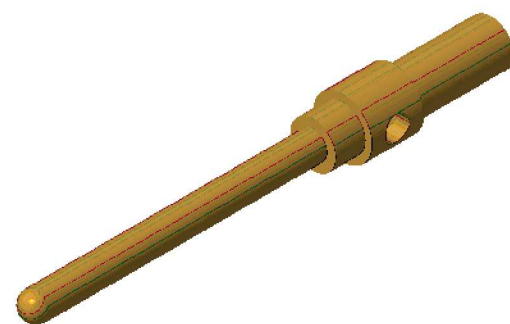
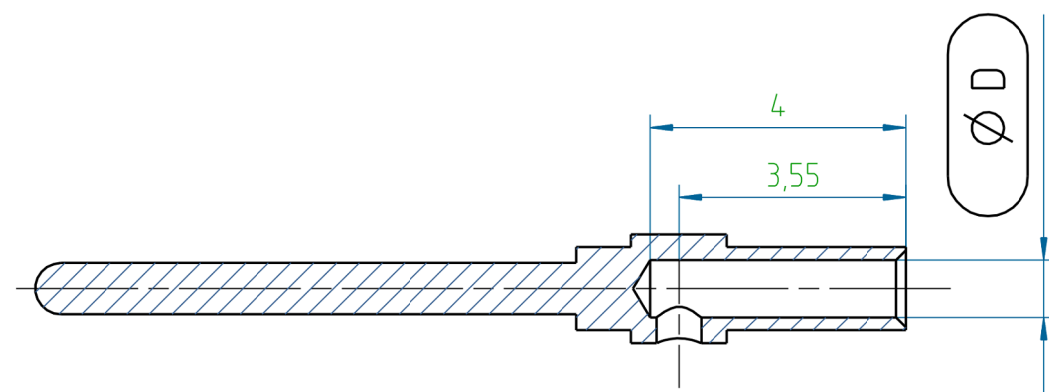
© COPYRIGHT - By - ALL RIGHTS RESERVED.

P	LTR	DESCRIPTION	DATE	DWN	APVD
	A1	REVISED PER ECR-16-014891	09JAN2017	KK	SE

PROJECT	PRJ-14-000004825
PART NO.	X-2314097-X
DESCRIPTION	M12 CRIMP CONTACT PIN 0.8mm AWG22/AWG26
CUSTOMER	GENERAL MARKET



1-2314097-2  
VISIBLE MARKER  
FOR AWG (K-INDENT)



1-2314097-1

1-2314097-2

NOTES:

- APPLICATION TOOLING TO BE USED  
601967-1 (STANDARD) OR  
601966-1 (COMPACT).

SL.NO	PART NO.	PART NAME	ØD	MATERIAL	SURFACE TREATMENT	REMARKS
2	1-2314097-2	M12 CRIMP CONTACT PIN A 0.8MM AWG26 (AU08)	0.6	BRASS	1.5-2.5µm Ni/0.8µmAu	K-INDENT
1	1-2314097-1	M12 CRIMP CONTACT PIN A 0.8MM AWG22 (AU08)	0.9			-

THIS DRAWING IS A CONTROLLED DOCUMENT.		DWN KIRAN K 06DEC2016	TE Connectivity															
		CHK KIRAN K 06DEC2016																
DIMENSIONS: mm		APVD S EGBERT 06DEC2016	NAME M12 CRIMP CONTACT PIN 0.8mm AWG22/AWG26															
TOLERANCES UNLESS OTHERWISE SPECIFIED: DIN ISO 2768 m		PRODUCT SPEC 108-156001																
<table border="0"> <tr><td>0 PLC</td><td>± -</td></tr> <tr><td>1 PLC</td><td>± -</td></tr> <tr><td>2 PLC</td><td>± -</td></tr> <tr><td>3 PLC</td><td>± -</td></tr> <tr><td>4 PLC</td><td>± -</td></tr> <tr><td>ANGLES</td><td>± -</td></tr> </table>		0 PLC	± -	1 PLC	± -	2 PLC	± -	3 PLC	± -	4 PLC	± -	ANGLES	± -	APPLICATION SPEC 114-156002	SIZE A3	CAGE CODE 00779	DRAWING NO C=2314097	RESTRICTED TO -
0 PLC	± -																	
1 PLC	± -																	
2 PLC	± -																	
3 PLC	± -																	
4 PLC	± -																	
ANGLES	± -																	
MATERIAL -		FINISH -	WEIGHT	CUSTOMER DRAWING														
		SCALE NTS		SHEET 1 OF 1	REV A1													