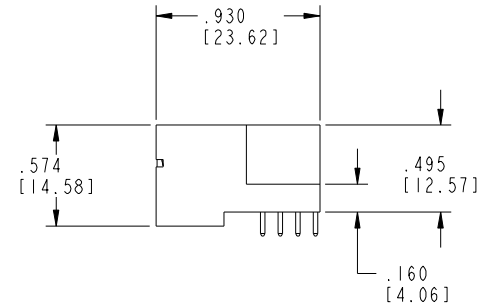
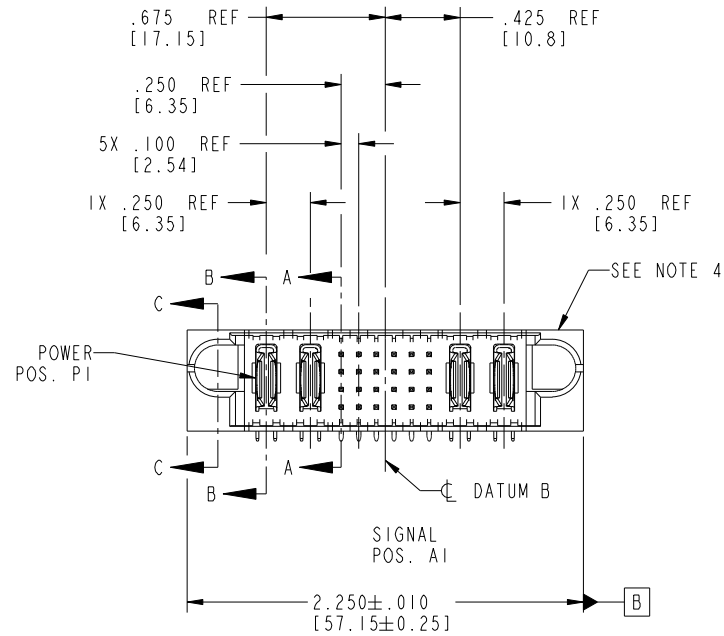


Tous droits strictement reserves. Reproduction ou communication a des tiers interdite sous quelque forme que ce soit sans autorisation ecrite du proprietaire. Propriete de c FCI. Droits de reproduction FCI.



All rights strictly reserved. Reproduction or issue to third parties in any form whatever is not permitted without written authority from the proprietor. Property of FCI. Copyright FCI.

PRODUCT NO.	ROWS	POWER		SIGNAL						POWER		
		E1	P1	P2	1	2	3	4	5	6	P3	P4
51730-120 Note: ③	D C B A		PA	PA	UUUUUH	TTTTTG	SSSSSF	RRRRRE		PA	PA	



CODE	DIM "M" MATING LENGTH	CONTACT TYPE
E	.220 [5.59]	SIGNAL
F	.220 [5.59]	SIGNAL
G	.220 [5.59]	SIGNAL
H	.220 [5.59]	SIGNAL
R	.270 [6.86]	SIGNAL
S	.270 [6.86]	SIGNAL
T	.270 [6.86]	SIGNAL
U	.270 [6.86]	SIGNAL
PA	N/A [N/A]	POWER

mat'l code				SEE NOTE 2		tolerances unless otherwise specified		CUSTOMER		 www.ficconnect.com		
ltr	ecn no.	dr	date	linear	.XX±.01/0.X±0.3		COPY		title			
A	DG05-0555	RYAN	01/26/06		.XXX±.005/0.XX±0.13		projection		2P + 24S + 2P			
B	DG10-0009	WD	02/25/10	angles	.XXX±.002/0.XXX±0.051		 INCH/MM		RIGHT ANGLE SOLDER HEADER			
					0°±2°		scale		product family		code	
				dr	RYAN.YUAN	12/21/05	1:1		PwrBlade		213	
				enr	SALLY.LUO	01/26/06			size		sheet	
				chr	DAVID.SU	12/21/05			dwg no		1 of 4	
				appd	JOSEPH.HSIA	12/21/05			A		51730-120	
sheet index	revision sheet	B	B	B	B	B			cage code		4	
		1	2	3	4				22526			

Pro/E

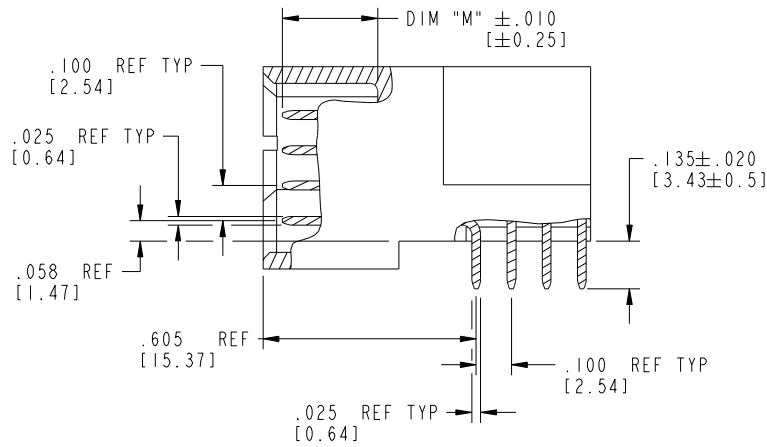
cage code 22526

Tous droits strictement réservés. Reproduction ou communication à des tiers interdite sous quelque forme que ce soit sans autorisation écrite du propriétaire. Propriété de c.FCI. Droits de reproduction FCI.

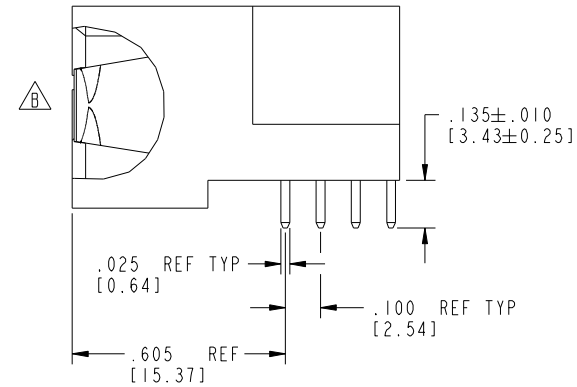


All rights strictly reserved. Reproduction or issue to third parties in any form whatever is not permitted without written authority from the proprietor. Property of FCI. Copyright FCI.

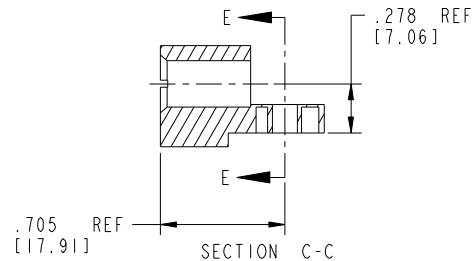
PRODUCT NUMBER  
51730-120\_\_  
Note: ③



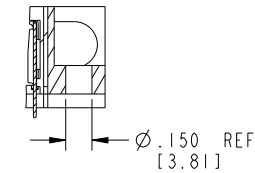
BROKEN-OUT SECTION A-A  
SCALE 2:1



BROKEN-OUT SECTION B-B  
SCALE 2:1



SECTION C-C



PARTIAL SECTION E-E

mat'l code		SEE NOTE 2		tolerances unless otherwise specified		CUSTOMER		FCI		www.fciconnect.com	
ltr	ecn no.	dr	date	linear	.XX±.01/0.X±0.3	COPY		title 2P + 24S + 2P RIGHT ANGLE SOLDER HEADER			
B				projection	.XXX±.005/0.XX±0.13	projection					
				angles	.XXX±.0020/0.XXX±0.051	INCH/MM		product family PwrBlade		code 213	
				dr	0°±2°	scale 1:1		size dwg no		sheet 2 of 4	
				enr	RYAN.YUAN 12/21/05			A 51730-120			
				chr	SALLY.LUO 01/26/06						
				appd	DAVID.SU 12/21/05						
					JOSEPH.HSIA 12/21/05						
sheet index	revision sheet										

cage code 22526

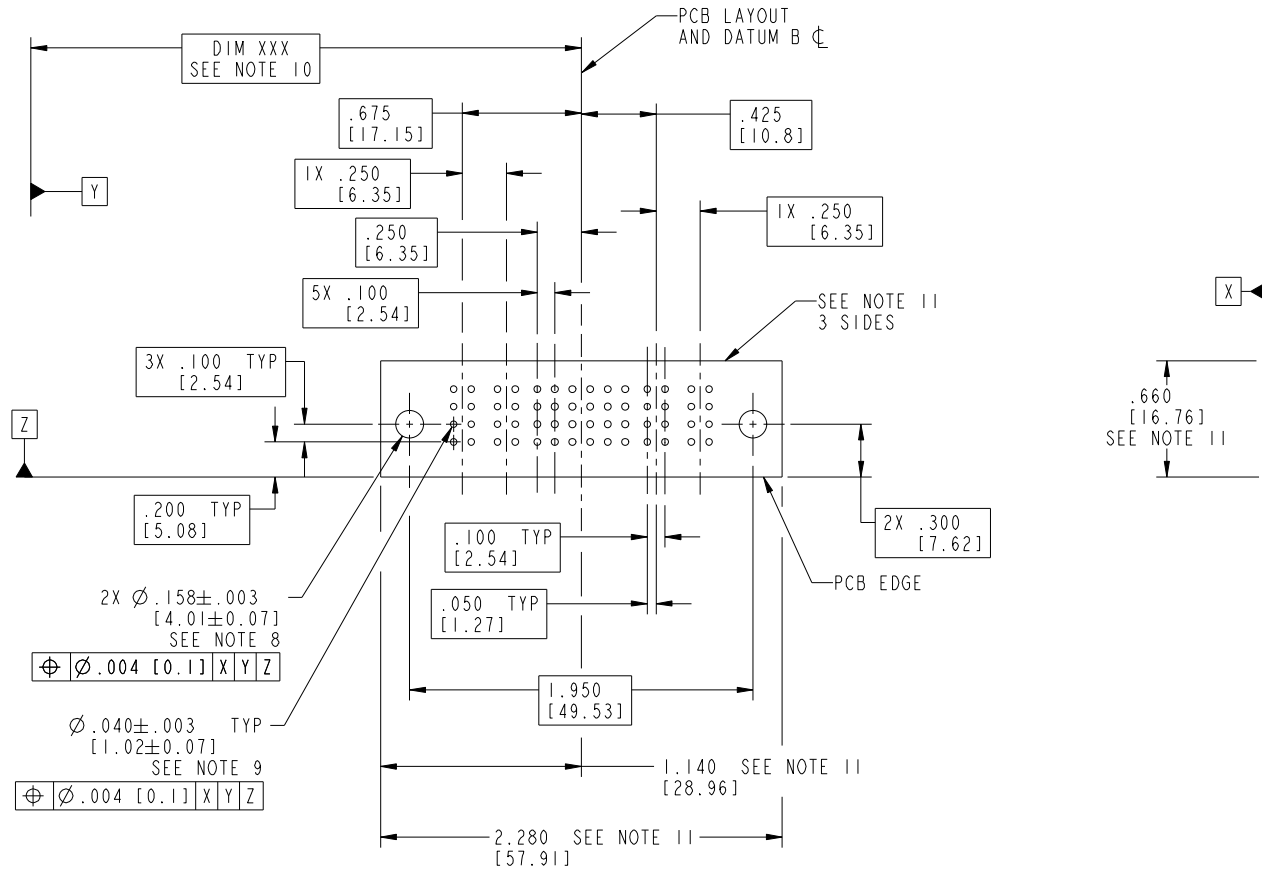
Pro/E

Tous droits strictement réservés. Reproduction ou communication à des tiers interdite sous quelque forme que ce soit sans autorisation écrite du propriétaire. Propriété de c.FCI. Droits de reproduction FCI.



All rights strictly reserved. Reproduction or issue to third parties in any form whatever is not permitted without written authority from the proprietor. Property of FCI. Copyright FCI.

PRODUCT NUMBER  
51730-120\_\_  
Note: ③



RECOMMENDED PCB LAYOUT

mat'l code		SEE NOTE 2		tolerances unless otherwise specified		CUSTOMER		 www.fciconnect.com	
ltr	ecn no.	dr	date	linear	.XX±.01/0.X±0.3	COPY		title	
B					.XXX±.005/0.XX±0.13	projection		2P + 24S + 2P	
				angles	.XXX±.0020/0.XXX±0.051			RIGHT ANGLE SOLDER HEADER	
				dr	0°±2°	INCH/MM		product family	
				enr	RYAN.YUAN 12/21/05	scale		PwrBlade	
				chr	SALLY.LUO 01/26/06	1:1		code	
				appd	DAVID.SU 12/21/05	A		213	
					JOSEPH.HSIA 12/21/05	51730-120		sheet	
sheet index	revision sheet							3 of 4	

cage code 22526

Pro/E

Tous droits strictement reserves. Reproduction ou communication a des tiers interdite sous quelque forme que ce soit sans autorisation écrite du propriétaire. Propriete de c FCI. Droits de reproduction FCI.



All rights strictly reserved. Reproduction or issue to third parties in any form whatever is not permitted without written authority from the proprietor. Property of FCI. Copyright FCI.

PRODUCT NUMBER  
51730-120\_\_  
Note: ③

NOTES:

1. DIMENSIONS AND TOLERANCES ARE IN ACCORDANCE WITH ASME Y14.5M, 1994 UNLESS OTHERWISE SPECIFIED.

CONNECTOR NOTES:

2. HOUSING MATERIAL: UL 94 V-0 GLASS FILLED HIGH-TEMP THERMOPLASTIC  
POWER CONTACT MATERIAL: COPPER ALLOY  
SIGNAL PIN MATERIAL: COPPER ALLOY

⚠ 3. PLATING: SEE ITEM 1 & 2 IN PRINT 10064183 FOR PLATING SPEC OF 51730-120 AND 51730-120LF RESPECTIVELY.

4. MANUFACTURER'S NAME, DATE CODE AND OPTIONAL P/N TO APPEAR ON THIS SURFACE. THE P/N CAN BE OMITTED IF THERE IS NOT ENOUGH SPACE ON THIS SURFACE.

5. PRODUCT SPECIFICATION GS-12-149.  
APPLICATION SPECIFICATION BUS-20-067.

6. PACKAGED IN TRAYS.

PCB NOTES:

7. ALL HOLE DIAMETERS ARE FINISHED HOLE SIZE.

8. MOUNTING HOLES, WHERE APPLICABLE, ARE UNPLATED.

9.  $\varnothing .0453 \pm .0010$  [1.151  $\pm$  0.025] DRILLED HOLES PLATED WITH  
.0003 [0.008] MIN SnPb OVER .001 [0.03]  
TO .003 [0.08] Cu PLATING TO ACHIEVE  
 $\varnothing .040 \pm .003$  [1.02  $\pm$  .07] HOLE.

10. "DIM XXX" TO BE DETERMINED BY THE CUSTOMER.

11. CONNECTOR KEEP-OUT ZONE.

mat'l code		SEE NOTE 2		tolerances unless otherwise specified		CUSTOMER		FCI		www.fciconnect.com	
ltr	ecr no.	dr	date	linear	.XX±.01/0.X±0.3	COPY					
B					.XXX±.005/0.XX±0.13	projection		title 2P + 24S + 2P			
				angles	.XXX±.0020/0.XXX±0.051			RIGHT ANGLE SOLDER HEADER			
				dr	RYAN.YUAN 12/21/05	INCH/MM		product family		PwrBlade	code
				enr	SALLY.LUO 01/26/06	scale		size	dwg no	213	
				chr	DAVID.SU 12/21/05	1:1		A	51730-120	sheet	
				appd	JOSEPH.HSIA 12/21/05					4 of 4	
sheet index		revision sheet									

cage code 22526