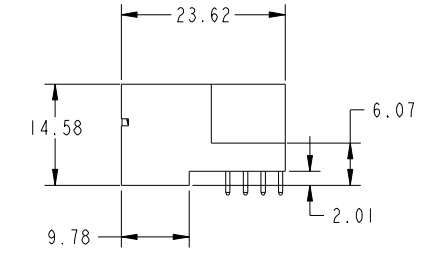
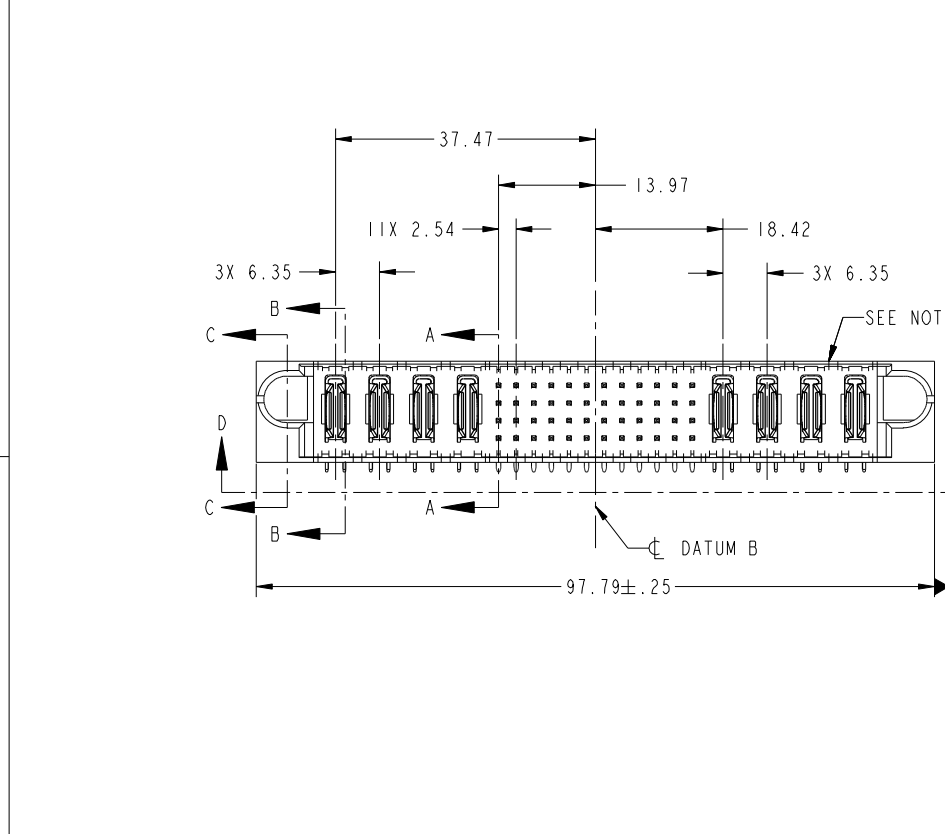
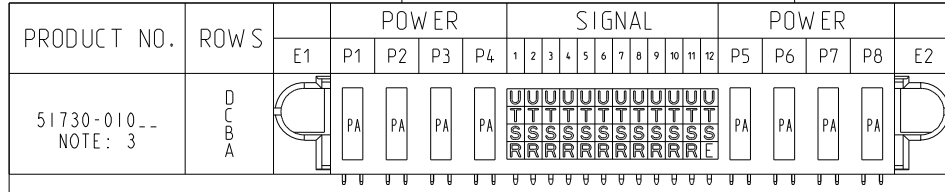


Tous droits strictement reserves. Reproduction ou communication a des tiers interdite sous quelque forme que ce soit sans autorisation écrite du propriétaire. Propriete de c FCI. Droits de reproduction FCI.



All rights strictly reserved. Reproduction or issue to third parties in any form whatever is not permitted without written authority from the proprietor. Property of FCI. Copyright FCI.



| CODE | DIM "M" MATING LENGTH | CONTACT TYPE |
|------|-----------------------|--------------|
| PA   | [N/A]                 | POWER        |
| U    | [6.86]                | SIGNAL       |
| T    | [6.86]                | SIGNAL       |
| S    | [6.86]                | SIGNAL       |
| R    | [6.86]                | SIGNAL       |
| E    | [5.59]                | SIGNAL       |

| mat'l code  |                |       |          | SEE NOTE |              | tolerances unless otherwise specified |                | CUSTOMER                  |          |
|-------------|----------------|-------|----------|----------|--------------|---------------------------------------|----------------|---------------------------|----------|
| litr        | ecn no.        | dr    | date     | linear   | 0.X ± 0.5    | COPY                                  |                | projection                |          |
| A           | V02906         | JRW   | 12/08/00 | angles   | 0.XX ± 0.25  | MIM                                   |                | title                     |          |
| B           | V20111         | JWS   | 01-21-02 |          | 0.XXX ± 0.10 | 1:1                                   |                | 4P + 48S + 4P             |          |
| C           | DG05-0389      | GuoJM | 10/14/05 |          | 0° ± 2°      | scale                                 |                | RIGHT ANGLE SOLDER HEADER |          |
| D           | DG08-0253      | SH    | 09/13/08 | dr       | J. SHAFFER   | 01-21-02                              | product family |                           | PwrBlade |
| E           | DG08-0272      | JW    | 09/29/08 | enrg     | M. MOSTOLLER | 01-21-02                              | size           | dwg no                    | 213      |
|             |                |       |          | chr      | M. MOSTOLLER | 01-21-02                              | A              | 51730-010                 | sheet    |
|             |                |       |          | appd     | M. MOSTOLLER | 01-21-02                              |                |                           | 1 of 4   |
| sheet index | revision sheet | E 1   | E 2      | E 3      | E 4          |                                       |                |                           |          |

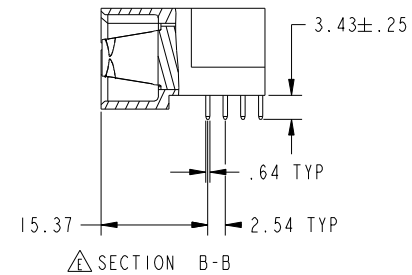
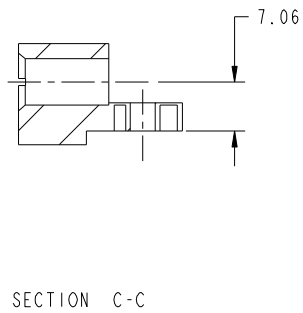
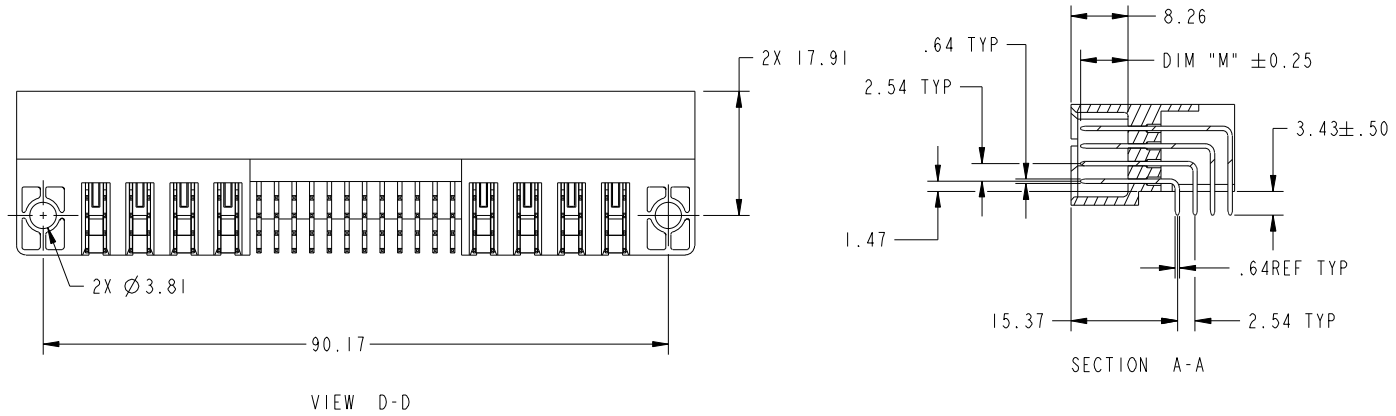
www.fciconnect.com  
**RIGHT ANGLE SOLDER HEADER**  
 product family PwrBlade code 213  
 size dwg no 51730-010 sheet 1 of 4  
 cage code 22526

Tous droits strictement reserves. Reproduction ou communication a des tiers interdite sous quelque forme que ce soit sans autorisation écrite du propriétaire. Propriete de c FCI. Droits de reproduction FCI.



All rights strictly reserved. Reproduction or issue to third parties in any form whatever is not permitted without written authority from the proprietor. Property of FCI. Copyright FCI.

PRODUCT NUMBER  
51730-010--  
NOTE: 3



|             |         |                |      |                                       |                       |            |  |                           |  |                    |  |
|-------------|---------|----------------|------|---------------------------------------|-----------------------|------------|--|---------------------------|--|--------------------|--|
| mat'l code  |         | SEE NOTE       |      | tolerances unless otherwise specified |                       | CUSTOMER   |  | FCI                       |  | www.fciconnect.com |  |
| ltr         | ecr no. | dr             | date | linear                                | 0.X ±0.5              | COPY       |  | title                     |  |                    |  |
| E           |         |                |      |                                       | 0.XX ±0.25            | projection |  | 4P + 48S + 4P             |  |                    |  |
|             |         |                |      | angles                                | 0.XXX ±0.10           | MIM        |  | RIGHT ANGLE SOLDER HEADER |  |                    |  |
|             |         |                |      | dr                                    | J. SHAFFER 01-21-02   | scale      |  | product family            |  | code               |  |
|             |         |                |      | enrg                                  | M. MOSTOLLER 01-21-02 | 1:1        |  | PwrBlade                  |  | 213                |  |
|             |         |                |      | chr                                   | M. MOSTOLLER 01-21-02 |            |  | size                      |  | sheet              |  |
|             |         |                |      | appd                                  | M. MOSTOLLER 01-21-02 |            |  | dwg no                    |  | 2                  |  |
| sheet index |         | revision sheet |      |                                       |                       |            |  | A                         |  | 51730-010          |  |

cage code 22526

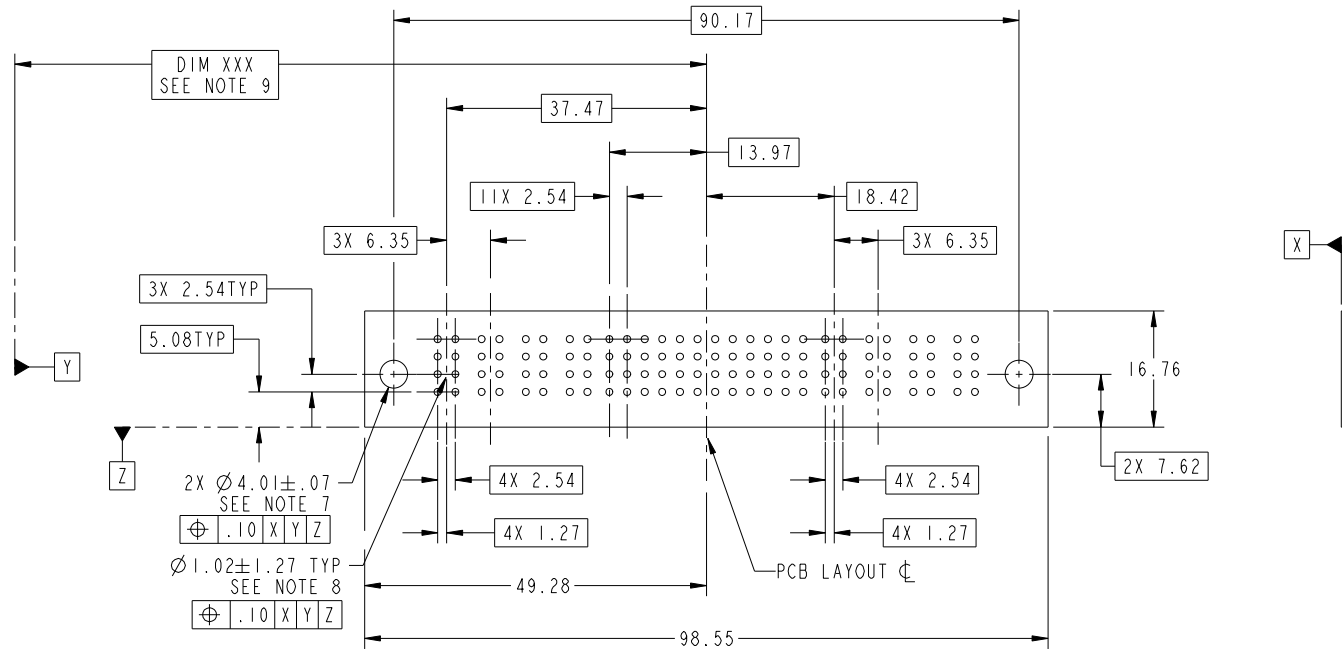
Pro/E

Tous droits strictement reserves. Reproduction ou communication a des tiers interdite sous quelque forme que ce soit sans autorisation écrite du propriétaire. Propriete de c FCI. Droits de reproduction FCI.



All rights strictly reserved. Reproduction or issue to third parties in any form whatever is not permitted without written authority from the proprietor. Property of FCI. Copyright FCI.

PRODUCT NUMBER  
51730-010--  
NOTE: 3



RECOMMENDED PCB LAYOUT

|             |                |          |      |                                       |                       |            |  |                              |  |
|-------------|----------------|----------|------|---------------------------------------|-----------------------|------------|--|------------------------------|--|
| mat'l code  |                | SEE NOTE |      | tolerances unless otherwise specified |                       | CUSTOMER   |  | www.fciconnect.com           |  |
| ltr         | ecn no.        | dr       | date | linear                                | 0.X ± 0.5             | COPY       |  | title                        |  |
| E           |                |          |      |                                       | 0.XX ± 0.25           | projection |  | 4P + 48S + 4P                |  |
|             |                |          |      | angles                                | 0.XXX ± 0.10          |            |  | RIGHT ANGLE SOLDER HEADER    |  |
|             |                |          |      | dr                                    | 0° + 2°               |            |  | product family PwrBlade code |  |
|             |                |          |      | enrg                                  | J. SHAFFER 01-21-02   | scale      |  | 213                          |  |
|             |                |          |      | chr                                   | M. MOSTOLLER 01-21-02 | 1:1        |  | sheet                        |  |
|             |                |          |      | appd                                  | M. MOSTOLLER 01-21-02 | A          |  | 3                            |  |
| sheet index | revision sheet |          |      |                                       |                       |            |  | 51730-010                    |  |

cage code 22526

Pro/E

Tous droits strictement reserves. Reproduction ou communication a des tiers interdite sous quelque forme que ce soit sans autorisation écrite du propriétaire. Propriete de c FCI. Droits de reproduction FCI.



All rights strictly reserved. Reproduction or issue to third parties in any form whatever is not permitted without written authority from the proprietor. Property of FCI. Copyright FCI.

|                        |
|------------------------|
| PRODUCT NUMBER         |
| 51730-010--<br>NOTE: 3 |

NOTES:

1. DIMENSIONS AND TOLERANCES ARE IN ACCORDANCE WITH ASME Y14.5M, 1994 UNLESS OTHERWISE SPECIFIED.

CONNECTORS NOTES:

2. HOUSING MATERIAL: UL 94 V-0 GLASS FILLED HIGH TEMP THERMO PLASTIC  
POWER CONTACT MATERIAL: COPPER ALLOY  
SIGNAL PIN MATERIAL: COPPER ALLOY

3. PLATING:

SEE ITEM 1 & 2 IN PRINT 10064183 FOR PLATING SPEC OF 51730-010 AND 51730-010LF RESPECTIVELY

4. "MANUFACTURER" NAME, P/N, AND DATE CODE TO APPEAR ON THIS SURFACE.

5. PRODUCT SPECIFICATION GS-12-149.

PCB - NOTES:

6. ALL HOLE DIAMETERS ARE FINISHED HOLE SIZE.

7. HOLD DOWN THROUGH HOLES ARE UNPLATED.

8.  $\varnothing 1.151 \pm 0.025$  DRILLED HOLES PLATED WITH 0.008 MIN SnPb OR Sn OVER 0.03 TO 0.08 Cu PLATING TO ACHIEVE  $\varnothing 1.02 \pm .07$  HOLE.

9. "DIM XXX" TO BE DETERMINED BY THE CUSTOMER.

10. A  $\triangle$  SYMBOL WILL BE NEXT TO ANY DIMENSION, VIEW, OR NOTE WHICH HAS BEEN MODIFIED WITH CURRENT DRAWING VERSION.

|             |         |                |      |          |              |                                       |            |          |                |                           |  |
|-------------|---------|----------------|------|----------|--------------|---------------------------------------|------------|----------|----------------|---------------------------|--|
| mat'l code  |         |                |      | SEE NOTE |              | tolerances unless otherwise specified |            | CUSTOMER |                | www.fciconnect.com        |  |
| ltr         | ecn no. | dr             | date | linear   | 0.X ± 0.5    |                                       | COPY       |          |                | title                     |  |
| E           |         |                |      |          | 0.XX ± 0.25  |                                       | projection |          |                | 4P + 48S + 4P             |  |
|             |         |                |      |          | 0.XXX ± 0.10 |                                       |            |          |                | RIGHT ANGLE SOLDER HEADER |  |
|             |         |                |      | angles   | 0° + 2°      |                                       |            |          | product family |                           |  |
|             |         |                |      |          | dr           | J. SHAFFER                            | 01-21-02   | PwrBlade |                | code                      |  |
|             |         |                |      | enrg     | M. MOSTOLLER | 01-21-02                              | size       |          | 213            |                           |  |
|             |         |                |      | chr      | M. MOSTOLLER | 01-21-02                              | dwg no     |          | sheet          |                           |  |
|             |         |                |      | appd     | M. MOSTOLLER | 01-21-02                              | scale      |          | 4              |                           |  |
| sheet index |         | revision sheet |      |          |              | 1:1                                   |            | A        |                | 51730-010                 |  |

cage code 22526

Pro/E