

ATLANTIC VERSION TERMINATOR INTERFACE ADAPTER	PART NUMBER	REVISION	DESCRIPTION	FEED TYPE	APPLICATOR STYLE CONVERSION CHART						
					CONVERT TO	PART NUMBERS REQUIRED					
	2151410-2	C	FINE CRIMP HEIGHT ADJUST	PNEUMATIC	-	-	-	-	-	-	
	2151410-5	C	FINE CRIMP HEIGHT ADJUST	SERVO LATCH PLATE <sup>4</sup>	SERVO LATCH PLATE	2119951-1	-	8-2151410-5	1901094-3	2-1752354-5	2168400-6 (QUANTITY 2)
					SMART APPLICATOR	2161326-1	-	8-2151410-4	-	-	-
	2151410-6	C	NON-CRIMP HEIGHT ADJUST	SERVO LATCH PLATE <sup>4</sup>	PNEUMATIC FEED	2119950-1	1338683-8	5-18022-5	2119641-1	2119799-1	2063440-1
					-	-	-	-	-	-	-
	2151410-7	C	FINE CRIMP HEIGHT ADJUST	NONE	-	-	-	-	-	-	-
	7-2151410-7	A	CRIMP TOOLING KIT	-	-	-	-	-	-	-	-

APPLICATOR DATA		
CRIMP	SIZE	TYPE
WIRE	3.56 mm [.140]	F
INSUL	5.16 mm [.203]	F

APPLICATOR INSTRUCTIONS 408-10389

TERMINAL DATA: MTA TERMINAL	MTA CRIMP SPECIFICATION		
TERMINAL NAME: TERMINAL UNI F630 WITH CLIP			
WIRE STRIP LENGTH	INSULATION DIAMETER RANGE		
4.87-5.63 mm [.192-.222 IN]	Ø 4.57 mm MAX [.180 IN MAX]		
TERMINAL APPLICATION SPECIFICATION	MTA SPEC Rev -		
TERMINALS APPLIED <sup>10</sup>			
TE TERMINAL	MTA TERMINAL	TE TERMINAL	MTA TERMINAL
1949669-1	17.0794/10		

WIRE SIZE	CRIMP HEIGHT mm [INCH]	CRIMP HEIGHT REFERENCE SETTING
6.00mm2	2.55+/-0.05 [.100+/- .002]	4.4
5.00mm2	2.49+/-0.05 [.098+/- .002]	5.0
4.00mm2	2.40+/-0.05 [.094+/- .002]	5.8

- <sup>1</sup> RECOMMENDED SPARE PARTS
- <sup>2</sup> GREASE BEARING SURFACES LIGHTLY
- 3. LUBRICATE DAILY PER THE APPLICATOR INSTRUCTION SHEET SUPPLIED WITH THE APPLICATOR.
- <sup>4</sup> APPLICATOR SPECIFIC DATA TO BE ENTERED INTO BLANK MEMORY CHIP AT ASSEMBLY. SEE BELOW FOR PART NUMBER:  
 PNEUMATIC FEED WITH "SMART APPLICATOR" CONVERSION: 8-2151410-4  
 SERVO FEED WITH "FINE CRIMP HEIGHT ADJUST": 8-2151410-5  
 SERVO FEED WITH "NON-CRIMP HEIGHT ADJUST": 8-2151410-6
- 5. ADJUSTMENT OF THE STRIPPER MAY BE REQUIRED WHEN MOVING THE APPLICATOR BETWEEN BENCH AND LEADMAKER APPLICATIONS.
- <sup>6</sup> APPLY PART NUMBER 1-23419-5 LOCTITE TO THREADS OF ITEM 62.  
 APPLY PART NUMBER 2-23419-6 LOCTITE TO THREADS OF ITEM 242.  
 FOR -6 ONLY APPLY PART NUMBER 1-23419-5 LOCTITE TO THREADS OF ITEM 37.
- <sup>7</sup> GREASE THREADS, GROOVE AND O-RING ON ITEMS 35 & 252.
- <sup>8</sup> MAGNET, ITEM 166 MUST BE ORIENTED CORRECTLY IN ORDER TO PROPERLY ACTUATE THE COUNTER.
- <sup>9</sup> CRIMP HEIGHT REFERENCE SETTING WAS THE SETTING USED WHEN THE APPLICATOR WAS QUALIFIED AT THE FACTORY. ADJUSTMENT MAY BE NECESSARY WHEN RUNNING APPLICATOR IN THE FIELD.
- <sup>10</sup> TERMINAL PITCH NOT COMPATIBLE WITH MECHANICAL FEED.
- <sup>11</sup> TO CONVERT THE APPLICATOR TO A NON-CARRIER CUTTING STYLE, REMOVE ITEM 13 AND ATTACH TO THE LOCATION ON THE BACK SIDE OF THE HOUSING. REFER TO INSTRUCTION SHEET FOR ADDITIONAL INFORMATION.
- <sup>12</sup> WHEN ASSEMBLING A NON CRIMP HEIGHT ADJUST APPLICATOR (-6) USE SHIMS FROM ITEM 260 TO ACHIEVE A NOMINAL SHIM HEIGHT OF 3.25.

**\*WARNING**  
 ON INSTALLATION, SET WIRE DISC, ITEM 40 TO LARGEST WIRE SIZE SETTING. USE OF SETTINGS BELOW MINIMUM REQUIRED CRIMP HEIGHT SETTING WILL CAUSE DAMAGE TO CRIMP TOOLING.

- 2	2	2	2	2168083-1	SCR, SKT HD CAP, RoHS, M3 X 8.0	268	
- 1	1	1	1	1633782-8	FENCE	267	
- -	- 1	- -	- -	2119957-2	APPLICATOR SHIM PACK	260	
-77	-7	-6	-5	-2	PART NO	DESCRIPTION	ITEM NO

**ATLANTIC VERSION**  
 Shown on sheets 1 of 4 & 2 of 4  
 (Pacific version shown on sheets 3 of 4 & 4 of 4)

SET UP GAUGE	LOC	DIST	REVISIONS					
2119599-1	A	66	P	LTN	DESCRIPTION	DATE	OWN	APVD
			C		ECR-15-010742	17JUL2015	MR	JDG

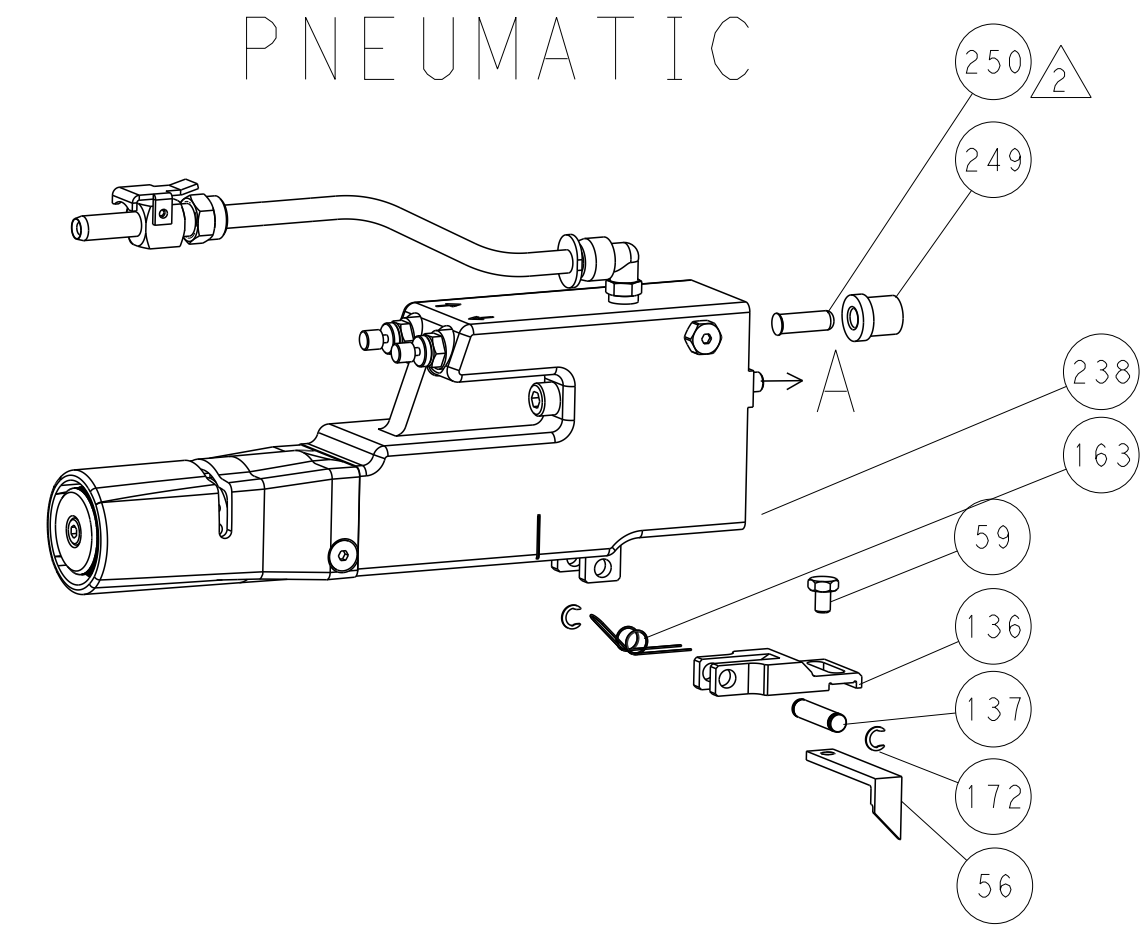
- 1	1	1	1	1803078-2	SPACER, PRECISION	259	
- 1	- 1	1	1	8-21084-0	O-RING, .676 ID, .070 DIA. MAT.	252	
- -	- -	- 1	1	2119640-1	PUSH ROD, AIR FEED	250	
- -	- -	- 1	1	2079988-1	BUSHING, LCH5-12, MISUMI	249	
- -	- -	- 1	1	2119641-1	FEED CAM, AIR FEED	248	
- 1	- 1	1	1	2119798-1	DETENT PIN	247	
- 1	- 1	1	1	1-22279-3	SPRING, COMPRESSION	246	
- -	- 1	- -	- -	2161314-1	RAM, STEPPED, ATLANTIC, SF, NON-ADJ	245	
- 1	1	1	1	2119082-2	CAM, SNAIL, INSULATION ADJUSTMENT	244	
- 1	1	1	1	2079764-1	WASHER, WAVE SPRING, CREST-TO-CREST	243	
- 1	1	1	1	2119083-1	RETAINER, INSULATION DIAL	242	
- -	- 2	2	-	2168400-6	SHCS, LOW HEAD, RoHS, M5 X 16	240	
- -	- -	- 1	-	2063440-1	AIR FEED MODULE	238	
- -	- 1	1	-	2119740-2	TAG, IDENTIFICATION	213	
- -	- 1	1	-	1901094-3	SPACER, FEEDER	198	
- -	- -	- 2	-	21045-3	RING, RETAIN, EXTERN, 3/16 CRESCENT	172	
- 1	1	1	1	994969-1	MAGNET, RARE EARTH HIGH ENERGY	166	
- REF	REF	REF	REF	994970-2	COUNTER, MAGNETIC	164	
- -	- -	- 1	-	240638-1	SPRING, FEED FINGER	163	
- -	- -	- 1	-	3-23627-7	PIN, RETAIN, GRVD, 3/16 X .854	137	
- -	- -	- 1	-	2119799-1	HOLDER, FEED FINGER, AF	136	
- -	- REF	REF	-	SEE NOTE 4	MEMORY CHIP, PROGRAMMED	135	
- -	- 1	1	-	1633743-1	SERVO FEED LATCH ASM	133	
- 1	1	1	1	1-18028-2	WASHER, FLAT, REG M4	119	
- -	- REF	REF	-	2119944-1	FEED FINGER ASSEMBLY, SF	117	
- 1	1	1	1	1-690438-0	FRONT STRIP GUIDE	96	
- 1	1	1	1	1-455888-7	SPACER, CRIMPER	82	
- 1	1	1	1	2119956-1	DOCUMENTATION PACKAGE	71	
- 1	- -	- 1	-	2119740-1	TAG, IDENTIFICATION	67	
- 2	2	2	2	2168078-1	SCREW, DRIVE, RH, RoHS, 2 x .188	66	
- 1	- 1	1	1	2119793-1	LIMITER, ADJUSTMENT BOLT	63	
- 3	- 3	3	3	992763-5	SCR, SET, SOC, CONE POINT, M3 x 4.0	62	
- 1	1	1	1	2079383-4	SCR, BHSC, RoHS (M4 X 8)	60	
- -	- -	- 1	-	5-18022-5	SCR, HEX HD CAP, M4 X 6.0	59	
- -	- -	- 1	-	1338683-8	FEED PAWL	56	
- 4	4	4	4	2168400-1	SHCS, LOW HEAD, RoHS, M4 X 12	54	
- 2	2	2	2	1-2168083-0	SCR, SKT HD CAP, RoHS, M4 X 10	53	
- 1	1	1	1	5018030-1	NUT, HEX, REG, RoHS, M3	52	
- 1	1	1	1	811242-5	BUMPER, HOLD DOWN	51	
- 1	1	1	1	690753-2	SPACER, TONKER	50	
- -	- -	- 1	-	18023-9	SCR, SKT HD CAP M4 X 6.0	49	
- 1	1	1	1	1-2119656-7	APPLICATOR BASIC ASSEMBLY, SF	46	
- 1	- 1	1	1	2161311-1	RAM, STEPPED, AMP STYLE, SIDE FEED	44	
- 1	1	1	1	1-2079383-5	SCR, BHSC, RoHS (M8 X 40)	41	
- 1	- 1	1	1	2119645-1	DISC, NUMBERED FA WIRE ADJUSTMENT	40	
- 1	- 1	1	1	2119957-1	APPLICATOR SHIM PACK	39	
- 1	1	1	1	1-2119644-3	RAM WASHER, PRECISION	38	
- 1	1	1	1	2119085-1	FA HEAD, ATLANTIC STYLE	37	
- 1	- 1	1	1	2119092-1	BOLT, ADJUSTMENT	35	
- 1	1	1	1	1752356-6	SUPPORT, TERMINAL	34	
- 2	2	2	2	2079383-5	SCR, BHSC, RoHS (M4 X 20)	33	
- 1	1	1	1	2161328-1	HEX HEAD, FLANGED, M5 x 8mm LONG	32	
- 1	1	1	1	1320908-7	SPACER, STRIP GUIDE	30	
- 1	1	1	1	2119959-5	ASSEMBLY, STRIP GUIDE	29	
- 1	1	1	1	2119791-5	DEPRESSOR, WIRE	28	
- 2	2	2	2	22283-1	SPRING, COMPRESSION	27	
- 1	1	1	1	240792-1	DRAG, TERMINAL	25	
- 1	1	1	1	1320928-2	STRIP GUIDE	24	
- 1	1	1	1	2168083-2	SCR, SKT HD CAP, RoHS, M4 X 8.0	21	
- 1	1	1	1	1-18028-2	WASHER, FLAT, REG M4	20	
- 1	1	1	1	2119533-1	STRIPPER, SIDE FEED	19	
- 1	1	1	1	3-22280-3	SPRING, COMPRESSION	12	
- 1	1	1	1	1-356885-4	STOP, SHEAR	11	
- 1	1	1	1	1-2119805-8	SHEAR HOLDER, FRONT	10	
- 1	1	1	1	1-318059-0	FLOATING SHEAR, FRONT	9	
1	1	1	1	1	4-1633621-4	ANVIL, COMBINATION	8
- -	- -	- -	- -	-	-	7	
- -	- -	- -	- -	-	-	6	
- 1	1	1	1	1-1803080-0	DEPRESSOR, SHEAR	5	
- 1	1	1	1	1-238011-9	BLOCK, CRIMPER SPACER	4	
1	1	1	1	1	5-1803016-3	CRIMPER, INSULATION F	3
- 1	1	1	1	1	455888-4	SPACER, CRIMPER	2
1	1	1	1	1	456411-3	CRIMPER, WIRE PREMIUM	1
-77	-7	-6	-5	-2	PART NO	DESCRIPTION	ITEM NO

DIMENSIONS:		TOLERANCES UNLESS OTHERWISE SPECIFIED:		DRAWN BY		DATE		CHECKED BY		DATE			
mm	0 PLC ±.05	1 PLC ±.05	2 PLC ±.05	3 PLC ±.05	4 PLC ±.05	Y. YIN	27FEB2015	G. BAILEY	27FEB2015	TE Connectivity Harrisburg, PA 17105-3608			
	ANGLES ±.0001	FINISH				U. GUO	27FEB2015			NAME Ocean Side Feed Applicator			
MATERIAL										SIZE	CAGE CODE	DRAWING NO	RESTRICTED TO
										A1	00779	2151410	
Customer Accessible Production Drawing										SCALE	1:2	SHEET	1 OF 4

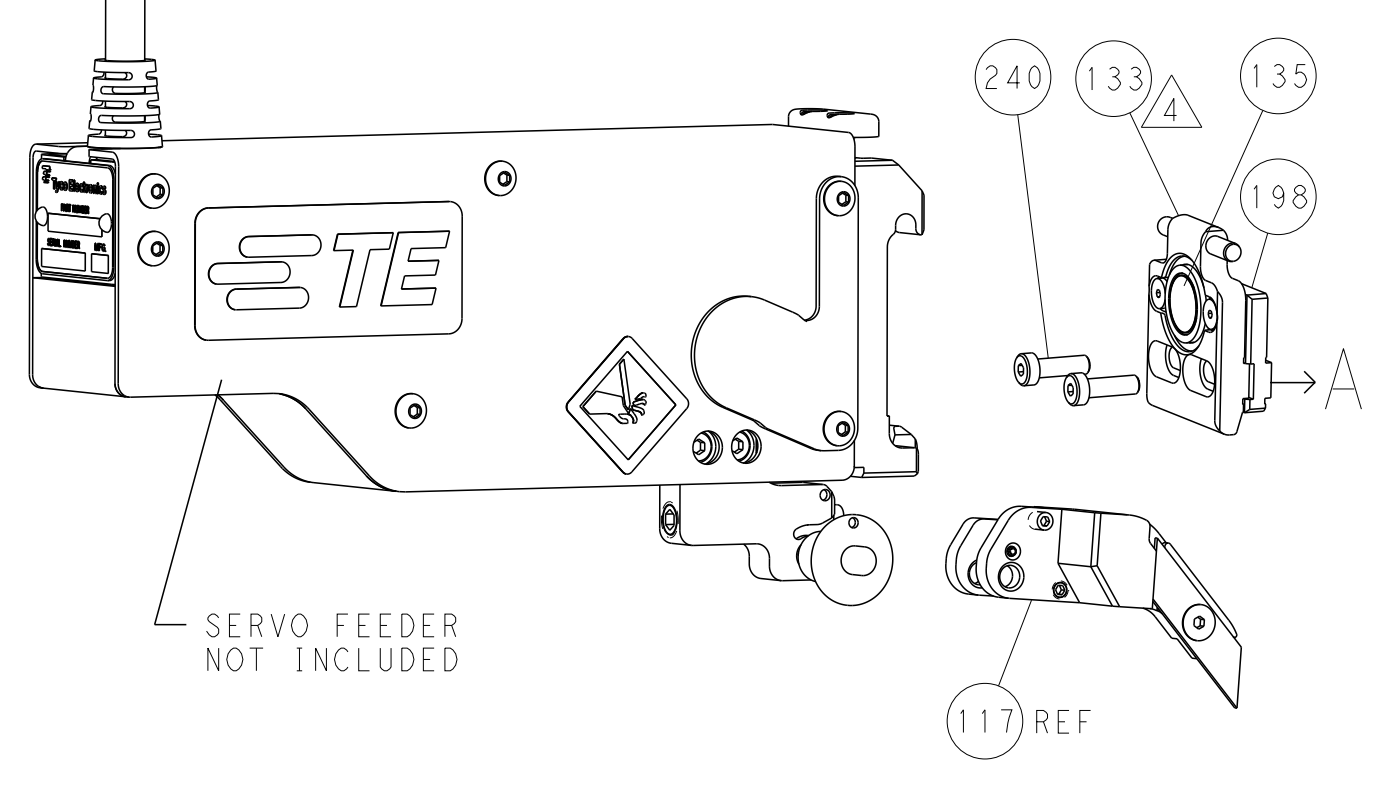
LOC		DIST		REVISIONS			
P	LTN	DESCRIPTION	DATE	OWN	APVD		
A	66	SEE SHEET 1					

### FEED TYPE

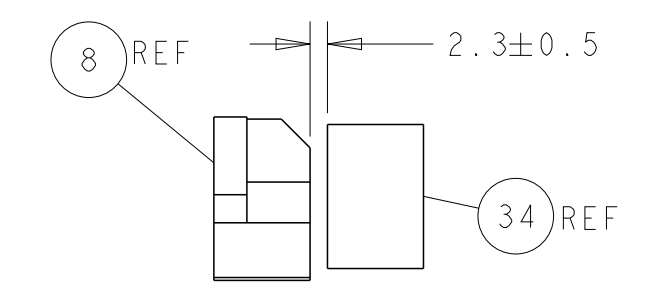
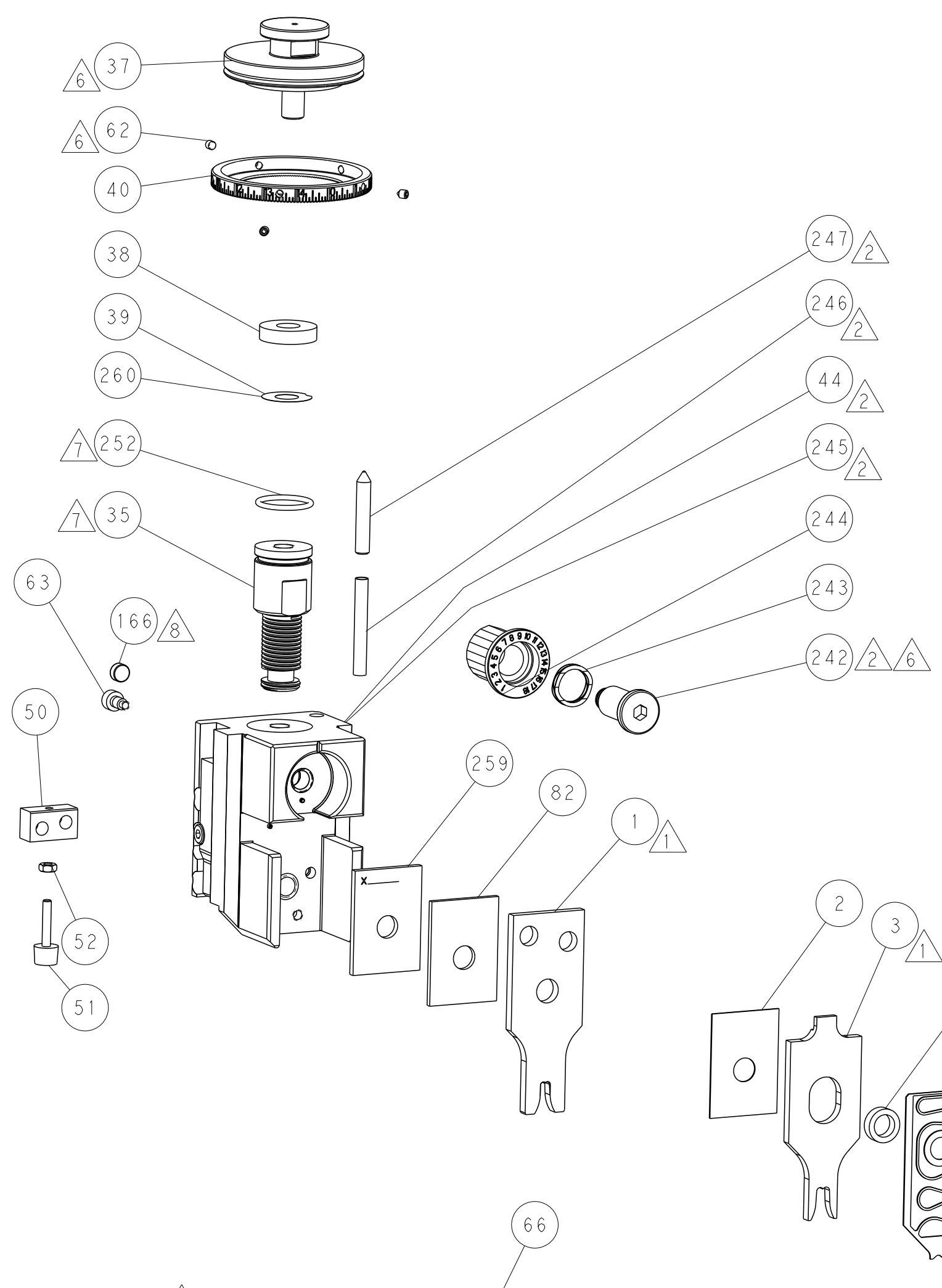
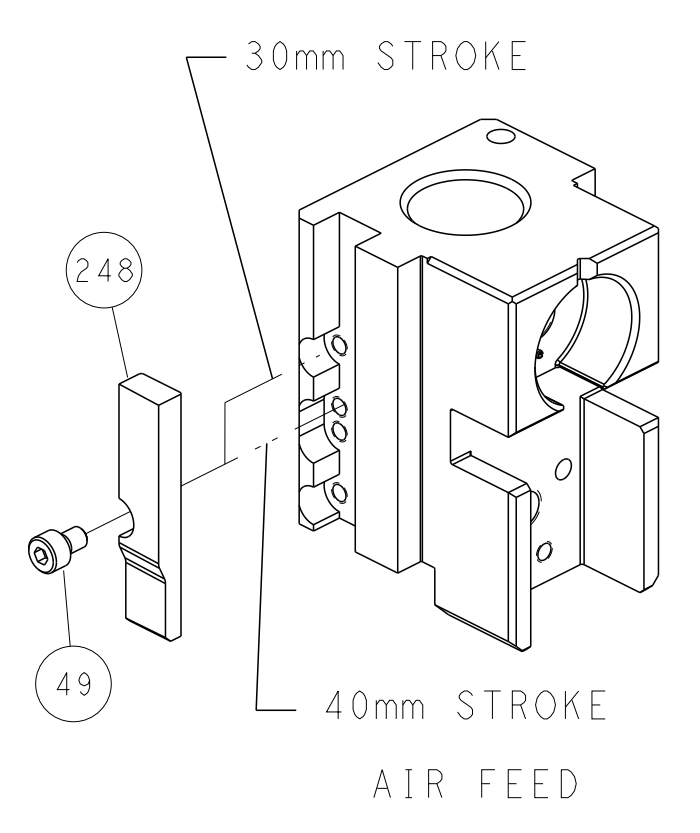
### PNEUMATIC



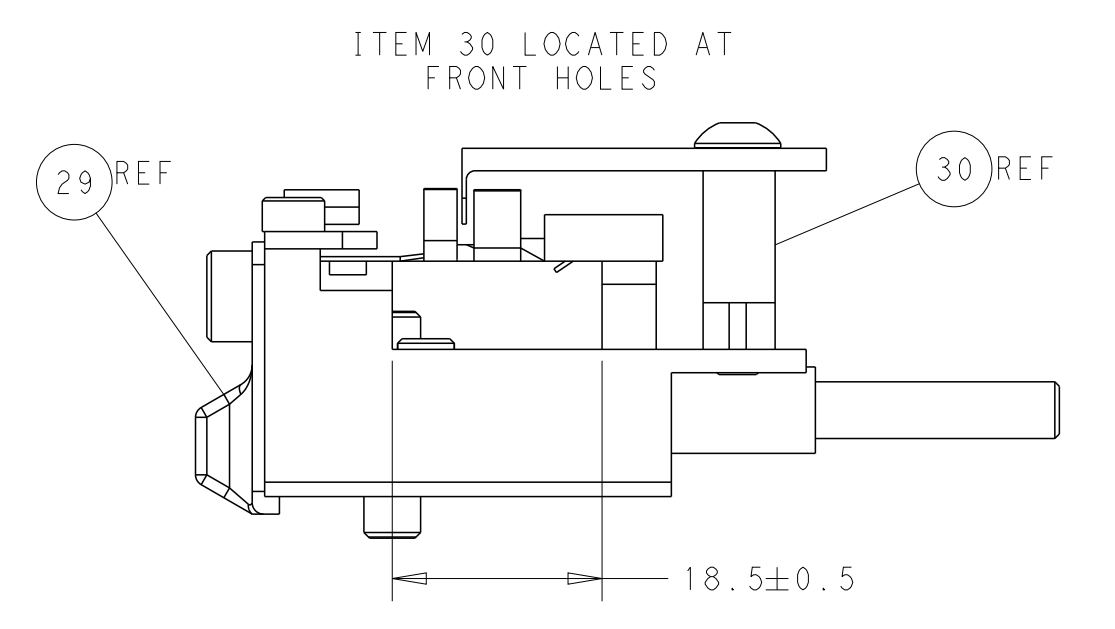
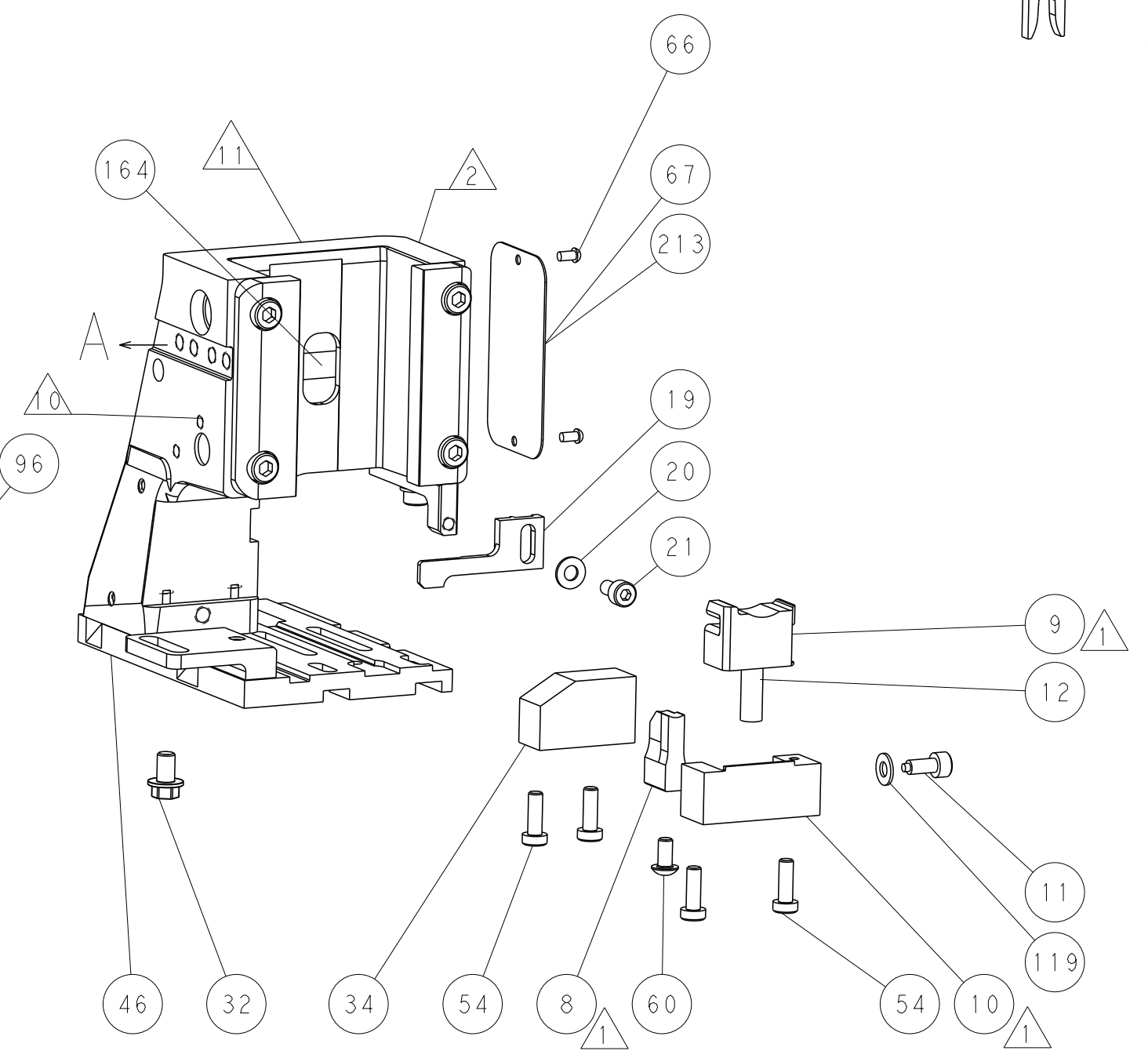
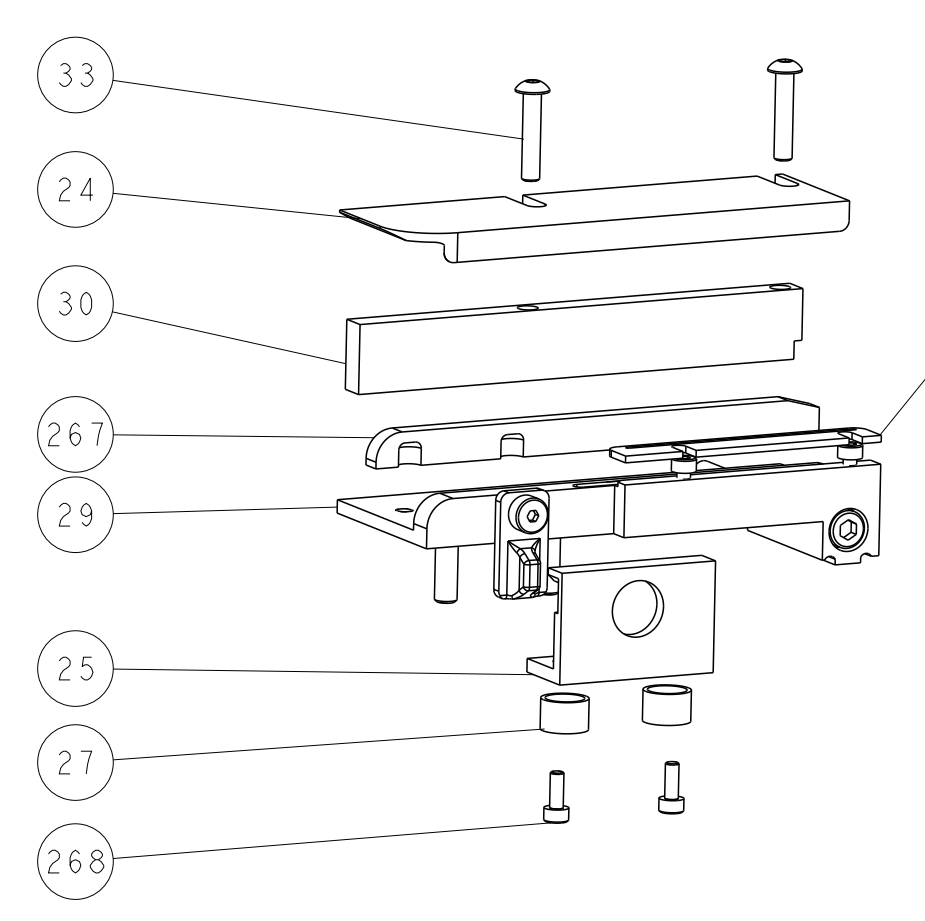
### SERVO LATCH PLATE



### CAM POSITION



TERMINAL SUPPORT LOCATION



FEED TRACK POSITION GUIDE BY INSULATION BARREL

**ATLANTIC VERSION**  
 Shown on sheets 1 of 4 & 2 of 4  
 (Pacific version shown on sheets 3 of 4 & 4 of 4)

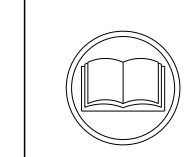
DIMENSIONS:		TOLERANCES UNLESS OTHERWISE SPECIFIED:		DWG: Y. YIN 27FEB2015		TE Connectivity	
mm	0 PLC ±0.5	1 PLC ±0.5	2 PLC ±0.13	3 PLC ±0.13	4 PLC ±0.001	APVD: G. BAILEY 27FEB2015	Harrisburg, PA 17105-3608
MATERIAL:		FINISH:		NAME: Ocean Side Feed Applicator		RESTRICTED TO:	
				SIZE: A1		CAGE CODE: 00779	
				DRAWING NO: C=2151410		SCALE: 1:2	
				WEIGHT:		SHEET 2 OF 4	
				Customer Accessible Production Drawing		REV C	

PACIFIC VERSION TERMINATOR INTERFACE ADAPTER	PART NUMBER	REVISION	DESCRIPTION	FEED TYPE	CONVERT TO	PART NUMBERS REQUIRED					
	2-2151410-2	C	FINE CRIMP HEIGHT ADJUST	PNEUMATIC	SERVO LATCH PLATE	2119951-1	-	8-2151410-5	1901094-3	2-1752354-5	2168400-6 (QUANTITY 2)
	2-2151410-5	C	FINE CRIMP HEIGHT ADJUST	SERVO LATCH PLATE $\Delta$	SMART APPLICATOR	2161326-1	-	8-2151410-4	-	-	-
	2-2151410-7	C	FINE CRIMP HEIGHT ADJUST	NONE	PNEUMATIC FEED	2119950-1	1338683-8	5-18022-5	2119641-2	2119799-1	2063440-1
	7-2151410-7	A	CRIMP TOOLING KIT	-	-	-	-	-	-	-	-

APPLICATOR DATA		
CRIMP	SIZE	TYPE
WIRE	3.56 mm [1.40]	F
INSUL	5.16 mm [2.03]	F
APPLICATOR INSTRUCTIONS 408-10389		

TERMINAL DATA: MTA TERMINAL		MTA CRIMP SPECIFICATION	
TERMINAL NAME: TERMINAL UNI F630 WITH CLIP			
WIRE STRIP LENGTH		INSULATION DIAMETER RANGE	
4.87-5.63 mm [1.92-.222 IN]		$\varnothing$ 4.57 mm MAX [1.80 IN MAX]	
TERMINAL APPLICATION SPECIFICATION	MTA SPEC Rev -	-	-
TERMINALS APPLIED $\Delta$			
TE TERMINAL	MTA TERMINAL	TE TERMINAL	MTA TERMINAL
1949669-1	17.0794 /10		

WIRE SIZE	CRIMP HEIGHT mm [INCH]	CRIMP HEIGHT REFERENCE SETTING
6.00mm2	2.55+/-0.05 [1.00+/-0.02]	4.4
5.00mm2	2.49+/-0.05 [1.098+/-0.02]	5.0
4.00mm2	2.40+/-0.05 [1.094+/-0.02]	5.8



- $\Delta$  1 RECOMMENDED SPARE PARTS
- $\Delta$  2 GREASE BEARING SURFACES LIGHTLY
3. LUBRICATE DAILY PER THE APPLICATOR INSTRUCTION SHEET SUPPLIED WITH THE APPLICATOR.
- $\Delta$  4 APPLICATOR SPECIFIC DATA TO BE ENTERED INTO BLANK MEMORY CHIP AT ASSEMBLY. SEE BELOW FOR PART NUMBER:  
PNEUMATIC FEED WITH "SMART APPLICATOR" CONVERSION: 8-2151410-4  
SERVO FEED WITH "FINE CRIMP HEIGHT ADJUST": 8-2151410-5
5. ADJUSTMENT OF THE STRIPPER MAY BE REQUIRED WHEN MOVING THE APPLICATOR BETWEEN BENCH AND LEADMAKER APPLICATIONS.
- $\Delta$  6 APPLY PART NUMBER 1-23419-5 LOCTITE TO THREADS OF ITEM 62.  
APPLY PART NUMBER 2-23419-6 LOCTITE TO THREADS OF ITEM 242.
- $\Delta$  7 GREASE THREADS, GROOVE AND O-RING ON ITEMS 139 & 152.
- $\Delta$  8 MAGNET MUST BE ORIENTED CORRECTLY IN ORDER TO PROPERLY ACTUATE THE COUNTER.
- $\Delta$  9 CRIMP HEIGHT REFERENCE SETTING WAS THE SETTING USED WHEN THE APPLICATOR WAS QUALIFIED AT THE FACTORY. ADJUSTMENT MAY BE NECESSARY WHEN RUNNING APPLICATOR IN THE FIELD.
- $\Delta$  10 TERMINAL PITCH NOT COMPATIBLE WITH MECHANICAL FEED.
- $\Delta$  11 TO CONVERT THE APPLICATOR TO A NON-CARRIER CUTTING STYLE, REMOVE ITEM 13 AND ATTACH TO THE LOCATION ON BACK SIDE OF THE HOUSING. REFER TO INSTRUCTION SHEET FOR ADDITIONAL INFORMATION.

**\*WARNING**  
ON INSTALLATION, SET WIRE DISC, ITEM 40 TO LARGEST WIRE SIZE SETTING. USE OF SETTINGS BELOW MINIMUM REQUIRED CRIMP HEIGHT SETTING WILL CAUSE DAMAGE TO CRIMP TOOLING.

-	2	2	2	2168083-1	SCR, SKT HD CAP, RoHS, M3 X 8.0	268
-77	-27	-25	-22	PART NO	DESCRIPTION	ITEM NO

**PACIFIC VERSION**  
Shown on sheets 3 of 4 & 4 of 4  
(Atlantic version shown on sheets 1 of 4 & 2 of 4)

SET UP GAUGE	LOC	DIST	REVISIONS					
2119599-1	A	66	P	LTN	DESCRIPTION	DATE	OWN	APVD
-	-	-	-	-	SEE SHEET 1	-	-	-

-	1	1	1	1633782-8	FENCE			267
-	1	1	1	1803078-2	SPACER, PRECISION			259
-	1	1	1	2119782-1	FINE ADJUST HEAD ASM, PACIFIC STYLE			251
-	-	-	1	2119640-1	PUSH ROD, AIR FEED			250
-	-	-	1	2079988-1	BUSHING, LCH5-12, MISUMI			249
-	1	1	1	1-22279-3	SPRING, COMPRESSION			246
-	1	1	1	2119082-2	CAM, SNAIL, INSULATION ADJUSTMENT			244
-	1	1	1	2079764-1	WASHER, WAVE SPRING, CREST-TO-CREST			243
$\Delta$ 6	-	1	1	2119083-1	RETAINER, INSULATION DIAL			242
-	-	2	-	2168400-6	SHCS, LOW HEAD, RoHS, M5 X 16			240
-	-	-	1	2063440-1	AIR FEED MODULE			238
-	-	1	-	2119740-2	TAG, IDENTIFICATION			213
-	-	1	-	1901094-3	SPACER, FEEDER			198
-	-	-	2	21045-3	RING, RETAIN, EXTERN, 3/16 CRESCENT			172
$\Delta$ 8	-	1	1	994969-1	MAGNET, RARE EARTH HIGH ENERGY			166
-	REF	REF	REF	994970-2	COUNTER, MAGNETIC			164
-	-	-	1	240638-1	SPRING, FEED FINGER			163
$\Delta$ 7	-	1	1	8-21084-1	O-RING, .801 ID, .070 DIA, MAT.			152
-	-	-	1	2119641-2	FEED CAM, AIR FEED			151
-	1	1	1	2119798-2	DETENT PIN			145
-	1	1	1	2079383-8	SCR, BHSC, RoHS (M4 X 16)			144
-	4	4	4	2168400-5	SHCS, LOW HEAD, RoHS, M4 X 20			143
-	1	1	1	1-2119656-8	APPLICATOR BASIC ASSEMBLY, SF			141
-	1	1	1	2161312-1	RAM, STEPPED, ASIAN STYLE, SIDE FEED			140
$\Delta$ 7	-	1	1	2119092-2	BOLT, ADJUSTMENT			139
-	-	-	1	3-23627-7	PIN, RETAIN, GRVD, 3/16 X .854			137
-	-	-	1	2119799-1	HOLDER, FEED FINGER, AF			136
-	-	REF	-	SEE NOTE 4	MEMORY CHIP, PROGRAMMED			135
-	-	1	-	1633743-1	SERVO FEED LATCH ASM			133
-	1	1	1	1-18028-2	WASHER, FLAT, REG M4			119
-	-	REF	-	2119944-1	FEED FINGER ASSEMBLY, SF			117
-	1	1	1	1-690438-0	FRONT STRIP GUIDE			96
-	1	1	1	1-455888-7	SPACER, CRIMPER			82
-	1	1	1	2119956-1	DOCUMENTATION PACKAGE			71
-	1	-	1	2119740-1	TAG, IDENTIFICATION			67
-	2	2	2	2168078-1	SCREW, DRIVE, RH, RoHS, 2 x .188			66
-	1	1	1	2119793-1	LIMITER, ADJUSTMENT BOLT			63
-	3	3	3	992763-5	SCR, SET, SOC, CONE POINT, M3 X 4.0			62
$\Delta$ 6	-	-	1	5-18022-5	SCR, HEX HD CAP, M4 X 6.0			59
-	-	-	1	1338683-8	FEED PAWL			56
-	2	2	2	1-2168083-0	SCR, SKT HD CAP, RoHS, M4 X 10			53
-	1	1	1	5018030-1	NUT, HEX, REG, RoHS, M3			52
-	1	1	1	811242-5	BUMPER, HOLD DOWN			51
-	1	1	1	690753-2	SPACER, TONKER			50
-	-	-	1	18023-9	SCR, SKT HD CAP M4 X 6.0			49
-	1	1	1	1-2079383-5	SCR, BHSC, RoHS (M8 X 40)			41
-	1	1	1	2119645-1	DISC, NUMBERED FA WIRE ADJUSTMENT			40
-	1	1	1	2119957-1	APPLICATOR SHIM PACK			39
-	1	1	1	1-2119644-3	RAM WASHER, PRECISION			38
-	1	1	1	1752356-6	SUPPORT, TERMINAL			34
-	2	2	2	2079383-5	SCR, BHSC, RoHS (M4 X 20)			33
-	1	1	1	2161328-1	HEX HEAD, FLANGED, M5 X 8mm LONG			32
-	1	1	1	1320908-7	SPACER, STRIP GUIDE			30
-	1	1	1	2119959-5	ASSEMBLY, STRIP GUIDE			29
-	1	1	1	2119791-5	DEPRESSOR, WIRE			28
-	2	2	2	22283-1	SPRING, COMPRESSION			27
-	1	1	1	240792-1	DRAG, TERMINAL			25
-	1	1	1	1320928-2	STRIP GUIDE			24
-	1	1	1	2168083-2	SCR, SKT HD CAP, RoHS, M4 X 8.0			21
-	1	1	1	1-18028-2	WASHER, FLAT, REG M4			20
-	1	1	1	2119533-1	STRIPPER, SIDE FEED			19
-	1	1	1	3-22280-3	SPRING, COMPRESSION			12
-	1	1	1	1-356885-4	STOP, SHEAR			11
$\Delta$ 1	-	1	1	1-2119805-8	SHEAR HOLDER, FRONT			10
$\Delta$ 1	-	1	1	1-318059-0	FLOATING SHEAR, FRONT			9
$\Delta$ 1	1	1	1	4-1633621-4	ANVIL, COMBINATION			8
-	-	-	-	-	-			7
-	-	-	-	-	-			6
-	1	1	1	1-1803080-0	DEPRESSOR, SHEAR			5
-	1	1	1	1-238011-9	BLOCK, CRIMPER SPACER			4
$\Delta$ 1	1	1	1	5-1803016-3	CRIMPER, INSULATION F			3
-	1	1	1	455888-4	SPACER, CRIMPER			2
$\Delta$ 1	1	1	1	456411-3	CRIMPER, WIRE PREMIUM			1
-77	-27	-25	-22	PART NO	DESCRIPTION	ITEM NO		

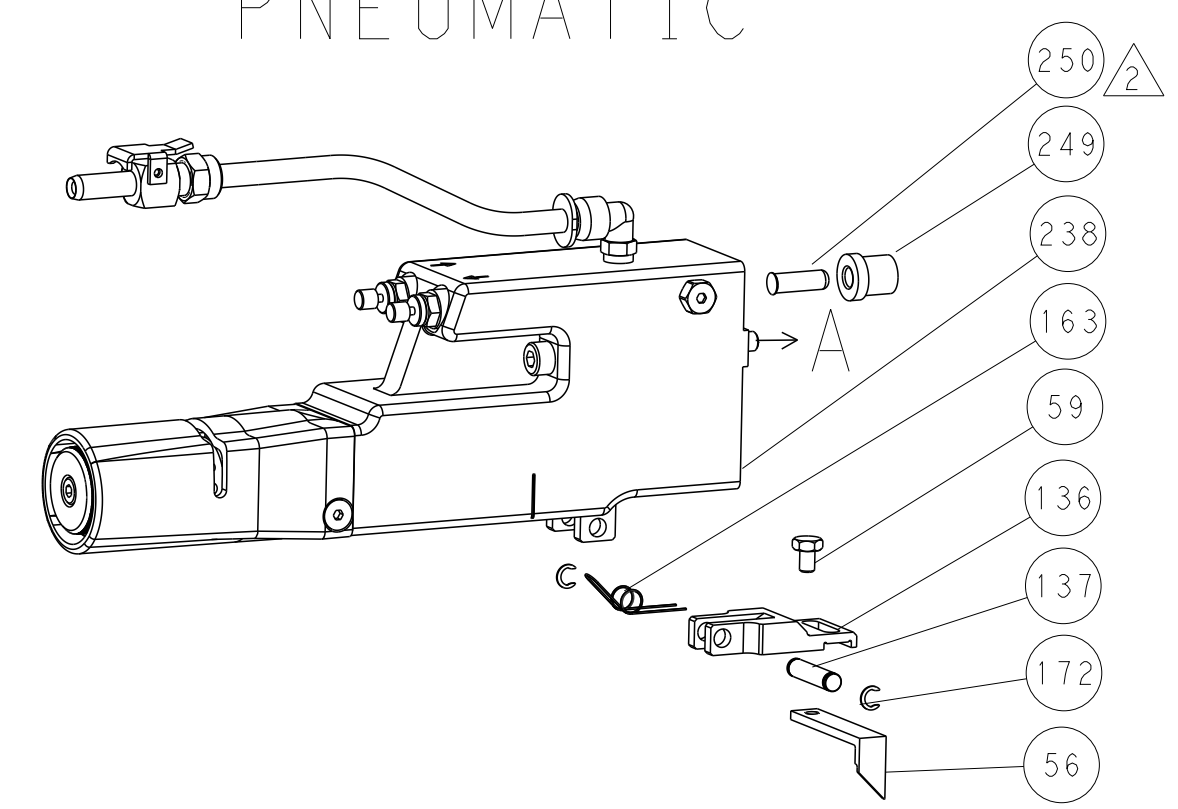
DIMENSIONS:		TOLERANCES UNLESS OTHERWISE SPECIFIED:		OWN	CHK	DATE	NAME	RESTRICTED TO	
mm	0 PLC	$\pm$	0.5	Y. YIN	G. BAILEY	27FEB2015	U. GUO	27FEB2015	Customer Accessible Production Drawing
	1 PLC	$\pm$	0.5						SCALE 1:2 SHEET 3 OF 4 REV C
	2 PLC	$\pm$	0.13						
	3 PLC	$\pm$	0.13						
	4 PLC	$\pm$	0.013						
	5 PLC	$\pm$	0.001						
	ANGLES	$\pm$	0.0001						
	FINISH								

**STE** TE Connectivity  
Harrisburg, PA 17105-3608

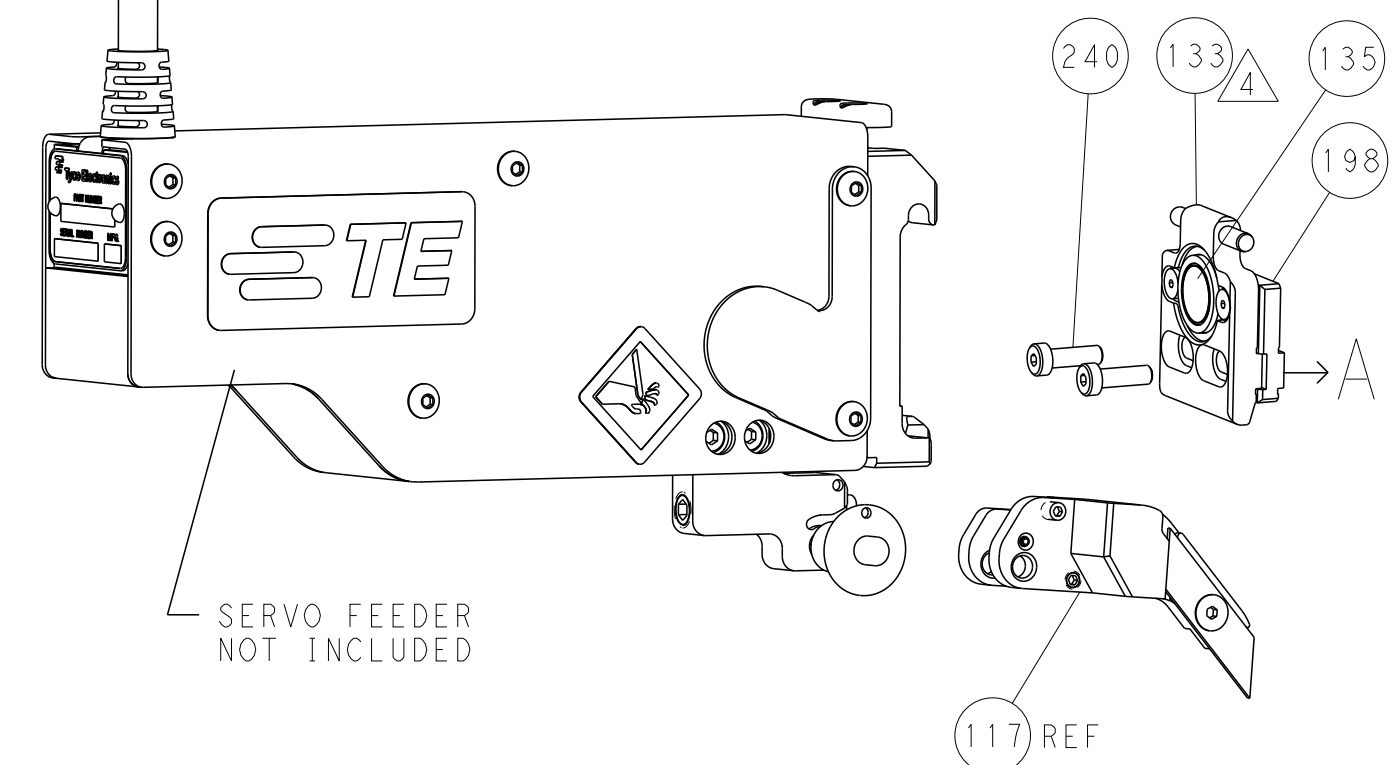
Ocean Side Feed  
Applicator

LOC	DIST	REV	DATE	BY	APPV
A	66				

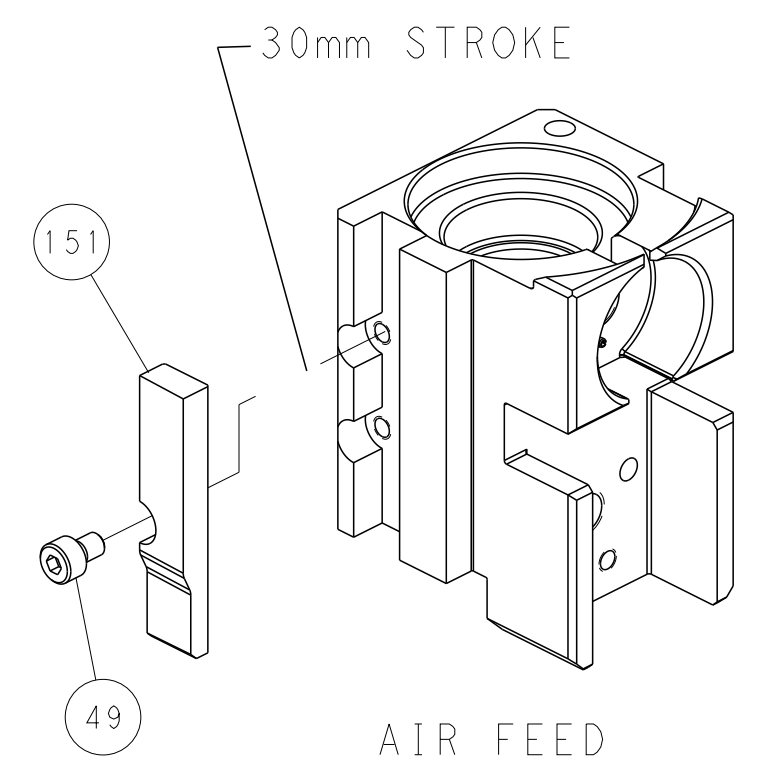
### FEED TYPE PNEUMATIC



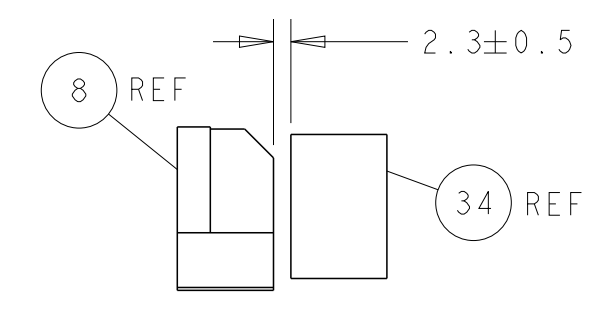
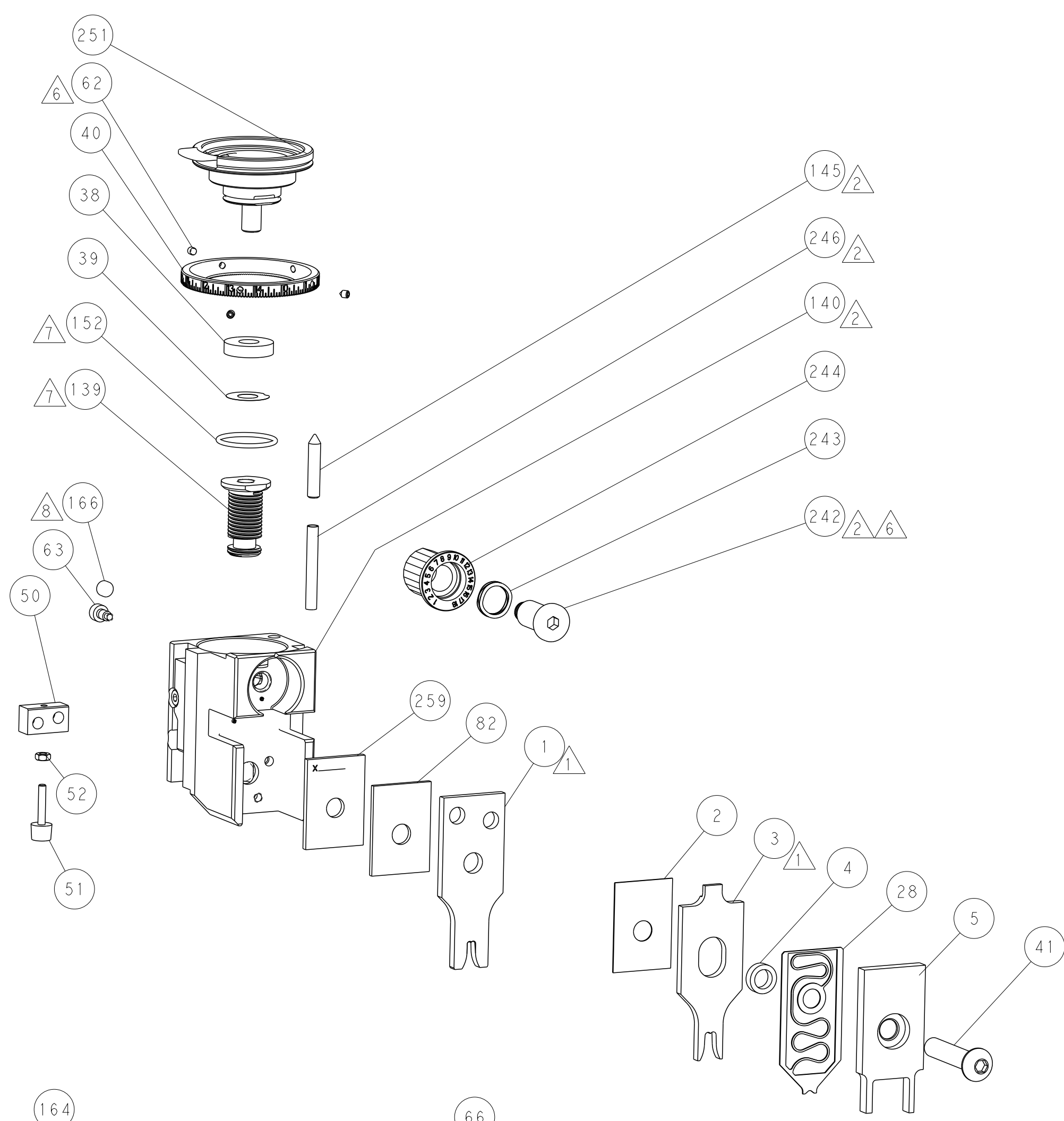
### SERVO LATCH PLATE



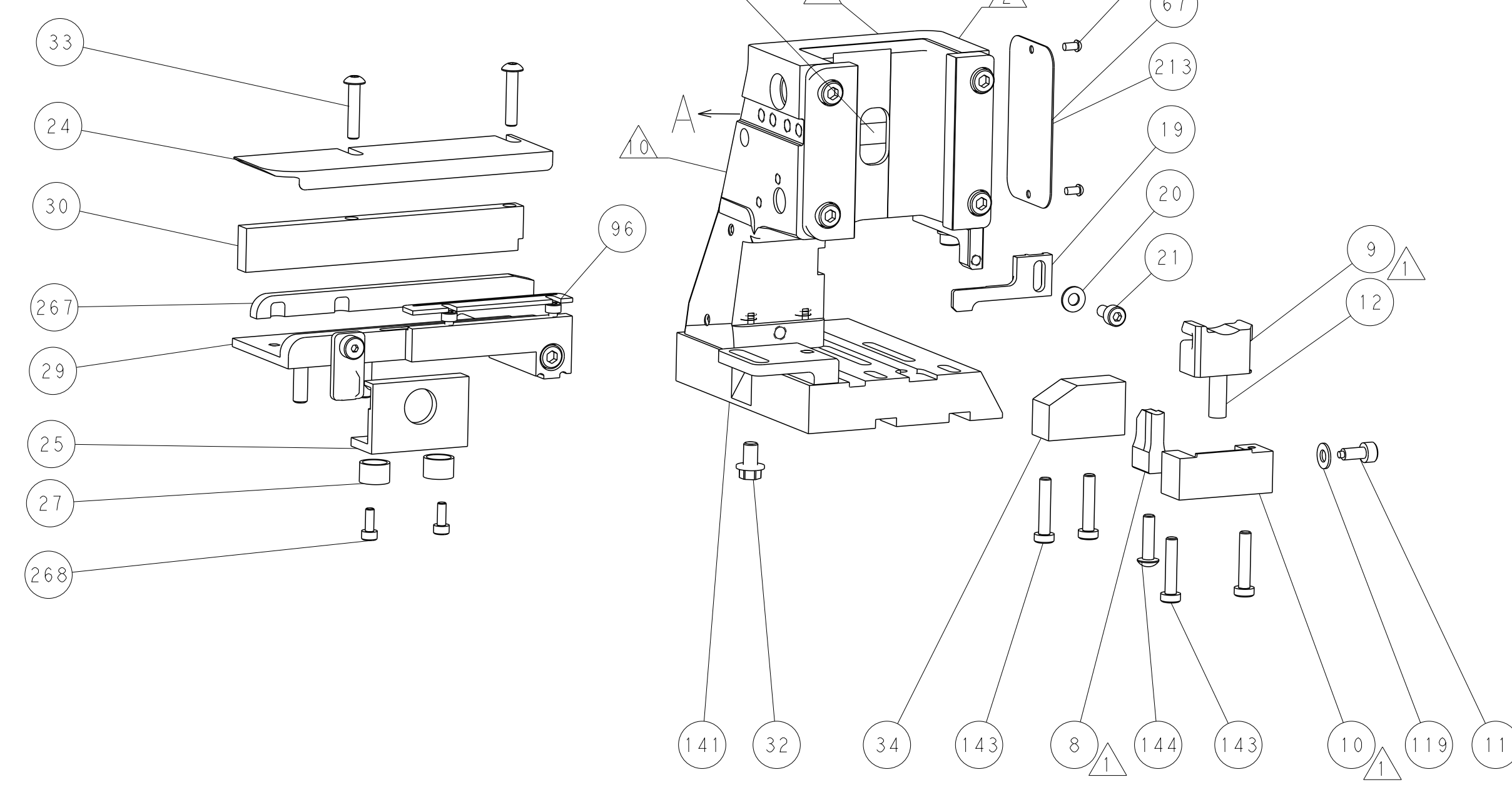
### CAM POSITION



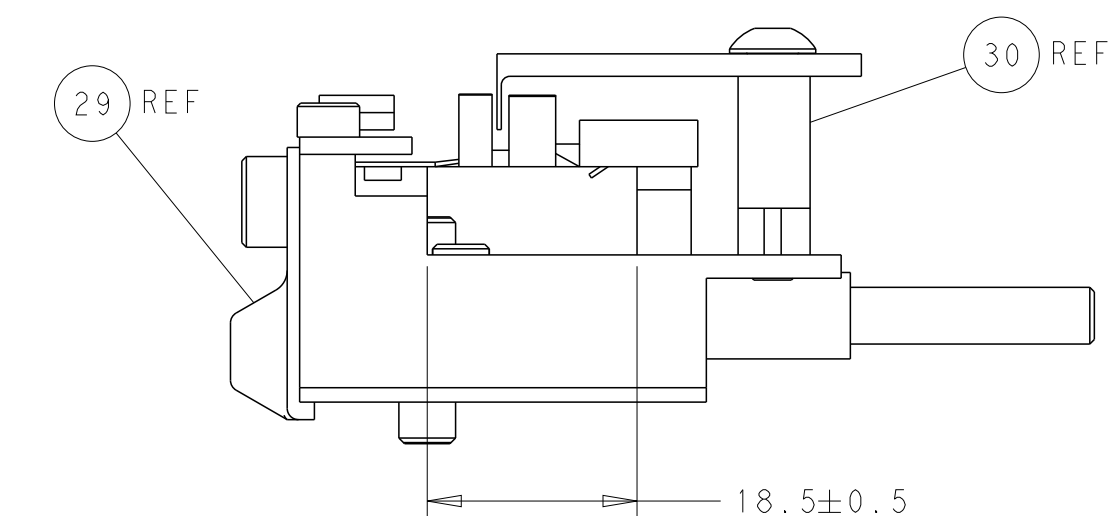
AIR FEED



TERMINAL SUPPORT LOCATION



ITEM 30 LOCATED AT  
FRONT HOLES



FEED TRACK POSITION  
GUIDE BY INSULATION BARREL

**PACIFIC VERSION**  
 Shown on sheets 3 of 4 & 4 of 4  
 (Atlantic version shown on sheets 1 of 4 & 2 of 4)

<small>THIS DRAWING IS UNPUBLISHED. RELEASED FOR PUBLICATION. ALL RIGHTS RESERVED. © 2015 BY TYCO ELECTRONICS CORPORATION. THIS DRAWING IS THE PROPERTY OF TYCO ELECTRONICS CORPORATION AND IS NOT TO BE REPRODUCED OR TRANSMITTED IN ANY FORM OR BY ANY MEANS, ELECTRONIC OR MECHANICAL, INCLUDING PHOTOCOPYING, RECORDING, OR BY ANY INFORMATION STORAGE AND RETRIEVAL SYSTEM, WITHOUT THE WRITTEN PERMISSION OF TYCO ELECTRONICS CORPORATION.</small>		DWN Y. YIN 27FEB2015 CHK G. BAILEY 27FEB2015 APVD H. GUO 27FEB2015	NAME Ocean Side Feed Applicator
DIMENSIONS: mm 0 PLC ±0.5 1 PLC ±0.5 2 PLC ±0.13 3 PLC ±0.013 4 PLC ±0.001 ANGLES ±0.001 FINISH	TOLERANCES UNLESS OTHERWISE SPECIFIED: ±0.5 ±0.13 ±0.013 ±0.001	SIZE A1 CAGE CODE 00779 DRAWING NO C=2151410	RESTRICTED TO Customer Accessible Production Drawing SCALE 1:2 SHEET 4 OF 4 REV C