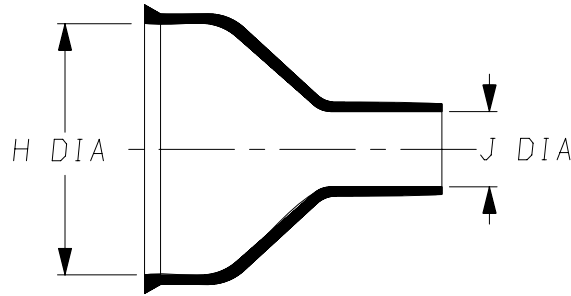
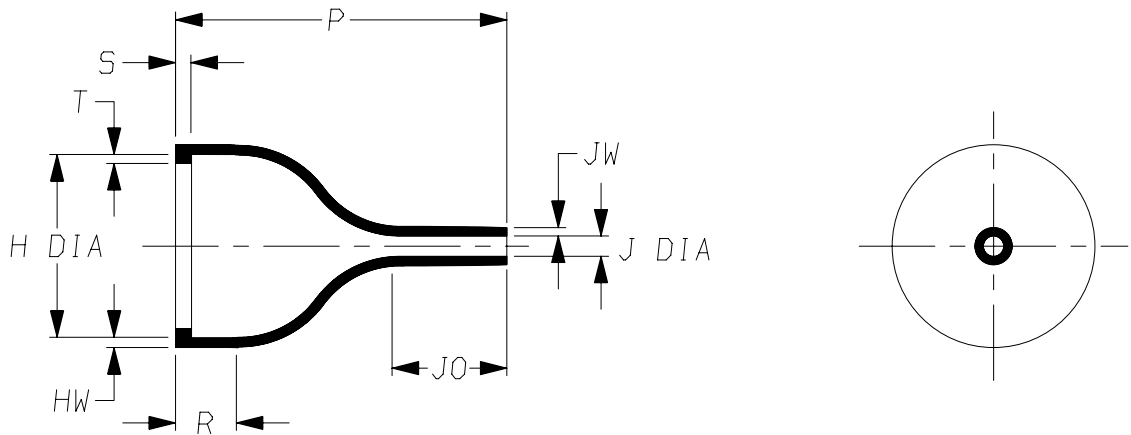


a) Part as supplied

202D963-\*G03



b) Part after unrestricted recovery



DIMENSIONS in millimetres  
(in inches, for reference)

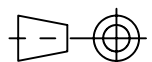
| Part No.     | H            |                | J            |               | P            | R            | S             | T             | JO           | HW            | JW            |
|--------------|--------------|----------------|--------------|---------------|--------------|--------------|---------------|---------------|--------------|---------------|---------------|
|              | Min          | Max            | Min          | Max           | ±10%         | ±10%         | ±10%          | ±10%          | REF          | ±20%          | ±20%          |
|              | a            | b              | a            | b             | b            | b            | b             | b             | b            | b             | b             |
| 202D963-*G03 | 44<br>{1.73} | 34.1<br>{1.34} | 11<br>{0.43} | 3.6<br>{0.14} | 62<br>{2.44} | 12<br>{0.47} | 3.0<br>{0.12} | 1.7<br>{0.07} | 20<br>{0.79} | 1.8<br>{0.07} | 1.1<br>{0.04} |
|              |              |                |              |               | #            |              |               |               | #            |               |               |

This is a trimmed variant  
Modified dimensions are shown thus: - #

Copyright (!)

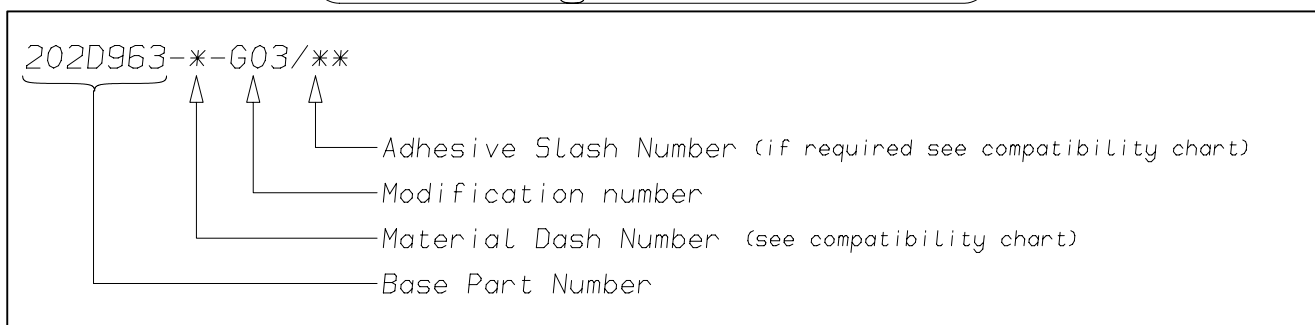
The copyright in this drawing is the property of Tyco Electronics UK Ltd. The drawing is issued on the condition that it is not copied, reproduced or disclosed to a third party, either in whole or in part without the prior written consent of Tyco Electronics UK Ltd.

Drawn A.LILLEY. Checked Issue 2 Date December 2006 Conforms to ISO Recommendations  
3rd Angle Projection  
Not to Scale



|                |               |  |                                     |
|----------------|---------------|--|-------------------------------------|
| <b>Raychem</b> |               | <b>Specification<br/>Control Drawing</b> | Part Number<br>202D963-*G03 Issue 2 |
| Iss.           | Date          | E.C.R. No.                               | Details of Change                   |
| 2              | November 2006 | CR06-HM-012                              | Imperial dimensions added           |

### (Ordering Information)



### (COMPATIBILITY CHART)

| Material Dash Number | Material Description            | SPEC Number      | Coating Slash Number |
|----------------------|---------------------------------|------------------|----------------------|
| -3                   | POLYOLEFIN, SEMI-RIGID          | RT-301, RK-6703  | /42, /86, /180       |
| -4                   | POLYOLEFIN, FLEXIBLE            | RT-1304 RT-1050  | /42, /86, /180       |
| -6                   | SILICON                         | RT-602, RK-6706  | N/A                  |
| -25                  | ELASTOMER, FLUID RESISTANT      | RT-1325, RK-6713 | /42, /86, /225       |
| -130                 | POLYOLEFIN, COMMERCIAL FLEXIBLE | RW-2008          | /42                  |
|                      |                                 |                  |                      |
|                      |                                 |                  |                      |

#### NOTES

- ① As supplied dimensions are for uncoated parts, when coating is added entry diameters will reduce by 1.5mm Max.

|  |   |
|--|---|
| Tyco Electronics UK Ltd.<br>Faraday Road,<br>Swindon, Wiltshire, SN3 5HH<br>England<br>Telephone: (01793) 528171 Fax: 572516 | Tyco Electronics Corporation<br>300, Constitution Drive,<br>Menlo Park, CA 94025<br>USA<br>Telephone (650) 361-3860 Fax: (650) 361-5579 |
| Cage Code K1010  | Cage Code 06090   |