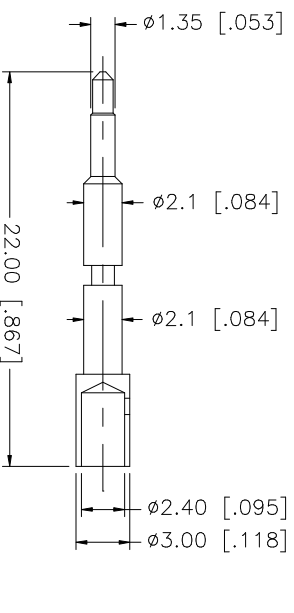
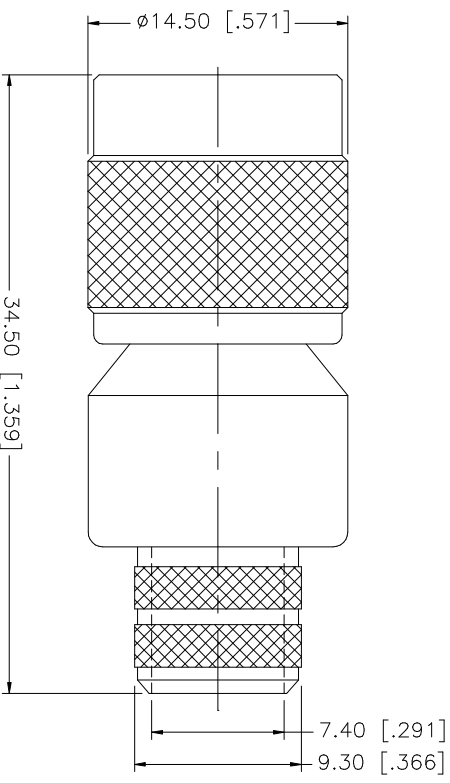
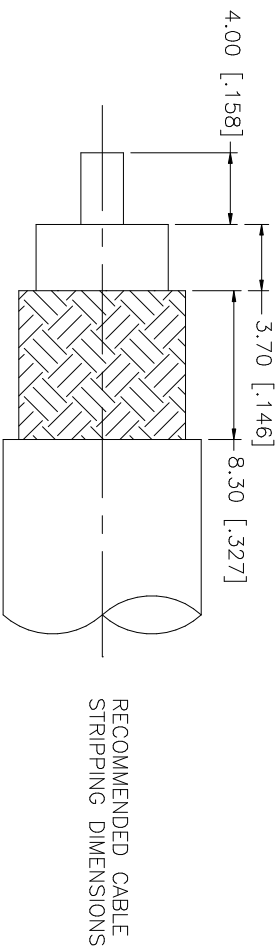
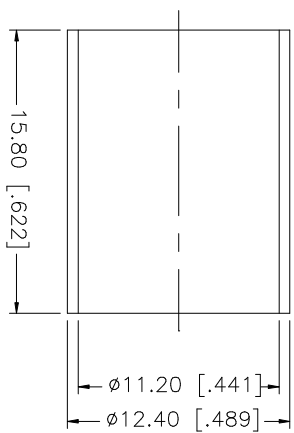


REV.	DATE	DESCRIPTION
NC	08/28/98	INITIAL RELEASE
A	07/20/05	UPDATE DRAWING FORMAT



- CRIMP NOTES:
1. CRIMPED FERRULE HEX CRIMP SIZE .429"
  2. CRIMPED CONTACT PIN HEX CRIMP SIZE .100"



UNLESS OTHERWISE SPECIFIED DIMENSIONS ARE IN INCHES AND FOR CUSTOMER REFERENCE ONLY. TOLERANCES FOR MILLIMETERS ARE:

0.5 - 8mm ± 0.20mm  
 8 - 30mm ± 0.40mm  
 30 - 120mm ± 0.50mm

UNLESS OTHERWISE SPECIFIED TOLERANCES FOR INCHES ARE:

.020 - .315 = ± 0.007"  
 .315 - 1.180 = ± 0.015"  
 1.180 - 4.724 = ± 0.020"

NO.	DESCRIPTION	MATERIAL	FINISH	QTY
8				
7				
6				
5				
4	FERRULE	BRASS	NICKEL	1
3	CONTACT PIN	BRASS	GOLD	1
2	INSULATOR	TEFLON	NATURAL	1
1	BODY	BRASS	NICKEL	1
	DESCRIPTION	MATERIAL	FINISH	QTY

APPROVALS	DATE
DRAWN G.R.S.	07/20/05
CHECKED	
ISSUED	
SHEET 1 OF 1	

CAD FILE	C:/122/122398.DWG
DWG. NO.	122398.DWG
REV.	A
SIZE	A
SCALE	NA

PART DESCRIPTION	
TNC CRIMP PLUG	
(FOR 214/U CABLE)	
PART NO.	122398

**Amphenol Connex**