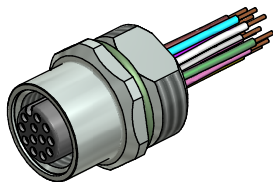


**Contact assignment:**

- |           |               |
|-----------|---------------|
| 1) brown  | 7) black      |
| 2) blue   | 8) grey       |
| 3) white  | 9) red        |
| 4) green  | 10) violet    |
| 5) pink   | 11) grey-pink |
| 6) yellow | 12) red-blue  |

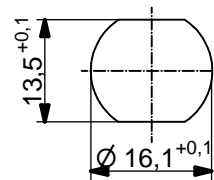


**Technical specification :**

Rated voltage: IEC 61076-2-101	30 V
Current rating: IEC 61076-2-101	1,5 A at 40°C
Insulation resistance: IEC 60512	>=100 MΩ
Pollution degree: IEC 60664-1	3/2
Degree of protection: IEC 60529	IP 67, in mated condition
Temperature range:	-30°C ... +80°C
Mating cycles: IEC 60512-9a	>=100
<b>Materials:</b>	
Contact:	CuZn
Contact plating:	Nickel, gold plated
Contact carrier:	PBT GF, UL 94
Sealing:	FPM
Socket housing:	CuZn, nickel plated
Grouting:	Polyurethane-resin, UL 94

**Installation specification:**

recommended torque:	1-1,2 Nm
Conec installation tool:	Torque wrench: 36-000200 Insert across flats 17: 36-000230



Minimum wall thickness 1,5mm,  
alternativ panel cut-out d=16,1

Part no.:	Description:	Pos	Length L:	Wire:
43-01331	SAL - 12 - FK12 - 0,5	12	0,5m	AWG 26 PVC, UL
43-xxxxx	SAL - 12 - FK12 - ...	12	x	

DO NOT ALTER CAD DRAWING BY HAND Directive 2002/95/EC RoHS compliant	Index: c 15.02.13 MG Ä4631 Data sheet revised, technical specification changed, materials corrected		<b>title:</b> <b>Female socket M12x1 with wire, frontmounting</b>		
					date
	tolerance of wire: L ≤ 4m: L + 40mm L > 4m: L + 1%	drawn	16.10.08	Fromm	
	general tolerance: 0 ± 0,50mm 0,0 ± 0,25mm 0,00 ± 0,10mm	appd.	16.10.08	Mankopf	
		<b>dwg no:</b> <b>43K1A771</b>			
<small>THIS DRAWING MAY NOT BE COPIED OR REPRODUCED IN ANY WAY, AND MAY NOT BE PASSED ON TO A THIRD PARTY WITHOUT WRITTEN PERMISSION. OWNERSHIP AND COPYRIGHT OF CONEC GmbH</small>		<b>part no:</b> <b>see table</b>			