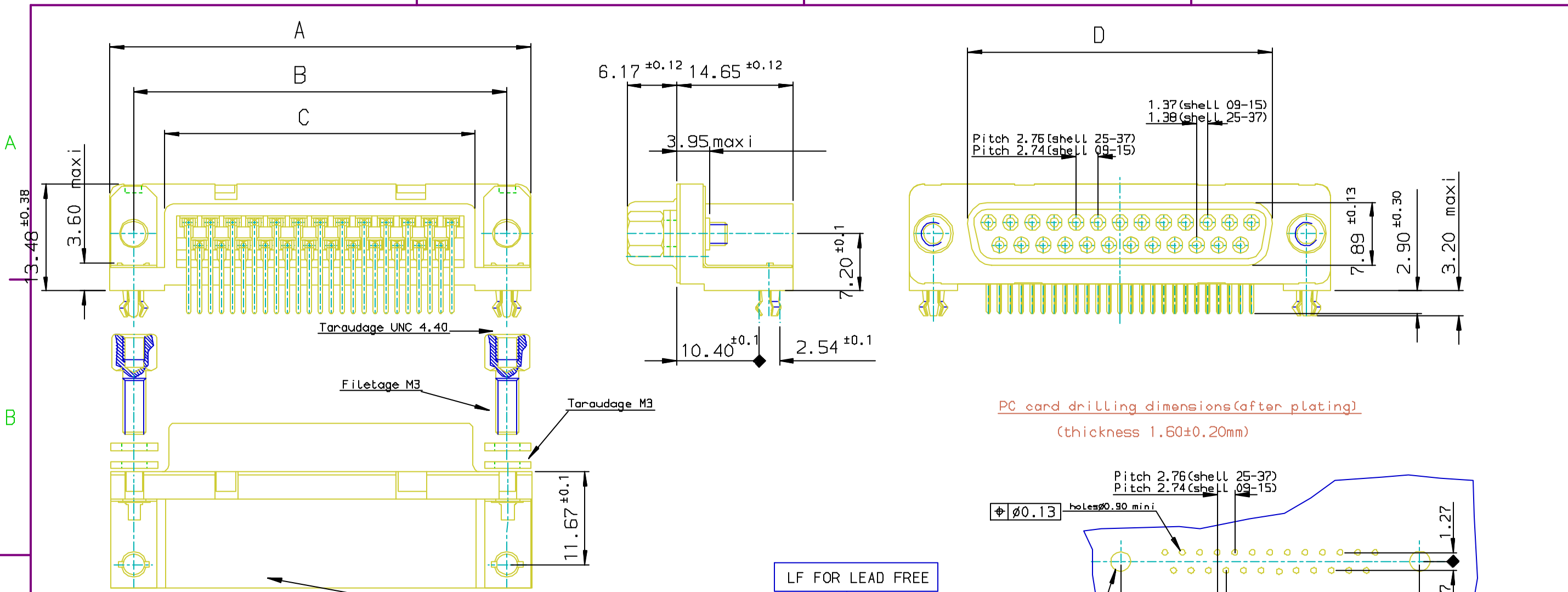


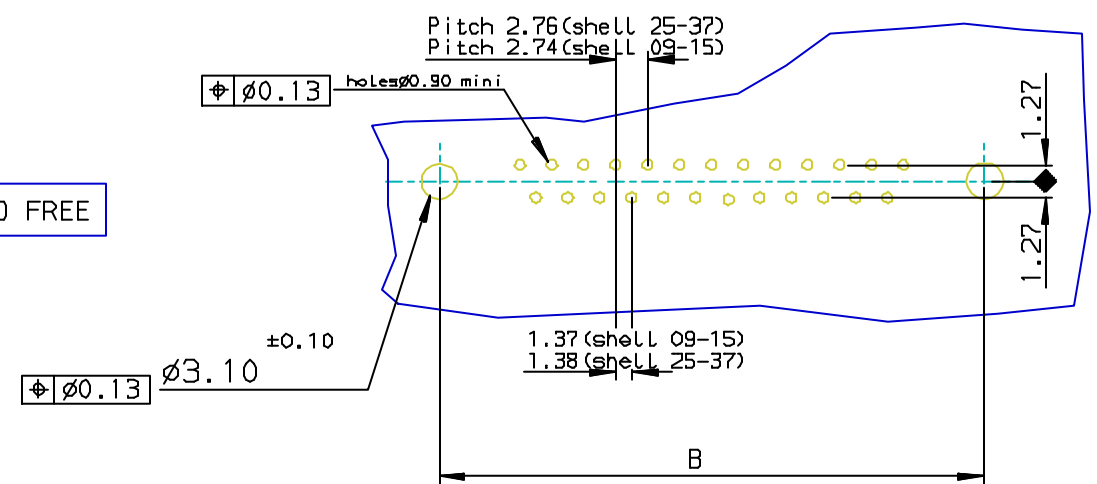


Copyright FCI.

A
B
C
D



PC card drilling dimensions (after plating)
(thickness 1.60±0.20mm)



Part Number & Date Code Printing

SHELL	A±0.38	B±0.12	C±0.10	D±0.25	PART NUMBER
09	30.81	24.99	16.96	16.21	D09S13A6GV4B**
15	39.14	33.32	25.18	24.54	D15S13A6GV4B**
25	53.03	47.04	39.12	38.25	D25S13A6GV4B**
37	69.32	63.50	55.68	54.71	D37S13A6GV4B**

REQUIREMENTS

Technical characteristics:
 Shell: steel tin/Zinc Cr3 plated
 Insulators: self-extinguishing thermoplastic, UL class 94V0
 Contacts size 20, brass, gold 0.76µ on mating end, bright tin on termination end over nickel on entire contact
 Cycles < 500
 Harpoons: phosphor bronze, tin plated
 Metal plate for electrical continuity: brass, tin/Zinc Cr3 plated
 Nuts and screwlock, brass, tin/Zinc Cr3 plated

Electrical characteristics:
 max. current rating: 5A
 Test voltage: 1000V
 Rated voltage: 300V
 Contact resistance: < 15mΩ
 Shell resistance: < 5mΩ
 Insulation resistance: > 5000MΩ

Climatic characteristics:
 Operating temperature range: -55°C +125°C

Dimensions:
 in accordance with MIL-C-24308

FOR ROHS DETAILS REFER DWG. NO: C018646-0000

Part number SEE TABLE European Views

www.fciconnect.com		surface ISO 1302 ✓	tolerance std ISO 406 ISO 1101	projection mm
TOLERANCES UNLESS OTHERWISE SPECIFIED				
Dr	JOHN SLEEBA	1994/09/09	ANGULAR	0.X ±0.1
Eng	GEORGE VJ	1994/09/09	LINEAR	0.XX ±0.1
Chr	GEORGE VJ	2005/07/27	0.XX* ±1*	0.XXX ±0.1
Appr	KVSD	2005/07/27	Product family	D-SUB Spec ref -
FCI		title SOCKET CONNECT.DELTA D RIGHT ANGLED WITH SCREWLOCK, HARPOON & METAL PLATE.		Rev. D
catalog no		DELTA-D		dwg no C01-8646-0307
		CUSTOMER		sheet 1 of 1

rev	ecn no	dr	date
C	105-0124	JS	2005/07/27
D	106-0074	SK	2006/06/08
-	-	-	-
-	-	-	-
-	-	-	-
-	-	-	-

REV F - 2006-04-17