

## Bolt-type screw terminals WF 8/2BZ

**Weidmüller Interface GmbH & Co. KG**  
 Klingenbergstraße 16  
 D-32758 Detmold  
 Germany  
 Fon: +49 5231 14-0  
 Fax: +49 5231 14-292083  
 www.weidmueller.com



The comprehensive range of bolt-type screw terminals offers secure connections for all power transmission applications.

Connections from 10 mm<sup>2</sup> to 300 mm<sup>2</sup> are possible. The conductors are attached to the terminals using crimped cable lugs and each connection secured by tightening the hexagonal nut.

Bolt-type screw terminals with threads from M5 to M16 can be used depending on the conductor cross-section. A low voltage drop and the use of a self-extinguishing material with a V-0 (UL 94) flammability rating guarantee maximum safety.

All bolt-type screw terminals have been tested according to international railway standards (EN 50343, EN 50155, NF F61-017, NF16-101; Ria 20) and comply with the requirements of those standards.

### General ordering data

Order No.	<a href="#">1789780000</a>
Type	WF 8/2BZ
Version	Bolt-type screw terminals, Feed-through terminal, Rated cross-section: 50 mm <sup>2</sup> , Threaded stud connection
GTIN (EAN)	4032248251148
Qty.	25 pc(s).

**Bolt-type screw terminals**  
**WF 8/2BZ**

**Weidmüller Interface GmbH & Co. KG**  
 Klingenbergstraße 16  
 D-32758 Detmold  
 Germany  
 Fon: +49 5231 14-0  
 Fax: +49 5231 14-292083  
 www.weidmueller.com

**Technical data****Dimensions and weights**

Length	67 mm	Width	22.8 mm
Height	63.5 mm	Height of lowest version	65 mm
Net weight	121.554 g		

**Temperatures**

Operating temperature		Storage temperature	
Continuous operating temp., min.	-50 °C	Continuous operating temp., max.	120 °C

**Additional technical data**

Explosion-tested version	No	Open sides	Open
Type of mounting	Snap-on		

**Clampable wires (rated connection)**

Type of connection	Threaded stud connection	Clamping range, rated connection, min.	2.5 mm <sup>2</sup>
Clamping range, rated connection, max.	50 mm <sup>2</sup>	Tightening torque, min.	6 Nm
Tightening torque, max.	12 Nm	Wire connection cross section, finely stranded, max.	50 mm <sup>2</sup>
Wire connection cross-section, finely stranded, min.	2.5 mm <sup>2</sup>		

**Rated data**

Rated cross-section	50 mm <sup>2</sup>	Rated voltage	1,000 V
Rated impulse withstand voltage	8 kV	Rated current	150 A
Current at maximum wires	150 A	Pollution severity	3

**Stud connection**

Tightening torque, min.	6 Nm	Tightening torque, max.	12 Nm
Stud size for spade connection	M 8	Cable lug to DIN 46234	2.5...50 mm <sup>2</sup>
Cable lug to DIN 46235	6...35 mm <sup>2</sup>	Clamping range, bolted connection , min.	2.5 mm <sup>2</sup>
Clamping range, bolted connection , max.	50 mm <sup>2</sup>		

**UL ratings data**

Certificate No. (cURus)	E60693VOL1SEC43	Conductor size Factory wiring max. (cURus)	0 AWG
Current size C (cURus)	150 A	Voltage size C (cURus)	1000 V
Certificate No. (UR)	E60693VOL1SEC43	Voltage size C (UR)	1000 V
Current size C (UR)	150 A	Conductor size Factory wiring max. (UR)	0 AWG
Conductor size Factory wiring min. (UR)	14 AWG	Conductor size Field wiring max. (UR)	0 AWG

**Material data**

Material	Wemid	Colour	Dark Beige
UL 94 flammability rating	V-0		

**Bolt-type screw terminals  
WF 8/2BZ**

**Weidmüller Interface GmbH & Co. KG**  
 Klingenbergstraße 16  
 D-32758 Detmold  
 Germany  
 Fon: +49 5231 14-0  
 Fax: +49 5231 14-292083  
 www.weidmueller.com

**Technical data**

**System specifications**

Product family	Bolt-type screw terminals	Type of connection	Threaded stud connection
Number of levels	1	No. of clamping points per level	2
Levels cross-connected internally	No	Mounting rail	TS 35

**Classifications**

ETIM 3.0	EC002020	UNSPSC	30-21-18-01
eClass 6.2	27-14-11-20	eClass 7.1	27-14-11-20

**Product information**

Descriptive text ordering data	1000 V UL and CSA for usage groups B and C: can be used with isolating DIN rails and when using WTW-type partitions.
Descriptive text accessories	With WTW...2300 made from epoxy resin, rated current 2300 V according to prelim. EN 50124 pt 1

**Approvals**

Approvals



ROHS Conform

**Data sheet...**

**Bolt-type screw terminals  
WF 8/2BZ**

**Weidmüller Interface GmbH & Co. KG**  
Klingenbergstraße 16  
D-32758 Detmold  
Germany  
Fon: +49 5231 14-0  
Fax: +49 5231 14-292083  
[www.weidmueller.com](http://www.weidmueller.com)

**Drawings**



**Bolt-type screw terminals  
WF 8/2BZ**

**Weidmüller Interface GmbH & Co. KG**  
 Klingenbergstraße 16  
 D-32758 Detmold  
 Germany  
 Fon: +49 5231 14-0  
 Fax: +49 5231 14-292083  
 www.weidmueller.com

**Accessories**
**WQL WF**


The comprehensive range of bolt-type screw terminals offers secure connections for all power transmission applications. Connections from 10 mm<sup>2</sup> to 300 mm<sup>2</sup> are possible. The conductors are attached to the terminals using crimped cable lugs and each connection secured by tightening the hexagonal nut. Bolt-type screw terminals with threads from M5 to M16 can be used depending on the conductor cross-section. A low voltage drop and the use of a self-extinguishing material with a V-0 (UL 94) flammability rating guarantee maximum safety. All bolt-type screw terminals have been tested according to international railway standards (EN 50343, EN 50155, NF F6 1-017, NF16-101; Ria 20) and comply with the requirements of those standards.

**General ordering data**

Order No.	Type	Version	GTIN (EAN)	Qty.
<a href="#">1781000000</a>	WQL 3 WF8	Bolt-type screw terminals, Accessories, Cross-connector, No. of poles: 3	40322482412005	5 pc(s).
<a href="#">1780990000</a>	WQL 2 WF8	Bolt-type screw terminals, Accessories, Cross-connector, No. of poles: 2	40322482194145	5 pc(s).

**WF shrouding cover**


The comprehensive range of bolt-type screw terminals offers secure connections for all power transmission applications. Connections from 10 mm<sup>2</sup> to 300 mm<sup>2</sup> are possible. The conductors are attached to the terminals using crimped cable lugs and each connection secured by tightening the hexagonal nut. Bolt-type screw terminals with threads from M5 to M16 can be used depending on the conductor cross-section. A low voltage drop and the use of a self-extinguishing material with a V-0 (UL 94) flammability rating guarantee maximum safety. All bolt-type screw terminals have been tested according to international railway standards (EN 50343, EN 50155, NF F6 1-017, NF16-101; Ria 20) and comply with the requirements of those standards.

**General ordering data**

Order No.	Type	Version	GTIN (EAN)	Qty.
<a href="#">1780940000</a>	ADP WF10/WF12	Bolt-type screw terminals, Accessories, Transparent	40322482412551	1 m

**Bolt-type screw terminals  
WF 8/2BZ**

**Weidmüller Interface GmbH & Co. KG**  
 Klingenbergstraße 16  
 D-32758 Detmold  
 Germany  
 Fon: +49 5231 14-0  
 Fax: +49 5231 14-292083  
 www.weidmueller.com

**Accessories**

[1781050000](#) HA ADP WF6/WF10

Bolt-type screw terminals, 4032248241231 10 pc(s).  
 Accessories, Dark Beige,  
 2.2 mm

**Blank**



**WS markers** are the perfect match for W series-connectors. Thanks to their system compatibility, the WS tags can also be used with the I-series and the Z-series. The large marking surfaces do not only permit long character strings but also multi-line text.  
**WS markers** are ideal for labels with long, customised character strings. Thanks to the proven MultiCard format, printing with laser printer , PrintJet ADVANCED , plotter or MC-Mobilo is possible.

- Can be fitted in strips or singly
- Markers in proven MultiCard format

**General ordering data**

Order No.	Type	Version	GTIN (EAN)	Qty.
<a href="#">1609880000</a>	WS 15/5 MC NE WS	Terminal markers, MultiCard, 15 x 5 mm, Polyamide, Colour: White	4008190203504	480 pc(s).

**Blank**



**WS markers** are the perfect match for W series-connectors. Thanks to their system compatibility, the WS tags can also be used with the I-series and the Z-series. The large marking surfaces do not only permit long character strings but also multi-line text.  
**WS markers** are ideal for labels with long, customised character strings. Thanks to the proven MultiCard format, printing with laser printer , PrintJet ADVANCED , plotter or MC-Mobilo is possible.

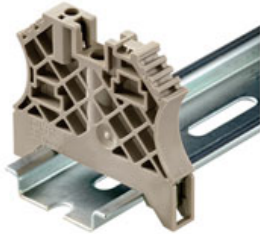
- Can be fitted in strips or singly
- Markers in proven MultiCard format

**General ordering data**

Order No.	Type	Version	GTIN (EAN)	Qty.
<a href="#">1635000000</a>	WS 10/5 MC NE WS	Terminal markers, MultiCard, 10 x 5 mm, Polyamide 66, Colour: White	4008190261948	720 pc(s).

**Bolt-type screw terminals  
WF 8/2BZ**

**Weidmüller Interface GmbH & Co. KG**  
 Klingenbergstraße 16  
 D-32758 Detmold  
 Germany  
 Fon: +49 5231 14-0  
 Fax: +49 5231 14-292083  
 www.weidmueller.com

**Accessories**
**for TS 35 terminal rail**


Weidmüller's range of products includes end brackets that guarantee a permanent, reliable mounting on the terminal rail and prevent sliding. Versions with and without screws are available. The end brackets include marking options, also for group markers, and also a test plug holder.

**General ordering data**

Order No.	Type	Version	GTIN (EAN)	Qty.
<a href="#">106120000</a>	WEW 35/2	Accessories, End bracket	4008190030230	100 pc(s).

**WTW WF**


The comprehensive range of bolt-type screw terminals offers secure connections for all power transmission applications. Connections from 10 mm<sup>2</sup> to 300 mm<sup>2</sup> are possible. The conductors are attached to the terminals using crimped cable lugs and each connection secured by tightening the hexagonal nut. Bolt-type screw terminals with threads from M5 to M16 can be used depending on the conductor cross-section. A low voltage drop and the use of a self-extinguishing material with a V-0 (UL 94) flammability rating guarantee maximum safety. All bolt-type screw terminals have been tested according to international railway standards (EN 50343, EN 50155, NF F6 1-017, NF16-101; Ria 20) and comply with the requirements of those standards.

**General ordering data**

Order No.	Type	Version	GTIN (EAN)	Qty.
<a href="#">1780910000</a>	WTW WF8 2300	Bolt-type screw terminals, Accessories, Partition plate, Grey, 3 mm	4032248241132	20 pc(s).
<a href="#">1780890000</a>	WTW WF10/WF12	Bolt-type screw terminals, Accessories, Partition plate, Dark Beige, 3 mm	4032248219391	20 pc(s).