

THIS DRAWING IS UNPUBLISHED.		RELEASED FOR PUBLICATION		2007	
COPYRIGHT 2007		TE CONNECTIVITY		ALL RIGHTS RESERVED.	
PART NUMBER	REV	FIRST USED	POWER UNIT	FEED TYPE	
680881-1	J	354500-1	BENCH MODEL G	AIR FEED	
680881-2	J	852070-1	BENCH MODEL K	AIR FEED	


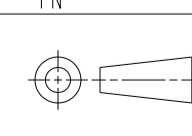
- 1 RECOMMENDED SPARE PARTS.
- 2 GREASE LIGHTLY.
- 3 LUBRICATE DAILY USING NO.20 MACHINE OIL.
- 4 CHANGE TERMINAL POSITIONER AS REQUIRED TO KEEP TERMINAL ON CENTER OF ANVIL. FASTEN EXTRA TERMINAL POSITIONER TO APPLICATOR.
- 5 AFTER ASSEMBLY OF APPLICATOR, PROPER SPRING PRESSURE (ITEM 34) CAN BE OBTAINED BY TIGHTENING SET SCREW (ITEM 105) UNTIL CONTACT IS MADE WITH SPACER (ITEM 32) THEN TIGHTEN AN ADDITIONAL 5 1/2 - 6 REVOLUTIONS.)
- 6 GUARD MUST BE IN PLACE WHEN OPERATING APPLICATOR IN A BENCH G MACHINE.
- 7 ITEMS 66 & 67 MOUNT TO REEL SUPPORT SHAFT TO SUPPORT TERMINAL REEL.
- 8 APPLY SEALANT I-23419-5 AT ASSY.
- 9 ITEM NOT SHOWN.

TERMINAL NAME: BRUSH CONTACT, TAB-LOCK					
-	62009	AMP TERMINAL - AMP CRIMP SPECS			
-	1217217				
-	1742492-1	PAD LTR	CRIMP HEIGHT	WIRE SIZE	
-	-	A	.062±.002	14	
-	-	B	.056±.002	16	
-	-	C	.052±.002	18	
-	-	D	.048±.002	20	
-	-	CRIMP	SIZE	TYPE	RANGE
-	-	WIRE	.140	TAB LOC	20-14
-	-	INSUL	-	-	-
WIRE STRIP LENGTH	TERM APPL SPEC	FEED	APPL INSTRUCTIONS	SET UP GAGE	LAYOUT
.187-.217	114-2018	.480	A1-8037	-	-

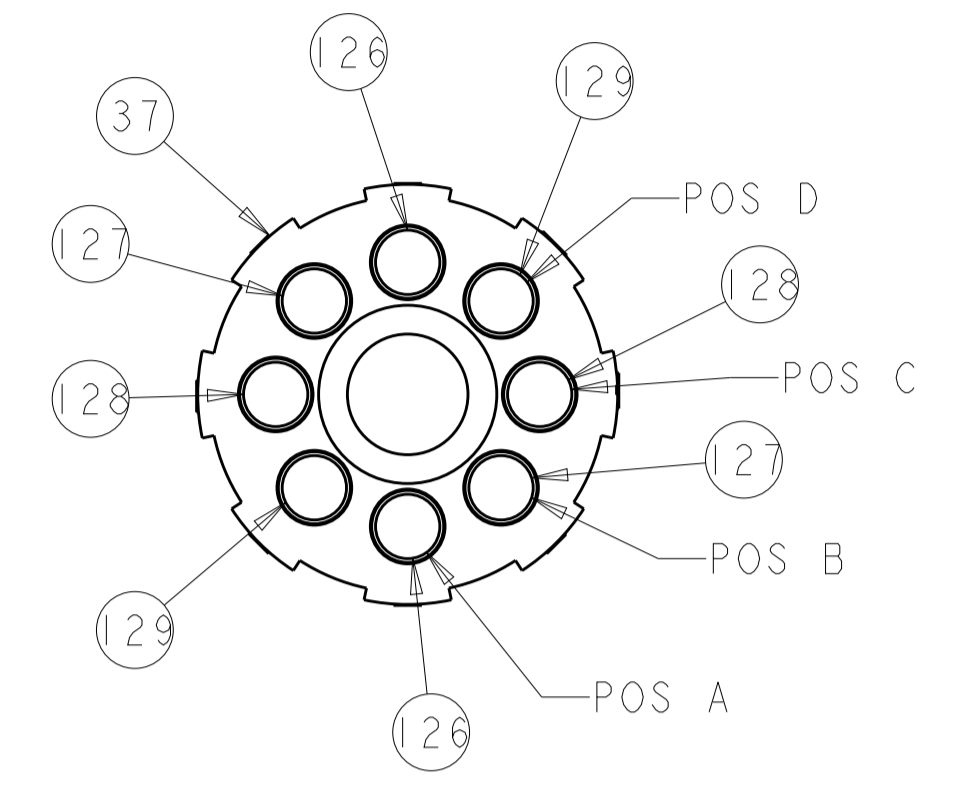
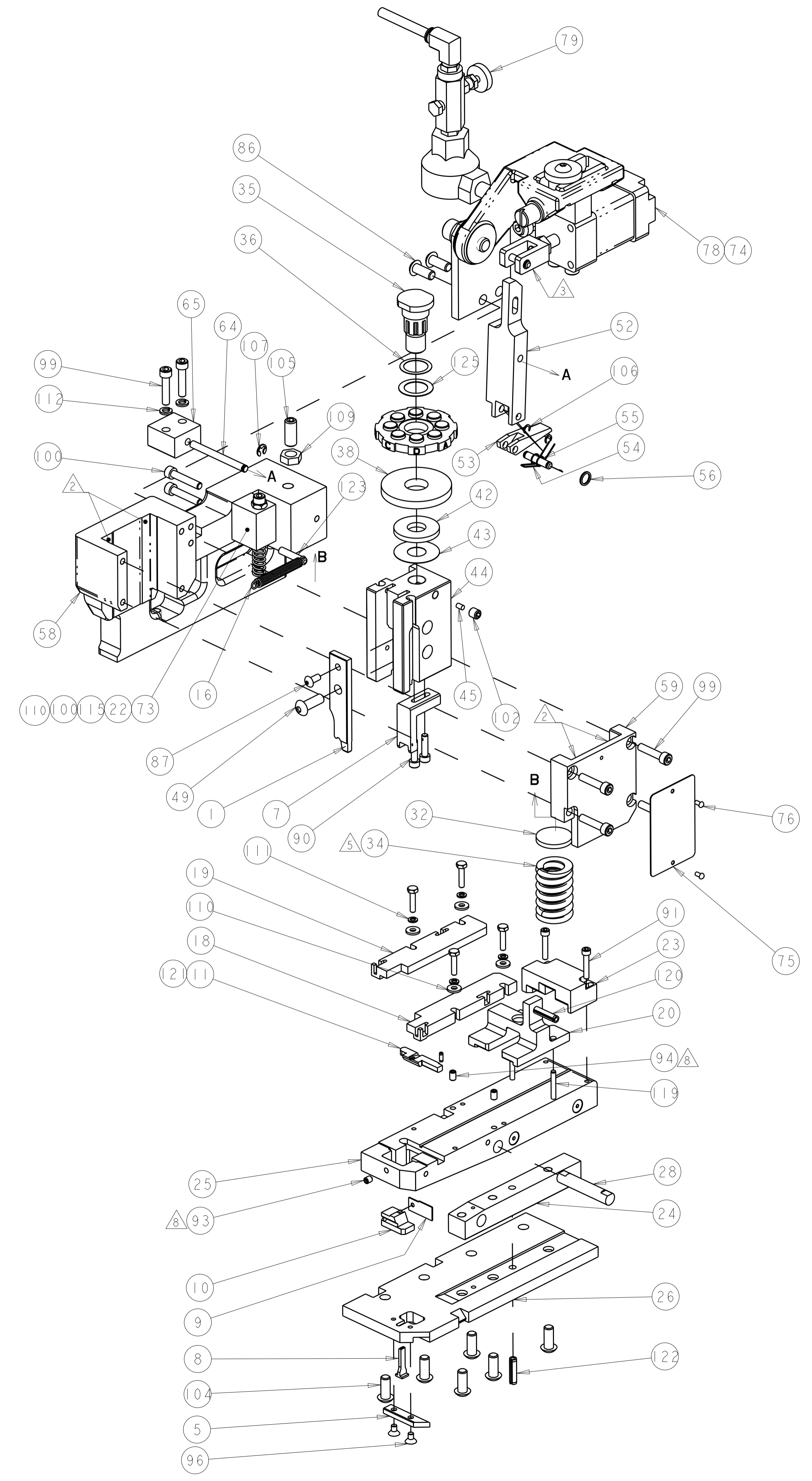
LOC	DIST	REVISIONS			
A	66	REV	DATE	BY	APPV
		H1	07APR2010	MY	GB
		J	28AUG2012	MY	GB

1	1	-	21009-2	SCR, SET, SELF LOCKING 1/4-20 X .250	102
3	3	-	3-21000-9	SCR, SKT HD CAP 10-32 X 1.000	100
6	6	-	3-21000-8	SCR, SKT HD CAP 10-32 X .875	99
2	2	-	2-24607-7	SCR, FLT, (6-32x.25)	96
2	2	-	4-21006-0	SCR, SET, CUP POINT 8-32 X .250	94
1	1	-	21061-9	SCR, SET, CONE POINT 8-32 X .250	93
2	2	-	2-21000-2	SCR, SKT HD CAP 6-32 X .750	91
2	2	-	1-23030-1	SCR, SKT HD CAP, S-LOCK, 8-32 X .625	90
4	4	-	1-22603-8	SCREW, MACH, HEX HD, 6-32 X .625	89
1	1	-	2-21002-1	SCR, BTN SKT HD CAP 8-32 X .375	87
2	2	-	3-21002-4	SCR, BTN SKT HD CAP 1/4-20 X .625	86
-	1	-	679532-1	INSERT, GUARD	82
1	-	-	692655-8	AIR FEED VALVE ASSEMBLY	79
1	-	-	457098-3	AIR FEED ASSEMBLY	78
1	-	-	694427-1	PLATE, APPLICATOR, MOUNTING	77
2	2	-	21017-2	SCREW, DRIVE	76
1	1	-	461264-1	PLATE, IDENTIFICATION	75
-	1	-	462622-3	AIR FEED ASSEMBLY	74
1	1	-	458969-1	SPRING RETAINER, DRAG	73
1	1	-	21001-6	SCR, SHC (1/4-20x1.00)	67
1	1	-	682131-1	WASHER, BEVELED	66
1	1	-	456987-1	BLOCK, PIVOT	65
1	1	-	457058-1	PIN, PIVOT	64
1	1	-	455164-1	CAP, RAM	59
1	1	-	461853-1	HOUSING, MODIFIED	58
1	1	-	25745-1	RING, SPLIT	56
1	1	-	240624-1	PIN, FEED FINGER	55
1	1	-	691499-1	SPRING-FEED FINGER	54
1	1	-	690584-6	FINGER, FEED	53
1	1	-	457057-1	PIVOT ARM	52
1	1	-	3-21002-5	SCR, BTN SKT HD CAP 1/4-20 X .750	49
1	1	-	690191-1	PLUG, NYLON	45
1	1	-	691533-1	RAM, SPECIAL	44
1	1	-	690125-1	SHIM SUB-ASSY	43
1	1	-	690124-4	WASHER, RAM (.135)	42
1	1	-	690223-2	SPACER, INS.	38
1	1	-	354777-1	WIRE DISC, ASSEMBLY	37
1	1	-	22480-5	WASHER, WAVE SPRING	36
1	1	-	690212-1	POST, RAM	35
1	1	-	3-23846-5	SPRING, DIE	34
1	1	-	690573-1	SPACER, SPRING	32
1	1	-	690582-1	PIN, HINGE	28
1	1	-	455946-1	PLATE, BASE	26
1	1	-	462033-1	HINGE BAR	25
1	1	-	690571-1	STABILIZER	24
1	1	-	460469-1	BLOCK, SPRING PRESS	23
1	1	-	7-22282-5	SPRING, COMPRESSION	22
1	1	-	458960-3	DRAG	20
1	1	-	462031-1	GUIDE, REAR STRIP	19
1	1	-	462032-1	GUIDE, FRONT STRIP	18
1	1	-	2-22287-4	SPRING, EXTENSION	16
1	1	-	691525-6	PLATE, REAR SHEAR	11
1	1	-	455838-2	ANVIL INSERT	10
1	1	-	690569-5	PLATE, SHEAR, FRONT	9
1	1	-	455945-1	ANVIL, REVERSIBLE	8
1	1	-	691532-6	SHEAR BLADE MINI APPLICATOR	7
1	1	-	691522-1	PLATE, ANVIL RETAINING	5
1	1	-	691531-2	WIRE CRIMPER, REVERSIBLE PREMIUM	1
-2	-1	U/M	PART NO	DESCRIPTION	ITEM NO

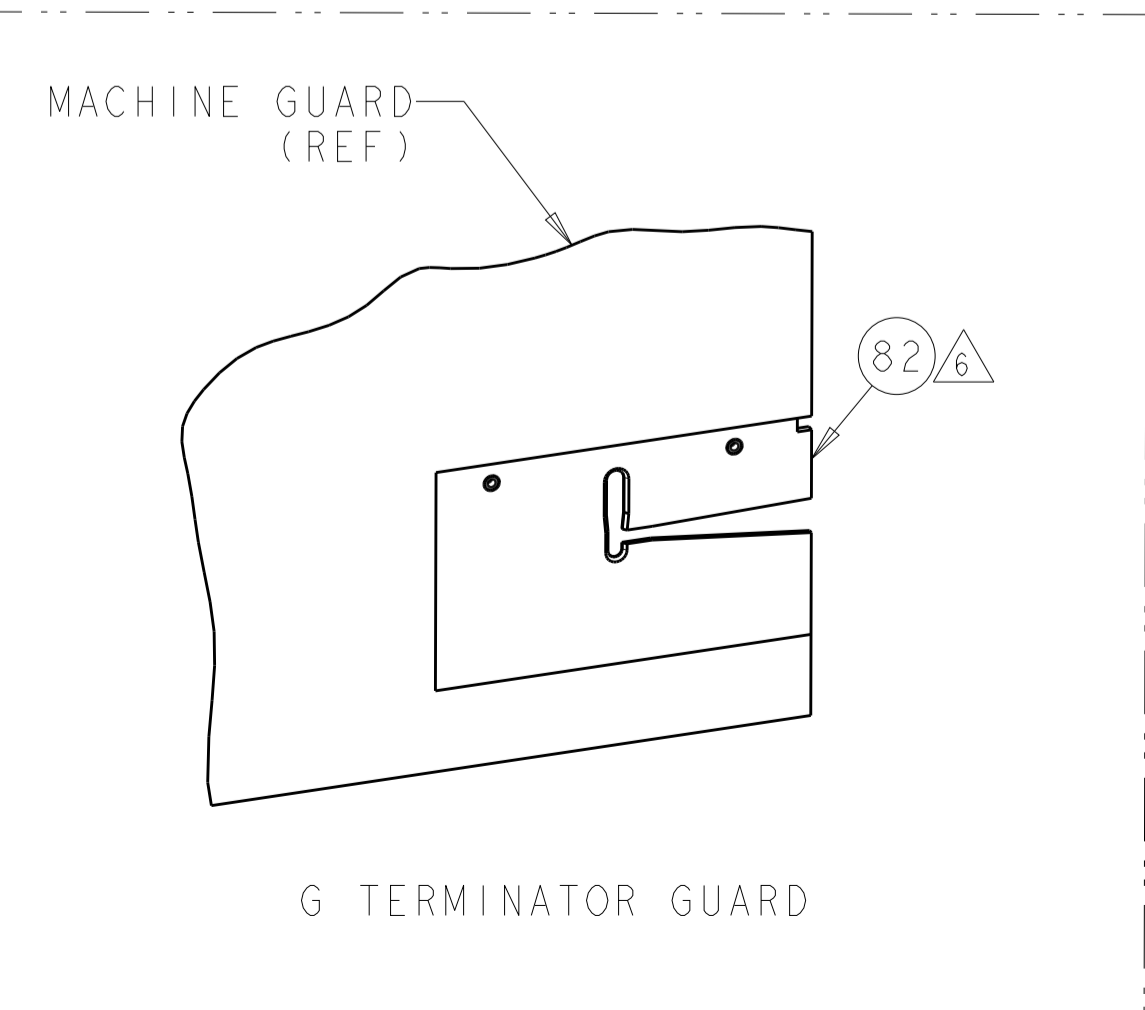
2	2	-	5-354779-7	PIN, WIRE DISC (.3275)	129
2	2	-	5-354779-0	PIN, WIRE DISC (.3240)	128
2	2	-	4-354779-5	PIN, WIRE DISC (.3215)	127
2	2	-	3-354779-1	PIN, WIRE DISC (.3145)	126
1	1	-	986950-1	WASHER, FLAT PRECISION	125
1	1	-	3-22183-7	PIN, GROOVED, TYPE 67	123
1	1	-	21029-5	PIN, SLOTTED SPRING .188 X .750	122
1	1	-	3-21028-2	PIN, SLOTTED SPRING .094 X .250	121
1	1	-	21029-9	PIN, SLOTTED SPRING .188 X 1.000	120
2	2	-	21030-7	PIN, DOWEL .1250 X 1.250	119
1	1	-	21018-7	NUT, HEX, REG 10-32	115
2	2	-	21024-5	WASHER, SPRG LOCK, REG NO 10	112
4	4	-	21024-3	WASHER, SPRG LOCK, REG NO 6	111
5	5	-	21899-1	WASHER, FLAT	110
1	1	-	1-22202-7	NUT, HEX, JAM 5/16-24/UNF	109
1	1	-	1-21986-2	RING, RETAIN, EXTERN, 3/16 E-RING	107
2	2	-	21045-3	RING, RETAIN, EXTERN, 3/16 CRESCENT	106
1	1	-	8-21007-5	SCR, SET, CUP POINT 5/16-24 X .750	105
7	7	-	2-22733-8	SCR, BHSC, SELF-LOCKING, 1/4-20 X .625	104

THIS DRAWING IS A CONTROLLED DOCUMENT. DIMENSIONING AND TOLERANCING PER ASME Y14.5M-2009.		OWN B. WEAVER 07FEB2007	 TE Connectivity
DIMENSIONS: IN		CHK T. ELBIN 07FEB2007	
TOLERANCES UNLESS OTHERWISE SPECIFIED:		APVD T. ELBIN 07FEB2007	NAME APPLICATOR, HINGE BAR, .205 FLAG FASTON, LEFT HAND
 0 PLC ±.010 1 PLC ±.005 2 PLC ±.003 3 PLC ±.002 4 PLC ±.001 ANGLES ±.005		PRODUCT SPEC	SIZE A100779C=680881
MATERIAL		APPLICATION SPEC	RESTRICTED TO
FINISH		WEIGHT	SCALE 1:1 SHEET 1 OF 2 REV J
Customer Accessible Production Drawing		Customer Accessible Production Drawing	

LOC		DIST		REVISIONS			
A	66	P	LTN	DESCRIPTION	DATE	DWN	APVD
		-		SEE SHEET 1			



SCALE 1:1



THIS DRAWING IS A CONTROLLED DOCUMENT. DIMENSIONING AND TOLERANCING PER ASME Y14.5M-2009		DWN: B. WEAVER 07FEB2007	TE Connectivity
TOLERANCES UNLESS OTHERWISE SPECIFIED:		CHK: T. ELBIN 07FEB2007	
DIMENSIONS:	IN	APVD: T. ELBIN 07FEB2007	NAME: APPLICATOR, HINGE BAR, .205 FLAG FASTON, LEFT HAND
	0 PLC ±	PRODUCT SPEC	SIZE: CAGE CODE DRAWING NO
	1 PLC ±	APPLICATION SPEC	RESTRICTED TO
	2 PLC ±		
	3 PLC ±		
	4 PLC ±		
	ANGLES ±	WEIGHT	
MATERIAL:	FINISH	SCALE: 11:20	SHEET 2 OF 2 REV J
Customer Accessible Production Drawing		A100779C=680881	