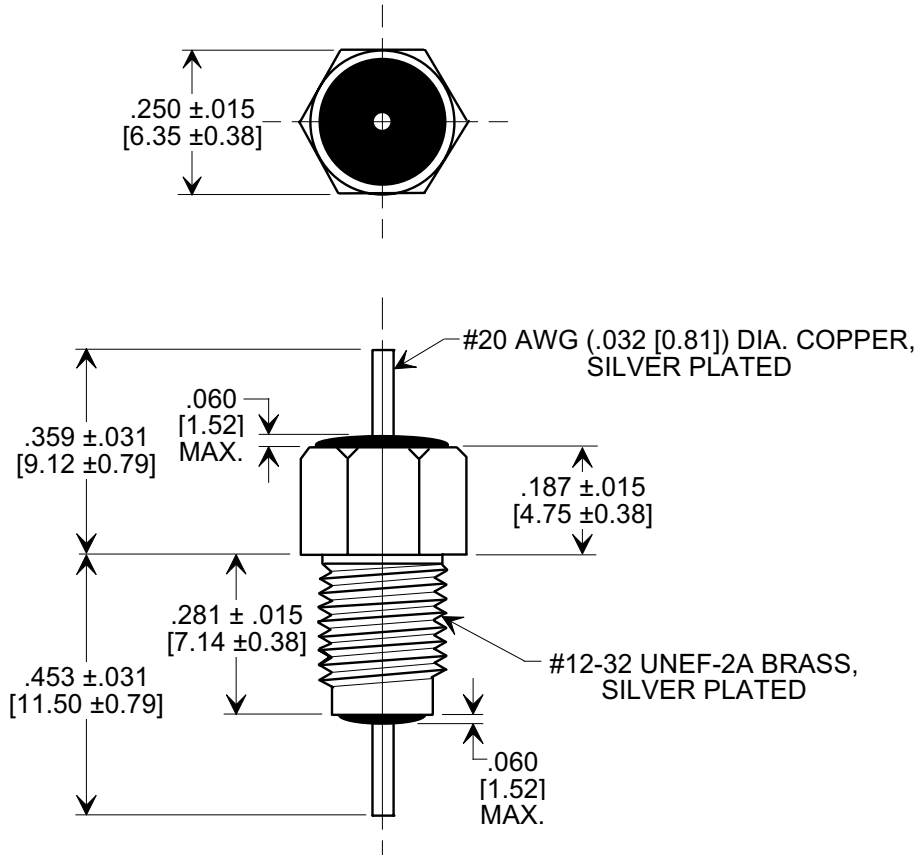
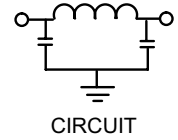
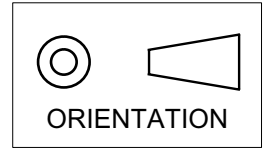


MARKETING SALES DRAWING

DIMENSIONS IN INCHES - DO NOT SCALE THIS DRAWING
DIMENSIONS IN METRIC - []

Electrical Testing
 per Tusonix standard
 test plans and Mil-Std-202
 Test Methods.



NOTES:

1. SUPPLIED WITH SILVER PLATED HEX NUT AND LOCK WASHER.
2. TUSONIX STANDARD PART NUMBER: 4202-000.
 TUSONIX RoHS COMPLIANT PART NUMBER: 4202-000 LF.
 CUSTOMER MUST SPECIFY STANDARD OR RoHS PART NUMBER WHEN ORDERING.
3. PART MARKING: TRADEMARK AND VARIATION NUMBER ON HEX FLATS.
 STANDARD PART: BLACK INK. RoHS PART: GREEN INK.

MIN. CAP. (pF)	WORKING VOLTAGE (WVdc)		CURRENT (Idc)	DWV (VDC)	I.R. MIN. @ 100 VDC	MINIMUM NO LOAD INSERTION LOSS (dB) AT 25°C PER MIL-STD -220			
	85°C	125°C				10 MHz	100 MHz	1 GHz	10 GHz
1500	350	200	10 A	700	10 G	5	45	70	70

X-2015 Rev-0	REVISION RECORD	0	Original Release C.O.
	1	WAS SK 6644-000-S. L.E. 01-13-84	
	2	DIM'S & TOL'S REV'D RELEASED. L.E. 1-8-85	
	1653	CURRENT UNIT "A" ADDED. L.E. 08-20-85	
	3	2595	
4	RDN TO COMP FMT & ADDED METRIC. S.M. 02-12-02		
5	2002013-3-08		
6-10	ADDED NOTES 2 & 3. REF TO PLATING ON LEAD & BUSHING ADDED. S.M. 05-18-05		
		--TOLERANCES-- Unless Otherwise Specified	Title BUSHING STYLE EMI FILTER
		DECIMAL ±	
		ANGLES ±	Drawn S.M. 02-12-02
		TUSONIX TUCSON, ARIZONA	Approved T.C. 02-12-02
			A
			Scale 3 X