

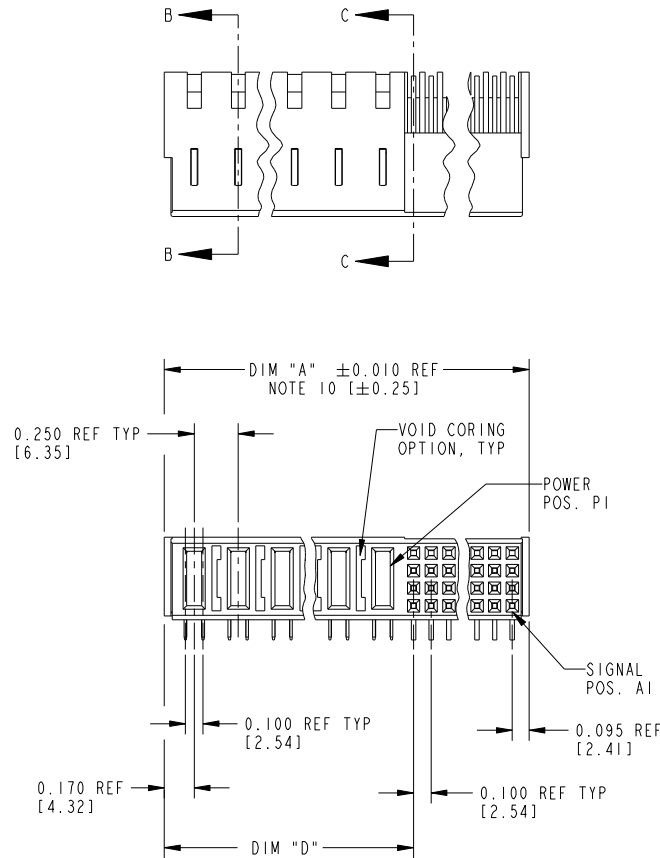
Tous droits strictement réservés. Reproduction ou communication à des tiers interdite sous quelque forme que ce soit sans autorisation écrite du propriétaire. Propriété de c.FCI. Droits de reproduction FCI.



All rights strictly reserved. Reproduction or issue to third parties in any form whatever is not permitted without written authority from the proprietor. Property of FCI. Copyright FCI.

PRODUCT NUMBER
51765-A00CCDDE0_
SEE NOTE 1

1 | 2 | 3 | 4



mat'l code				tolerances unless otherwise specified		CUSTOMER COPY	
SEE NOTE 2				.XX±.01/.X±.3		www.fciconnect.com	
ltr	ecn no.	dr	date	linear	.XXX±.005/.XX±.13	title	
J	DG07-0012	JULIA	01/12/07		.XXX±.0020/.XX±.051	RIGHT ANGLE RECEPTACLE w/o GUIDE PIN	
K	DG07-0118	RYAN	03/29/07	angles	0°±2°	SIGNAL / POWER	
L	DG08-0239	JC	09/11/08	dr		product family	
F	V02389	JRW	10-05-00	enr		PWRLADE	
G	V21512	TAB	10-04-02	chr		code	
H	V03-0769	TAB	07-17-03	appd		213	
sheet index		revision sheet	L	L	L	size	
			1	2	3	dwg no	

THIS FILE WAS ORIGINALLY CREATED IN THE PRO ENGINEER ENVIRONMENT AND ANY FUTURE REVISIONS TO THIS FILE MUST BE MADE IN THE PRO ENGINEER ENVIRONMENT

form no. 7530-001-103

1 | 2

3 |

cage code	22526
-----------	-------

4

Tous droits strictement réservés. Reproduction ou communication à des tiers interdite, sous quelque forme que ce soit sans autorisation écrite du propriétaire. Propriété de c.FCI. Droits de reproduction FCI.



All rights strictly reserved. Reproduction or issue to third parties in any form whatever is not permitted without written authority from the proprietor. Property of FCI. Copyright FCI.

PRODUCT NUMBER
51765-A00CCCDDE0_
SEE NOTE 1

DIM	LENGTH FORMULAS (SEE NOTE 10)
DIM "A"	.250 [6.35] x DD + .100 [2.54] x (CCC/4) + .090 [2.29] (NOTE 10)
DIM "D"	.250 [6.35] x DD + .095 [2.41]
DIM "F"	.250 [6.35] x DD + .100 [2.54] x (CCC/4) + .120 [3.05]
DIM "G"	.250 [6.35] x DD - .025 [0.64]

CONNECTOR NOTES

- ① PRODUCT NUMBER CODE:
51765 - A 00 CCC DD E 0 LF
- W/O THIS SUFFIX: 100u"/2.54um SnPb ON PCB INTERFACE
 - WITH THIS SUFFIX: 78u"/1.98um Sn ON PCB INTERFACE
 - ALWAYS '0' (ZERO) (NOTE 8)
 - TAIL OPTIONS (NOTE 7)
 - NUMBER OF LEFT END POWER CONTACTS (NOTE 6)
 - NUMBER OF SIGNAL CONTACTS (NOTE 5)
 - ALWAYS '00' (ZERO,ZERO) (NOTE 4)
 - PLATING (NOTE 3)
 - BASE NUMBER
- ② HOUSING MATERIAL: GLASS FILLED V-O HIGH TEMP THERMO PLASTIC.
SIGNAL CONTACT MATERIAL: COPPER ALLOY
POWER CONTACT MATERIAL: COPPER ALLOY
- ③ PLATING OPTION:
 = SEE PRINT 10064183 FOR PLATING SPEC OF 51765-100CCCDDE0; 51765-100CCCDDE0LF
- ④ THIS PART IS NOT AVAILABLE WITH RIGHT SIDE POWER CONTACTS.
- ⑤ SIGNAL CONTACTS, 004 TO 148 AVAILABLE FOR SOLDER TO BOARD,
020 TO 148 AVAILABLE FOR PRESS-FIT.
- ⑥ LEFT END POWER CONTACTS, 01 TO 20 AVAILABLE.
MAXIMUM OF 20 POWER CONTACTS PER CONNECTOR
- ⑦ TAIL OPTIONS:
A = .135 ± .010 [3.43 ± 0.25] SOLDER TO BOARD
B = .090 + .005 / - .010 [2.29 + 0.13 / - 0.25]
SOLDER TO BOARD)
C = .154 ± .010 [3.91 ± 0.25] PRESS-FIT TO BOARD

- ⑧ BOARD RETENTION NOT AVAILABLE WITH GUIDELESS ENDS.
- ⑨ MANUFACTURE'S NAME, P/N, AND DATE CODE TO APPEAR ON THIS SURFACE.
- ⑩ THE MAXIMUM OVERALL LENGTH (DIM A) OF A PART IS 8.00 [203.2]
11. PRODUCT SPECIFICATION GS-12-149
12. APPLICATION SPECIFICATION BUS-20-067
- PCB NOTES:
13. ALL DIMENSIONS ARE BASIC UNLESS OTHERWISE SPECIFIED.
14. ALL THROUGH HOLES ARE LOCATED WITH A TRUE POSITION OF .004[0.10]
15. ALL HOLE DIAMETERS ARE FINISHED HOLE SIZE.
- ⑬ Ø0.0453 ± .001 [1.151 ± 0.02] DRILLED HOLES PLATED WITH 0.0003 [0.007] MIN SnPb OR Sn OVER 0.001 [1.03] TO .003 [0.08] Cu PLATING TO ACHIEVE A .040±.003 [1.02±08] HOLE.
17. A SYMBOL WILL BE NEXT TO ANY DIMENSION, VIEW, OR NOTE WHICH HAS BEEN MODIFIED WITH THE CURRENT DRAWING REVISION.

THIS FILE WAS ORIGINALLY CREATED IN THE PRO ENGINEER ENVIRONMENT AND ANY FUTURE REVISIONS TO THIS FILE MUST BE MADE IN THE PRO ENGINEER ENVIRONMENT

mat'l code				tolerances unless otherwise specified		CUSTOMER COPY		FCI www.fciconnect.com	
ltr	ecr no.	dr	date	linear	.XX±.01 / .X±.3	projection		title	
L					.XXX±.005 / .XX±.13			RIGHT ANGLE RECEPTACLE w/o GUIDE PIN SIGNAL / POWER	
				angles	.XXX±.0020 / .XX±.051		product family	PWRBLADE	code
				dr	0° ± 2°	INCH / MM	size	dwg no	213
				enrg	D.BOGLE 05-18-99	scale	51765	SHEET	2
				chr	J. BROWN 05-18-99	1:1			
				appd	J. BROWN 05-18-99				
sheet index	revision sheet								

form no. 7530-001-103

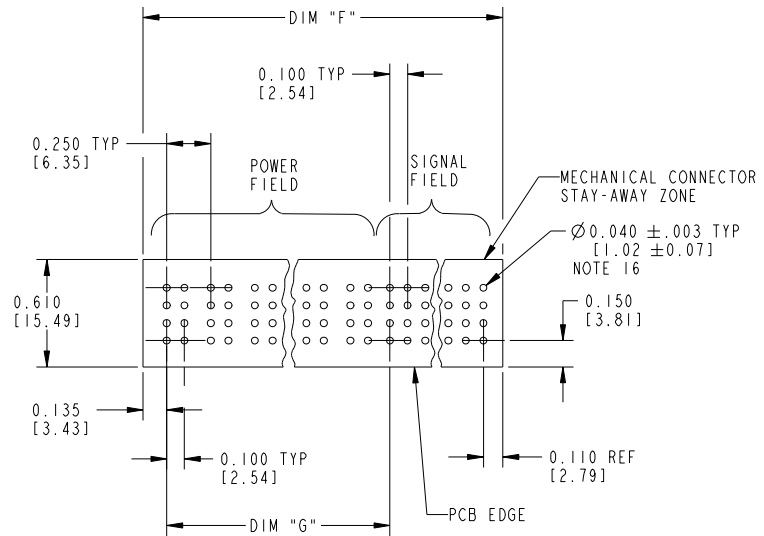
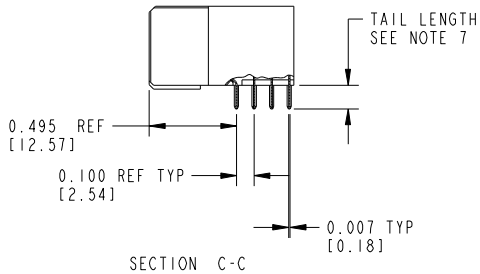
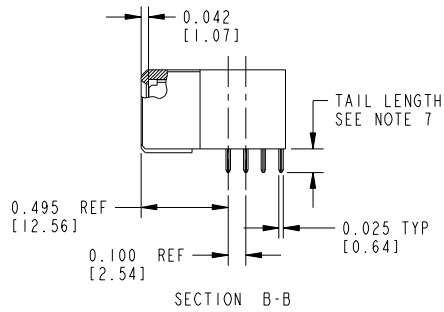
cage code 22526

Tous droits strictement réservés. Reproduction ou communication à des tiers interdite, sous quelque forme que ce soit sans autorisation écrite du propriétaire. Propriété de c FCI. Droits de reproduction FCI.



All rights strictly reserved. Reproduction or issue to third parties in any form whatever is not permitted without written authority from the proprietor. Property of FCI. Copyright FCI.

PRODUCT NUMBER
51765-A00CCDDE0_..
SEE NOTE 1



mat'l code		tolerances unless otherwise specified		CUSTOMER COPY		FCI www.fciconnect.com	
ltr	ecn no.	dr	date	linear	.XX±.01/.X±.3	projection	title
L					.XXX±.005/.XX±.13		RIGHT ANGLE RECEPTACLE w/GUIDE PIN SIGNAL / POWER
				angles	.XXX±.0020/.XX±.051		product family
				dr	0°±2°	INCH / MM	PWRBLADE
				enr	J. BROWN 05-18-99	scale	code
				chr	J. BROWN 05-18-99	1:1	213
				appd	J. BROWN 05-18-99	size	SHEET
sheet index	revision sheet					A	3
						dwg no	3
						51765	

form no. 7530-001-103

cage code 22526