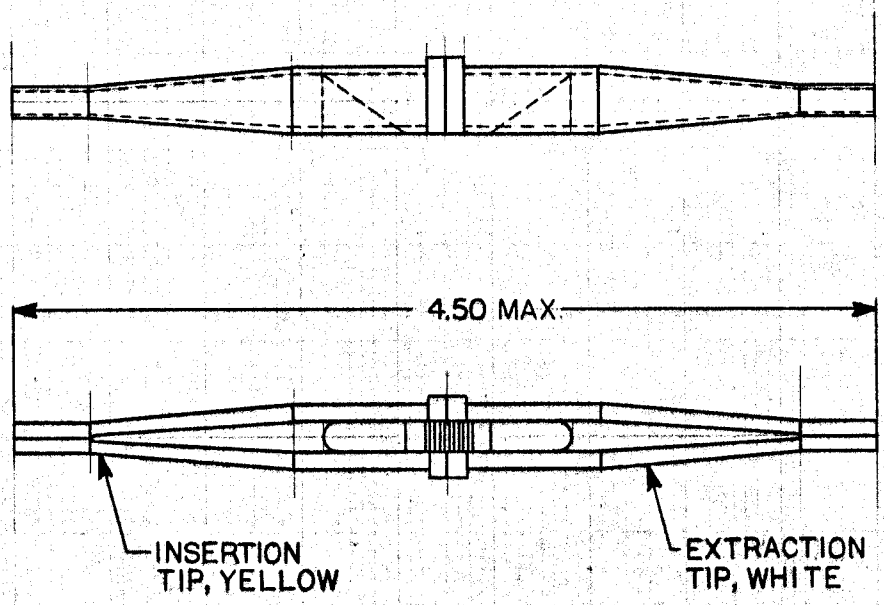


REVISIONS				
ZONE	LTR	DESCRIPTION	DATE	APPROVED
-	A	RELEASED TO MFG	4/24/77	12hr



**NOTES:**

1. THIS DOUBLE ENDED TOOL IS USED TO INSERT AND REMOVE ELECTRICAL CONTACTS FROM CONNECTOR BLOCKS. REFERENCE (MS3447-12)

**SPECIFICATION CONTROL DRAWING**

ITEM	QTY	PART NUMBER	DWG OR SPEC	PARTS LIST		DESCRIPTION		
THIS DRAWING AND THE INFORMATION SET FORTH HEREON ARE THE PROPERTY OF RAYCHEM CORPORATION, AND ARE TO BE HELD IN TRUST AND CONFIDENCE. PUBLICATION, DUPLICATION, DISCLOSURE, OR USE FOR ANY PURPOSE NOT EXPRESSLY AUTHORIZED IN WRITING BY RAYCHEM CORPORATION IS PROHIBITED.				UNLESS OTHERWISE SPECIFIED DIMENSIONS ARE IN INCHES AND TOLERANCES ARE:	DRAWN	J BITTER	12-6-76	RAYCHEM
				XXX : ±	CHECKED	R. Mottled	4/24/77	
				XX : ±	APPROVED	WTZ	2-15-77	CONTACT INSERTION & EXTRACTION TOOL (FOR #12 SOLDER TACT)
				XX : ±	APPROVED			
				MATERIAL	APPROVED			
					APPROVED			
				FINISH	PART NUMBER	993965	SIZE	CODE IDENT.
					PROJECT	AD-1527	C	NO 06000
							SCALE	NONE
							WEIGHT	
							SHEET	OF

If this document is printed it becomes uncontrolled. Check with the web for latest revision.

DO NOT SCALE THIS DRAWING

AD-1527  
NEXT ASSY USED ON  
APPLICATION

RAYCHEM CORPORATION  
300 CONSTITUTION DRIVE  
MENLO PARK, CALIFORNIA 94025

AD-1527-5